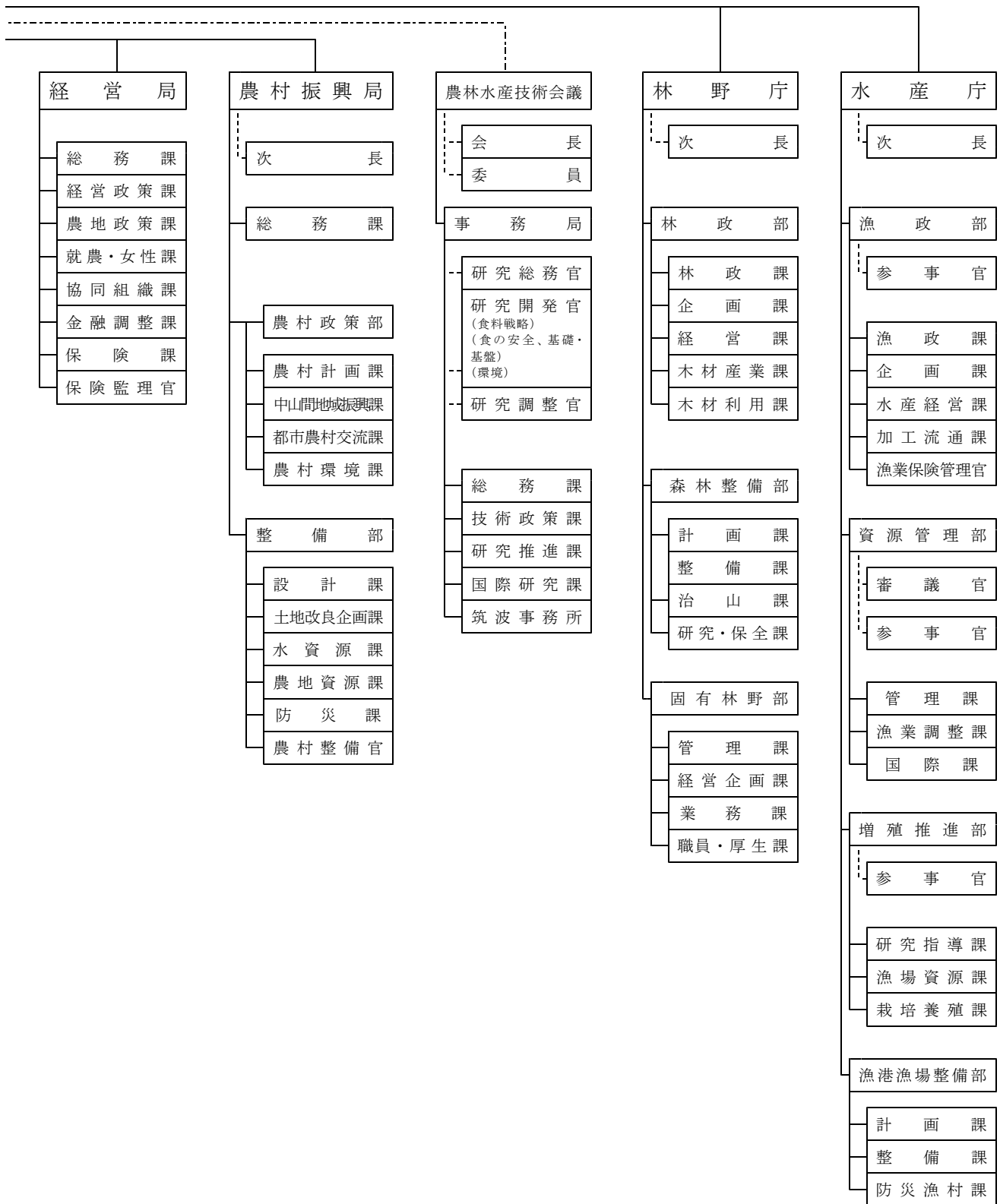
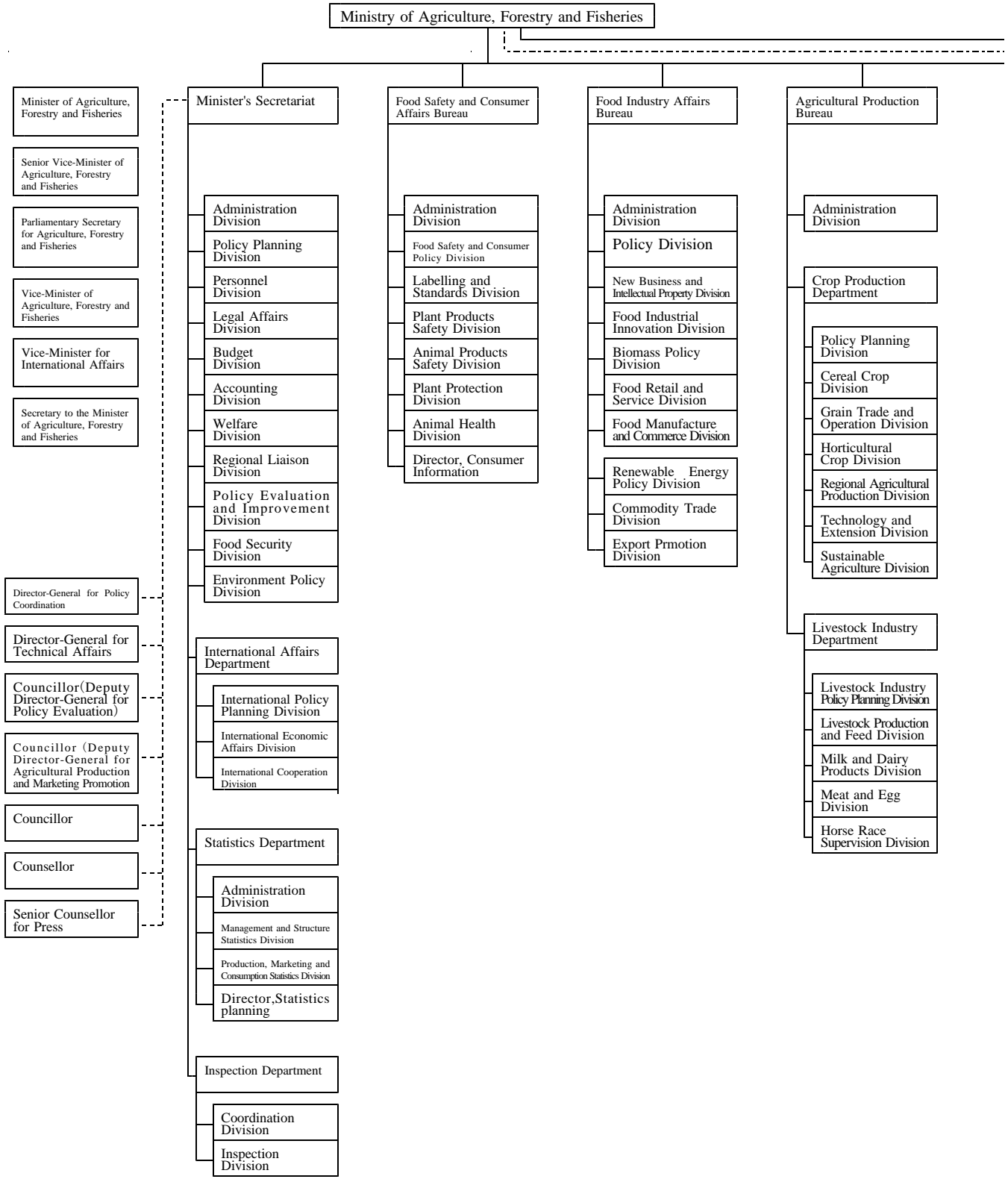


組織図

(平成24年4月1日現在)

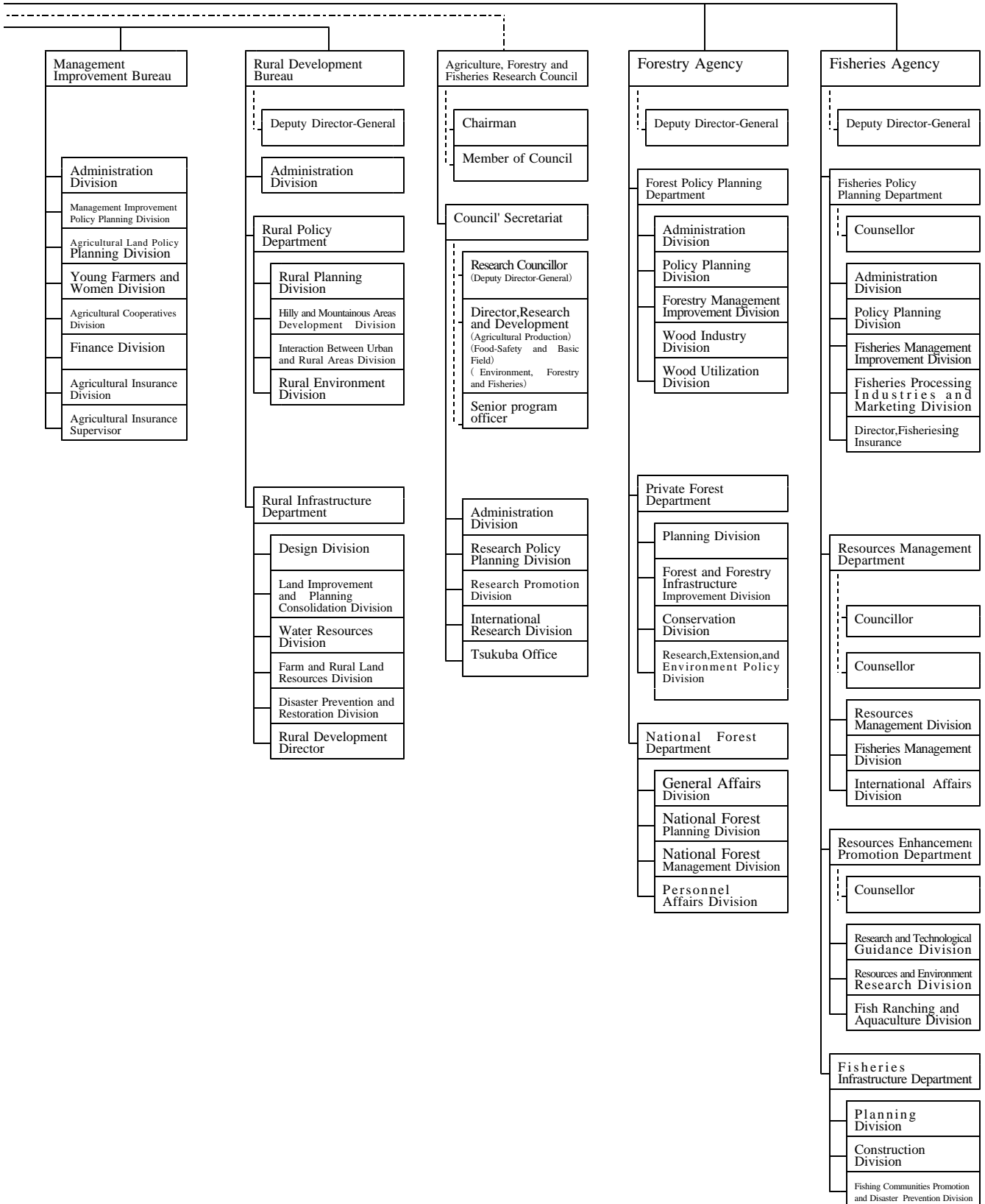


8 Structure of the Ministry of Agriculture,

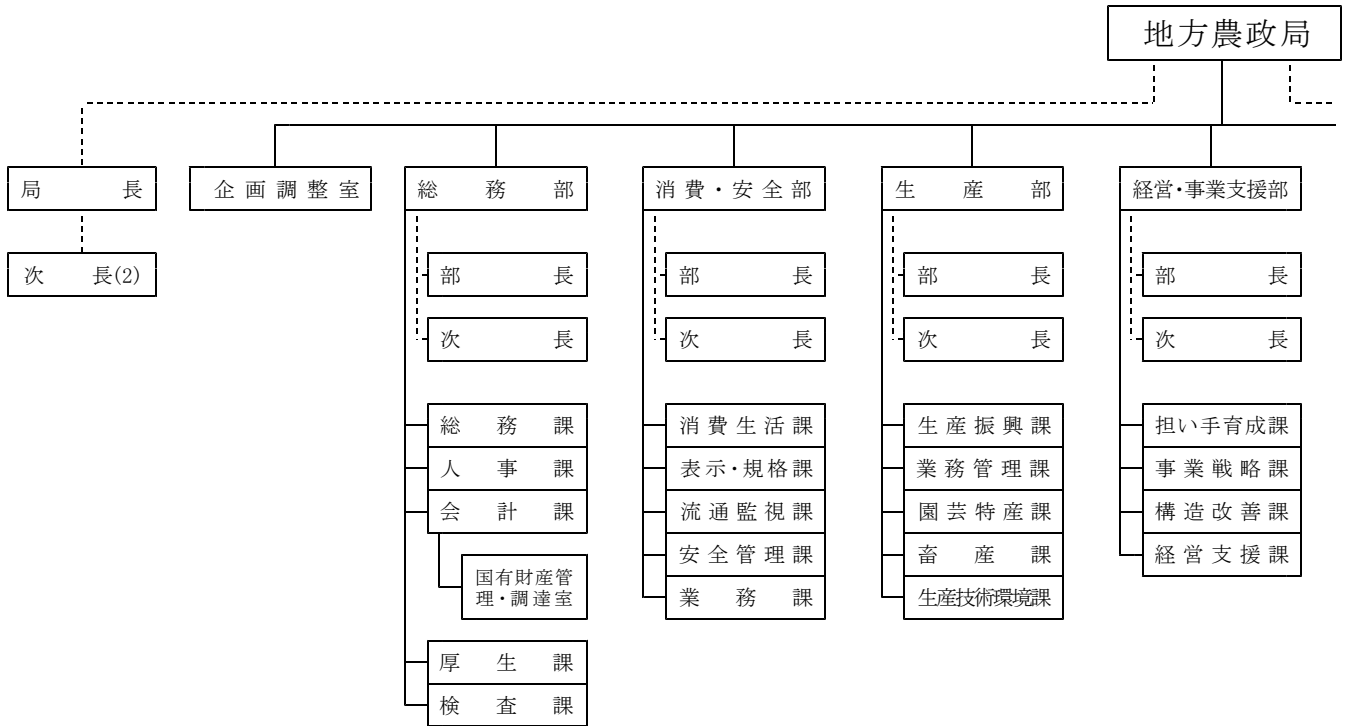


Forestry and Fisheries Organization

2012. 4. 1

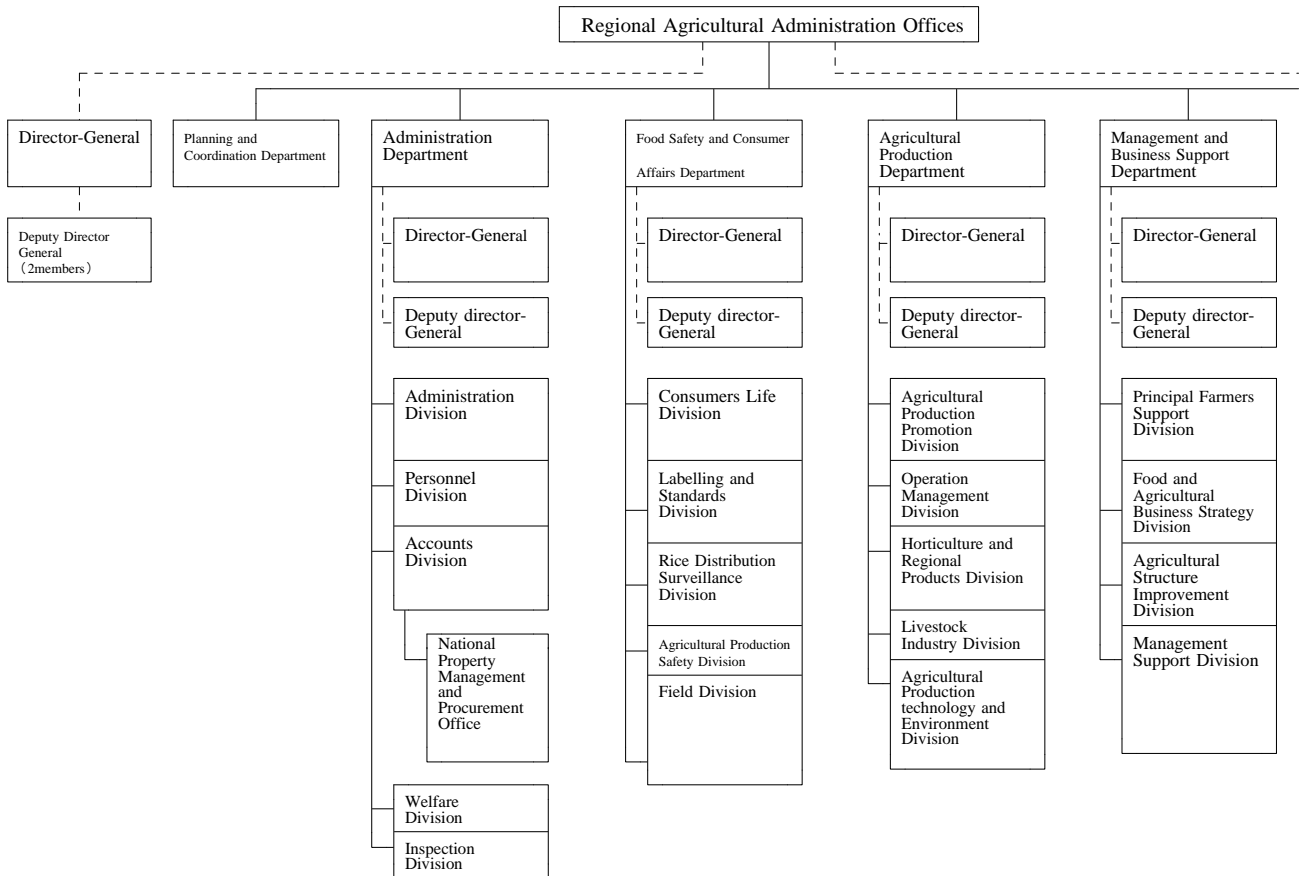


8 農 林 水 産 省



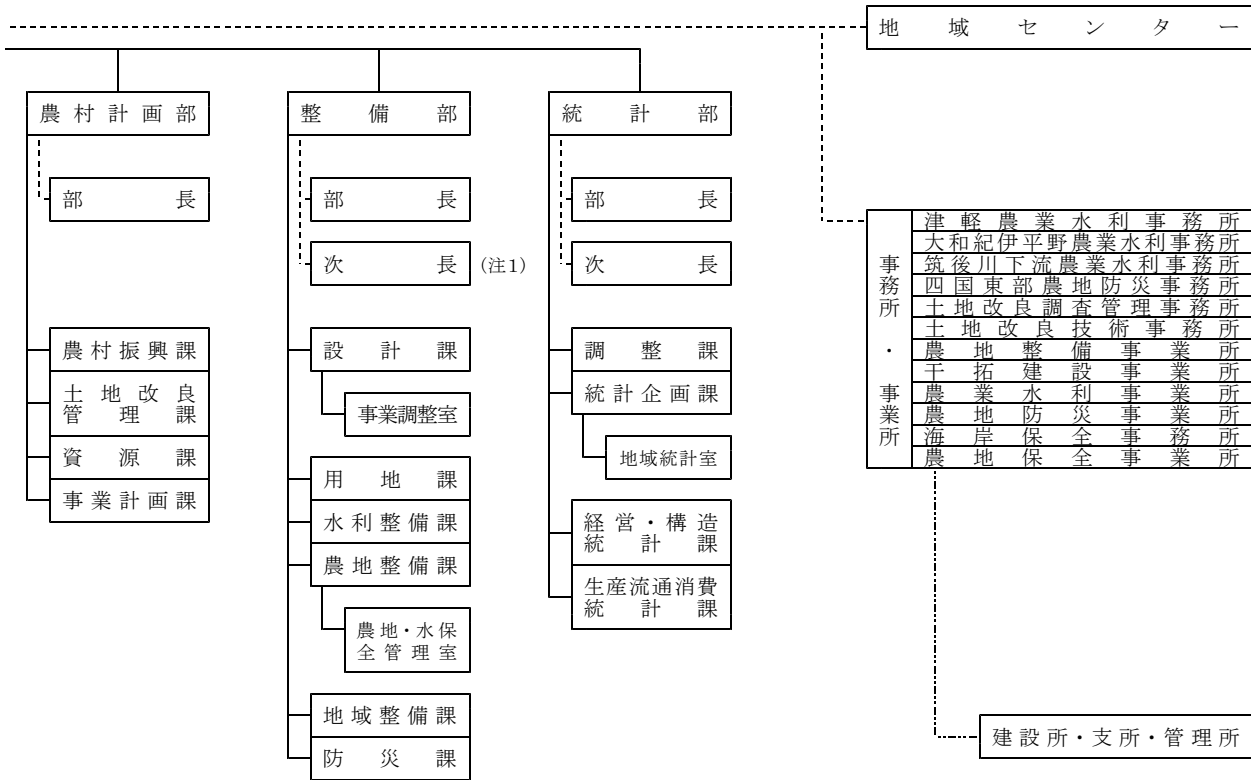
(注1) : 整備部次長は九州にあつては2人

8 Structure of the Ministry of Agriculture,

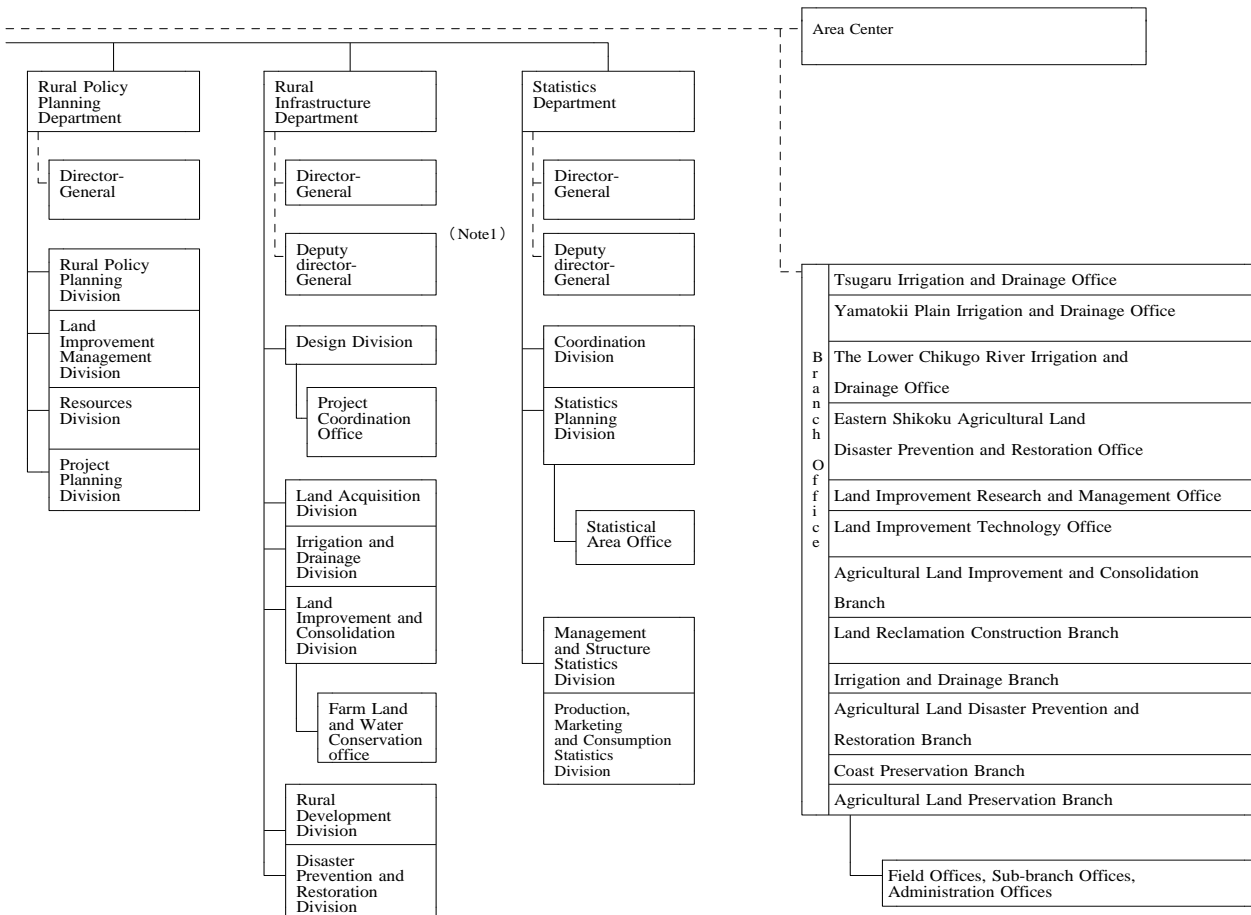


(Note1) :Kyushu office has two deputy directors.

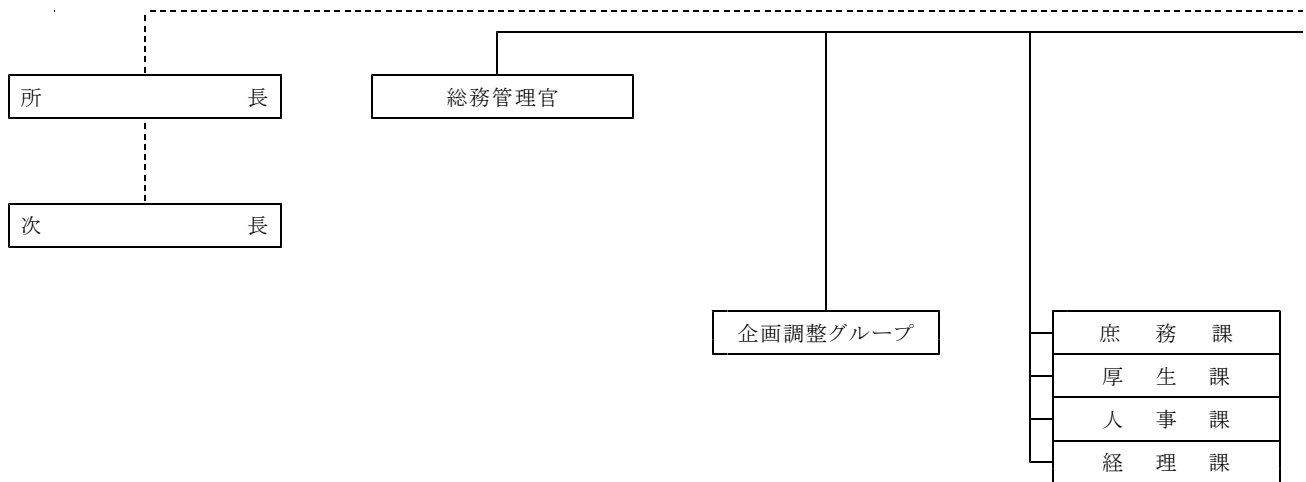
組 織 図 (続 き)



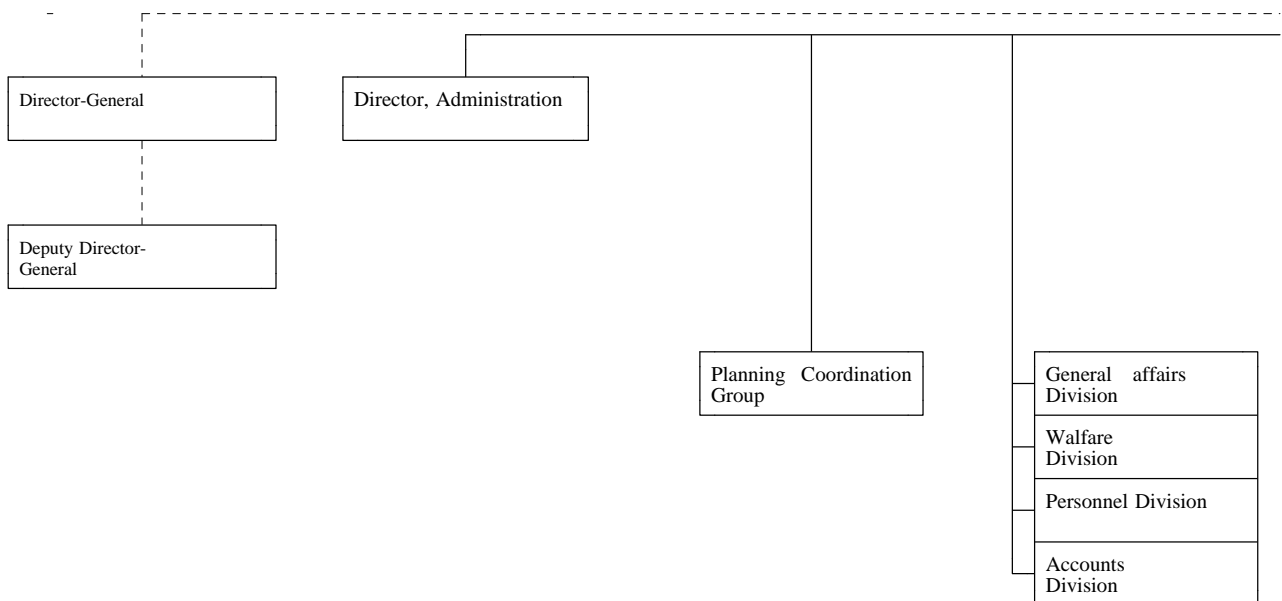
Forestry and Fisheries Organization(Cont.)



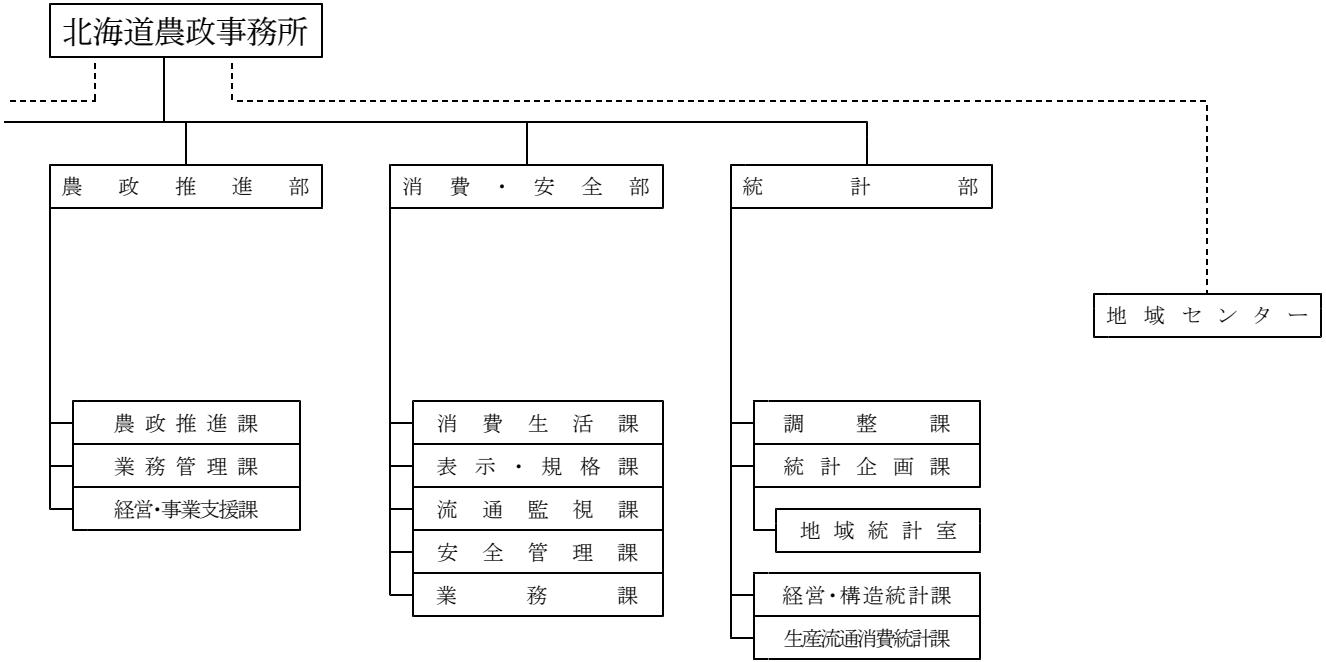
8 農 林 水 産 省



8 Structure of the Ministry of Agriculture,



組 織 図 (続 き)



Forestry and Fisheries Organization(Cont.)

