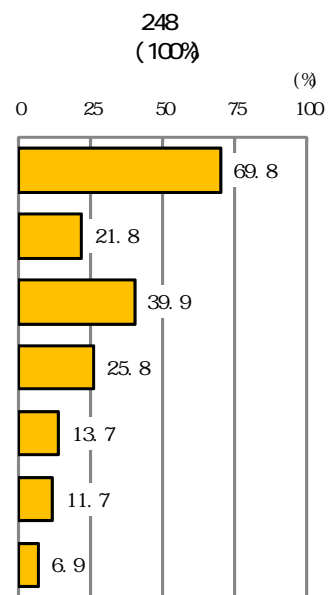
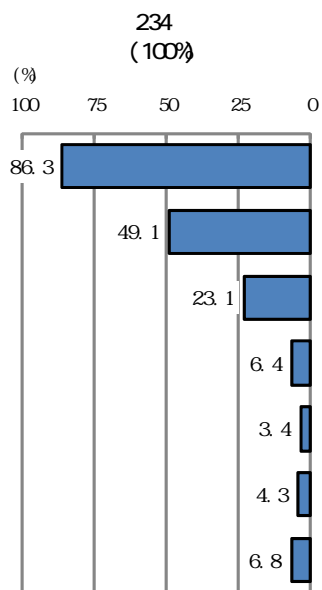
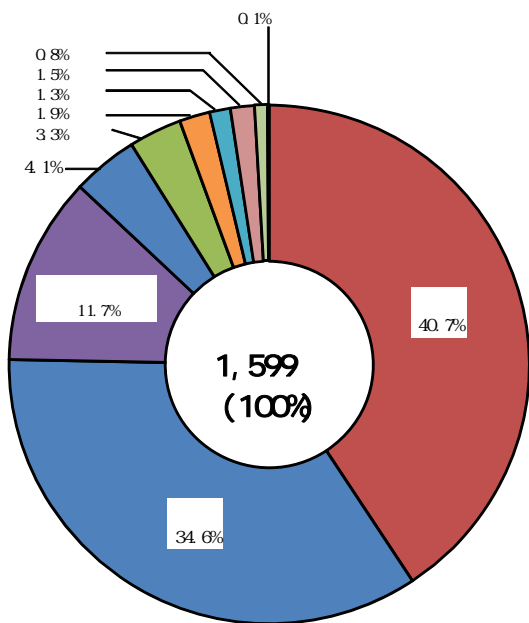
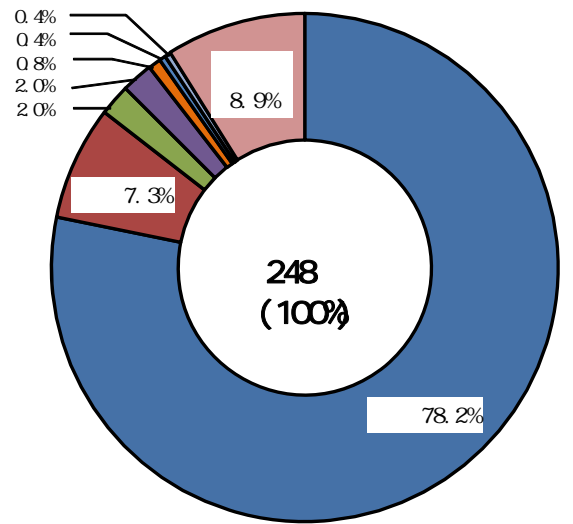
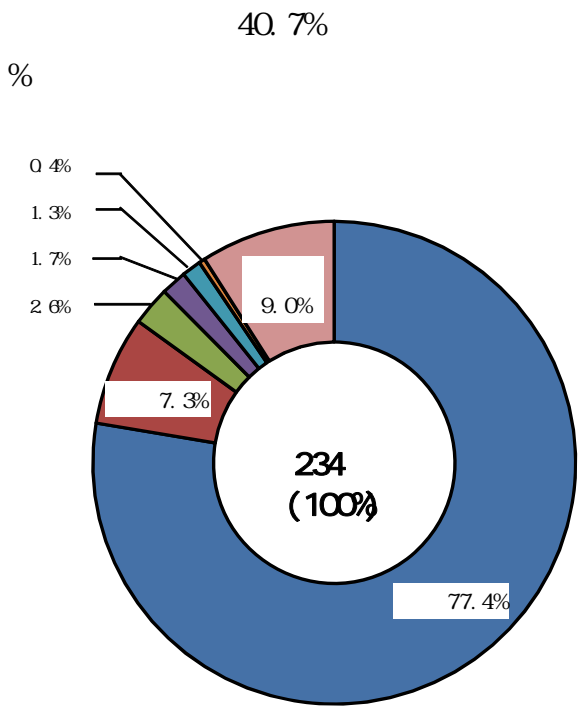


22

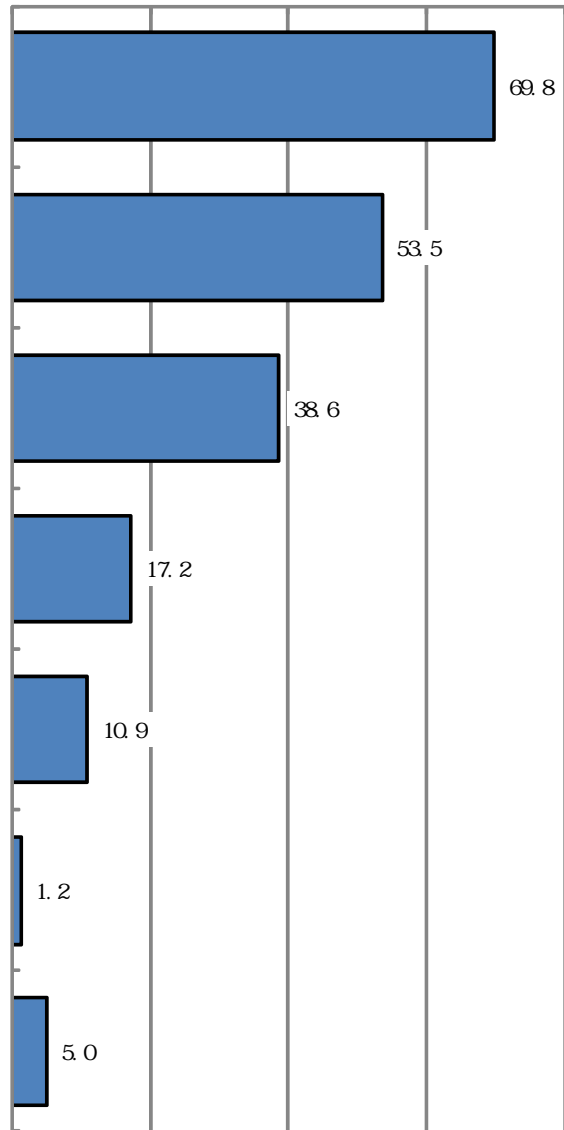
	22				
		1,779	300		
	338		1,599	234	248

: 69.8%  
49.1%  
39.9%  
23.1%  
25.8%  
: 86.3%





69.8%  
53.5%  
38.6%  
(  
0 20 40 60 80 (%)



1,584

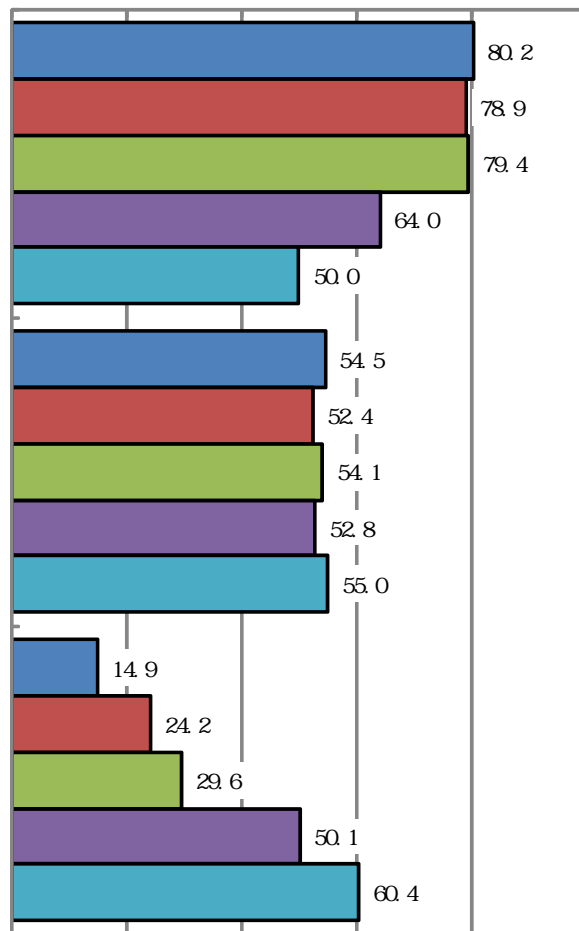
20 40

50

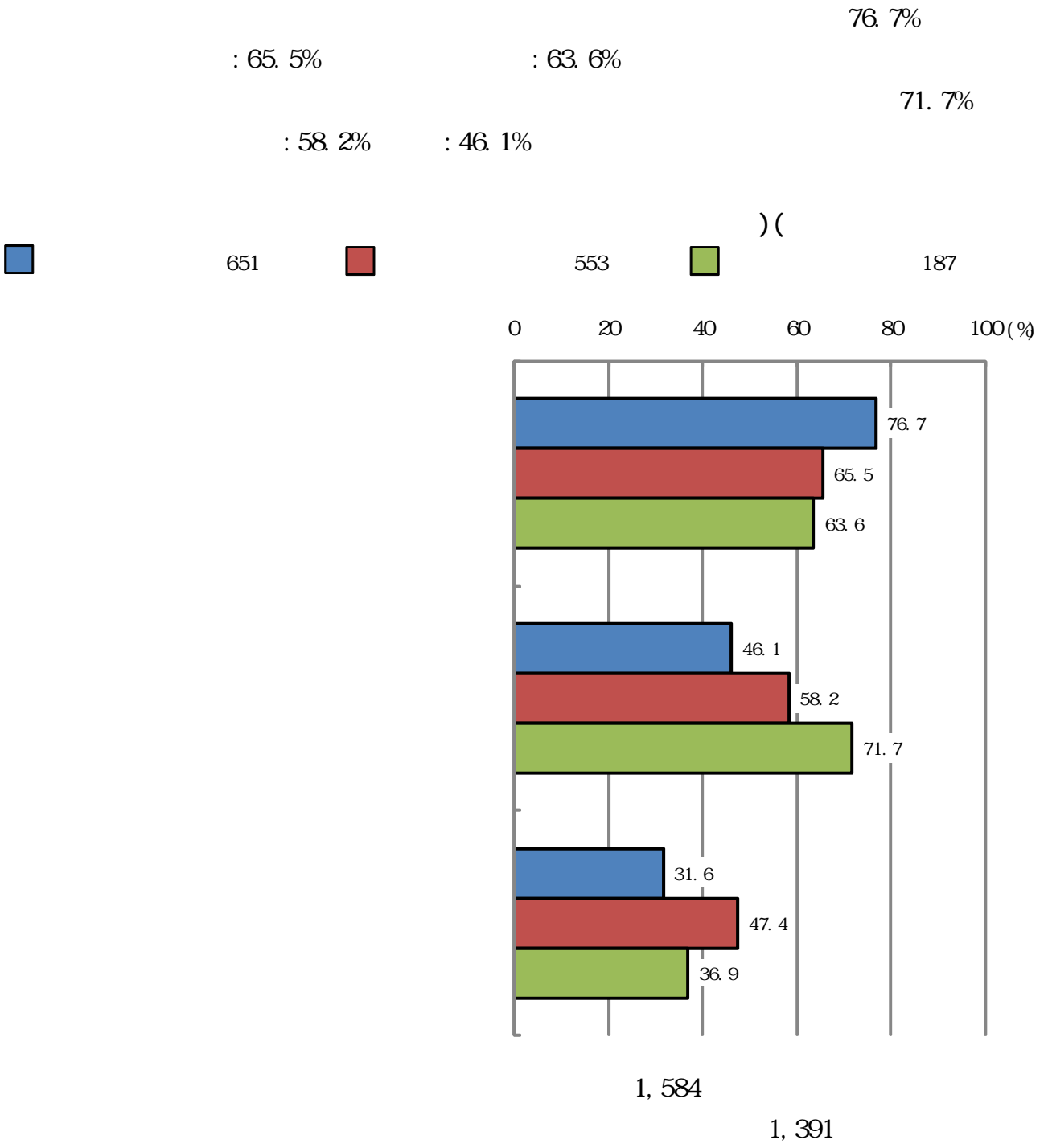
) (

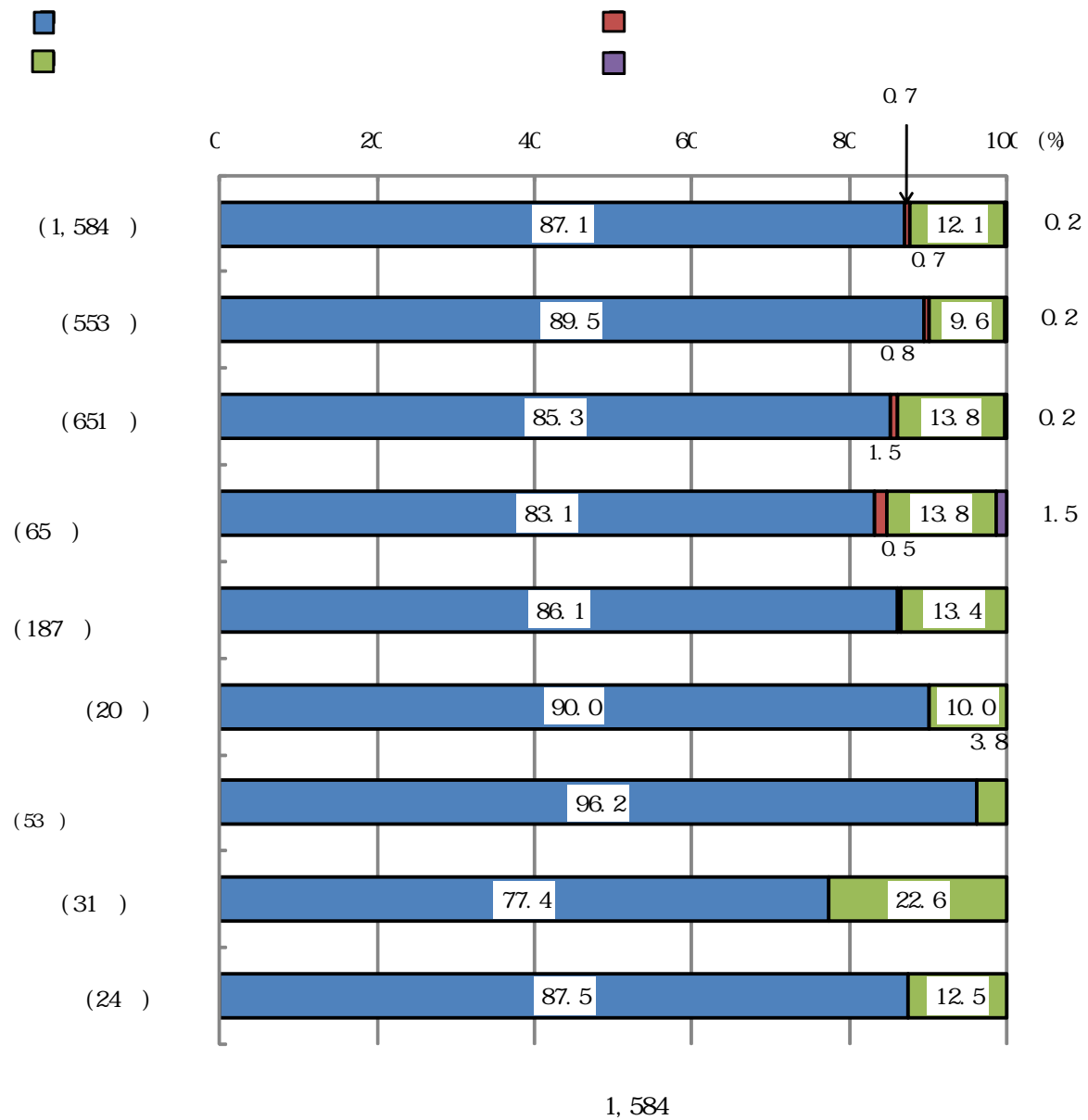
■ 20 29	121	■ 30 39	351	■ 40 49	379
■ 50 64	453	■ 65	280		

0 20 40 60 80 100 (%)

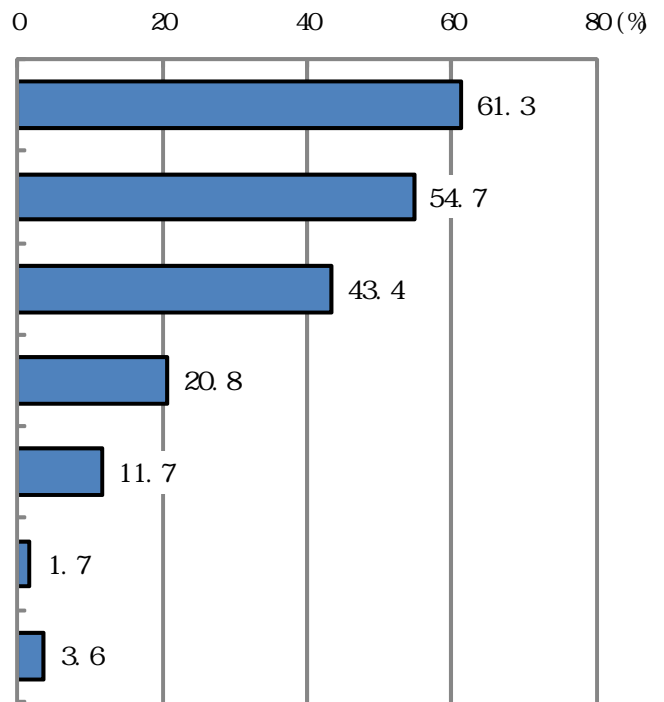


1, 584



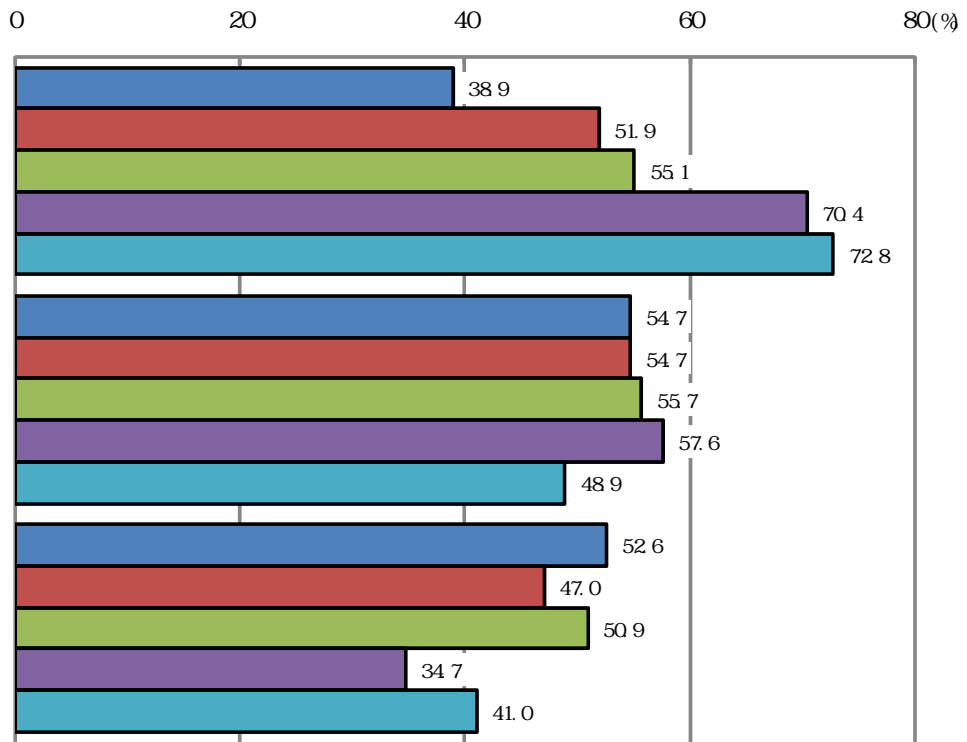
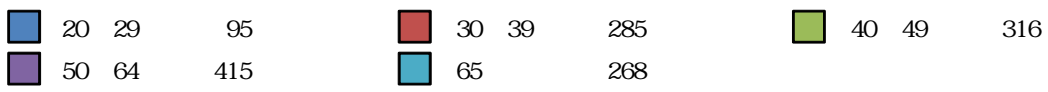


61.3%  
54.7%  
43.4%



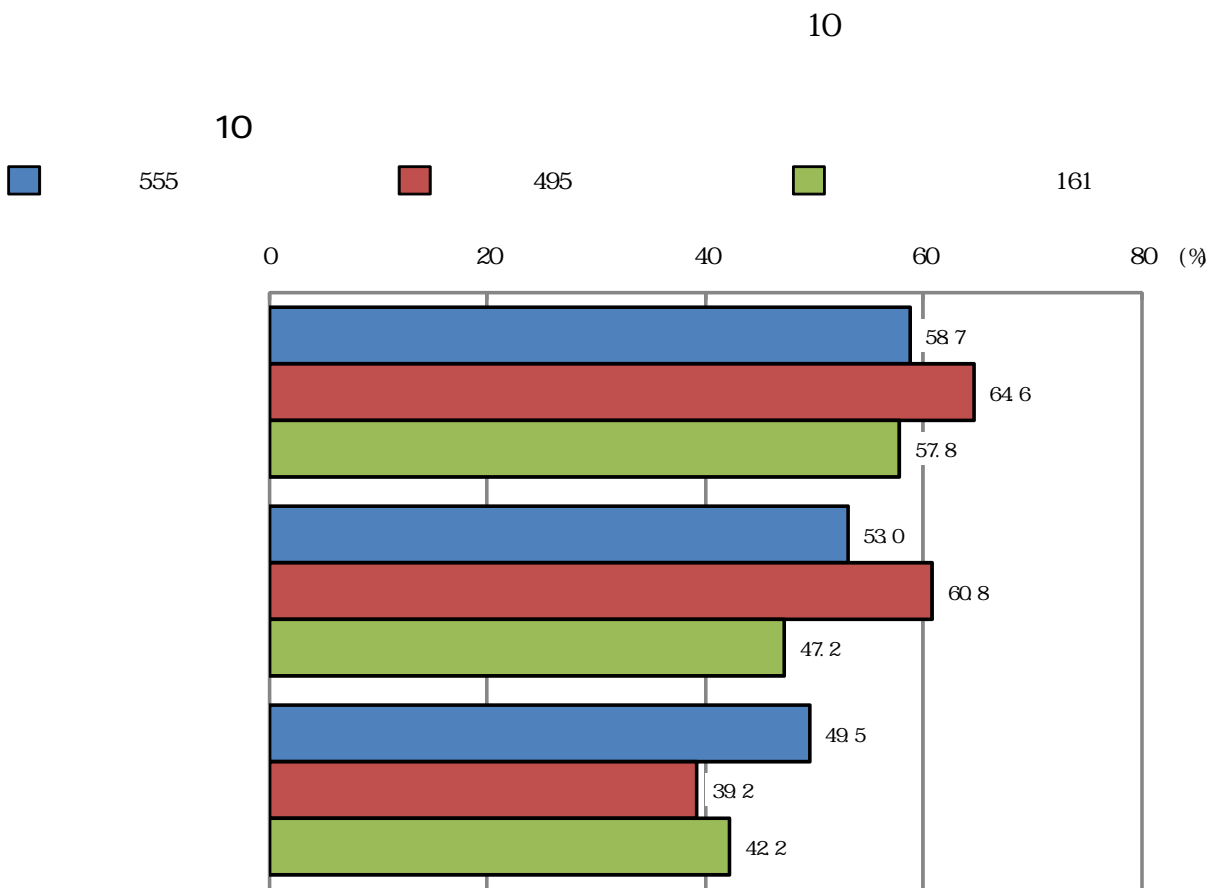
1,379

20 40



1, 379

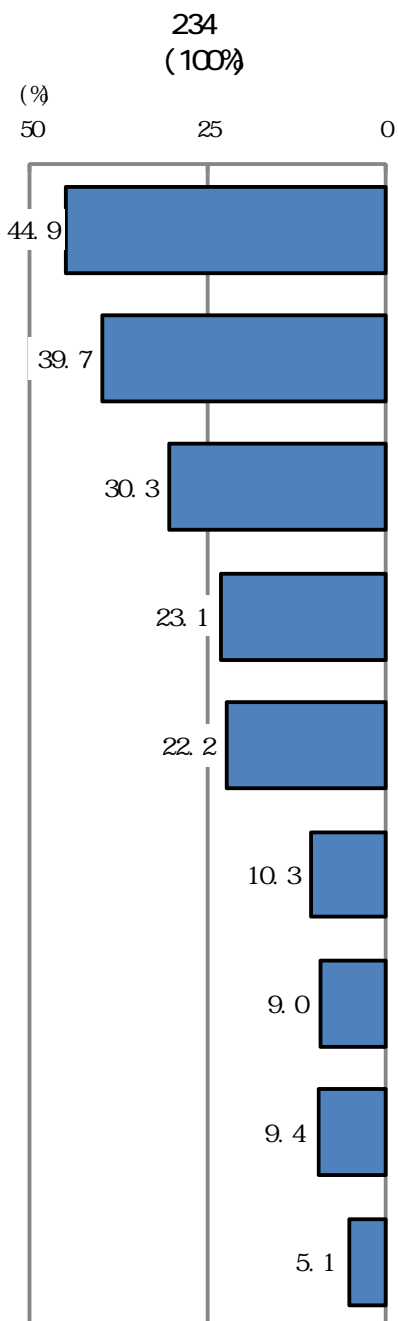




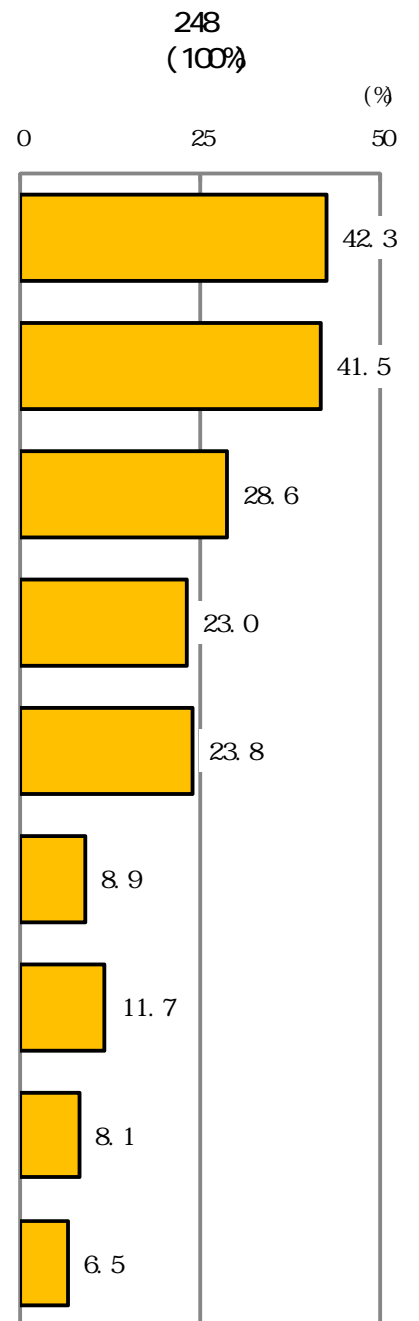
1, 379

1, 211

11



11



72.6%  
42.7%

45.2%

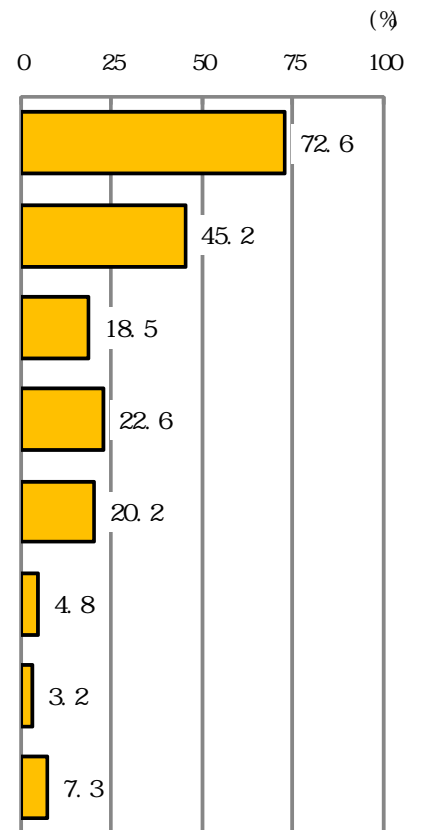
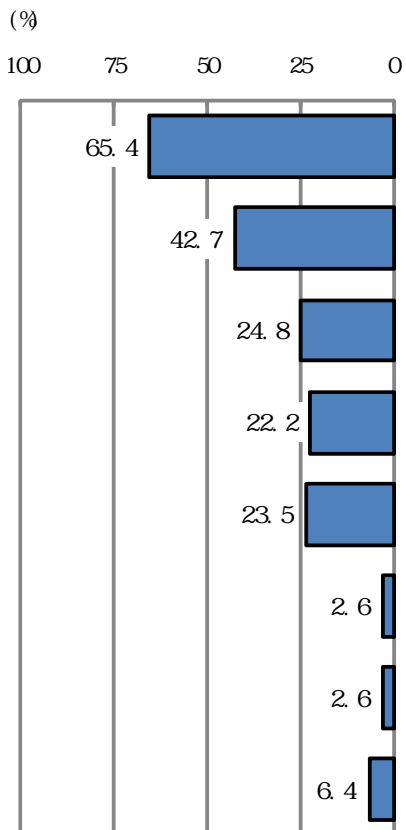
65.4%

12

12

234  
(100%)

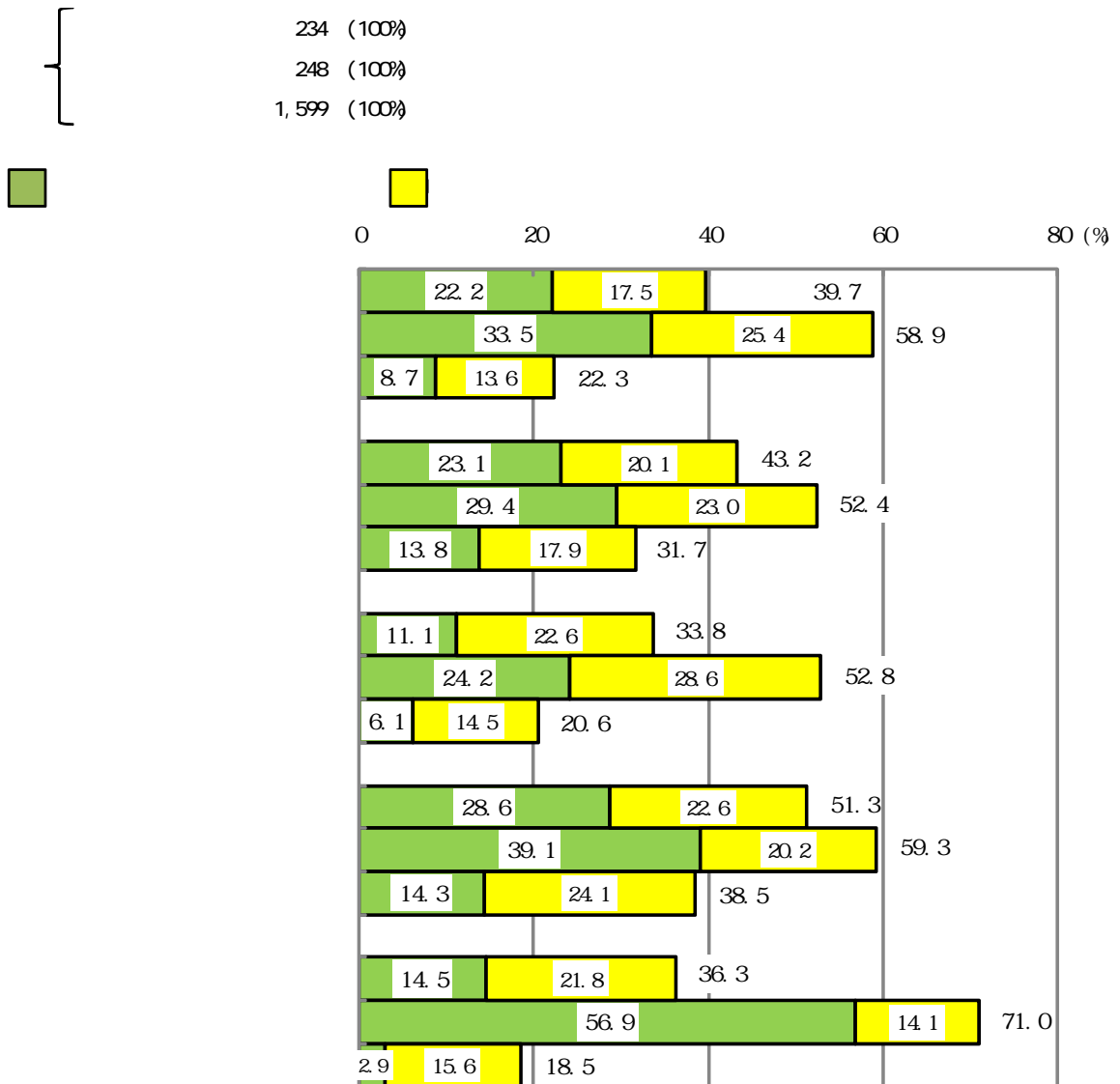
248  
(100%)



( 13

13

234 (100%)  
 248 (100%)  
 1,599 (100%)



37.2

17.9

2 3

55.1

(49.8%)

(49.7%)

41.9%

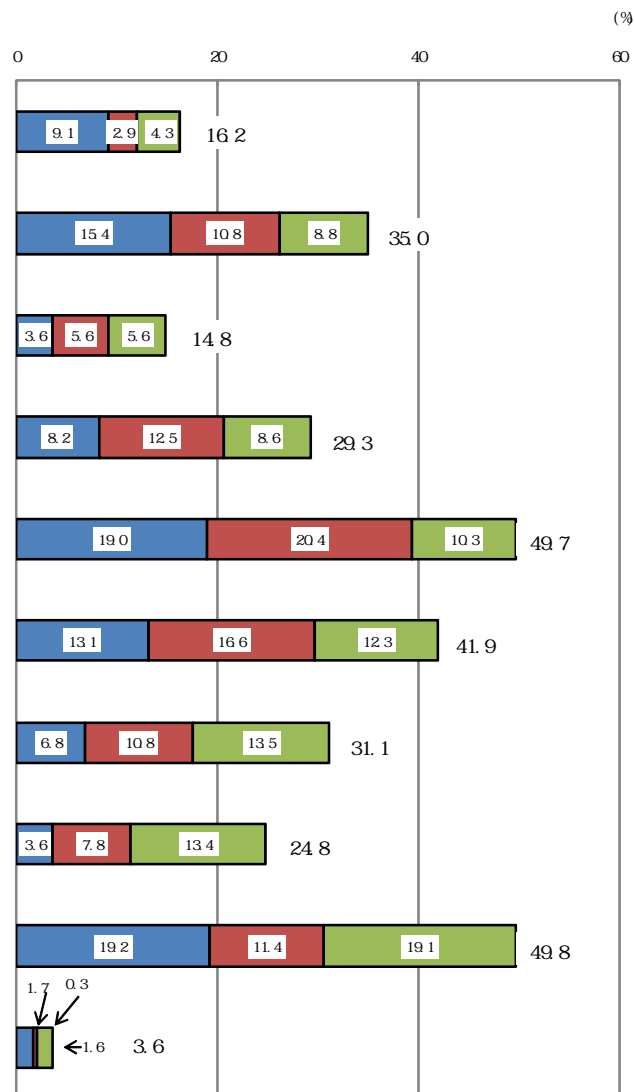
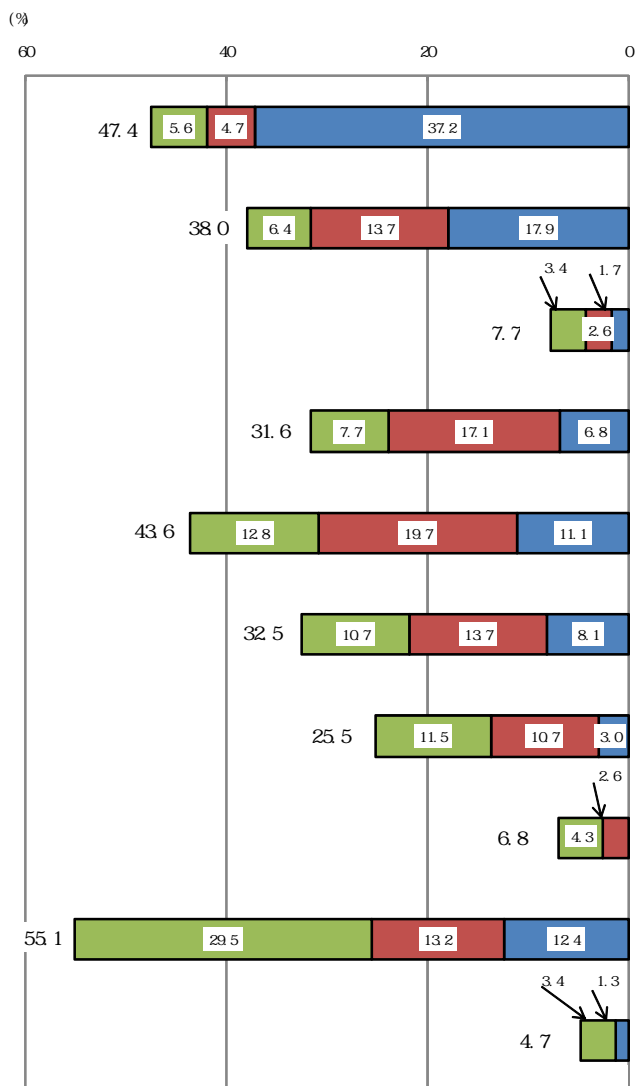
( 14)

14

( )

234 (100%)

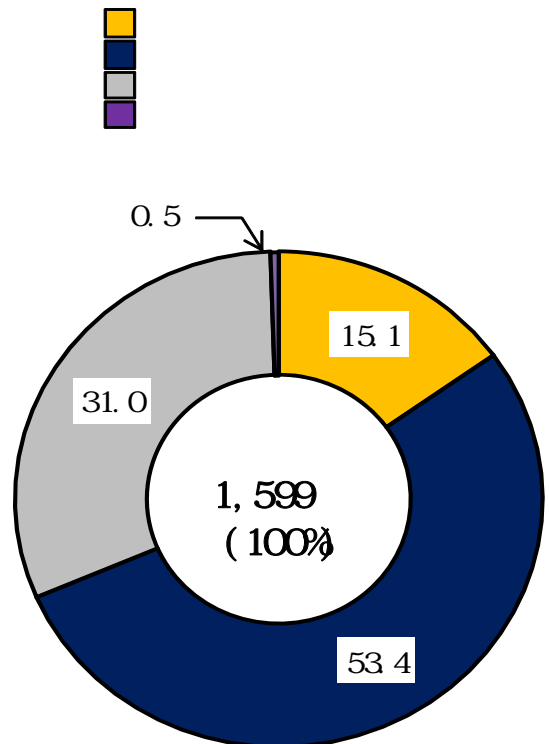
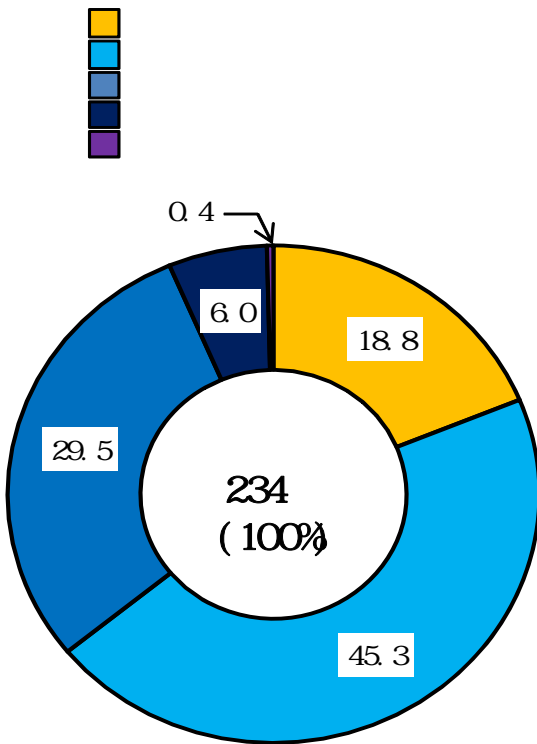
1,599 (100%)



(1)

( 15)

15



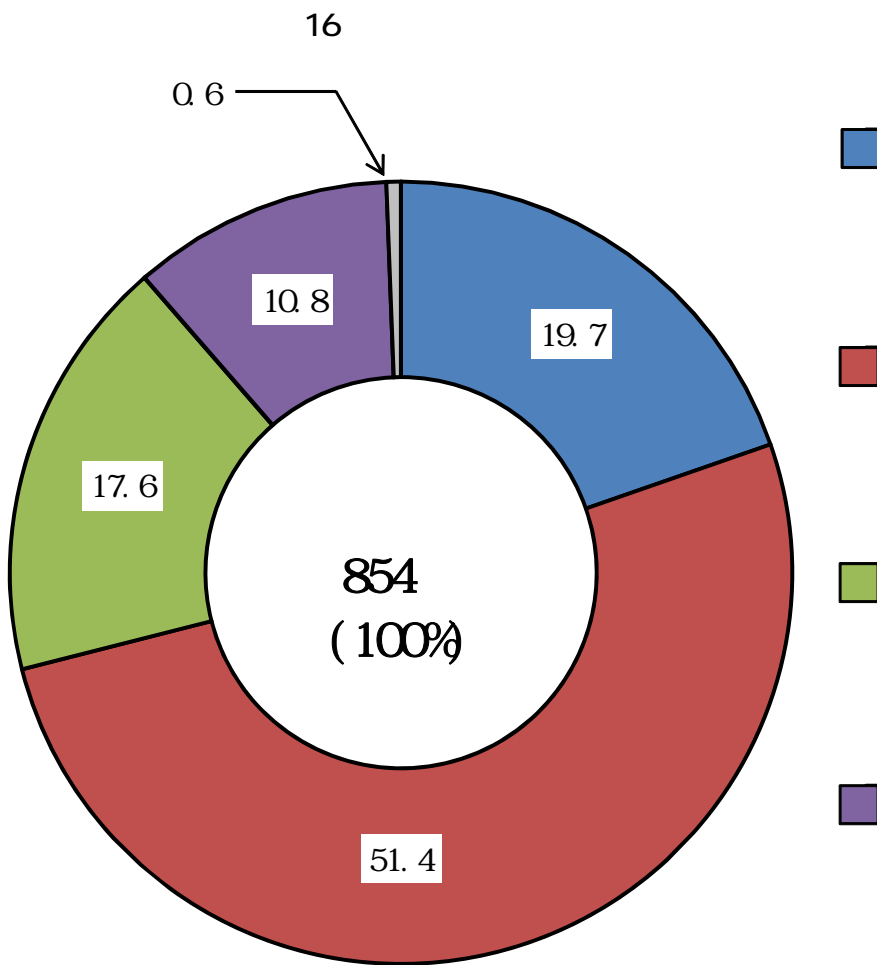
(2)

51.4%

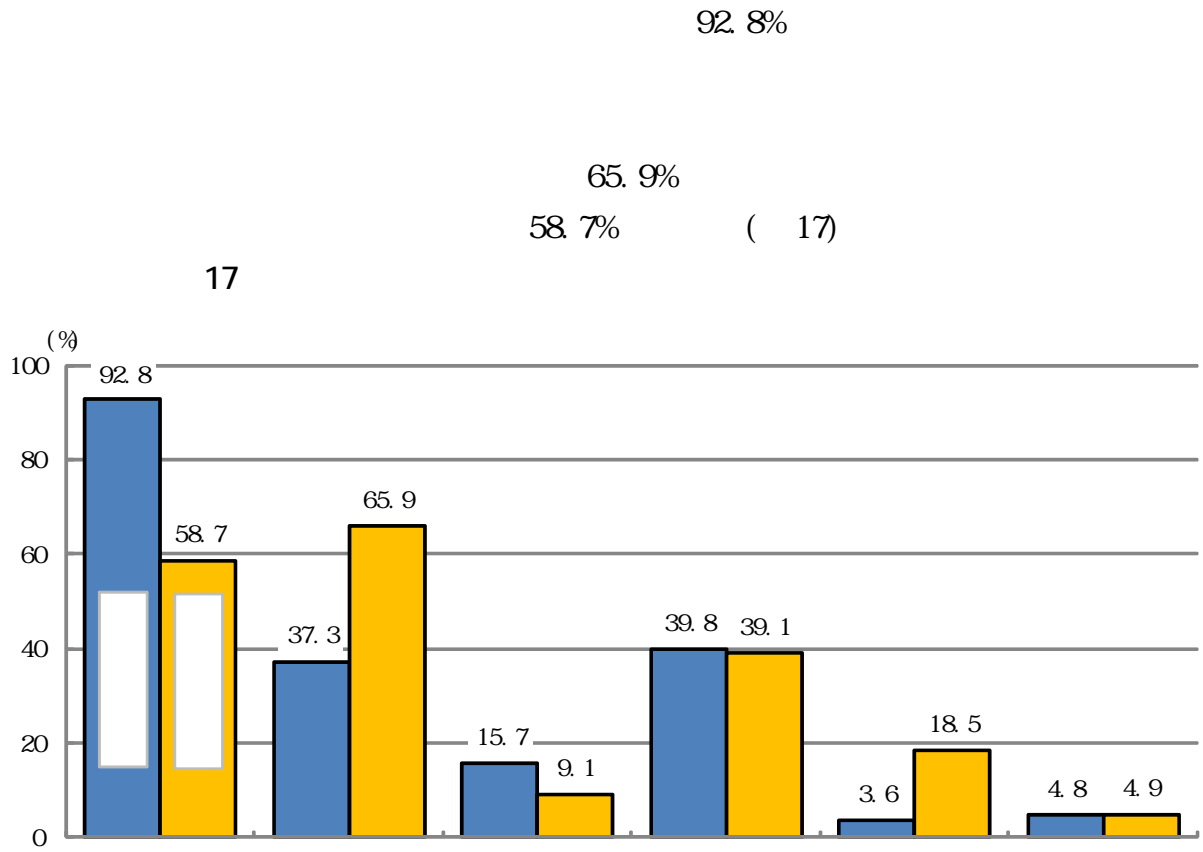
1

9.7%

17.6% ( 16 )



(3)





(4)

( )

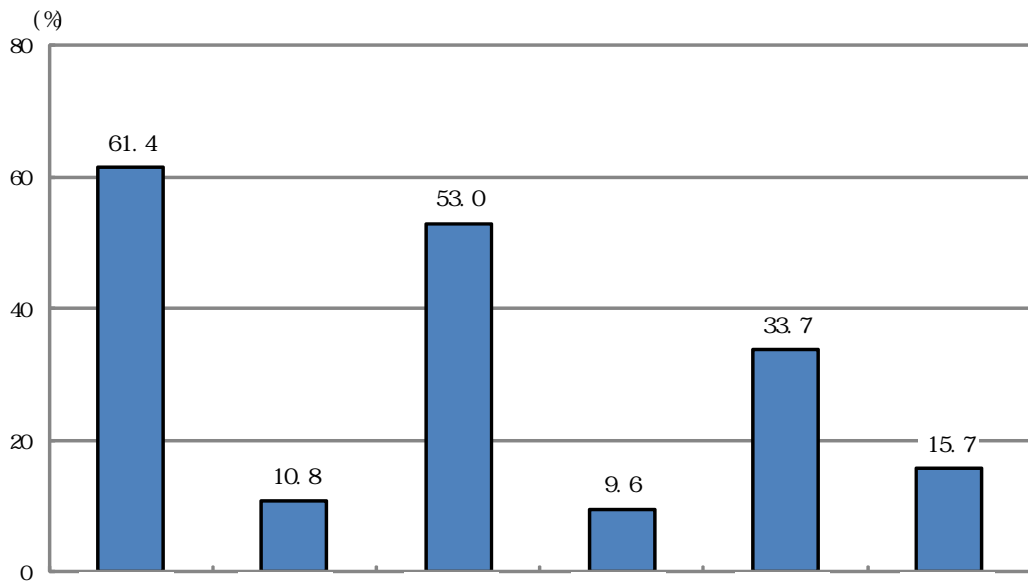
61.4%

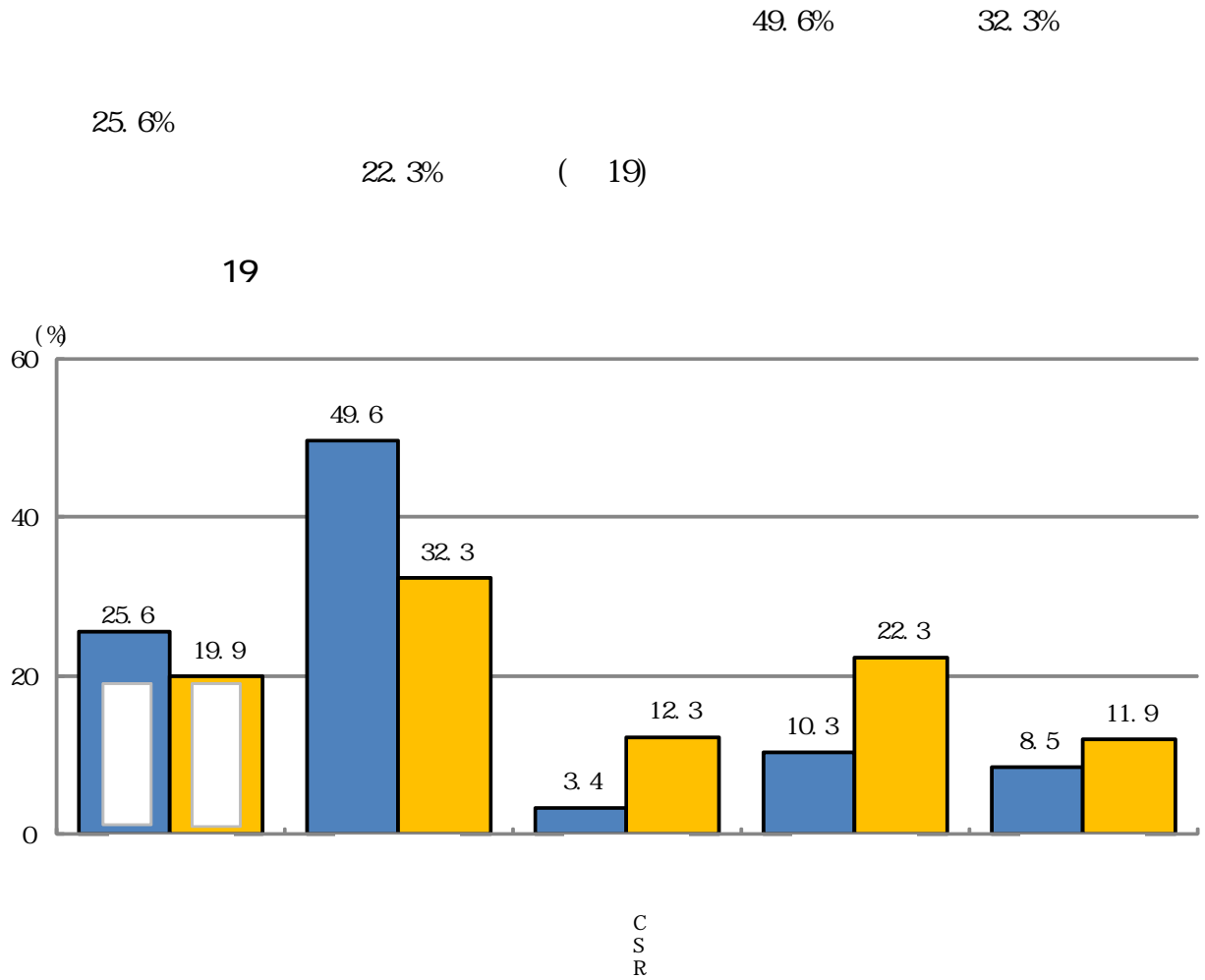
53.0%

( 18 )

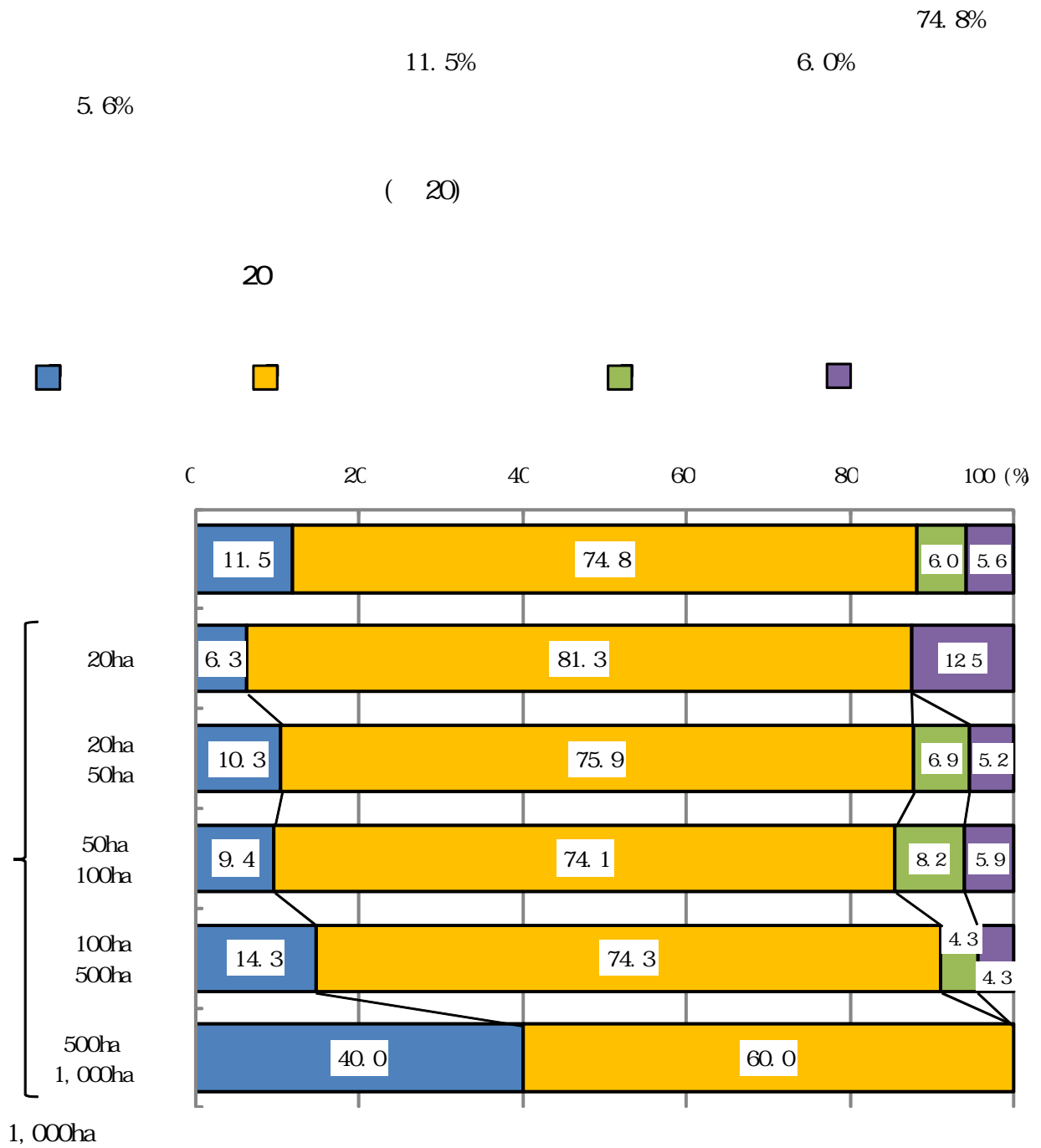
18

( )





(1)



(2)

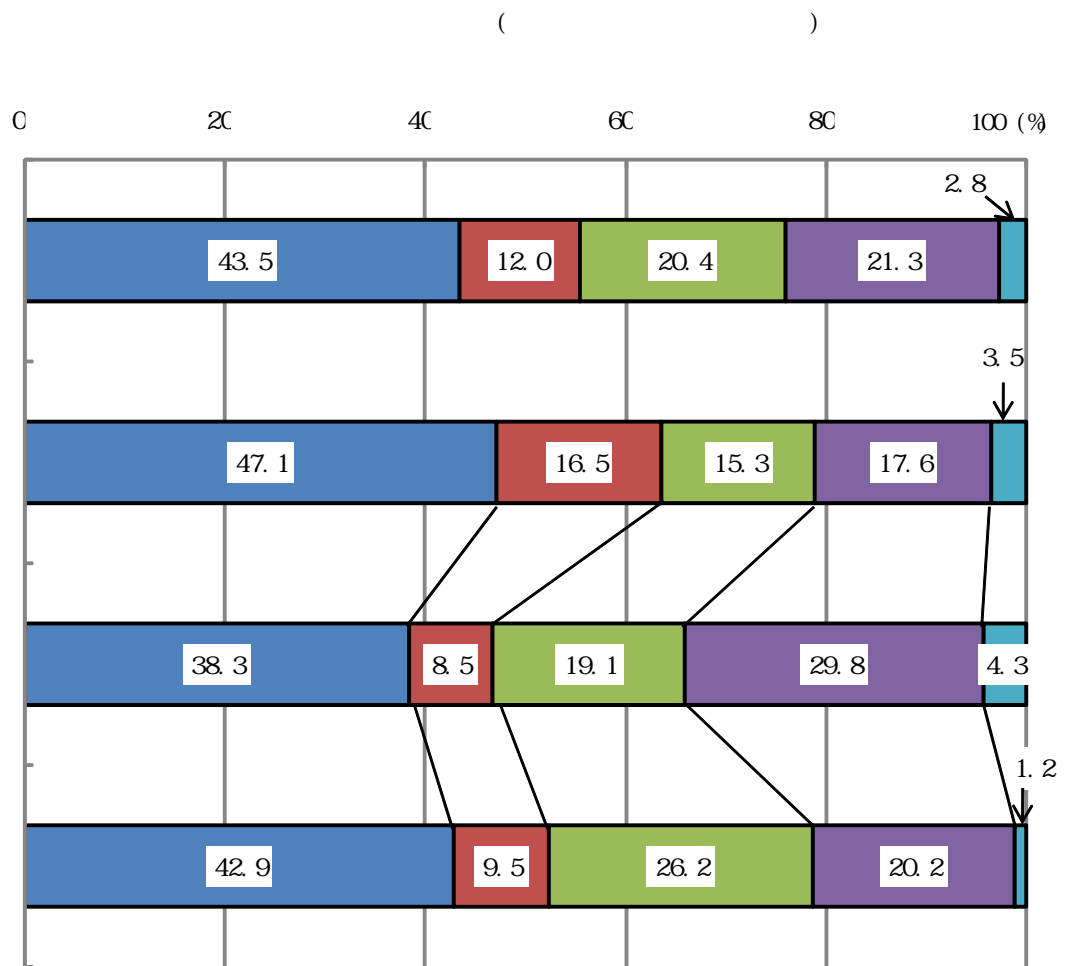
43.5%

21.3%

20.4%

( 21)

21





(4)

59.3%  
23.1%  
12.0%

80  
50

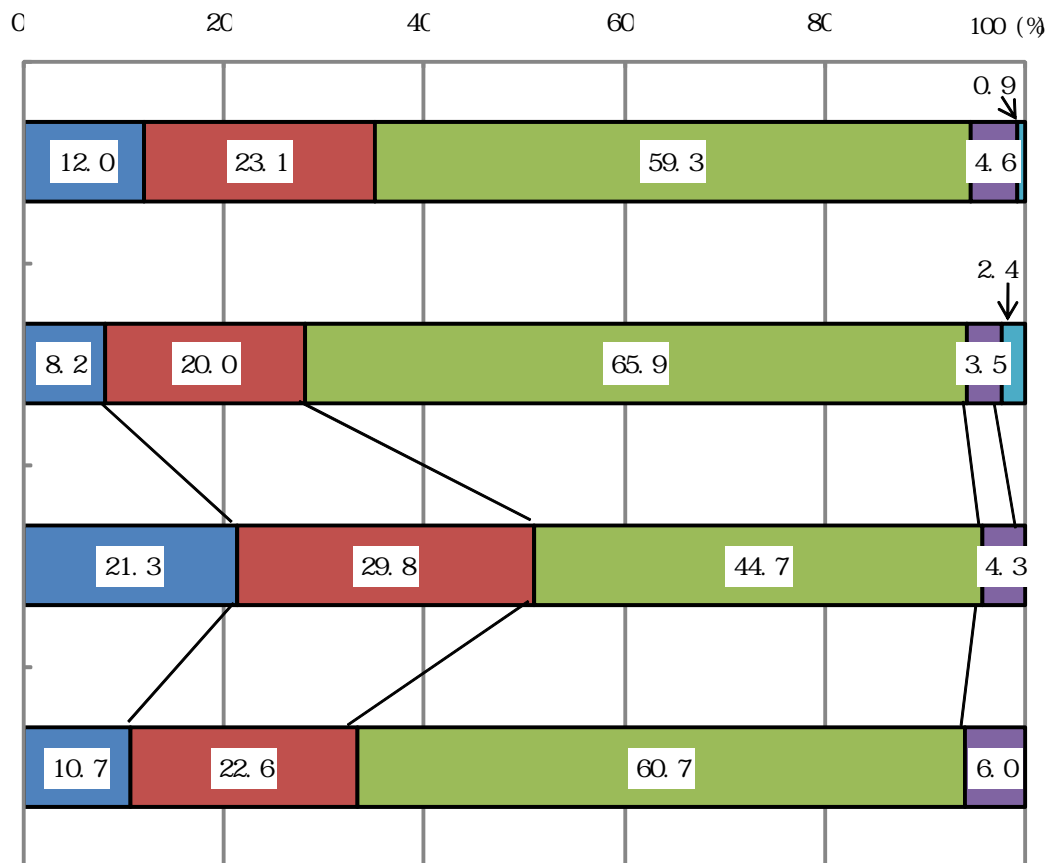
65.9

( 23)

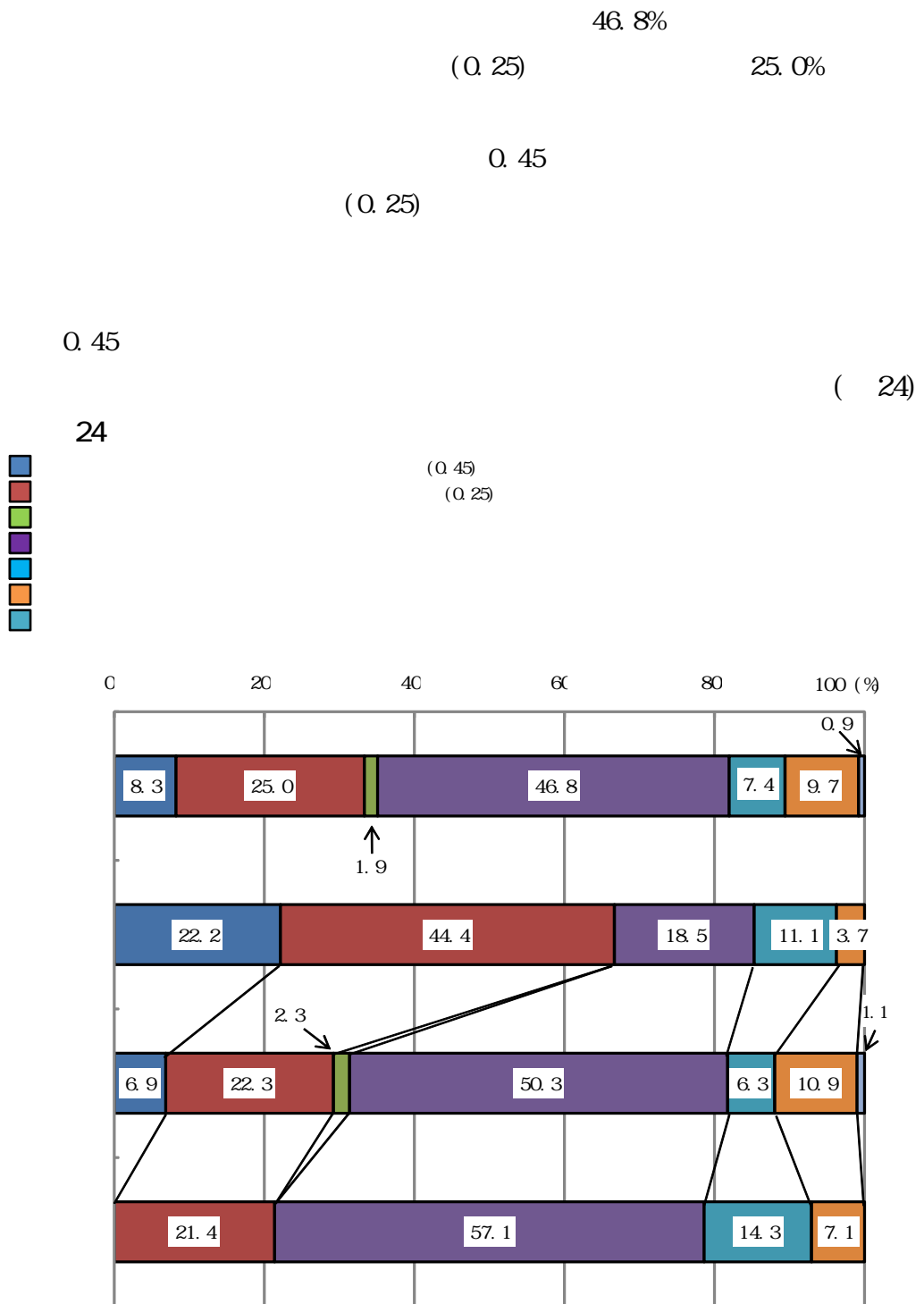
23



50  
80



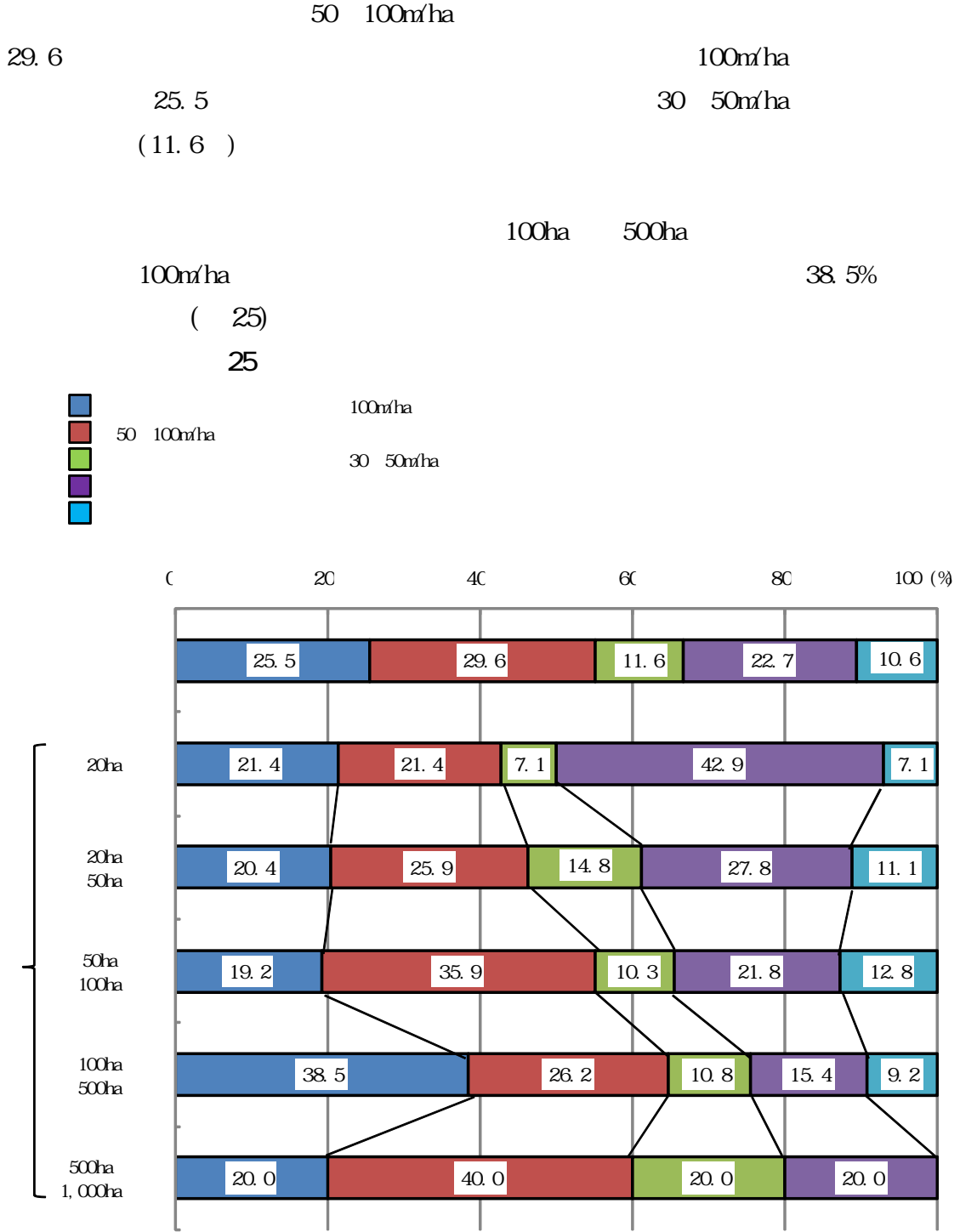
(5)



0.25

0.45

6



1,000ha

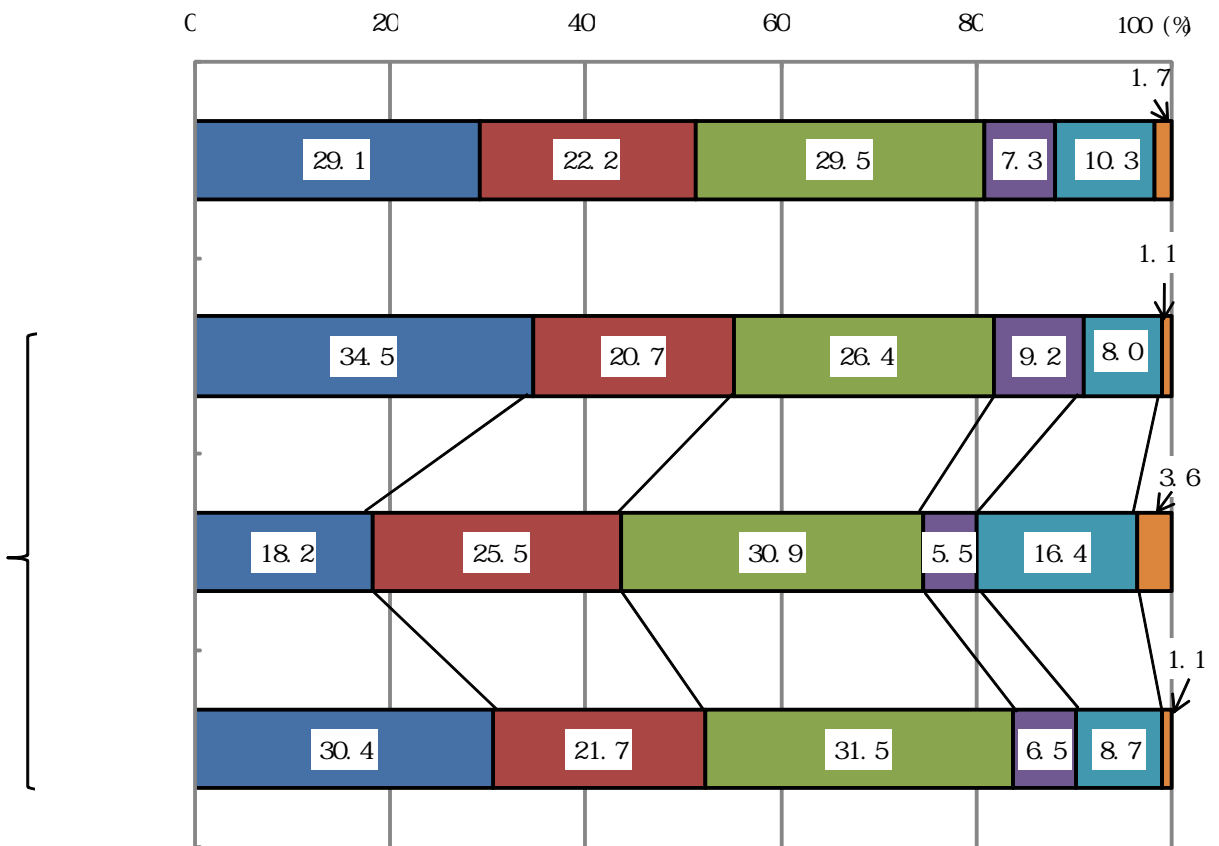


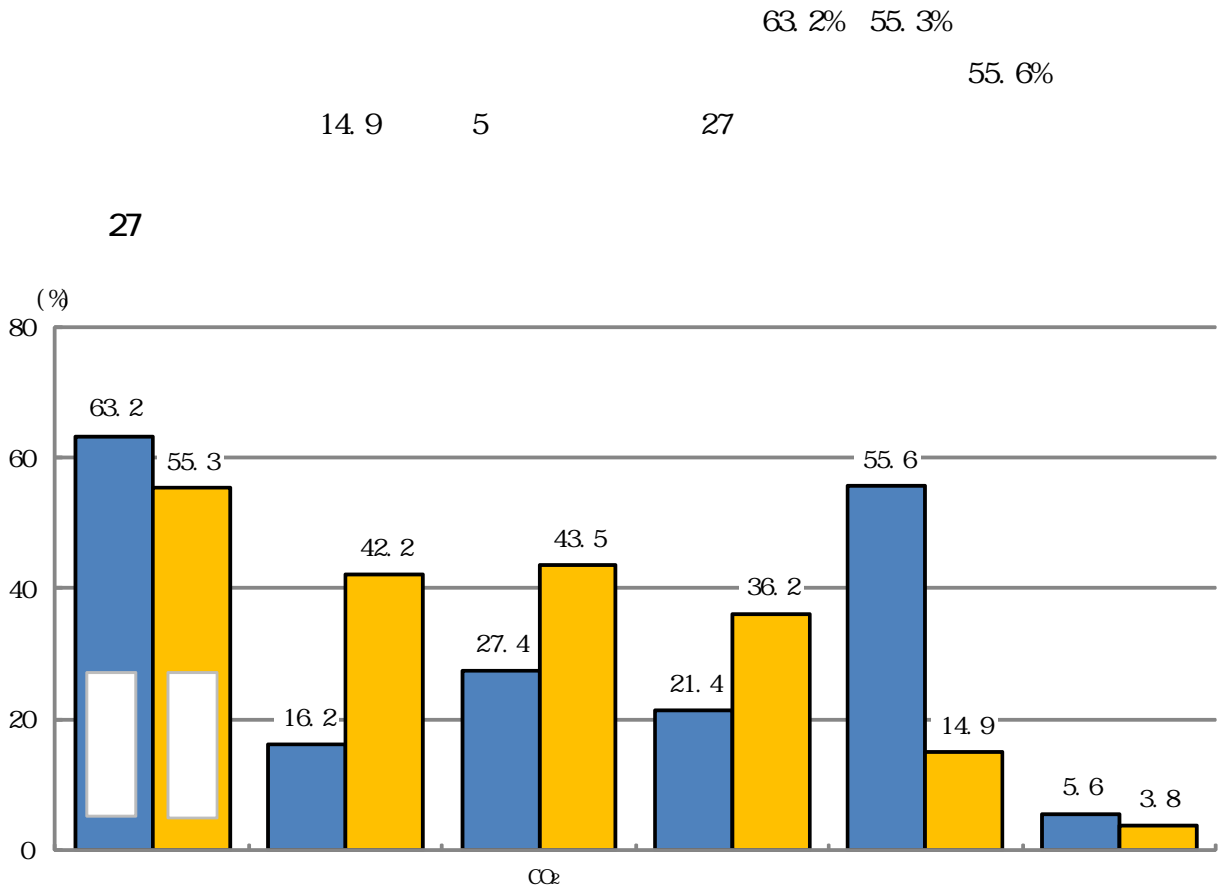
29.5% 29.1%  
22.2%

30.9 25.5

26

26







—

—

( )

1	1,599	100.0	35.4	64.6	1
2	63	100.0	31.7	68.3	2
3	111	100.0	28.8	71.2	3
4	614	100.0	37.5	62.5	4
5	65	100.0	40.0	60.0	5
6	117	100.0	31.6	68.4	6
7	287	100.0	34.5	65.5	7
8	157	100.0	35.7	64.3	8
9	165	100.0	35.8	64.2	9
10	20	100.0	35.0	65.0	10

( )

			20 29	30 39	40 49
1	1,599	100.0	7.7	22.3	23.8
2	63	100.0	3.2	25.4	44.4
3	111	100.0	11.7	23.4	20.7
4	614	100.0	6.8	21.5	24.1
5	65	100.0	13.8	24.6	20.0
6	117	100.0	4.3	13.7	35.0
7	287	100.0	8.0	24.7	22.3
8	157	100.0	8.3	21.7	22.3
9	165	100.0	8.5	23.6	15.8
10	20	100.0	10.0	35.0	15.0

( )

			20 29	30 39	40 49
1	566	100.0	6.7	17.7	17.5
2	20	100.0	0.0	30.0	15.0
3	32	100.0	6.3	6.3	18.8
4	230	100.0	6.1	18.3	16.5
5	26	100.0	7.7	15.4	23.1
6	37	100.0	0.0	21.6	32.4
7	99	100.0	11.1	18.2	15.2
8	56	100.0	5.4	12.5	14.3
9	59	100.0	8.5	18.6	16.9
10	7	100.0	14.3	28.6	14.3

( )

			20 29	30 39	40 49
1	1,033	100.0	8.2	24.9	27.3
2	43	100.0	4.7	23.3	58.1
3	79	100.0	13.9	30.4	21.5
4	384	100.0	7.3	23.4	28.6
5	39	100.0	17.9	30.8	17.9
6	80	100.0	6.3	10.0	36.3
7	188	100.0	6.4	28.2	26.1
8	101	100.0	9.9	26.7	26.7
9	106	100.0	8.5	26.4	15.1
10	13	100.0	7.7	38.5	15.4

50	64	65	
28.5		17.6	1
20.6		6.3	2
22.5		21.6	3
27.7		19.9	4
30.8		10.8	5
34.2		12.8	6
28.2		16.7	7
29.3		18.5	8
33.9		18.2	9
25.0		15.0	10

50	64	65	
31.4		26.7	1
40.0		15.0	2
28.1		40.6	3
30.4		28.7	4
34.6		19.2	5
21.6		24.3	6
29.3		26.3	7
39.3		28.6	8
37.3		18.6	9
14.3		28.6	10

50	64	65	
26.9		12.7	1
11.6		2.3	2
20.3		13.9	3
26.0		14.6	4
28.2		5.1	5
40.0		7.5	6
27.7		11.7	7
23.8		12.9	8
32.1		17.9	9
30.8		7.7	10

( )

					( )	( )	( )
		1	1,599	100.0	34.6	40.7	4.1
20	29	2	123	100.0	23.6	48.8	5.7
30	39	3	357	100.0	25.8	39.8	7.0
40	49	4	381	100.0	33.6	44.4	4.2
50	64	5	456	100.0	43.4	35.5	2.4
65		6	282	100.0	37.6	41.8	2.1
		7	566	100.0	40.6	36.2	3.5
20	29	8	38	100.0	31.6	42.1	5.3
30	39	9	100	100.0	36.0	36.0	6.0
40	49	10	99	100.0	38.4	35.4	4.0
50	64	11	178	100.0	48.9	29.8	3.4
65		12	151	100.0	37.7	43.0	1.3
		13	1,033	100.0	31.3	43.2	4.4
20	29	14	85	100.0	20.0	51.8	5.9
30	39	15	257	100.0	21.8	41.2	7.4
40	49	16	282	100.0	31.9	47.5	4.3
50	64	17	278	100.0	39.9	39.2	1.8
65		18	131	100.0	37.4	40.5	3.1

( )

		1	1,584	100.0	69.8	53.5	10.9
		2	553	100.0	65.5	58.2	8.0
		3	651	100.0	76.7	46.1	13.8
		4	65	100.0	67.7	67.7	15.4
		5	187	100.0	63.6	71.7	2.7
		6	20	100.0	80.0	45.0	10.0
		7	53	100.0	66.0	43.4	9.4
		8	31	100.0	74.2	25.8	45.2
		9	24	100.0	29.2	33.3	12.5

(2)



	( )	( )	( )					
11.7	1.3	3.3	1.9	1.5	0.8	0.1	1	
13.8	1.6	2.4	1.6	0.8	0.8	0.8	2	
16.8	2.2	2.5	2.8	1.4	1.7	-	3	
10.5	0.8	3.1	2.4	0.5	0.5	-	4	
10.7	0.9	3.7	1.1	1.5	0.7	-	5	
7.4	1.1	4.3	1.8	3.2	0.4	0.4	6	
7.4	1.6	3.7	3.4	2.7	0.7	0.2	7	
5.3	2.6	2.6	5.3	-	2.6	2.6	8	
9.0	3.0	3.0	3.0	3.0	1.0	-	9	
9.1	2.0	3.0	6.1	1.0	1.0	-	10	
9.0	1.1	3.9	1.7	2.2	-	-	11	
4.0	0.7	4.6	3.3	4.6	0.7	-	12	
14.0	1.1	3.1	1.2	0.9	0.9	0.1	13	
17.6	1.2	2.4	0.0	1.2	-	-	14	
19.8	1.9	2.3	2.7	0.8	1.9	-	15	
11.0	0.4	3.2	1.1	0.4	0.4	-	16	
11.9	0.7	3.6	0.7	1.1	1.1	-	17	
11.5	1.5	3.8	-	1.5	-	0.8	18	

17.2	38.6	1.2	5.0	1
12.1	47.4	1.6	3.4	2
22.7	31.6	0.5	4.6	3
15.4	30.8	-	1.5	4
13.4	36.9	1.1	5.9	5
35.0	25.0	-	5.0	6
11.3	47.2	7.5	9.4	7
9.7	25.8	3.2	16.1	8
29.2	66.7	-	29.2	9

		1	1,584	100.0	69.8	53.5	10.9
20	29	2	121	100.0	80.2	54.5	12.4
30	39	3	351	100.0	78.9	52.4	14.5
40	49	4	379	100.0	79.4	54.1	9.5
50	64	5	453	100.0	64.0	52.8	8.6
65		6	280	100.0	50.0	55.0	11.4
		7	561	100.0	70.4	44.2	16.6
20	29	8	36	100.0	75.0	47.2	19.4
30	39	9	99	100.0	77.8	43.4	26.3
40	49	10	98	100.0	87.8	41.8	16.3
50	64	11	178	100.0	68.0	46.1	10.7
65		12	150	100.0	56.0	43.3	16.7
		13	1,023	100.0	69.4	58.7	7.8
20	29	14	85	100.0	82.4	57.6	9.4
30	39	15	252	100.0	79.4	56.0	9.9
40	49	16	281	100.0	76.5	58.4	7.1
50	64	17	275	100.0	61.5	57.1	7.3
65		18	130	100.0	43.1	68.5	5.4

( )

		1	1,584	100.0	87.1	0.7	12.1
		2	553	100.0	89.5	0.7	9.6
		3	651	100.0	85.3	0.8	13.8
		4	65	100.0	83.1	1.5	13.8
		5	187	100.0	86.1	0.5	13.4
		6	20	100.0	90.0	-	10.0
		7	53	100.0	96.2	-	3.8
		8	31	100.0	77.4	-	22.6
		9	24	100.0	87.5	-	12.5

(2)

17.2	38.6	1.2	5.0	1
29.8	14.9	-	5.0	2
17.9	24.2	2.0	4.6	3
18.5	29.6	0.3	5.0	4
14.6	50.1	1.1	5.7	5
13.6	60.4	2.1	4.3	6
16.2	40.3	2.0	6.6	7
27.8	16.7	-	8.3	8
19.2	21.2	3.0	7.1	9
17.3	25.5	-	7.1	10
13.5	49.4	2.2	6.7	11
14.0	57.3	2.7	5.3	12
17.8	37.6	0.8	4.1	13
30.6	14.1	-	3.5	14
17.5	25.4	1.6	3.6	15
18.9	31.0	0.4	4.3	16
15.3	50.5	0.4	5.1	17
13.1	63.8	1.5	3.1	18

0.2	1
0.2	2
0.2	3
1.5	4
-	5
-	6
-	7
-	8
-	9

		1	1,584	100.0	87.1	0.7	12.1
20	29	2	121	100.0	78.5	1.7	19.8
30	39	3	351	100.0	81.2	0.3	17.9
40	49	4	379	100.0	83.4	0.5	16.1
50	64	5	453	100.0	91.6	1.3	6.8
65		6	280	100.0	95.7	-	4.3
		7	561	100.0	87.0	0.9	11.6
20	29	8	36	100.0	83.3	-	16.7
30	39	9	99	100.0	78.8	-	19.2
40	49	10	98	100.0	79.6	-	20.4
50	64	11	178	100.0	90.4	2.8	6.2
65		12	150	100.0	94.0	-	6.0
		13	1,023	100.0	87.1	0.6	12.3
20	29	14	85	100.0	76.5	2.4	21.2
30	39	15	252	100.0	82.1	0.4	17.5
40	49	16	281	100.0	84.7	0.7	14.6
50	64	17	275	100.0	92.4	0.4	7.3
65		18	130	100.0	97.7	-	2.3

		1	553	100.0	89.5	0.7	9.6
20	29	2	29	100.0	82.8	3.4	13.8
30	39	3	92	100.0	84.8	-	14.1
40	49	4	128	100.0	81.3	0.8	18.0
50	64	5	198	100.0	93.9	1.0	5.1
65		6	106	100.0	97.2	-	2.8
		7	230	100.0	90.9	0.9	7.8
20	29	8	12	100.0	91.7	-	8.3
30	39	9	36	100.0	88.9	-	8.3
40	49	10	38	100.0	81.6	-	18.4
50	64	11	87	100.0	93.1	2.3	4.6
65		12	57	100.0	94.7	-	5.3
		13	323	100.0	88.5	0.6	10.8
20	29	14	17	100.0	76.5	5.9	17.6
30	39	15	56	100.0	82.1	-	17.9
40	49	16	90	100.0	81.1	1.1	17.8
50	64	17	111	100.0	94.6	-	5.4
65		18	49	100.0	100.0	-	-

0.2	1
-	2
0.6	3
-	4
0.2	5
-	6
0.5	7
-	8
2.0	9
-	10
0.6	11
-	12
-	13
-	14
-	15
-	16
-	17
-	18

0.2	651	100.0	85.3	0.8	13.8	0.2	1
-	60	100.0	78.3	1.7	20.0	-	2
1.1	142	100.0	77.5	0.7	21.8	-	3
-	169	100.0	84.0	0.6	15.4	-	4
-	162	100.0	90.1	1.2	8.0	0.6	5
-	118	100.0	93.2	-	6.8	-	6
0.4	205	100.0	83.4	0.5	15.6	0.5	7
-	16	100.0	75.0	-	25.0	-	8
2.8	36	100.0	72.2	-	27.8	-	9
-	35	100.0	74.3	-	25.7	-	10
-	53	100.0	88.7	1.9	7.5	1.9	11
-	65	100.0	92.3	-	7.7	-	12
-	446	100.0	86.1	0.9	13.0	-	13
-	44	100.0	79.5	2.3	18.2	-	14
-	106	100.0	79.2	0.9	19.8	-	15
-	134	100.0	86.6	0.7	12.7	-	16
-	109	100.0	90.8	0.9	8.3	-	17
-	53	100.0	94.3	-	5.7	-	18

		1	65	100.0	83.1	1.5	13.8
20	29	2	7	100.0	71.4	-	28.6
30	39	3	25	100.0	76.0	-	20.0
40	49	4	16	100.0	87.5	-	12.5
50	64	5	11	100.0	90.9	9.1	-
65		6	6	100.0	100.0	-	-
		7	20	100.0	75.0	5.0	15.0
20	29	8	2	100.0	50.0	-	50.0
30	39	9	6	100.0	66.7	-	16.7
40	49	10	4	100.0	75.0	-	25.0
50	64	11	6	100.0	83.3	16.7	-
65		12	2	100.0	100.0	-	-
		13	45	100.0	86.7	-	13.3
20	29	14	5	100.0	80.0	-	20.0
30	39	15	19	100.0	78.9	-	21.1
40	49	16	12	100.0	91.7	-	8.3
50	64	17	5	100.0	100.0	-	-
65		18	4	100.0	100.0	-	-

		1	20	100.0	90.0	-	10.0
20	29	2	2	100.0	100.0	-	-
30	39	3	8	100.0	87.5	-	12.5
40	49	4	3	100.0	66.7	-	33.3
50	64	5	4	100.0	100.0	-	-
65		6	3	100.0	100.0	-	-
		7	9	100.0	100.0	-	-
20	29	8	1	100.0	100.0	-	-
30	39	9	3	100.0	100.0	-	-
40	49	10	2	100.0	100.0	-	-
50	64	11	2	100.0	100.0	-	-
65		12	1	100.0	100.0	-	-
		13	11	100.0	81.8	-	18.2
20	29	14	1	100.0	100.0	-	-
30	39	15	5	100.0	80.0	-	20.0
40	49	16	1	100.0	-	-	100.0
50	64	17	2	100.0	100.0	-	-
65		18	2	100.0	100.0	-	-

1.5	187	100.0	86.1	0.5	13.4	-	1
-	17	100.0	70.6	-	29.4	-	2
4.0	60	100.0	85.0	-	15.0	-	3
-	40	100.0	87.5	-	12.5	-	4
-	49	100.0	85.7	2.0	12.2	-	5
-	21	100.0	100.0	-	-	-	6
5.0	42	100.0	81.0	2.4	16.7	-	7
-	2	100.0	100.0	-	-	-	8
16.7	9	100.0	66.7	-	33.3	-	9
-	9	100.0	77.8	-	22.2	-	10
-	16	100.0	81.3	6.3	12.5	-	11
-	6	100.0	100.0	-	-	-	12
-	145	100.0	87.6	-	12.4	-	13
-	15	100.0	66.7	-	33.3	-	14
-	51	100.0	88.2	-	11.8	-	15
-	31	100.0	90.3	-	9.7	-	16
-	33	100.0	87.9	-	12.1	-	17
-	15	100.0	100.0	-	-	-	18

-	53	100.0	96.2	-	3.8	-	1
-	3	100.0	100.0	-	-	-	2
-	9	100.0	100.0	-	-	-	3
-	12	100.0	91.7	-	8.3	-	4
-	17	100.0	94.1	-	5.9	-	5
-	12	100.0	100.0	-	-	-	6
-	21	100.0	100.0	-	-	-	7
-	1	100.0	100.0	-	-	-	8
-	3	100.0	100.0	-	-	-	9
-	3	100.0	100.0	-	-	-	10
-	7	100.0	100.0	-	-	-	11
-	7	100.0	100.0	-	-	-	12
-	32	100.0	93.8	-	6.3	-	13
-	2	100.0	100.0	-	-	-	14
-	6	100.0	100.0	-	-	-	15
-	9	100.0	88.9	-	11.1	-	16
-	10	100.0	90.0	-	10.0	-	17
-	5	100.0	100.0	-	-	-	18

		1	31	100.0	77.4	-	22.6
20	29	2	2	100.0	100.0	-	-
30	39	3	10	100.0	70.0	-	30.0
40	49	4	9	100.0	77.8	-	22.2
50	64	5	5	100.0	80.0	-	20.0
65		6	5	100.0	80.0	-	20.0
		7	19	100.0	78.9	-	21.1
20	29	8	2	100.0	100.0	-	-
30	39	9	3	100.0	66.7	-	33.3
40	49	10	6	100.0	83.3	-	16.7
50	64	11	3	100.0	66.7	-	33.3
65		12	5	100.0	80.0	-	20.0
		13	12	100.0	75.0	-	25.0
20	29	14	-	-	-	-	-
30	39	15	7	100.0	71.4	-	28.6
40	49	16	3	100.0	66.7	-	33.3
50	64	17	2	100.0	100.0	-	-
65		18	-	-	-	-	-

( )

		1	1,584	100.0	69.8	53.5	10.9
		2	1,379	100.0	68.2	54.5	9.5
		3	11	100.0	72.7	63.6	18.2
		4	191	100.0	81.2	45.5	20.4



-	24	100.0	87.5	-	12.5	-	1
-	1	100.0	-	-	100.0	-	2
-	5	100.0	80.0	-	20.0	-	3
-	2	100.0	50.0	-	50.0	-	4
-	7	100.0	100.0	-	-	-	5
-	9	100.0	100.0	-	-	-	6
-	15	100.0	93.3	-	6.7	-	7
-	-	-	-	-	-	-	8
-	3	100.0	66.7	-	33.3	-	9
-	1	100.0	100.0	-	-	-	10
-	4	100.0	100.0	-	-	-	11
-	7	100.0	100.0	-	-	-	12
-	9	100.0	77.8	-	22.2	-	13
-	1	100.0	-	-	100.0	-	14
-	2	100.0	100.0	-	-	-	15
-	1	100.0	-	-	100.0	-	16
-	3	100.0	100.0	-	-	-	17
-	2	100.0	100.0	-	-	-	18

17.2	38.6	1.2	5.0	1
17.2	41.6	1.1	4.7	2
-	18.2	9.1	-	3
18.8	18.3	1.6	7.3	4



54.7	11.7	20.8	3.6	1
60.8	13.1	15.4	3.6	2
53.0	9.4	22.3	2.7	3
51.9	5.6	24.1	5.6	4
47.2	14.9	28.0	3.1	5
50.0	11.1	33.3	5.6	6
58.8	9.8	23.5	3.9	7
33.3	20.8	37.5	4.2	8
38.1	23.8	9.5	19.0	9

54.7	11.7	20.8	3.6	1
54.7	5.3	32.6	6.3	2
54.7	11.6	22.5	4.6	3
55.7	8.5	24.1	3.2	4
57.6	11.6	19.0	3.4	5
48.9	17.9	13.8	2.2	6
58.8	13.3	17.8	2.9	7
70.0	3.3	23.3	10.0	8
62.8	10.3	23.1	3.8	9
59.0	14.1	24.4	1.3	10
64.0	11.2	16.1	2.5	11
48.2	19.1	12.1	2.1	12
52.4	10.8	22.4	3.9	13
47.7	6.2	36.9	4.6	14
51.7	12.1	22.2	4.8	15
54.6	6.7	23.9	3.8	16
53.5	11.8	20.9	3.9	17
49.6	16.5	15.7	2.4	18

( )

	1	11	100.0	9.1	63.6	72.7
	2	4	100.0	25.0	25.0	100.0
	3	5	100.0	-	100.0	60.0
	4	1	100.0	-	-	100.0
	5	1	100.0	-	100.0	-
	6	-	-	-	-	-
	7	-	-	-	-	-
	8	-	-	-	-	-
	9	-	-	-	-	-

(4)

( )

		1	13	100.0	7.7	7.7	-
20	29	2	1	100.0	-	-	-
30	39	3	6	100.0	-	16.7	-
40	49	4	2	100.0	-	-	-
50	64	5	3	100.0	33.3	-	-
65		6	1	100.0	-	-	-
		7	4	100.0	-	25.0	-
20	29	8	1	100.0	-	-	-
30	39	9	1	100.0	-	100.0	-
40	49	10	1	100.0	-	-	-
50	64	11	-	-	-	-	-
65		12	1	100.0	-	-	-
		13	9	100.0	11.1	-	-
20	29	14	-	-	-	-	-
30	39	15	5	100.0	-	-	-
40	49	16	1	100.0	-	-	-
50	64	17	3	100.0	33.3	-	-
65		18	-	-	-	-	-

(2)



( )

		1	1,599	22.3	8.7	13.6	31.7
20	29	2	123	22.0	6.5	15.4	32.5
30	39	3	357	19.6	5.9	13.7	28.9
40	49	4	381	16.5	5.2	11.3	28.9
50	64	5	456	25.0	11.0	14.0	33.3
65		6	282	29.1	14.2	14.9	36.2
		7	566	27.9	11.7	16.3	32.3
20	29	8	38	28.9	7.9	21.1	36.8
30	39	9	100	31.0	11.0	20.0	34.0
40	49	10	99	21.2	9.1	12.1	27.3
50	64	11	178	29.8	11.8	18.0	35.4
65		12	151	27.8	14.6	13.2	29.8
		13	1,033	19.2	7.1	12.1	31.4
20	29	14	85	18.8	5.9	12.9	30.6
30	39	15	257	15.2	3.9	11.3	26.8
40	49	16	282	14.9	3.9	11.0	29.4
50	64	17	278	21.9	10.4	11.5	32.0
65		18	131	30.5	13.7	16.8	43.5

( )

		1	38.5	14.3	24.1	18.5	2.9
20	29	2	32.5	6.5	26.0	19.5	3.3
30	39	3	35.9	10.9	24.9	17.1	3.4
40	49	4	29.1	6.3	22.8	13.9	1.0
50	64	5	41.9	19.5	22.4	19.1	2.2
65		6	51.4	24.5	27.0	25.2	6.0
		7	42.6	17.0	25.6	22.6	4.4
20	29	8	36.8	10.5	26.3	31.6	5.3
30	39	9	54.0	20.0	34.0	24.0	8.0
40	49	10	30.3	8.1	22.2	14.1	1.0
50	64	11	43.3	19.7	23.6	24.2	2.2
65		12	43.7	19.2	24.5	23.2	6.6
		13	36.2	12.9	23.3	16.3	2.1
20	29	14	30.6	4.7	25.9	14.1	2.4
30	39	15	28.8	7.4	21.4	14.4	1.6
40	49	16	28.7	5.7	23.0	13.8	1.1
50	64	17	41.0	19.4	21.6	15.8	2.2
65		18	60.3	30.5	29.8	27.5	5.3

13.8	17.9	20.6	6.1	14.5	1
8.9	23.6	18.7	2.4	16.3	2
9.5	19.3	19.9	6.4	13.4	3
12.1	16.8	14.2	2.9	11.3	4
16.7	16.7	20.6	7.5	13.2	5
18.8	17.4	30.9	9.2	21.6	6
14.7	17.7	24.7	7.6	17.1	7
5.3	31.6	23.7	2.6	21.1	8
15.0	19.0	30.0	10.0	20.0	9
12.1	15.2	19.2	4.0	15.2	10
16.9	18.5	21.3	7.3	14.0	11
15.9	13.9	29.1	9.9	19.2	12
13.3	18.1	18.3	5.2	13.1	13
10.6	20.0	16.5	2.4	14.1	14
7.4	19.5	16.0	5.1	10.9	15
12.1	17.4	12.4	2.5	9.9	16
16.5	15.5	20.1	7.6	12.6	17
22.1	21.4	32.8	8.4	24.4	18

15.6	1
16.3	2
13.7	3
12.9	4
16.9	5
19.1	6
18.2	7
26.3	8
16.0	9
13.1	10
21.9	11
16.6	12
14.1	13
11.8	14
12.8	15
12.8	16
13.7	17
22.1	18

( )

	(						
1	1,599	100.0	16.2	35.0	14.8	29.3	
2	63	100.0	22.2	41.3	17.5	39.7	
3	111	100.0	13.5	34.2	9.0	27.9	
4	614	100.0	15.8	33.9	16.8	28.3	
5	65	100.0	23.1	35.4	12.3	27.7	
6	117	100.0	13.7	32.5	21.4	32.5	
7	287	100.0	18.8	38.0	14.6	27.2	
8	157	100.0	16.6	35.7	10.2	28.7	
9	165	100.0	12.1	31.5	12.1	33.9	
10	20	100.0	10.0	45.0	10.0	20.0	
11	1,599	100.0	16.2	35.0	14.8	29.3	
20	29	12	123	100.0	24.4	13.0	31.7
30	39	13	357	100.0	18.5	34.7	14.8
40	49	14	381	100.0	20.2	36.5	18.6
50	64	15	456	100.0	11.4	32.0	12.3
65		16	282	100.0	13.8	42.6	14.5
17	566	100.0	19.3	32.5	14.5	27.0	
20	29	18	38	100.0	26.3	15.8	13.2
30	39	19	100	100.0	19.0	32.0	12.0
40	49	20	99	100.0	26.3	33.3	18.2
50	64	21	178	100.0	18.0	28.7	12.4
65		22	151	100.0	14.6	41.1	16.6
23	1,033	100.0	14.5	36.3	15.0	30.6	
20	29	24	85	100.0	17.6	28.2	12.9
30	39	25	257	100.0	18.3	35.8	16.0
40	49	26	282	100.0	18.1	37.6	18.8
50	64	27	278	100.0	7.2	34.2	12.2
65		28	131	100.0	13.0	44.3	12.2
29	1,599	100.0	9.1	15.4	3.6	8.2	
30	1,599	100.0	2.9	10.8	5.6	12.5	
31	1,599	100.0	4.3	8.8	5.6	8.6	



49.7	41.9	31.1	24.8	49.8	3.6	1
41.3	44.4	31.7	14.3	44.4	3.2	2
44.1	47.7	43.2	22.5	50.5	3.6	3
50.0	41.2	31.3	26.7	46.9	4.2	4
64.6	44.6	23.1	18.5	46.2	4.6	5
48.7	41.9	33.3	13.7	54.7	3.4	6
46.7	41.5	29.3	25.8	53.0	2.8	7
50.3	42.0	27.4	28.7	54.8	2.5	8
54.5	37.6	32.1	27.9	50.3	3.6	9
55.0	55.0	20.0	30.0	45.0	-	10
49.7	41.9	31.1	24.8	49.8	3.6	11
45.5	41.5	43.1	26.8	48.8	1.6	12
45.4	39.5	35.6	25.8	47.9	3.4	13
50.1	41.5	29.9	21.5	47.2	3.4	14
52.6	43.9	28.9	27.6	51.3	4.6	15
51.8	42.6	25.5	22.7	53.5	3.2	16
50.5	42.6	30.7	25.3	48.4	5.3	17
52.6	26.3	47.4	23.7	44.7	2.6	18
51.0	44.0	32.0	29.0	50.0	3.0	19
42.4	40.4	32.3	24.2	44.4	7.1	20
51.1	43.8	29.8	28.1	47.8	7.3	21
54.3	45.7	25.8	20.5	51.7	4.0	22
49.3	41.5	31.4	24.6	50.5	2.6	23
42.4	48.2	41.2	28.2	50.6	1.2	24
43.2	37.7	37.0	24.5	47.1	3.5	25
52.8	41.8	29.1	20.6	48.2	2.1	26
53.6	43.9	28.4	27.3	53.6	2.9	27
48.9	38.9	25.2	25.2	55.7	2.3	28
19.0	13.1	6.8	3.6	19.2	1.7	29
20.4	16.6	10.8	7.8	11.4	0.3	30
10.3	12.3	13.5	13.4	19.1	1.6	31

( )

		(			
1		1,599	100.0	15.1	53.4
2		63	100.0	30.2	27.0
3		111	100.0	16.2	45.9
4		614	100.0	14.5	54.7
5		65	100.0	13.8	47.7
6		117	100.0	13.7	54.7
7		287	100.0	15.3	51.2
8		157	100.0	12.7	65.0
9		165	100.0	14.5	58.8
10		20	100.0	10.0	45.0
11		1,599	100.0	15.1	53.4
20	29	123	100.0	17.9	33.3
30	39	357	100.0	21.0	42.3
40	49	381	100.0	16.3	37.0
50	64	456	100.0	11.6	67.3
65		282	100.0	10.3	75.9
17		566	100.0	15.2	60.6
20	29	38	100.0	18.4	47.4
30	39	100	100.0	26.0	44.0
40	49	99	100.0	14.1	41.4
50	64	178	100.0	12.4	71.9
65		151	100.0	11.3	74.2
23		1,033	100.0	15.0	49.5
20	29	85	100.0	17.6	27.1
30	39	257	100.0	19.1	41.6
40	49	282	100.0	17.0	35.5
50	64	278	100.0	11.2	64.4
65		131	100.0	9.2	77.9

31.0	0.5	1
41.3	1.6	2
36.9	0.9	3
30.3	0.5	4
38.5	-	5
30.8	0.9	6
32.8	0.7	7
22.3	-	8
26.7	-	9
45.0	-	10
31.0	0.5	11
48.8	-	12
36.1	0.6	13
45.9	0.8	14
20.6	0.4	15
13.5	0.4	16
23.7	0.5	17
34.2	-	18
30.0	-	19
43.4	1.0	20
15.2	0.6	21
13.9	0.7	22
35.0	0.5	23
55.3	-	24
38.5	0.8	25
46.8	0.7	26
24.1	0.4	27
13.0	-	28

( )

	(						
1	854	100.0	19.7	51.4	17.6	10.8	
2	17	100.0	29.4	29.4	41.2	-	
3	51	100.0	15.7	62.7	11.8	9.8	
4	336	100.0	19.9	49.7	19.9	10.1	
5	31	100.0	12.9	61.3	16.1	9.7	
6	64	100.0	12.5	56.3	20.3	10.9	
7	147	100.0	12.9	55.8	19.0	11.6	
8	102	100.0	27.5	51.0	10.8	9.8	
9	97	100.0	26.8	43.3	12.4	15.5	
10	9	100.0	33.3	44.4	11.1	11.1	
11	854	100.0	19.7	51.4	17.6	10.8	
20 29 12	41	100.0	24.4	46.3	17.1	9.8	
30 39 13	151	100.0	27.2	41.7	21.2	9.9	
40 49 14	141	100.0	21.3	39.0	27.7	11.3	
50 64 15	307	100.0	18.2	56.4	14.0	10.7	
65 16	214	100.0	14.5	60.3	13.6	11.2	
17	343	100.0	18.4	58.6	12.5	9.9	
20 29 18	18	100.0	22.2	61.1	5.6	5.6	
30 39 19	44	100.0	25.0	50.0	22.7	2.3	
40 49 20	41	100.0	14.6	53.7	19.5	12.2	
50 64 21	128	100.0	17.2	62.5	7.8	12.5	
65 22	112	100.0	17.9	58.9	12.5	9.8	
23	511	100.0	20.5	46.6	20.9	11.4	
20 29 24	23	100.0	26.1	34.8	26.1	13.0	
30 39 25	107	100.0	28.0	38.3	20.6	13.1	
40 49 26	100	100.0	24.0	33.0	31.0	11.0	
50 64 27	179	100.0	19.0	52.0	18.4	9.5	
65 28	102	100.0	10.8	61.8	14.7	12.7	

(2)

0.6	1
-	2
-	3
0.3	4
-	5
-	6
0.7	7
1.0	8
2.1	9
-	10
0.6	11
2.4	12
-	13
0.7	14
0.7	15
0.5	16
0.6	17
5.6	18
-	19
-	20
-	21
0.9	22
0.6	23
-	24
-	25
1.0	26
1.1	27
-	28

( )

2

	(							
1		854	100.0	58.7	65.9	9.1	39.1	
2		17	100.0	52.9	64.7	5.9	52.9	
3		51	100.0	76.5	58.8	7.8	37.3	
4		336	100.0	59.5	67.3	8.9	39.6	
5		31	100.0	71.0	51.6	9.7	32.3	
6		64	100.0	65.6	62.5	3.1	32.8	
7		147	100.0	55.8	70.7	10.2	36.7	
8		102	100.0	57.8	63.7	8.8	40.2	
9		97	100.0	45.4	70.1	10.3	44.3	
10		9	100.0	44.4	33.3	44.4	44.4	
11		854	100.0	58.7	65.9	9.1	39.1	
20	29	12	41	100.0	34.1	68.3	12.2	41.5
30	39	13	151	100.0	49.7	68.2	10.6	43.7
40	49	14	141	100.0	60.3	67.4	9.2	30.5
50	64	15	307	100.0	62.5	65.5	8.8	40.4
65		16	214	100.0	63.1	63.6	7.9	39.3
17		343	100.0	69.7	58.6	10.8	37.3	
20	29	18	18	100.0	44.4	66.7	16.7	44.4
30	39	19	44	100.0	70.5	50.0	11.4	45.5
40	49	20	41	100.0	68.3	58.5	12.2	26.8
50	64	21	128	100.0	69.5	57.0	10.2	42.2
65		22	112	100.0	74.1	62.5	9.8	31.3
23		511	100.0	51.3	70.8	8.0	40.3	
20	29	24	23	100.0	26.1	69.6	8.7	39.1
30	39	25	107	100.0	41.1	75.7	10.3	43.0
40	49	26	100	100.0	57.0	71.0	8.0	32.0
50	64	27	179	100.0	57.5	71.5	7.8	39.1
65		28	102	100.0	51.0	64.7	5.9	48.0

(2)

18.5	4.9	1
23.5	-	2
9.8	9.8	3
16.4	3.9	4
19.4	9.7	5
28.1	6.3	6
21.1	2.7	7
23.5	4.9	8
14.4	8.2	9
11.1	-	10
18.5	4.9	11
19.5	9.8	12
15.9	6.6	13
24.1	5.7	14
16.3	3.6	15
19.6	4.2	16
16.6	3.5	17
11.1	11.1	18
9.1	6.8	19
26.8	4.9	20
14.8	1.6	21
18.8	2.7	22
19.8	5.9	23
26.1	8.7	24
18.7	6.5	25
23.0	6.0	26
17.3	5.0	27
20.6	5.9	28

( )

	(				CSR	
1	1,599	100.0	19.9	32.3	12.3	22.3
2	63	100.0	27.0	30.2	15.9	19.0
3	111	100.0	14.4	28.8	12.6	25.2
4	614	100.0	19.4	31.4	14.2	21.2
5	65	100.0	20.0	43.1	9.2	12.3
6	117	100.0	16.2	35.9	12.0	17.1
7	287	100.0	20.6	33.8	13.2	23.0
8	157	100.0	17.2	33.8	8.9	25.5
9	165	100.0	27.9	27.3	7.9	27.3
10	20	100.0	15.0	35.0	5.0	40.0
11	1,599	100.0	19.9	32.3	12.3	22.3
20 29 12	123	100.0	23.6	33.3	12.2	21.1
30 39 13	357	100.0	19.6	34.7	13.7	21.6
40 49 14	381	100.0	23.9	33.6	13.9	17.3
50 64 15	456	100.0	16.9	29.8	12.7	23.9
65 16	282	100.0	18.4	30.9	7.8	28.0
17	566	100.0	23.0	32.9	8.8	22.4
20 29 18	38	100.0	31.6	36.8	10.5	13.2
30 39 19	100	100.0	17.0	42.0	6.0	24.0
40 49 20	99	100.0	29.3	32.3	9.1	16.2
50 64 21	178	100.0	20.2	28.1	12.9	25.3
65 22	151	100.0	23.8	31.8	5.3	24.5
23	1,033	100.0	18.3	31.9	14.2	22.3
20 29 24	85	100.0	20.0	31.8	12.9	24.7
30 39 25	257	100.0	20.6	31.9	16.7	20.6
40 49 26	282	100.0	22.0	34.0	15.6	17.7
50 64 27	278	100.0	14.7	30.9	12.6	23.0
65 28	131	100.0	12.2	29.8	10.7	32.1



11.9	1.3	1
7.9	-	2
17.1	1.8	3
12.1	1.8	4
13.8	1.5	5
18.8	-	6
9.1	0.3	7
12.1	2.5	8
9.1	0.6	9
5.0	-	10
11.9	1.3	11
8.9	0.8	12
9.8	0.6	13
10.5	0.8	14
14.9	1.8	15
12.8	2.1	16
11.5	1.4	17
7.9	-	18
11.0	-	19
13.1	-	20
11.2	2.2	21
11.9	2.6	22
12.1	1.2	23
9.4	1.2	24
9.3	0.8	25
9.6	1.1	26
17.3	1.4	27
13.7	1.5	28

( )

	(				00	
1	1,599	100.0	55.3	42.2	43.5	36.2
2	63	100.0	55.6	44.4	46.0	44.4
3	111	100.0	56.8	42.3	43.2	31.5
4	614	100.0	54.9	42.3	43.6	36.0
5	65	100.0	60.0	38.5	43.1	32.3
6	117	100.0	59.8	50.4	37.6	28.2
7	287	100.0	52.6	46.7	41.5	39.4
8	157	100.0	56.1	40.1	47.8	32.5
9	165	100.0	54.5	30.9	46.1	40.6
10	20	100.0	60.0	35.0	40.0	50.0
11	1,599	100.0	55.3	42.2	43.5	36.2
20 29 12	123	100.0	35.0	55.3	52.0	37.4
30 39 13	357	100.0	45.9	46.8	45.9	39.2
40 49 14	381	100.0	50.1	43.3	49.9	33.6
50 64 15	456	100.0	64.0	39.9	36.2	35.7
65 16	282	100.0	69.1	32.6	39.7	36.2
17	566	100.0	58.1	39.0	36.7	36.7
20 29 18	38	100.0	28.9	55.3	42.1	39.5
30 39 19	100	100.0	44.0	49.0	35.0	43.0
40 49 20	99	100.0	46.5	44.4	43.4	32.3
50 64 21	178	100.0	65.2	34.3	35.4	35.4
65 22	151	100.0	74.2	30.5	33.8	36.4
23	1,033	100.0	53.8	43.9	47.1	35.9
20 29 24	85	100.0	37.6	55.3	56.5	36.5
30 39 25	257	100.0	46.7	45.9	50.2	37.7
40 49 26	282	100.0	51.4	42.9	52.1	34.0
50 64 27	278	100.0	63.3	43.5	36.7	36.0
65 28	131	100.0	63.4	35.1	46.6	35.9

14.9	3.8	1
6.3	1.6	2
15.3	4.5	3
15.1	3.9	4
13.8	6.2	5
17.9	4.3	6
12.5	3.5	7
14.0	3.2	8
20.6	4.2	9
10.0	-	10
14.9	3.8	11
13.8	2.4	12
17.4	2.0	13
15.2	4.7	14
15.1	4.4	15
11.3	4.6	16
18.4	6.0	17
26.3	5.3	18
21.0	6.0	19
21.2	9.1	20
20.2	4.5	21
10.6	6.0	22
13.0	2.6	23
8.2	1.2	24
16.0	0.4	25
13.1	3.2	26
11.9	4.3	27
12.2	3.1	28

( )

1	234	100.0	87.6		4.7	0.4	0.4
2	12	100.0	83.3		8.3		
3	43	100.0	81.4		7.0		
4	34	100.0	85.3		2.9	2.9	
5	13	100.0	84.6		7.7		
6	20	100.0	70.0		15.0		5.0
7	23	100.0	100.0				
8	57	100.0	89.5		3.5		
9	32	100.0	100.0				

( )

1	234	100.0	86.3	23.1	3.4	49.1	6.4
2	205	100.0	91.7	22.9	3.9	49.3	5.9
3							
4	11	100.0	36.4	27.3		81.8	18.2
5	1	100.0				100.0	
6	1	100.0	100.0	100.0			
7	1	100.0	100.0				
8							
9							
10	1	100.0		100.0		100.0	
11	14	100.0	57.1	14.3		21.4	7.1

( )

			( )	( )	( )	( )	( )
1	234	100.0	77.4	7.3	1.3		1.7
2	12	100.0	66.7	16.7			
3	43	100.0	74.4	7.0	2.3		
4	34	100.0	82.4	2.9			
5	13	100.0	69.2	15.4	7.7		
6	20	100.0	80.0	10.0			5.0
7	23	100.0	65.2	8.7			8.7
8	57	100.0	78.9	7.0	1.8		
9	32	100.0	87.5	3.1			3.1

0 4			0 4	6 0	1
			8 3		2
2 3				9 3	3
				8 8	4
				7 7	5
				10 0	6
					7
				7 0	8
					9

4 3	6 8	0 9		1
2 9	6 3			2
				3
9 1				4
100 0				5
				6
				7
				8
				9
				10
14 3	21. 4	14 3		11

(	)			
2 6	0 4	9 0	0 4	1
16 7				2
2 3		14 0		3
		14 7		4
		7 7		5
		5 0		6
13 0		4 3		7
		10 5	1. 8	8
	3 1	3 1		9

( )

1	234	100.0	39.7	23.1	9.0	10.3	5.1	
2	181	100.0	43.6	23.2	8.8	9.9	5.5	
3	17	100.0	29.4	23.5	11.8	11.8	11.8	
4	3	100.0	33.3			66.7		
5	4	100.0	50.0					
6								
7	6	100.0	16.7	33.3	16.7			
8	1	100.0				100.0		
9	21	100.0	23.8	28.6	9.5	4.8		
10	1	100.0						

( )

1	234	100.0	24.8	22.2	65.4	23.5	2.6	
2	12	100.0	25.0	25.0	58.3	50.0	8.3	
3	43	100.0	30.2	27.9	62.8	20.9	4.7	
4	34	100.0	20.6	32.4	52.9	23.5	2.9	
5	13	100.0	30.8	23.1	46.2	46.2		
6	20	100.0	15.0	20.0	80.0	20.0		
7	23	100.0	21.7	34.8	60.9	21.7		
8	57	100.0	24.6	15.8	73.7	14.0	3.5	
9	32	100.0	28.1	6.3	71.9	28.1		

22.2	9.4	30.3	44.9	6.0		1
22.1	8.8	29.3	45.3	3.3		2
17.6	17.6	29.4	29.4	17.6		3
33.3			33.3	33.3		4
25.0		75.0	25.0	25.0		5
						6
33.3	16.7	16.7	66.7			7
		100.0				8
23.8	9.5	33.3	52.4	14.3		9
		100.0	100.0			10

2.6	42.7	6.4	9.8		1
	16.7		16.7		2
2.3	37.2	2.3	11.6		3
2.9	41.2	11.8	11.8		4
	46.2		7.7		5
	30.0	15.0	20.0		6
13.0	43.5	4.3			7
1.8	45.6	10.5	10.5		8
	62.5		3.1		9

( )

1	234	39.7	22.2	17.5	43.2	23.1	20.1
2	12	33.3	16.7	16.7	58.3	33.3	25.0
3	43	51.2	30.2	20.9	51.2	27.9	23.3
4	34	38.2	20.6	17.6	35.3	8.8	26.5
5	13	69.2	46.2	23.1	53.8	38.5	15.4
6	20	35.0	30.0	5.0	45.0	30.0	15.0
7	23	30.4	17.4	13.0	34.8	17.4	17.4
8	57	31.6	14.0	17.5	42.1	24.6	17.5
9	32	40.6	18.8	21.9	37.5	18.8	18.8

( )

1	36.3	14.5	21.8	1
2	41.7	8.3	33.3	2
3	41.9	11.6	30.2	3
4	29.4	8.8	20.6	4
5	53.8	30.8	23.1	5
6	40.0	30.0	10.0	6
7	39.1	13.0	26.1	7
8	28.1	8.8	19.3	8
9	37.5	21.9	15.6	9



33.8	11.1	22.6	51.3	28.6	22.6	1
33.3	16.7	16.7	41.7	8.3	33.3	2
44.2	16.3	27.9	53.5	25.6	27.9	3
35.3	5.9	29.4	50.0	32.4	17.6	4
38.5	15.4	23.1	69.2	38.5	30.8	5
35.0	25.0	10.0	55.0	40.0	15.0	6
26.1	13.0	13.0	56.5	34.8	21.7	7
28.1	5.3	22.8	42.1	21.1	21.1	8
31.3	6.3	25.0	56.3	34.4	21.9	9

(1)

	1	234	100.0	37.2	23.5	39.3	1
20ha	2	16	100.0	18.8	43.8	37.5	2
20ha 50ha	3	58	100.0	39.7	36.2	24.1	3
50ha 100ha	4	85	100.0	30.6	21.2	48.2	4
100ha 500ha	5	70	100.0	45.7	11.4	42.9	5
500ha 1,000ha	6	5	100.0	60.0	20.0	20.0	6
1,000ha	7	-	-	-	-	-	7
	8	12	100.0	33.3	25.0	41.7	8
	9	43	100.0	41.9	11.6	46.5	9
	10	34	100.0	26.5	29.4	44.1	10
	11	13	100.0	53.8	23.1	23.1	11
	12	20	100.0	45.0	40.0	15.0	12
	13	23	100.0	30.4	34.8	34.8	13
	14	57	100.0	33.3	21.1	45.6	14
	15	32	100.0	43.8	18.8	37.5	15
	16	-	-	-	-	-	16

( )

	1	234	100.0	47.4	38.0	7.7	31.6
20ha	2	16	100.0	37.5	31.3	12.5	43.8
20ha 50ha	3	58	100.0	44.8	39.7	6.9	37.9
50ha 100ha	4	85	100.0	43.5	42.4	10.6	30.6
100ha 500ha	5	70	100.0	54.3	34.3	4.3	27.1
500ha 1,000ha	6	5	100.0	80.0	20.0	-	-
1,000ha	7	-	-	-	-	-	-
	8	12	100.0	8.3	58.3	8.3	41.7
	9	43	100.0	48.8	25.6	7.0	46.5
	10	34	100.0	41.2	38.2	8.8	26.5
	11	13	100.0	46.2	46.2	7.7	46.2
	12	20	100.0	40.0	40.0	15.0	40.0
	13	23	100.0	60.9	43.5	-	34.8
	14	57	100.0	50.9	42.1	8.8	28.1
	15	32	100.0	56.3	31.3	6.3	6.3
	16	-	-	-	-	-	-
	17						
	18	87	100.0	59.8	37.9	11.5	31.0
	19	55	100.0	36.4	40.0	7.3	29.1
	20	92	100.0	42.4	37.0	4.3	33.7
	21	234	100.0	37.2	17.9	1.7	6.8
	22	234	100.0	4.7	13.7	2.6	17.1
	23	234	100.0	5.6	6.4	3.4	7.7

43.6	32.5	25.2	6.8	55.1	4.7	0.4		1
37.5	18.8	18.8	25.0	56.3	-	-		2
46.6	37.9	24.1	1.7	50.0	3.4	-		3
44.7	35.3	20.0	5.9	55.3	2.4	1.2		4
40.0	27.1	32.9	8.6	60.0	8.6	-		5
60.0	40.0	40.0	-	40.0	20.0	-		6
-	-	-	-	-	-	-		7
25.0	16.7	50.0	33.3	41.7	-	-		8
32.6	37.2	27.9	9.3	60.5	2.3	-		9
58.8	35.3	14.7	2.9	61.8	2.9	2.9		10
38.5	23.1	15.4	7.7	46.2	7.7	-		11
45.0	35.0	30.0	5.0	40.0	5.0	-		12
30.4	30.4	30.4	13.0	43.5	8.7	-		13
38.6	29.8	22.8	3.5	57.9	5.3	-		14
68.8	37.5	25.0	-	62.5	6.3	-		15
-	-	-	-	-	-	-		16
39.1	28.7	27.6	4.6	50.6	5.7	-		17
54.5	36.4	27.3	10.9	52.7	-	-		18
41.3	33.7	21.7	6.5	60.9	6.5	1.1		19
11.1	8.1	3.0	-	12.4	1.3	0.4		20
19.7	13.7	10.7	2.6	13.2	-	2.1		21
12.8	10.7	11.5	4.3	29.5	3.4	4.7		22
								23

( )

	1	234	100.0	18.8	45.3
20ha	2	16	100.0	31.3	37.5
20ha 50ha	3	58	100.0	17.2	41.4
50ha 100ha	4	85	100.0	21.2	42.4
100ha 500ha	5	70	100.0	14.3	51.4
500ha 1,000ha	6	5	100.0	20.0	80.0
1,000ha	7	-	-	-	-
	8	12	100.0	16.7	66.7
	9	43	100.0	20.9	48.8
	10	34	100.0	23.5	44.1
	11	13	100.0	15.4	38.5
	12	20	100.0	5.0	65.0
	13	23	100.0	17.4	39.1
	14	57	100.0	19.3	35.1
	15	32	100.0	21.9	46.9
	16	-	-	-	-
	17	87	100.0	24.1	50.6
	18	55	100.0	16.4	40.0
	19	92	100.0	15.2	43.5

( )

(

	1	83	100.0	92.8	37.3
20ha	2	5	100.0	40.0	60.0
20ha 50ha	3	24	100.0	95.8	54.2
50ha 100ha	4	31	100.0	96.8	25.8
100ha 500ha	5	23	100.0	95.7	30.4
500ha 1,000ha	6	-	-	-	-
1,000ha	7	-	-	-	-
	8	2	100.0	50.0	-
	9	13	100.0	100.0	30.8
	10	11	100.0	100.0	45.5
	11	6	100.0	83.3	16.7
	12	6	100.0	100.0	50.0
	13	10	100.0	80.0	50.0
	14	25	100.0	92.0	44.0
	15	10	100.0	100.0	20.0
	16	-	-	-	-
	17	22	100.0	95.5	31.8
	18	24	100.0	87.5	45.8
	19	37	100.0	94.6	35.1

(3)

29.5	6.0	0.4		1
25.0	6.3	-		2
36.2	5.2	-		3
29.4	7.1	-		4
27.1	5.7	1.4		5
-	-	-		6
-	-	-		7
16.7	-	-		8
25.6	4.7	-		9
26.5	5.9	-		10
30.8	15.4	-		11
25.0	5.0	-		12
30.4	13.0	-		13
38.6	5.3	1.8		14
28.1	3.1	-		15
-	-	-		16
21.8	3.4	-		17
38.2	5.5	-		18
31.5	8.7	1.1		19

15.7	39.8	3.6	4.8		1
60.0	20.0	-	20.0		2
16.7	25.0	-	4.2		3
9.7	48.4	6.5	3.2		4
13.0	47.8	4.3	4.3		5
-	-	-	-		6
-	-	-	-		7
100.0	50.0	-	-		8
-	69.2	-	-		9
-	54.5	-	-		10
16.7	33.3	33.3	-		11
16.7	16.7	-	-		12
10.0	50.0	-	10.0		13
16.0	32.0	4.0	4.0		14
40.0	10.0	-	20.0		15
-	-	-	-		16
22.7	45.5	-	-		17
12.5	37.5	4.2	4.2		18
13.5	37.8	5.4	8.1		19

( )

	1	83	100.0	61.4	10.8
20ha	2	5	100.0	60.0	20.0
20ha 50ha	3	24	100.0	58.3	4.2
50ha 100ha	4	31	100.0	77.4	12.9
100ha 500ha	5	23	100.0	43.5	13.0
500ha 1,000ha	6	-	-	-	-
1,000ha	7	-	-	-	-
	8	2	100.0	-	-
	9	13	100.0	69.2	7.7
	10	11	100.0	81.8	27.3
	11	6	100.0	83.3	16.7
	12	6	100.0	-	-
	13	10	100.0	80.0	20.0
	14	25	100.0	56.0	8.0
	15	10	100.0	60.0	-
	16	-	-	-	-
	17	22	100.0	63.6	4.5
	18	24	100.0	66.7	20.8
	19	37	100.0	56.8	8.1

(3)

( )

	1	234	100.0	25.6	49.6
20ha	2	16	100.0	25.0	62.5
20ha 50ha	3	58	100.0	31.0	51.7
50ha 100ha	4	85	100.0	25.9	44.7
100ha 500ha	5	70	100.0	20.0	51.4
500ha 1,000ha	6	5	100.0	40.0	40.0
1,000ha	7	-	-	-	-
	8	12	100.0	25.0	50.0
	9	43	100.0	27.9	53.5
	10	34	100.0	23.5	41.2
	11	13	100.0	38.5	46.2
	12	20	100.0	25.0	45.0
	13	23	100.0	17.4	43.5
	14	57	100.0	21.1	59.6
	15	32	100.0	34.4	43.8
	16	-	-	-	-
	17	87	100.0	26.4	50.6
	18	55	100.0	27.3	47.3
	19	92	100.0	23.9	50.0

	53.0	9.6	33.7	15.7	1
	80.0	20.0	-	-	2
	62.5	16.7	41.7	4.2	3
	41.9	3.2	29.0	19.4	4
	52.2	8.7	39.1	26.1	5
	-	-	-	-	6
	-	-	-	-	7
	100.0	50.0	50.0	-	8
	69.2	-	38.5	7.7	9
	36.4	-	45.5	9.1	10
	16.7	16.7	50.0	-	11
	50.0	16.7	-	50.0	12
	50.0	10.0	20.0	10.0	13
	60.0	16.0	32.0	16.0	14
	50.0	-	40.0	30.0	15
	-	-	-	-	16
	63.6	18.2	31.8	9.1	17
	50.0	4.2	33.3	12.5	18
	48.6	8.1	35.1	21.6	19

CSR					
	3.4	10.3	8.5	2.6	1
	-	12.5	-	-	2
	1.7	10.3	1.7	3.4	3
	5.9	12.9	8.2	2.4	4
	2.9	7.1	15.7	2.9	5
	-	-	20.0	-	6
	-	-	-	-	7
	-	16.7	8.3	-	8
	2.3	7.0	7.0	2.3	9
	2.9	23.5	5.9	2.9	10
	-	7.7	7.7	-	11
	10.0	-	20.0	-	12
	8.7	17.4	8.7	4.3	13
	3.5	7.0	5.3	3.5	14
	-	6.3	12.5	3.1	15
	-	-	-	-	16
	1.1	8.0	11.5	2.3	17
	7.3	12.7	1.8	3.6	18
	3.3	10.9	9.8	2.2	19

( )

	1	234	100.0	11.5	74.8
20ha	2	16	100.0	6.3	81.3
20ha 50ha	3	58	100.0	10.3	75.9
50ha 100ha	4	85	100.0	9.4	74.1
100ha 500ha	5	70	100.0	14.3	74.3
500ha 1,000ha	6	5	100.0	40.0	60.0
1,000ha	7	-	-	-	-
	8	12	100.0	25.0	66.7
	9	43	100.0	9.3	76.7
	10	34	100.0	8.8	73.5
	11	13	100.0	7.7	84.6
	12	20	100.0	10.0	85.0
	13	23	100.0	8.7	65.2
	14	57	100.0	12.3	73.7
	15	32	100.0	15.6	75.0
	16	-	-	-	-

			20ha	20ha 50ha
	1	27	100.0	- 11.1
20ha	2	1	100.0	- 100.0
20ha 50ha	3	6	100.0	- 33.3
50ha 100ha	4	8	100.0	- -
100ha 500ha	5	10	100.0	- -
500ha 1,000ha	6	2	100.0	- -
1,000ha	7	-	-	- -

(7)

			20ha	20ha 50ha
	1	14	100.0	50.0 35.7
20ha	2	-	100.0	- -
20ha 50ha	3	4	100.0	75.0 25.0
50ha 100ha	4	7	100.0	42.9 42.9
100ha 500ha	5	3	100.0	33.3 33.3
500ha 1,000ha	6	-	-	- -
1,000ha	7	-	-	- -

(7)



	6.0	5.6	2.1	1
	-	12.5	-	2
	6.9	5.2	1.7	3
	8.2	5.9	2.4	4
	4.3	4.3	2.9	5
	-	-	-	6
	-	-	-	7
	-	-	8.3	8
	7.0	4.7	2.3	9
	8.8	2.9	5.9	10
	7.7	-	-	11
	-	5.0	-	12
	13.0	13.0	-	13
	5.3	7.0	1.8	14
	3.1	6.3	-	15
	-	-	-	16

50ha	100ha	100ha	500ha	500ha	1,000ha	1,000ha		
	11.1		48.1		11.1	14.8	3.7	1
	-		-		-	-	-	2
	16.7		33.3		-	16.7	-	3
	25.0		75.0		-	-	-	4
	-		50.0		30.0	10.0	10.0	5
	-		-		-	100.0	-	6
	-		-		-	-	-	7

50ha	100ha	100ha	500ha	500ha	1,000ha	1,000ha	
	14.3		-		-	-	1
	-		-		-	-	2
	-		-		-	-	3
	14.3		-		-	-	4
	33.3		-		-	-	5
	-		-		-	-	6
	-		-		-	-	7

	1	216	100.0	43.5	12.0	20.4
20ha	2	14	100.0	71.4	14.3	-
20ha 50ha	3	54	100.0	40.7	9.3	25.9
50ha 100ha	4	78	100.0	46.2	14.1	20.5
100ha 500ha	5	65	100.0	40.0	10.8	18.5
500ha 1,000ha	6	5	100.0	-	20.0	40.0
1,000ha	7	-	-	-	-	-
	8	11	100.0	9.1	9.1	18.2
	9	40	100.0	40.0	12.5	27.5
	10	31	100.0	41.9	12.9	25.8
	11	13	100.0	61.5	15.4	-
	12	19	100.0	42.1	5.3	15.8
	13	20	100.0	30.0	10.0	30.0
	14	52	100.0	38.5	15.4	19.2
	15	30	100.0	73.3	10.0	13.3
	16	-	-	-	-	-
	17	85	100.0	47.1	16.5	15.3
	18	47	100.0	38.3	8.5	19.1
	19	84	100.0	42.9	9.5	26.2
	20	27	100.0	44.4	33.3	11.1
	21	175	100.0	44.0	8.6	22.3
	22	14	100.0	35.7	14.3	14.3

(7)

	1	216	100.0	20.4	47.7	21.8
20ha	2	14	100.0	35.7	50.0	7.1
20ha 50ha	3	54	100.0	29.6	48.1	16.7
50ha 100ha	4	78	100.0	16.7	48.7	21.8
100ha 500ha	5	65	100.0	12.3	47.7	30.8
500ha 1,000ha	6	5	100.0	40.0	20.0	-
1,000ha	7	-	-	-	-	-
	8	11	100.0	45.5	27.3	27.3
	9	40	100.0	12.5	52.5	17.5
	10	31	100.0	22.6	38.7	32.3
	11	13	100.0	30.8	30.8	23.1
	12	19	100.0	21.1	36.8	36.8
	13	20	100.0	15.0	55.0	15.0
	14	52	100.0	21.2	50.0	21.2
	15	30	100.0	16.7	63.3	10.0
	16	-	-	-	-	-
	17	85	100.0	14.1	54.1	23.5
	18	47	100.0	34.0	40.4	12.8
	19	84	100.0	19.0	45.2	25.0
	20	27	100.0	18.5	51.9	22.2
	21	175	100.0	19.4	49.7	21.7
	22	14	100.0	35.7	14.3	21.4

(7)

21.3	2.8	1	
14.3	-	2	
22.2	1.9	3	
19.2	-	4	
24.6	6.2	5	
20.0	20.0	6	
-	-	7	
63.6	-	8	
20.0	-	9	
19.4	-	10	
15.4	7.7	11	
21.1	15.8	12	
25.0	5.0	13	
25.0	1.9	14	
3.3	-	15	
-	-	16	
17.6	3.5	17	
29.8	4.3	18	
20.2	1.2	19	
7.4	3.7	20	
22.3	2.9	21	
35.7	-	22	

6.5	3.2	0.5	1	
-	7.1	-	2	
3.7	1.9	-	3	
7.7	3.8	1.3	4	
7.7	1.5	-	5	
20.0	20.0	-	6	
-	-	-	7	
-	-	-	8	
17.5	-	-	9	
6.5	-	-	10	
-	15.4	-	11	
-	5.3	-	12	
10.0	5.0	-	13	
3.8	3.8	-	14	
3.3	3.3	3.3	15	
-	-	-	16	
5.9	1.2	1.2	17	
6.4	6.4	-	18	
7.1	3.6	-	19	
7.4	-	-	20	
6.3	2.3	0.6	21	
7.1	21.4	-	22	

			50	80		
	1	216	100.0	12.0	23.1	59.3
20ha	2	14	100.0	21.4	35.7	35.7
20ha 50ha	3	54	100.0	20.4	18.5	57.4
50ha 100ha	4	78	100.0	9.0	16.7	69.2
100ha 500ha	5	65	100.0	7.7	29.2	55.4
500ha 1,000ha	6	5	100.0	-	60.0	40.0
1,000ha	7	-	-	-	-	-
	8	11	100.0	36.4	27.3	36.4
	9	40	100.0	12.5	25.0	62.5
	10	31	100.0	3.2	32.3	61.3
	11	13	100.0	-	15.4	69.2
	12	19	100.0	10.5	21.1	68.4
	13	20	100.0	5.0	25.0	70.0
	14	52	100.0	15.4	25.0	48.1
	15	30	100.0	16.7	10.0	63.3
	16	-	-	-	-	-
	17	85	100.0	8.2	20.0	65.9
	18	47	100.0	21.3	29.8	44.7
	19	84	100.0	10.7	22.6	60.7
	20	27	100.0	11.1	14.8	66.7
	21	175	100.0	12.0	23.4	60.0
	22	14	100.0	14.3	35.7	35.7

(7)

			0.45)	(0.25)		
	1	216	100.0	8.3	25.0	1.9
20ha	2	14	100.0	-	35.7	-
20ha 50ha	3	54	100.0	7.4	22.2	3.7
50ha 100ha	4	78	100.0	7.7	24.4	2.6
100ha 500ha	5	65	100.0	12.3	27.7	-
500ha 1,000ha	6	5	100.0	-	-	-
1,000ha	7	-	-	-	-	-
	8	11	100.0	18.2	18.2	-
	9	40	100.0	7.5	15.0	-
	10	31	100.0	6.5	29.0	-
	11	13	100.0	7.7	-	7.7
	12	19	100.0	10.5	26.3	5.3
	13	20	100.0	-	20.0	-
	14	52	100.0	11.5	32.7	-
	15	30	100.0	6.7	36.7	6.7
	16	-	-	-	-	-
	17	85	100.0	8.2	29.4	2.4
	18	47	100.0	6.4	25.5	-
	19	84	100.0	9.5	20.2	2.4
	20	27	100.0	22.2	44.4	-
	21	175	100.0	6.9	22.3	2.3
	22	14	100.0	-	21.4	-

(7)

4.6	0.9	1
-	7.1	2
3.7	-	3
3.8	1.3	4
7.7	-	5
-	-	6
-	-	7
-	-	8
-	-	9
3.2	-	10
15.4	-	11
-	-	12
-	-	13
11.5	-	14
3.3	6.7	15
-	-	16
3.5	2.4	17
4.3	-	18
6.0	-	19
7.4	-	20
3.4	1.1	21
14.3	-	22

46.8	7.4	9.7	0.9	1
57.1	-	7.1	-	2
50.0	7.4	7.4	1.9	3
47.4	9.0	7.7	1.3	4
40.0	6.2	13.8	-	5
60.0	20.0	20.0	-	6
-	-	-	-	7
45.5	18.2	-	-	8
70.0	2.5	5.0	-	9
51.6	3.2	9.7	-	10
30.8	15.4	38.5	-	11
31.6	15.8	10.5	-	12
70.0	5.0	5.0	-	13
38.5	5.8	9.6	1.9	14
26.7	10.0	10.0	3.3	15
-	-	-	-	16
37.6	8.2	11.8	2.4	17
51.1	6.4	10.6	-	18
53.6	7.1	7.1	-	19
18.5	11.1	3.7	-	20
50.3	6.3	10.9	1.1	21
57.1	14.3	7.1	-	22

			100m <sup>2</sup> /ha	50 100m <sup>2</sup> /ha	30 50m <sup>2</sup> /ha	
	1	216	100.0	25.5	29.6	11.6
20ha	2	14	100.0	21.4	21.4	7.1
20ha 50ha	3	54	100.0	20.4	25.9	14.8
50ha 100ha	4	78	100.0	19.2	35.9	10.3
100ha 500ha	5	65	100.0	38.5	26.2	10.8
500ha 1,000ha	6	5	100.0	20.0	40.0	20.0
1,000ha	7	-	-	-	-	-
	8	11	100.0	18.2	36.4	27.3
	9	40	100.0	30.0	35.0	-
	10	31	100.0	16.1	32.3	16.1
	11	13	100.0	15.4	7.7	7.7
	12	19	100.0	21.1	15.8	21.1
	13	20	100.0	10.0	45.0	25.0
	14	52	100.0	36.5	26.9	7.7
	15	30	100.0	30.0	30.0	10.0
	16	-	-	-	-	-
	17	85	100.0	35.3	25.9	8.2
	18	47	100.0	12.8	29.8	19.1
	19	84	100.0	22.6	33.3	10.7
	20	27	100.0	33.3	29.6	25.9
	21	175	100.0	25.1	29.7	9.7
	22	14	100.0	14.3	28.6	7.1

(7)

( )

	1	234	100.0	29.1	22.2	29.5
20ha	2	16	100.0	12.5	25.0	43.8
20ha 50ha	3	58	100.0	29.3	25.9	31.0
50ha 100ha	4	85	100.0	29.4	24.7	30.6
100ha 500ha	5	70	100.0	31.4	15.7	22.9
500ha 1,000ha	6	5	100.0	40.0	20.0	40.0
1,000ha	7	-	-	-	-	-
	8	12	100.0	8.3	33.3	50.0
	9	43	100.0	32.6	27.9	18.6
	10	34	100.0	38.2	11.8	32.4
	11	13	100.0	38.5	7.7	30.8
	12	20	100.0	30.0	30.0	25.0
	13	23	100.0	26.1	21.7	34.8
	14	57	100.0	26.3	24.6	26.3
	15	32	100.0	25.0	18.8	37.5
	16	-	-	-	-	-
	17	87	100.0	34.5	20.7	26.4
	18	55	100.0	18.2	25.5	30.9
	19	92	100.0	30.4	21.7	31.5
	20	27	100.0	18.5	29.6	22.2
	21	175	100.0	33.1	21.1	31.4
	22	14	100.0	28.6	28.6	21.4
	23	13	100.0	--	15.4	23.1
	24	5	100.0	20.0	20.0	40.0

22.7	10.6	1
42.9	7.1	2
27.8	11.1	3
21.8	12.8	4
15.4	9.2	5
20.0	-	6
-	-	7
18.2	-	8
35.0	-	9
16.1	19.4	10
46.2	23.1	11
26.3	15.8	12
10.0	10.0	13
17.3	11.5	14
20.0	10.0	15
-	-	16
18.8	11.8	17
27.7	10.6	18
23.8	9.5	19
-	11.1	20
25.1	10.3	21
35.7	14.3	22

7.3	10.3	1.7	1
-	6.3	12.5	2
3.4	10.3	-	3
8.2	7.1	-	4
11.4	15.7	2.9	5
-	-	-	6
-	-	-	7
8.3	-	-	8
-	18.6	2.3	9
2.9	8.8	5.9	10
7.7	15.4	-	11
5.0	10.0	-	12
8.7	4.3	4.3	13
10.5	12.3	-	14
15.6	3.1	-	15
-	-	-	16
9.2	8.0	1.1	17
5.5	16.4	3.6	18
6.5	8.7	1.1	19
14.8	14.8	-	20
5.1	8.0	1.1	21
14.3	7.1	-	22
15.4	38.5	7.7	23
--	--	20.0	24

( )

	1	234	100.0	63.2	16.2
20ha	2	16	100.0	68.8	18.8
20ha 50ha	3	58	100.0	72.4	10.3
50ha 100ha	4	85	100.0	56.5	20.0
100ha 500ha	5	70	100.0	64.3	17.1
500ha 1,000ha	6	5	100.0	40.0	-
1,000ha	7	-	-	-	-
	8	12	100.0	33.3	16.7
	9	43	100.0	53.5	20.9
	10	34	100.0	67.6	5.9
	11	13	100.0	53.8	15.4
	12	20	100.0	70.0	10.0
	13	23	100.0	56.5	4.3
	14	57	100.0	73.7	17.5
	15	32	100.0	68.8	31.3
	16	-	-	-	-
	17	87	100.0	71.3	12.6
	18	55	100.0	54.5	12.7
	19	92	100.0	60.9	21.7
	20	27	100.0	48.1	33.3
	21	175	100.0	66.9	13.7
	22	14	100.0	57.1	21.4
	23	13	100.0	53.8	15.4
	24	5	100.0	60.0	--



Q2						
	27.4	21.4	55.6	5.6	1.3	1
	31.3	12.5	43.8	-	12.5	2
	25.9	31.0	50.0	3.4	-	3
	29.4	20.0	57.6	5.9	-	4
	27.1	17.1	58.6	5.7	1.4	5
	-	20.0	80.0	40.0	-	6
	-	-	-	-	-	7
	66.7	8.3	58.3	-	-	8
	30.2	34.9	58.1	-	-	9
	17.6	20.6	61.8	2.9	5.9	10
	46.2	30.8	46.2	7.7	-	11
	30.0	10.0	70.0	5.0	-	12
	13.0	26.1	73.9	13.0	4.3	13
	26.3	14.0	47.4	8.8	-	14
	21.9	21.9	40.6	6.3	-	15
	-	-	-	-	-	16
	25.3	18.4	57.5	6.9	-	17
	34.5	20.0	58.2	3.6	3.6	18
	25.0	25.0	52.2	5.4	1.1	19
	22.2	25.9	55.6	7.4	-	20
	28.6	18.9	58.3	4.0	0.6	21
	7.1	42.9	42.9	21.4	-	22
	38.5	23.1	38.5	7.7	7.7	23
	40.0	20.0	40.0	--	20.0	24

( )

1	248	100.0	28.2	8.5	40.7	8.5	5.2
2	8	100.0	25.0		75.0		
3	21	100.0	52.4	4.8	33.3		
4	73	100.0	27.4	5.5	45.2	9.6	4.1
5	17	100.0	17.6		58.8	5.9	11.8
6	26	100.0	34.6	15.4	23.1	11.5	7.7
7	43	100.0	20.9	20.9	30.2	11.6	7.0
8	27	100.0	18.5	3.7	37.0	18.5	7.4
9	31	100.0	35.5	6.5	48.4		
10	2	100.0			50.0		50.0

( )

1	248	100.0	69.8	39.9	13.7	21.8	25.8
2	70	100.0	71.4	37.1	20.0	22.9	27.1
3	21	100.0	47.6	42.9	4.8	23.8	42.9
4	101	100.0	76.2	39.6	10.9	23.8	22.8
5	21	100.0	61.9	52.4	9.5	23.8	28.6
6	13	100.0	53.8	30.8	7.7	15.4	23.1
7	5	100.0	100.0		60.0		20.0
8							
9							
10							
11	17	100.0	64.7	52.9	11.8	11.8	17.6

( )

			( )	( )	( )	( )	( )
1	248	100.0	78.2	7.3	0.4	2.0	0.4
2	70	100.0	82.9	4.3		1.4	
3	21	100.0	76.2	14.3			
4	101	100.0	75.2	8.9	1.0	3.0	
5	21	100.0	90.5				
6	13	100.0	84.6	7.7			
7	5	100.0	80.0	20.0			
8							
9							
10							
11	17	100.0	58.8	5.9		5.9	5.9

2.0			6.9		1
					2
			9.5		3
1.4			6.8		4
			5.9		5
			7.7		6
			9.3		7
11.1			3.7		8
3.2			6.5		9
					10

11.7	6.9	1
8.6	4.3	2
23.8		3
8.9	7.9	4
19.0	4.8	5
30.8	15.4	6
		7
		8
		9
		10
5.9	17.6	11

( )	( )		
2.0	0.8	8.9	1
4.3		7.1	2
		9.5	3
2.0	2.0	7.9	4
		9.5	5
		7.7	6
			7
			8
			9
			10
		23.5	11

( )

1	248	100.0	41.5	23.0	11.7	8.9	6.5
2	194	100.0	44.3	23.2	11.3	8.2	7.7
3	18	100.0	44.4	22.2	11.1	11.1	5.6
4	1	100.0					
5	5	100.0	40.0	20.0	20.0		
6	1	100.0	100.0				
7	5	100.0	40.0	20.0		20.0	
8	2	100.0	50.0				
9	22	100.0	13.6	27.3	18.2	13.6	

( )

1	248	100.0	18.5	22.6	72.6	20.2	4.8
2	70	100.0	18.6	25.7	65.7	24.3	5.7
3	21	100.0	23.8	23.8	71.4	19.0	
4	101	100.0	18.8	18.8	80.2	15.8	5.9
5	21	100.0	19.0	28.6	61.9	23.8	4.8
6	13	100.0	15.4	23.1	61.5	38.5	
7	5	100.0	20.0	40.0	60.0		20.0
8							
9							
10							
11	17	100.0	11.8	17.6	82.4	17.6	

23.8	8.1	28.6	42.3	1.2	1
24.7	7.7	27.3	41.2	0.5	2
22.2	5.6	33.3	38.9		3
100.0	100.0				4
20.0		60.0	40.0		5
		100.0			6
	20.0	40.0	60.0		7
		100.0	50.0		8
22.7	9.1	18.2	54.5	9.1	9

3.2	45.2	7.3	1
5.7	44.3	7.1	2
4.8	42.9		3
1.0	48.5	6.9	4
4.8	42.9	9.5	5
7.7	15.4	23.1	6
	40.0		7
			8
			9
			10
	58.8	5.9	11

( )

1	248	58.9	33.5	25.4	52.4	29.4	23.0
2	70	52.9	32.9	20.0	51.4	30.0	21.4
3	21	57.1	23.8	33.3	47.6	38.1	9.5
4	101	66.3	37.6	28.7	51.5	29.7	21.8
5	21	42.9	28.6	14.3	47.6	28.6	19.0
6	13	69.2	30.8	38.5	53.8	15.4	38.5
7	5	100.0	20.0	80.0	100.0	20.0	80.0
8							
9							
10							
11	17	41.2	35.3	5.9	58.8	29.4	29.4

( )

1	71.0	56.9	14.1	1
2	65.7	48.6	17.1	2
3	71.4	57.1	14.3	3
4	71.3	65.3	5.9	4
5	71.4	52.4	19.0	5
6	69.2	38.5	30.8	6
7	100.0	60.0	40.0	7
8				8
9				9
10				10
11	82.4	58.8	23.5	11

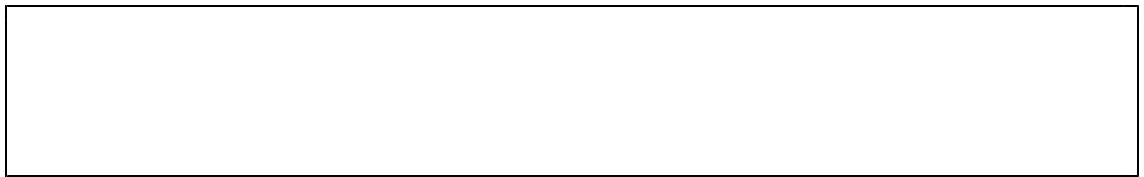
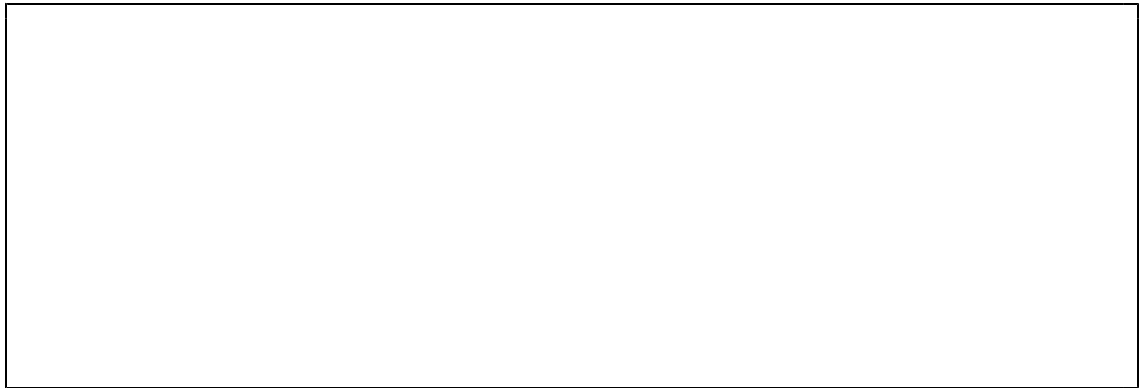
52.8	24.2	28.6	59.3	39.1	20.2	1
45.7	18.6	27.1	60.0	47.1	12.9	2
38.1	19.0	19.0	38.1	19.0	19.0	3
58.4	31.7	26.7	62.4	39.6	22.8	4
42.9	14.3	28.6	57.1	23.8	33.3	5
61.5	23.1	38.5	61.5	30.8	30.8	6
100.0		100.0	100.0	60.0	40.0	7
						8
						9
						10
58.8	29.4	29.4	52.9	47.1	5.9	11



20	29		20	29
30	39		30	39
40	49		40	49
50	64		50	64
65		10	65	

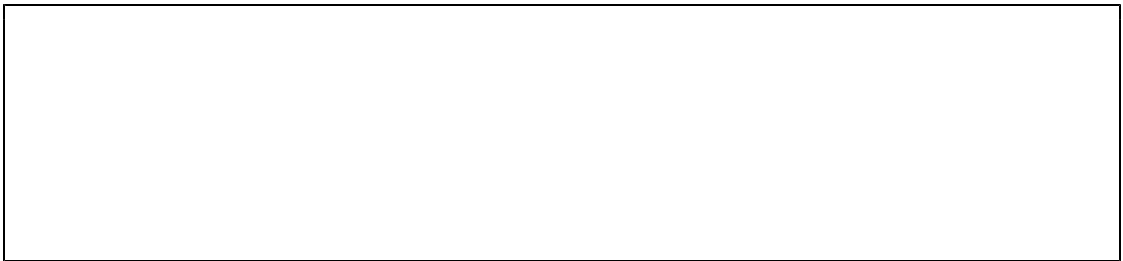
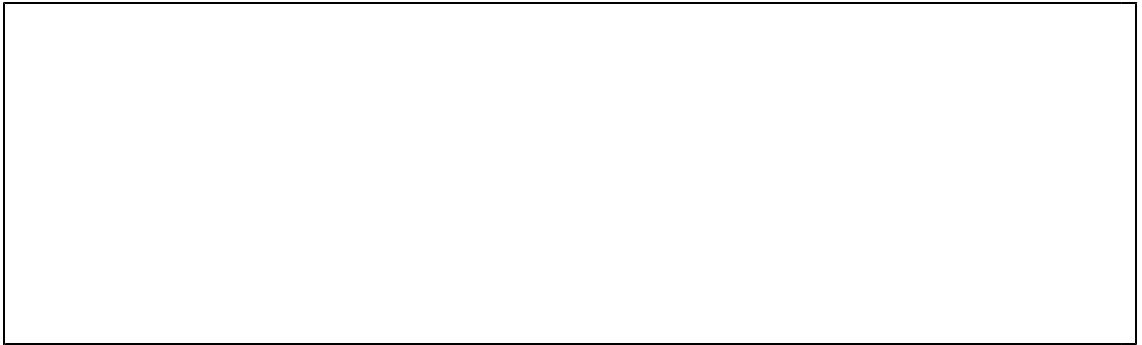
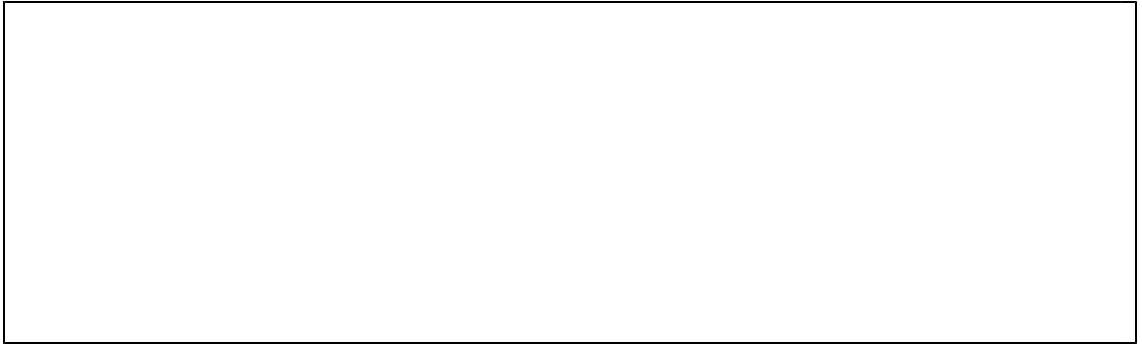






1







1. 3.9

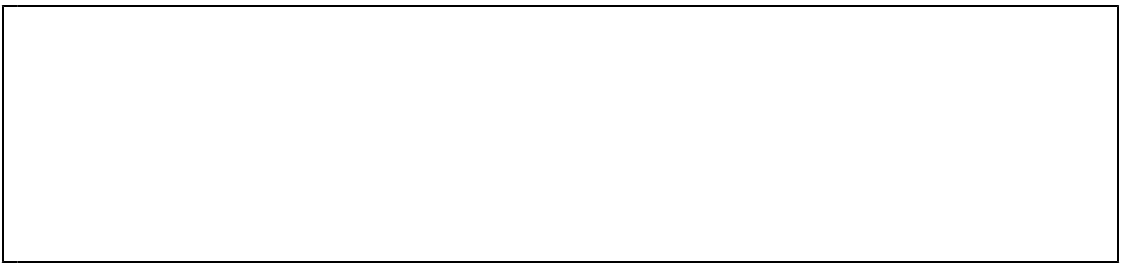


2

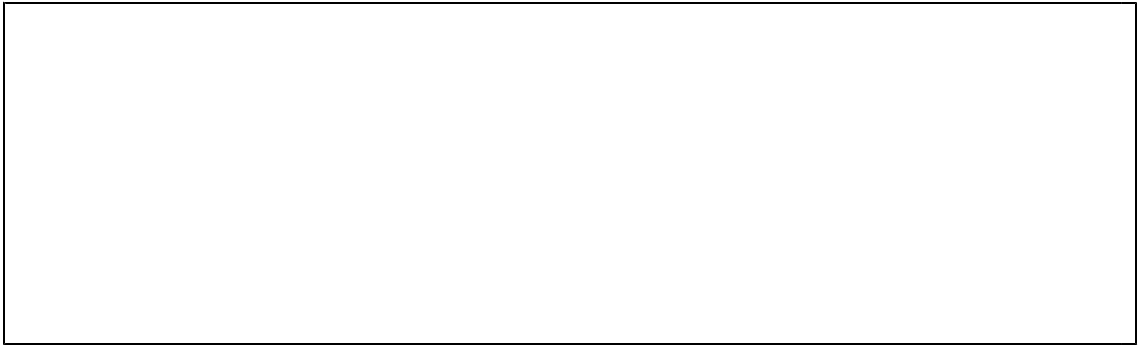
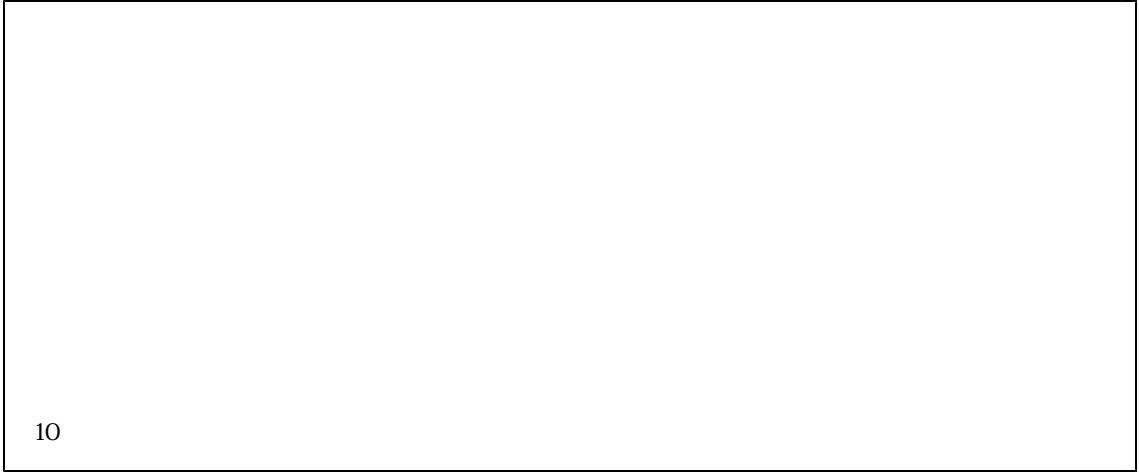
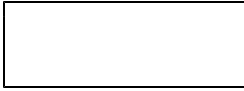


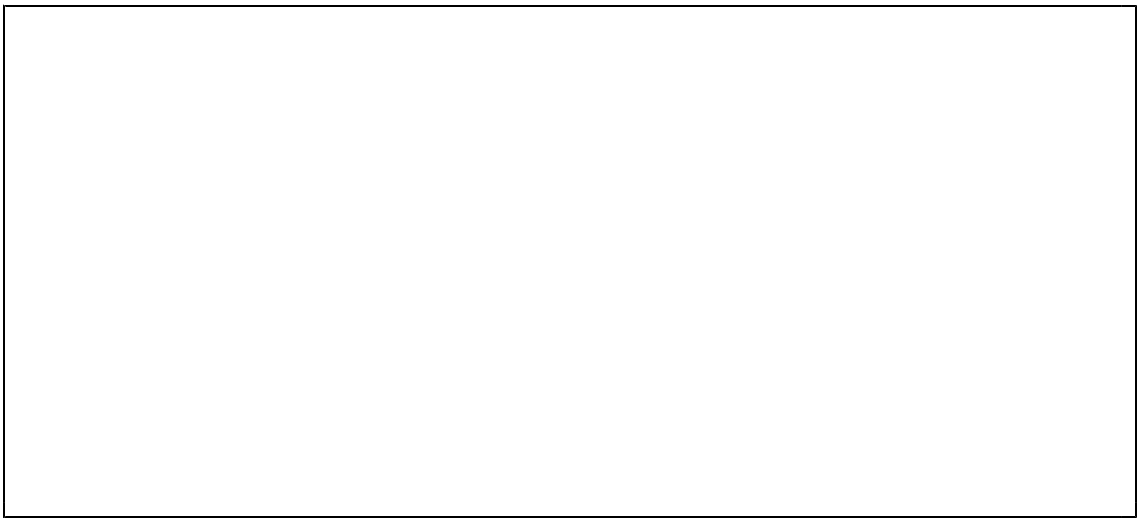
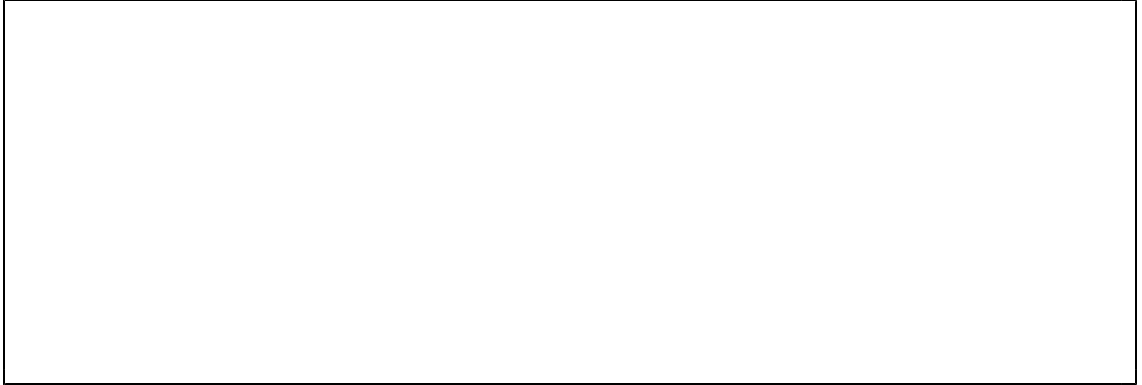
3

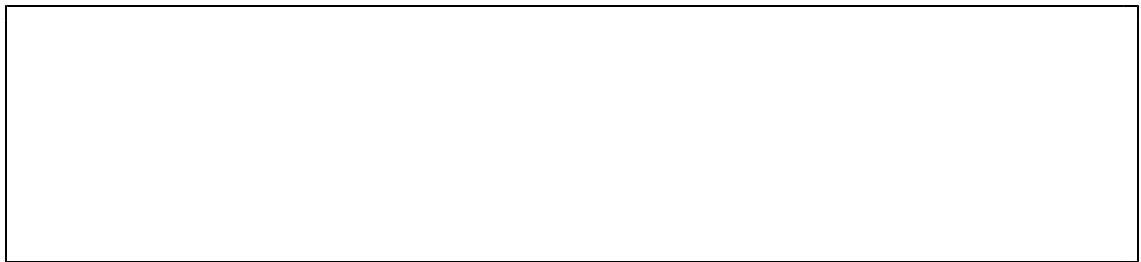
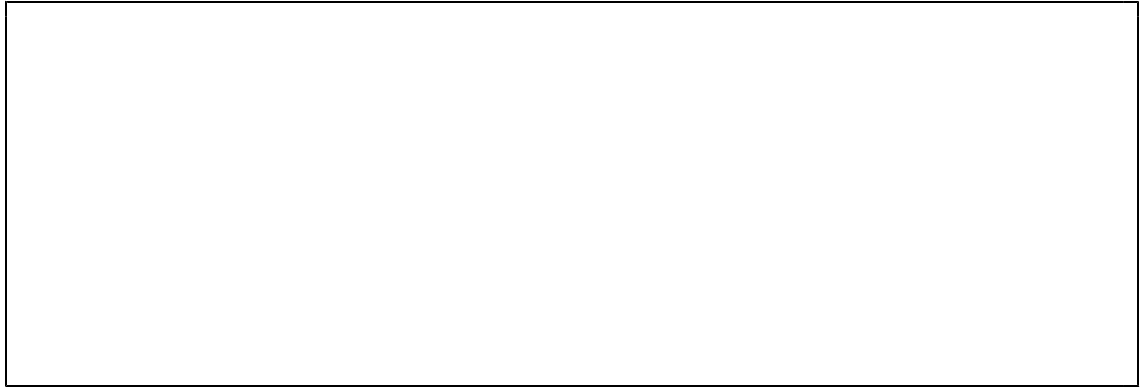
PR



Ω







1. 3.9



2



3



PR

)

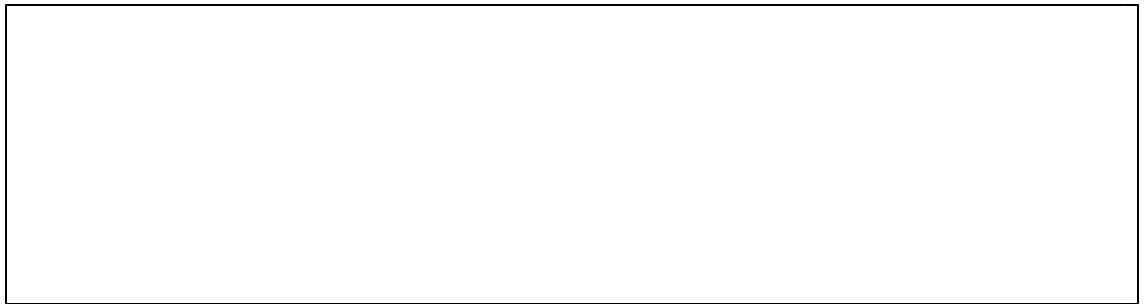
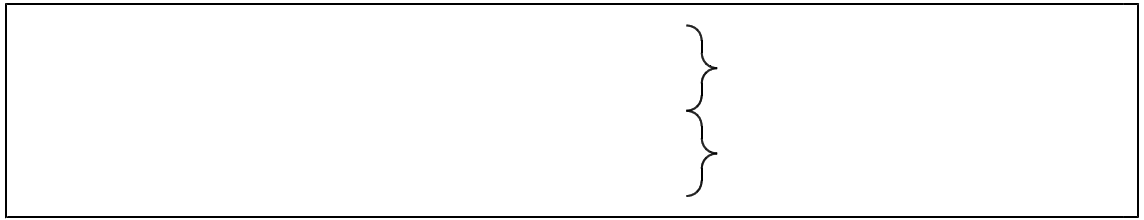
20ha		100ha	500ha
20ha	50ha	500ha	1,000ha
50ha	100ha	1,000ha	

)

--

--

10



CSR

(1) (7)

(1)

(2) \_\_\_\_\_  
(3) \_\_\_\_\_  
(2) \_\_\_\_\_  
\_\_\_\_\_

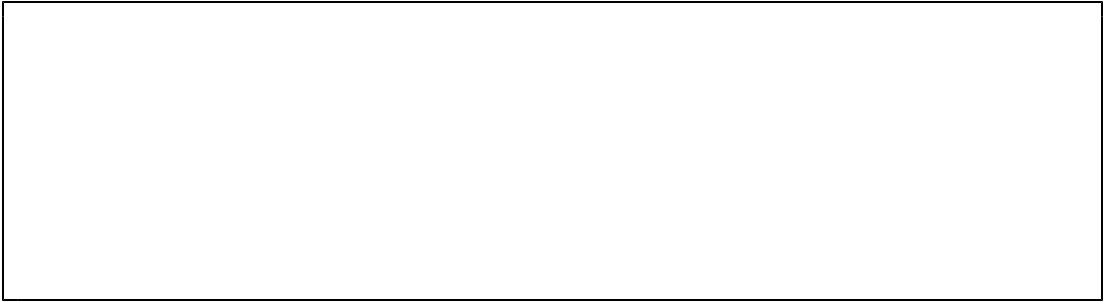
(1)

(2)

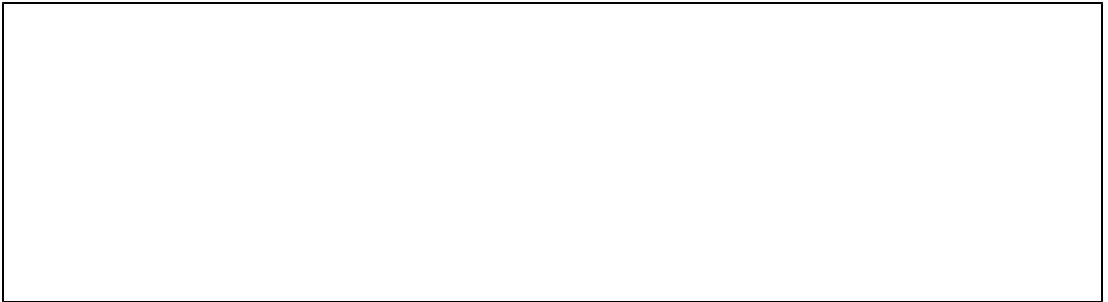
20ha  
20ha 50ha  
50ha 100ha  
100ha 500ha  
500ha 1,000ha  
1,000ha

(1)

(3)



(4)



(5)



(6)

0.25

0.45

0.45	12 13t	2.5m	7 8m
0.25	6 7t	2.2m	6m

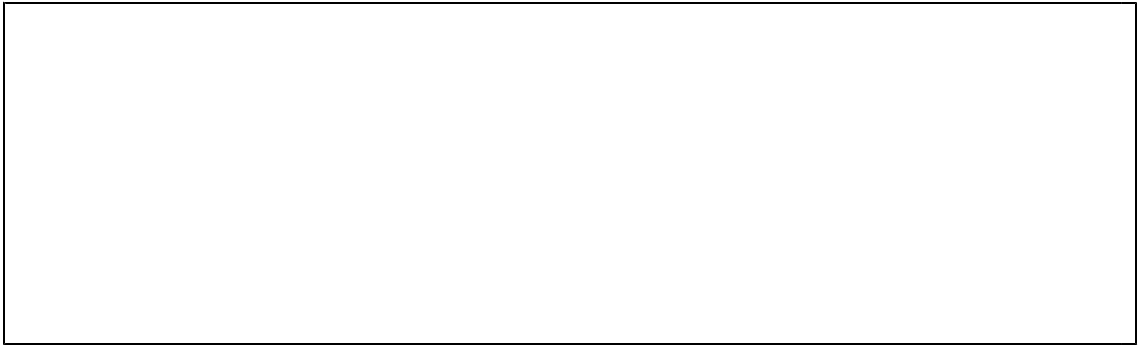
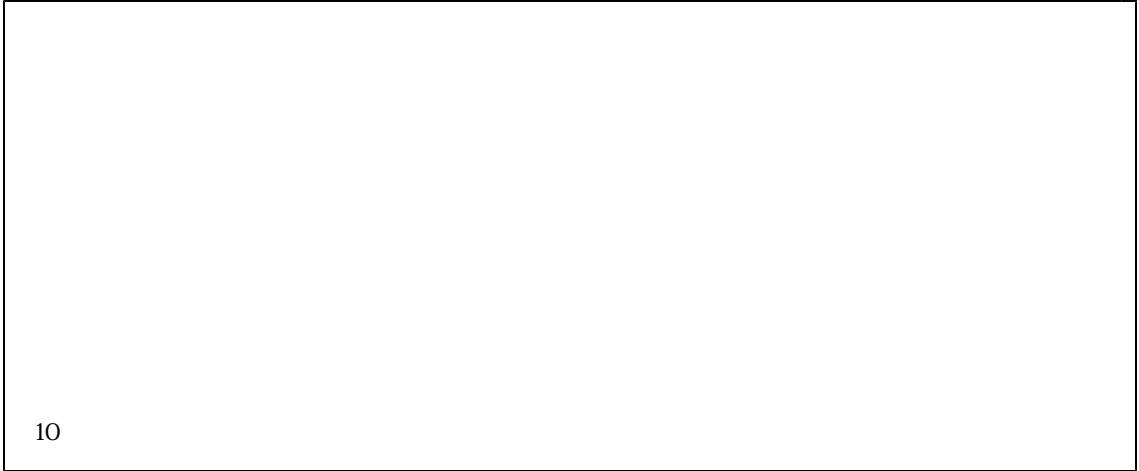
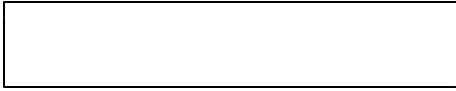
0.45)  
(0.25)

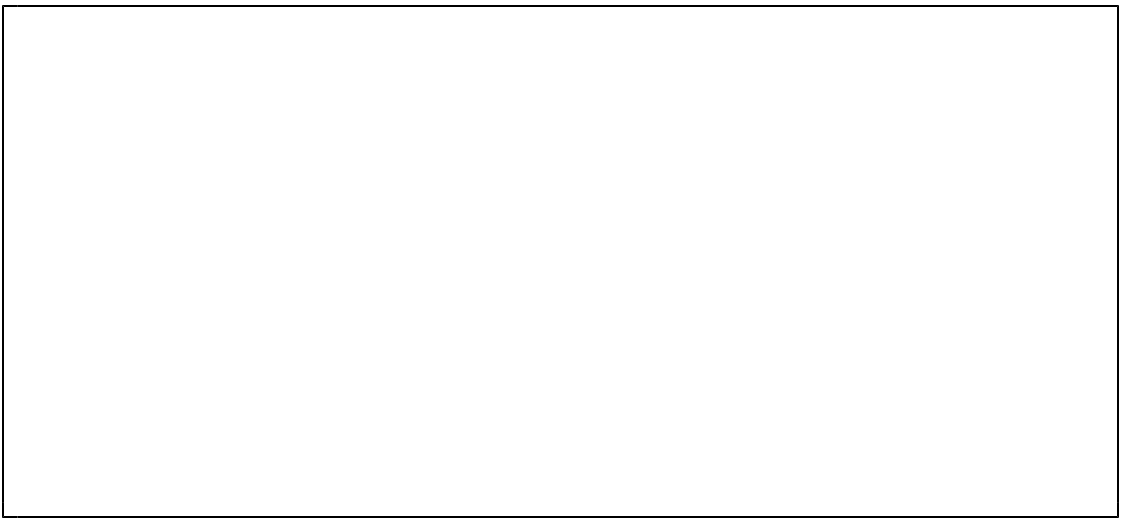
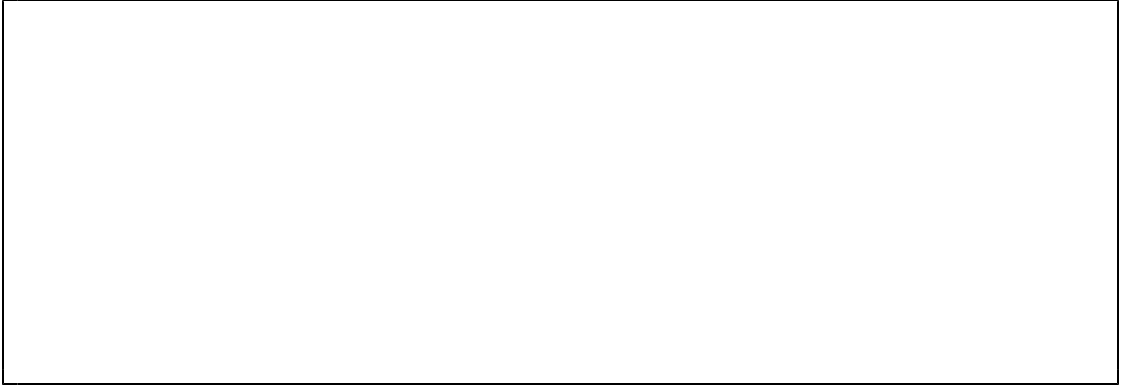
(7)

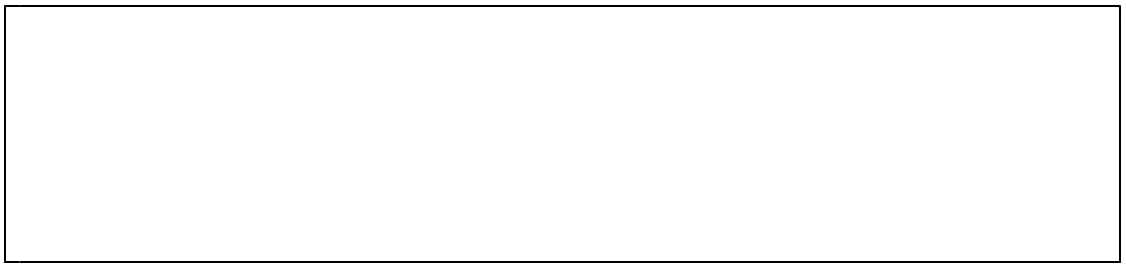
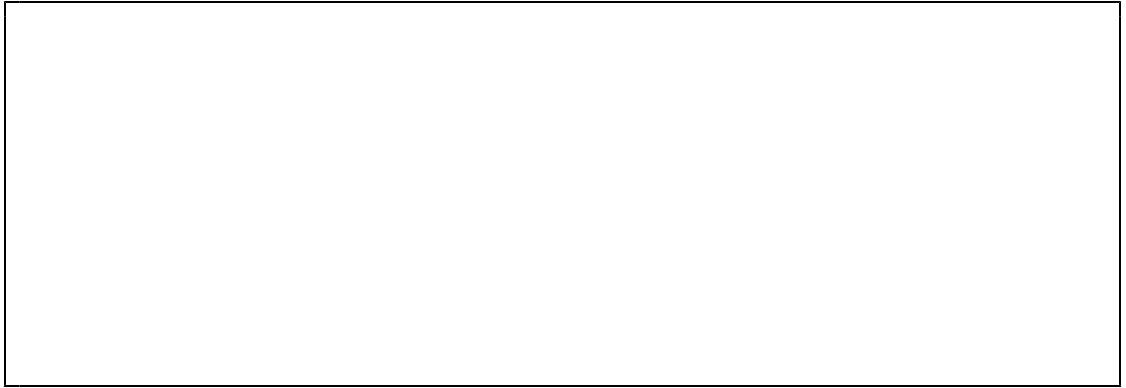
50 100m/ha                      100m/ha  
30 50m/ha

10

Ω







1. 3.9



2



3



PR



(3)

(4)

(5)

03(3502)8111	6063
03(3502)8036	
03(3502)8111	3256
03(3502)8047	

<http://www.naff.go.jp/>