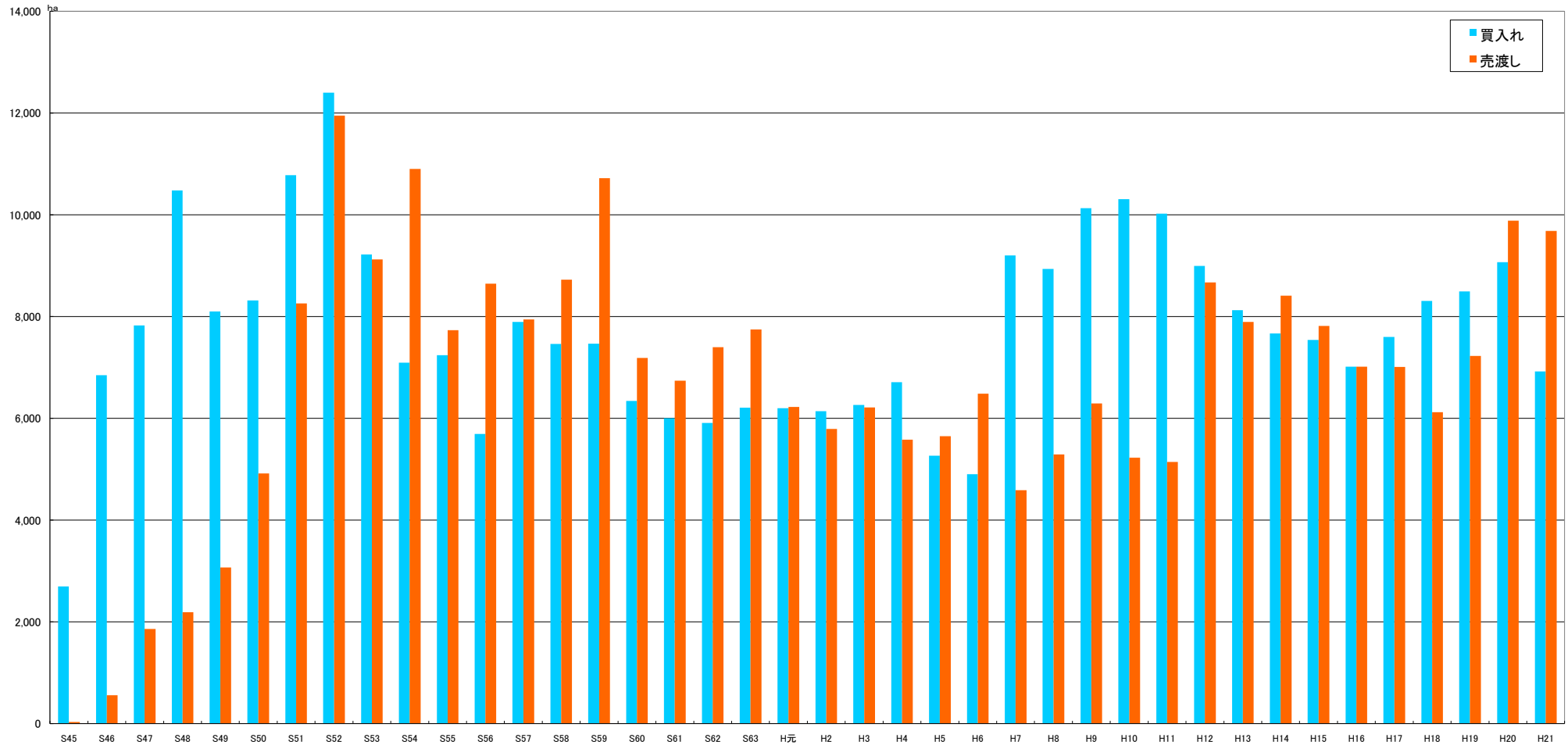


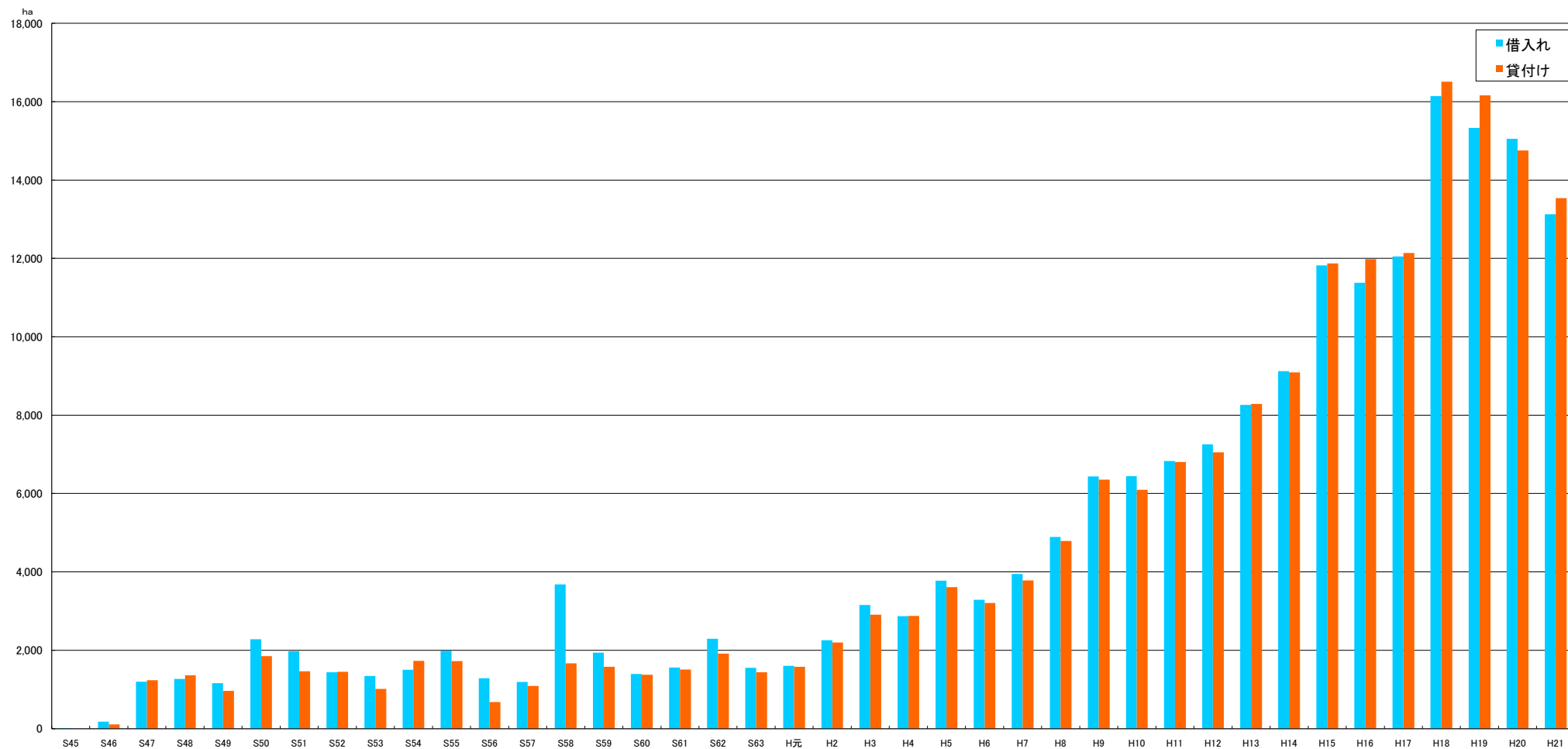
農地保有合理化事業の実績の推移(S45～H21)
【売買事業】



年度	S45	S46	S47	S48	S49	S50	S51	S52	S53	S54	S55	S56	S57	S58	S59	S60	S61	S62	S63	H元	H2	H3	H4	H5	H6	H7	H8	H9	H10	H11	H12	H13	H14	H15	H16	H17	H18	H19	H20	H21	累計
買入れ	2,697	6,848	7,830	10,481	8,101	8,321	10,779	12,404	9,222	7,093	7,245	5,696	7,897	7,465	7,469	6,345	6,005	5,913	6,212	6,201	6,143	6,264	6,713	5,270	4,905	9,205	8,939	10,131	10,311	10,025	8,998	8,129	7,669	7,544	7,017	7,603	8,308	8,496	9,069	6,922	307,884
売渡し	36	559	1,861	2,192	3,073	4,917	8,261	11,952	9,124	10,902	7,735	8,649	7,946	8,725	10,724	7,189	6,742	7,402	7,751	6,227	5,791	6,218	5,584	5,651	6,485	4,589	5,294	6,294	5,229	5,144	8,671	7,897	8,412	7,819	7,018	7,010	6,124	7,228	9,886	9,687	267,996

単位:ha

農地保有合理化事業の実績の推移(S45~H21)
【貸借事業】



年度	S45	S46	S47	S48	S49	S50	S51	S52	S53	S54	S55	S56	S57	S58	S59	S60	S61	S62	S63	H元	H2	H3	H4	H5	H6	H7	H8	H9	H10	H11	H12	H13	H14	H15	H16	H17	H18	H19	H20	H21	累計
借入れ	14	176	1,199	1,265	1,161	2,283	1,975	1,439	1,341	1,499	1,991	1,287	1,190	3,680	1,936	1,391	1,556	2,295	1,555	1,604	2,255	3,155	2,870	3,774	3,286	3,949	4,891	6,434	6,444	6,832	7,252	8,261	9,120	11,820	11,375	12,046	16,139	15,334	15,050	13,128	194,252
貸付け	0	108	1,235	1,362	964	1,851	1,466	1,450	1,016	1,729	1,726	678	1,092	1,666	1,578	1,374	1,509	1,913	1,439	1,576	2,198	2,908	2,875	3,612	3,208	3,783	4,788	6,355	6,095	6,804	7,049	8,288	9,089	11,873	11,978	12,137	16,510	16,159	14,758	13,541	189,741

単位:ha