

Other Prohibitions and Restrictions

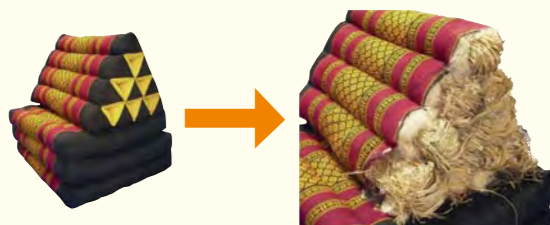
✗ Items prohibited from entry into Japan from all countries and regions

Soil, plants attached with soil, quarantine pests which are injurious to plants and plant products
Rice straw or rice husks (excluding those from the Korean Peninsula and Taiwan)

⚠ Items subject to import inspection

- ① Underground portion of ginger, turmeric, greater yam, coffee plants, and cacti, and seeds for cultivation such as watermelon, corn, and peas cannot be brought into Japan without a Certificate of Plant Inspection stating in writing that the item has undergone a field inspection at the country or region of origin
- ② Bulbs, fruit seedlings, potatoes, sweet potatoes, and sugar cane are subject to isolated cultivation for a fixed period (approximately one year) following import into Japan for the purpose of virus inspections. Narcissus bulbs are subject to hot water immersion treatment at the time of import.

Prohibited and Restricted Items (Example)

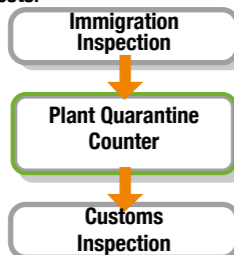


It is prohibited to bring rice straw products (triangular pillows made of rice straw etc.) into Japan from countries with established rice straw import prohibitions.

※ Please note that some craft products may contain plant matter as core material.

Import Inspection

Even if plant or plant product does not fall under the category of a prohibited item, they are still required to undergo inspection to ensure they are free from disease or pests.



- Fines may apply to plants and animals brought into Japan without undergoing inspection under Japan's Plant Quarantine Law.
- Items purchased at duty-free shops or small quantities of souvenirs are also required to undergo inspection. Be sure to submit such products for inspection at the Plant Quarantine counter before moving on to customs inspection.

Plants subject to conditional easing of import prohibition

Based on certain conditions, some varieties of fruit and other plant product can now be imported into Japan. Primary fruit varieties for which import prohibitions have been eased allowing them to be brought into Japan in carry on luggage include papaya from Hawaii, mangosteens and mangoes from Thailand and mangoes from Australia. Products that do not meet these conditions, including products purchased at duty free shopping outlets, cannot be brought into Japan.

Plant material subject to the conditional easing of import prohibitions are packaged specifically for Japan, labeled "FOR JAPAN" and carry a quarantine certificate.



Import of live insects

🦋 《Import Prohibitions》

A number of foreign insects (including flower beetles, phasid, and butterflies) carry the potential to cause severe damage to Japanese agriculture and forestry. Such live insects cannot be brought into Japan based on the provisions of the Plant Quarantine Law, which designates these as harmful pests that must be quarantined. When bringing insects into Japan from overseas, please contact a Plant Protection Station before traveling.

Members of the scarab beetle family, such as the stag beetle and Japanese rhinoceros beetle are further subject to import restrictions stipulated in the Invasive Alien Species Law and require submission of proof of species when importing into Japan. Please consult the Ministry of the Environment's Invasive Alien Species Law homepage for further details and procedures regarding the import of these species into Japan.

- ◆ Invasive Alien Species Law homepage
<http://www.env.go.jp/nature/intro/>
- ◆ Ministry of the Environment, Nature Conservation Bureau, Wildlife Division
TEL: 03-3581-3351

Other Applicable Laws

◎Regulations

Washington Convention (the Convention on International Trade in Endangered Species of Wild Fauna and Flora). The Washington Convention prohibits or restricts international trading in plants at risk of extinction, including orchids, cacti, and cycads. For further information regarding the Washington Convention, please contact the following telephone number:

- For information regarding commercial products: Ministry of Economy, Trade and Industry, Trade and Economic Cooperation Bureau, Trade Licensing Division
TEL: 03-3501-1659 FAX: 03-3501-0997
- Inquiries regarding live plants and animals: Ministry of Economy, Trade and Industry, Trade and Economic Cooperation Bureau, Trade Licensing Division, Agricultural and Fisheries Section
TEL: 03-3501-0532 FAX: 03-3501-6006
- Ministry of Economy, Trade and Industry's homepage on procedures regarding the Washington Convention
http://www.meti.go.jp/policy/external_economy/trade_control/boekikanri/cites/cites_im.htm

Major Quarantine Offices

- **Yokohama Plant Protection Station** ... 045-211-7153
 - Sapporo Sub-Station 011-852-1809
 - Shin-Chitose Airport Detached office ... 0123-24-6154
 - Shiogama Sub-Station 022-362-6916
 - Sendai Airport Detached office 022-383-4585
 - Narita Sub-Station PTB1 0476-32-6694
 - PTB2 0476-34-2352
 - Tokyo Sub-Station 03-3599-1137
 - Haneda Airport Sub-Station 03-5757-9790
 - Niigata Sub-Station 025-244-4401
- **Nagoya Plant Protection Station** 052-651-0112
 - Fushiki-Toyama Sub-Station 0766-44-0990
 - Shimizu Sub-Station 054-352-3775
 - Chubu Airport Sub-Station 0569-38-8433
- **Kobe Plant Protection Station** 078-331-2386
 - Osaka Sub-Station 06-6571-0801
 - Kansai Airport Sub-Station 072-455-1936
 - Hiroshima Sub-Station 082-251-9593
 - Hiroshima Airport Detached office 0848-86-8261
 - Sakaide Sub-Station 0877-46-4108
- **Moji Plant Protection Station** 093-321-2601
 - Fukuoka Sub-Station 092-291-2504
 - Fukuoka Airport Branch 092-477-7575
 - Kagoshima Sub-Station 099-222-1046
 - Kagoshima Airport Branch 0995-58-2428
 - Naze Sub-Station 0997-52-0459
- **Naha Plant Protection Station** 098-868-2850
 - Naha Airport Branch 098-857-0054

◆ Taking plant out of Japan..... ◆

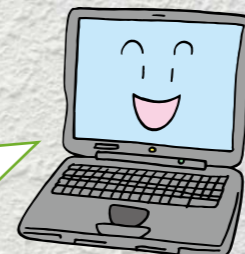
Different countries have different measures in place concerning prohibitions on imports, restrictions, and sterilization treatments for the same plant material. For further details, please contact your nearest Plant Protection Station.

111102

Ministry of Agriculture, Forestry and Fisheries of Japan
Plant Protection Station

<http://www.maff.go.jp/pps/>

Please consult the website for further information.



Plant Quarantine Notice

Certain plants and plant products cannot be imported into Japan

Ministry of Agriculture, Forestry and Fisheries of Japan
Plant Protection Station

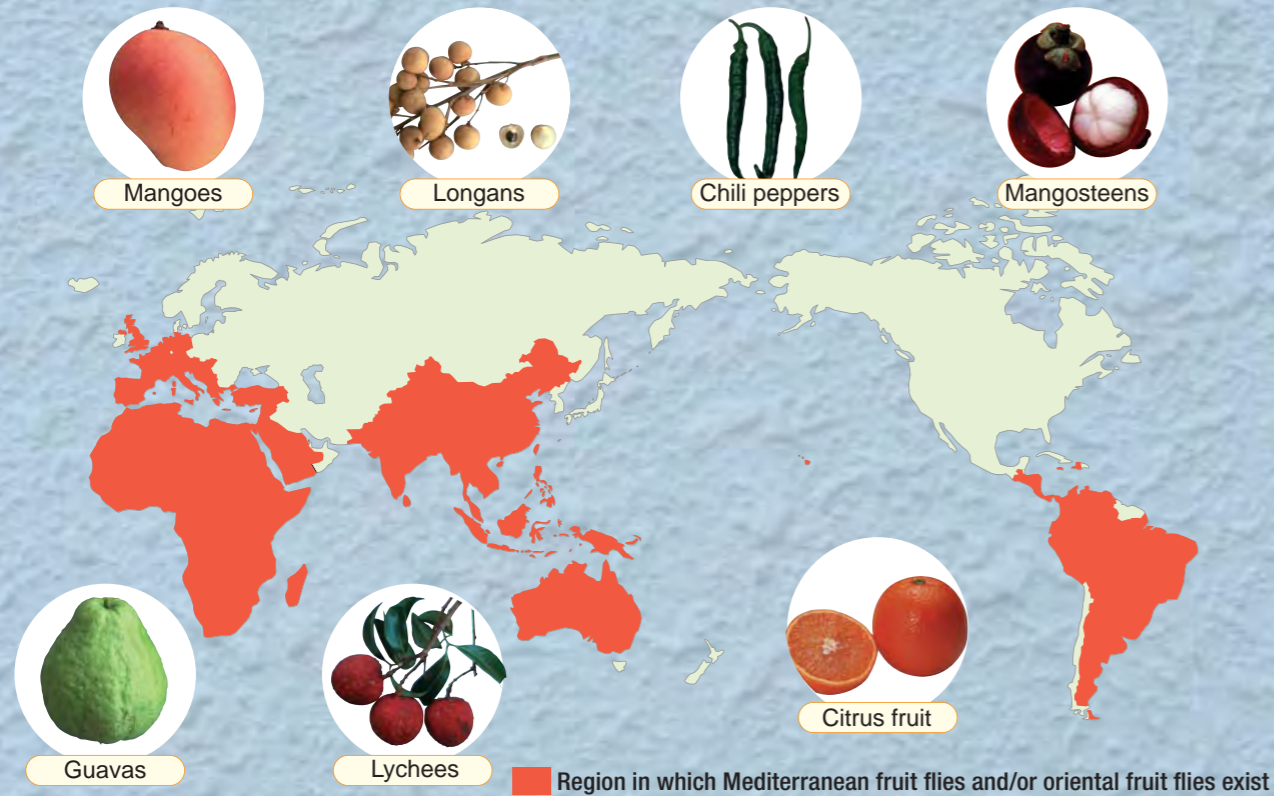


MAFF

⊗ Principal plants and regions subject to import prohibitions

These are merely examples. For details, please inquire with Japanese plant protection station or visit our website. <http://www.maff.go.jp/pps/>

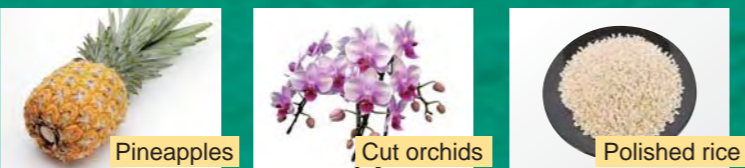
◆ Most fruit and vegetables from countries and regions in which Mediterranean fruit flies and/or oriental fruit flies are found cannot be brought into Japan.



◆ Fruits such as apples and cherries, and walnuts (in the shell) cannot be brought into Japan from countries and regions in which codling moths are found.



◆ The following items can be brought into Japan following an inspection verifying the absence of any plants pests and disease.



◆ The following items are also prohibited from being brought into Japan.

- ◇ "Sweet potatoes (including stems and leaves)" from Asia, the United States, Latin America and the Caribbean, Australia, Africa, etc.
- ◇ "Seedlings such as citrus or anthurium seedlings" from the United States and Hawaii.
- ◇ "Straw" from Europe, the United States, Canada, Mexico, New Zealand, etc.
- ◇ "Seedlings or cut flowers from the rose family (Rosaceae) including apples, pears, hawthorn, and pyracantha" from the United States, Canada, Mexico, Europe, New Zealand, Israel, Iran, etc. **However, roses are exempt from these restrictions.**

● Major plants pests and disease requiring precaution

There is a large variety of foreign pests and diseases that carry the potential to cause severe damage to Japanese agriculture and forestry. In order to prevent the entry of these pests into Japan, all plant material being brought into the country is subject to quarantine inspections. There is a large variety of plants and plant products that are prohibited or restricted by law to be brought into Japan from countries or regions in which the pests that have caused severe damage globally however are not present in Japan are found. Japanese plant quarantine inspections target a large number of other pests and diseases in addition to those shown here.

● **Fruit fly**
Fruit fly causes considerable damage to fruits and vegetables. Larvae infest the fruit and make it unsuitable for harvesting. The fruit flies are widely distributed in the world.

● **Mediterranean fruit fly**

● **Oriental fruit fly**

● **Melon fly**

● **Codling moth**
Codling moth has a considerable impact to apples and pears, etc. Adult insects lay eggs on unripe fruits or leaves, and the larvae born from them infest the fruits.

● **Citrus burrowing nematode**
This worm causes considerable damage to a variety of plants, and especially affects fruit trees. Plants that become a host to this pest will eventually die.

● **Potato wart**
A disease that does serious harm to potato crops. It leads to the development of lumpy warts on the potato which will eventually rot.

● **Fruit fly**
Fruit fly larvae feed inside the fruit. Fruits that pay hosts to such larvae may be severely damaged under the skin while appearing normal on the outside.