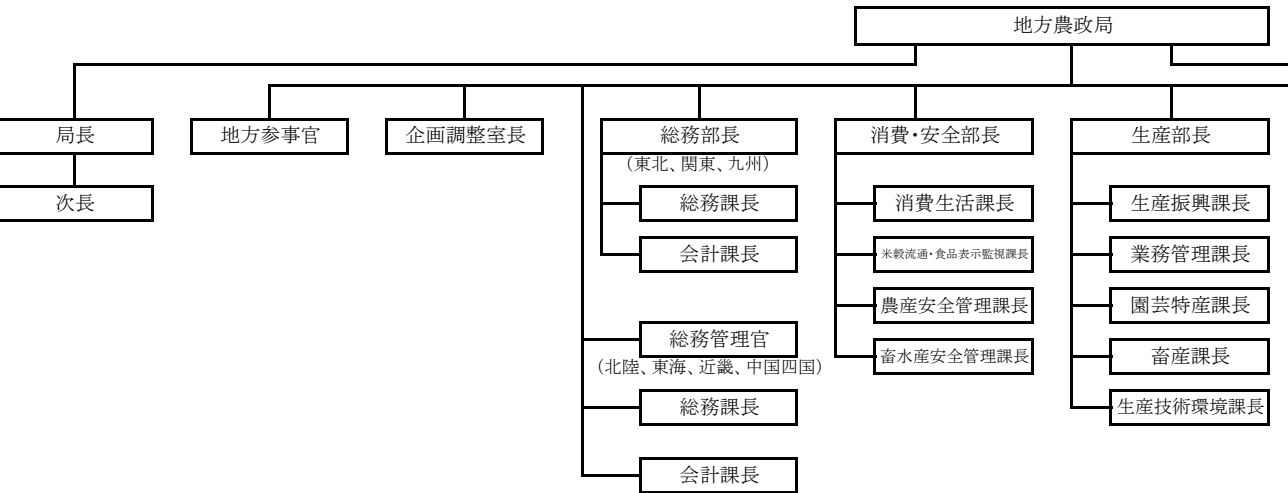
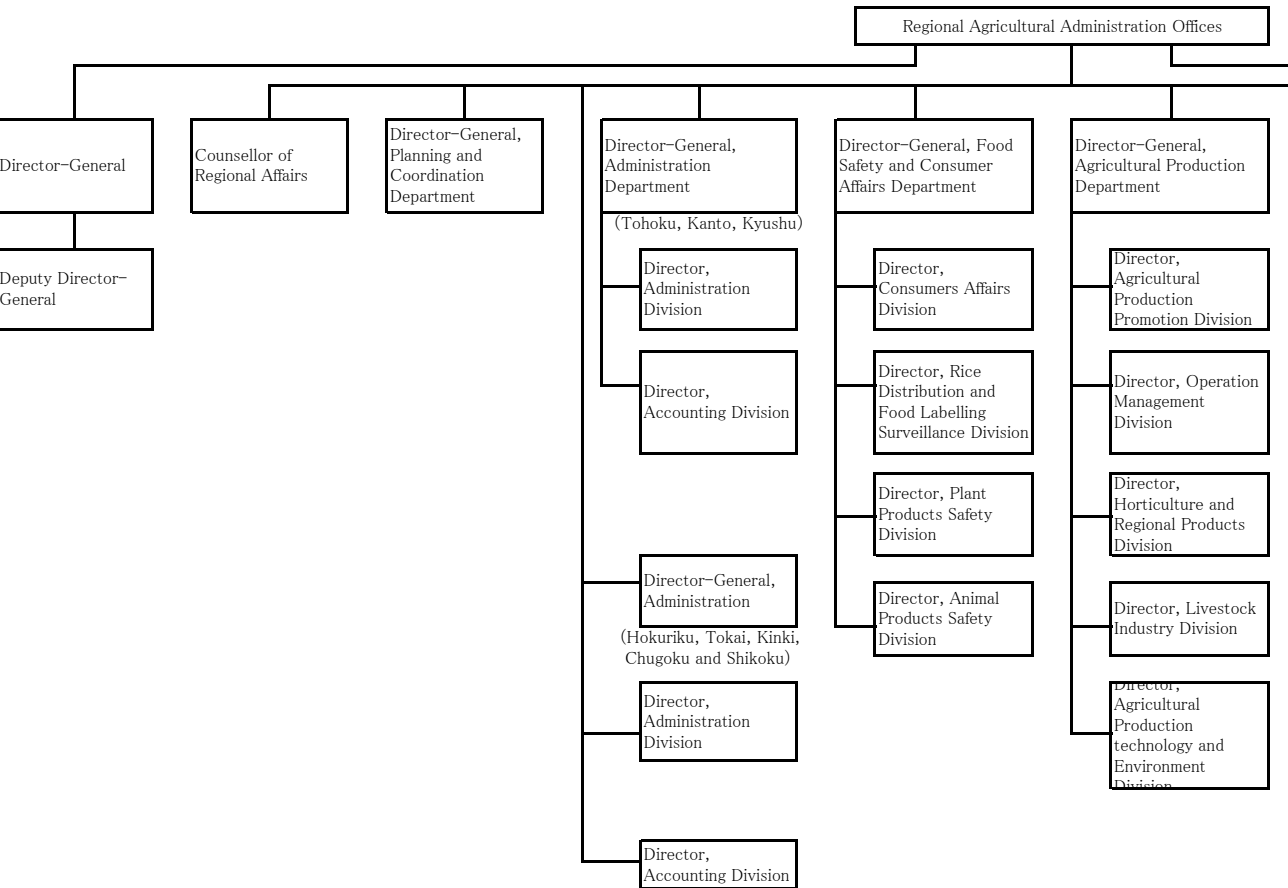


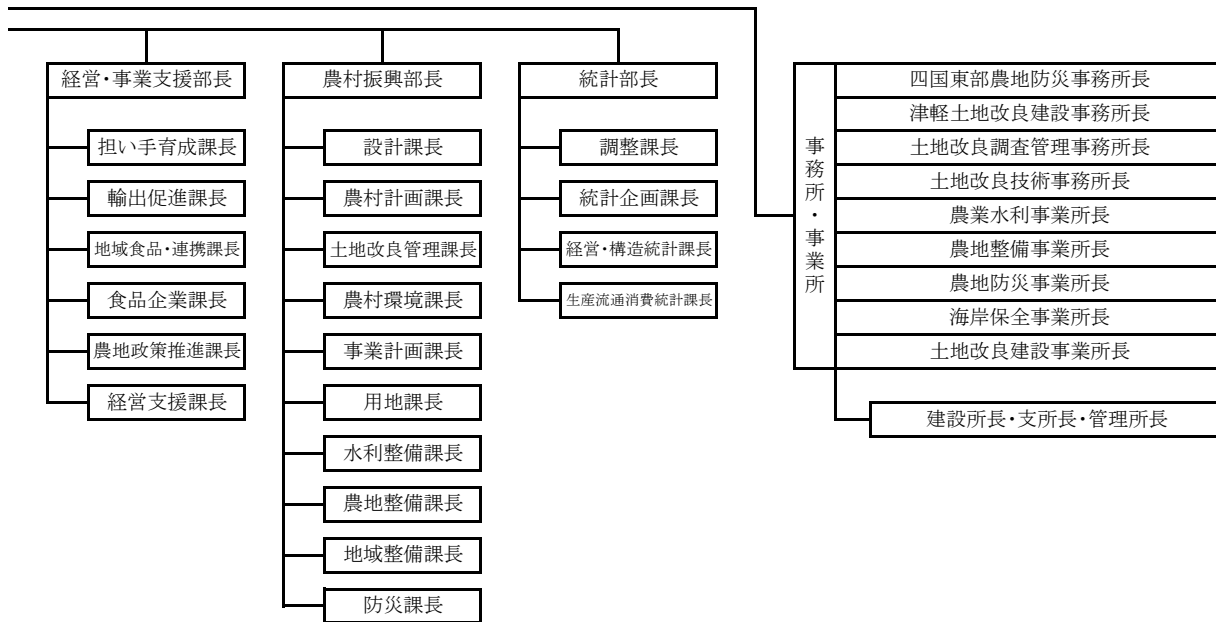
8 地方農政局業務運営体制図



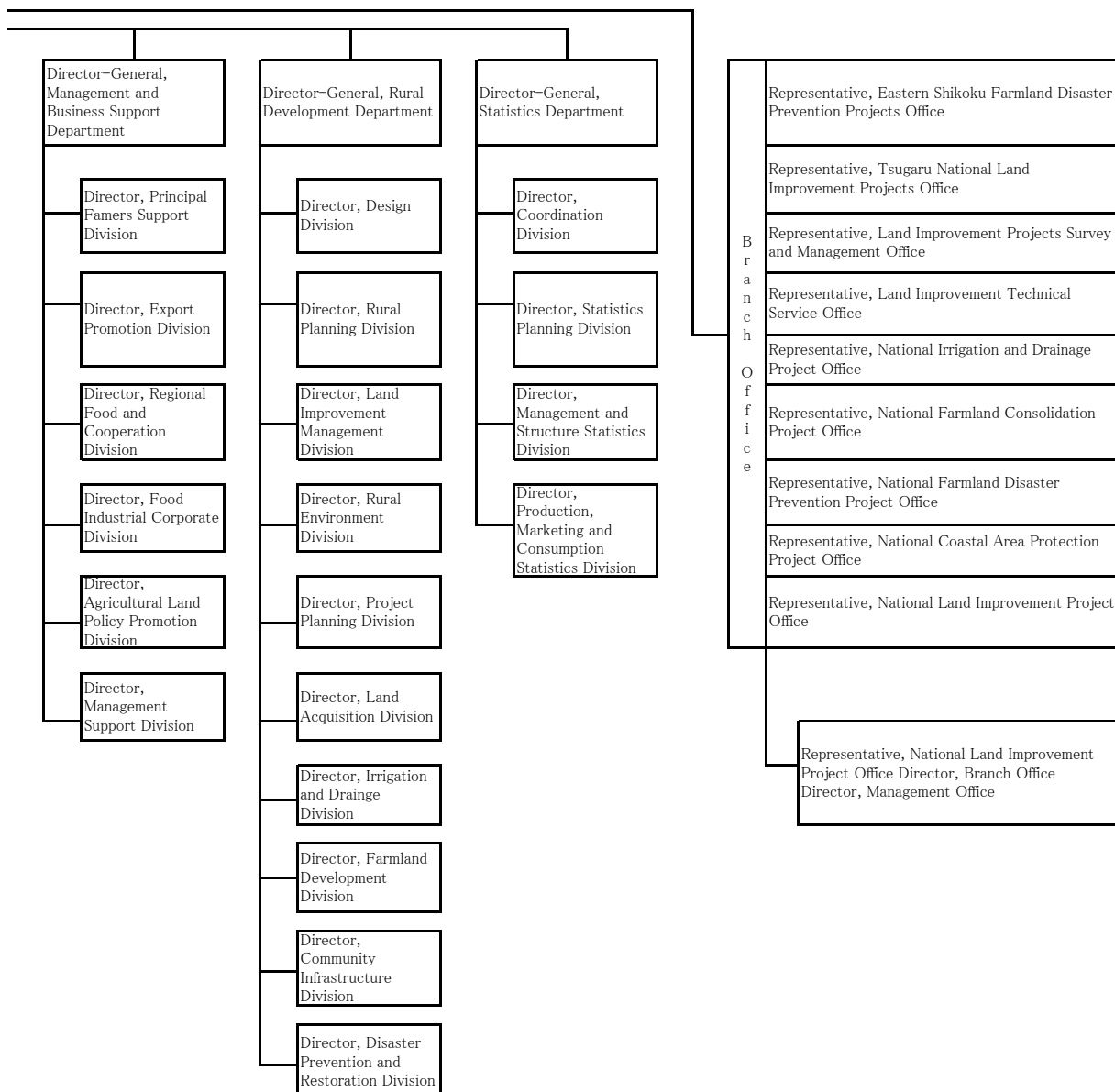
8 Organization of Regional Agricultural



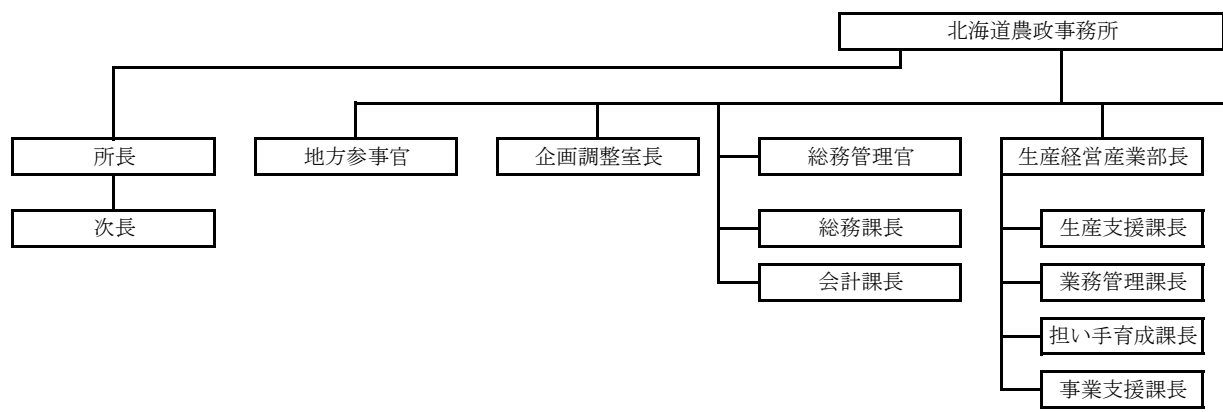
(令和2年4月1日現在)



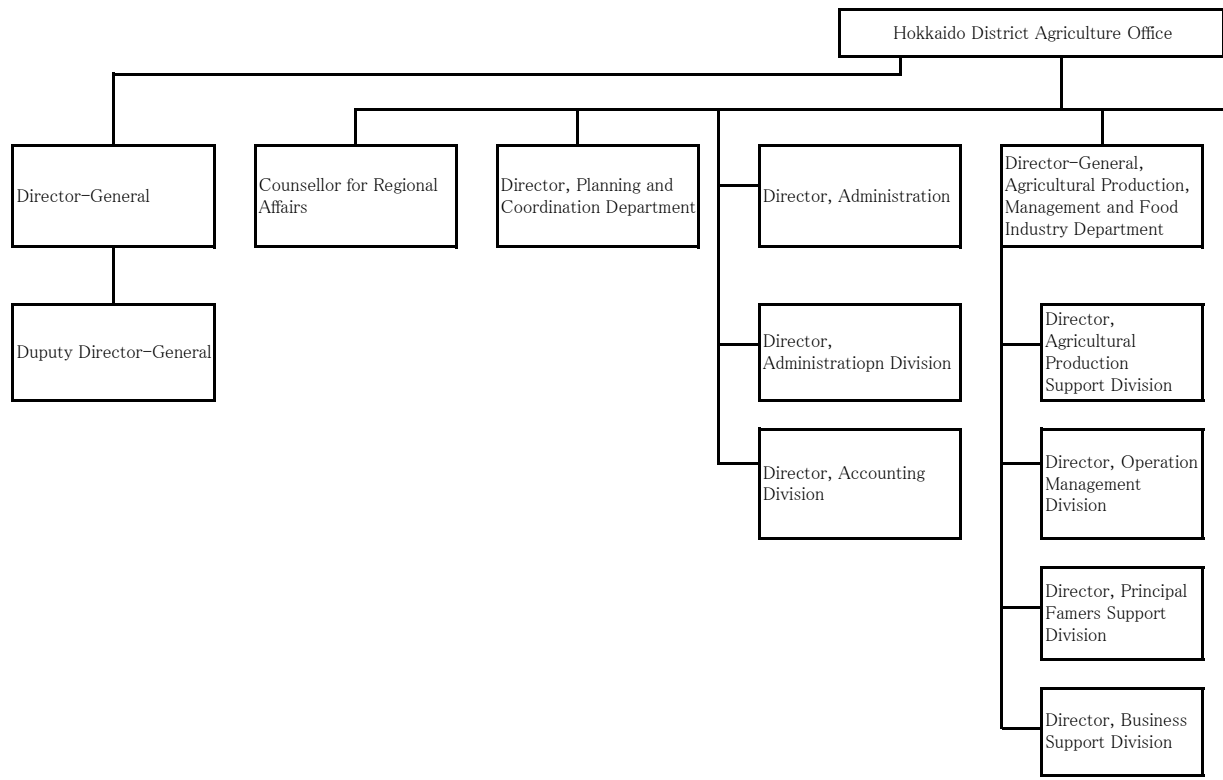
Administration Offices (As of April 1, 2020)



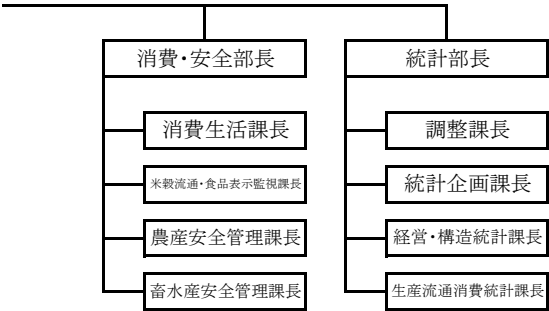
9 北海道農政事務所業務運営体制図



9 Organization of Hokkaido District



(令和 2 年 4 月 1 日現在)



Agriculture Office (As of April 1, 2020)

