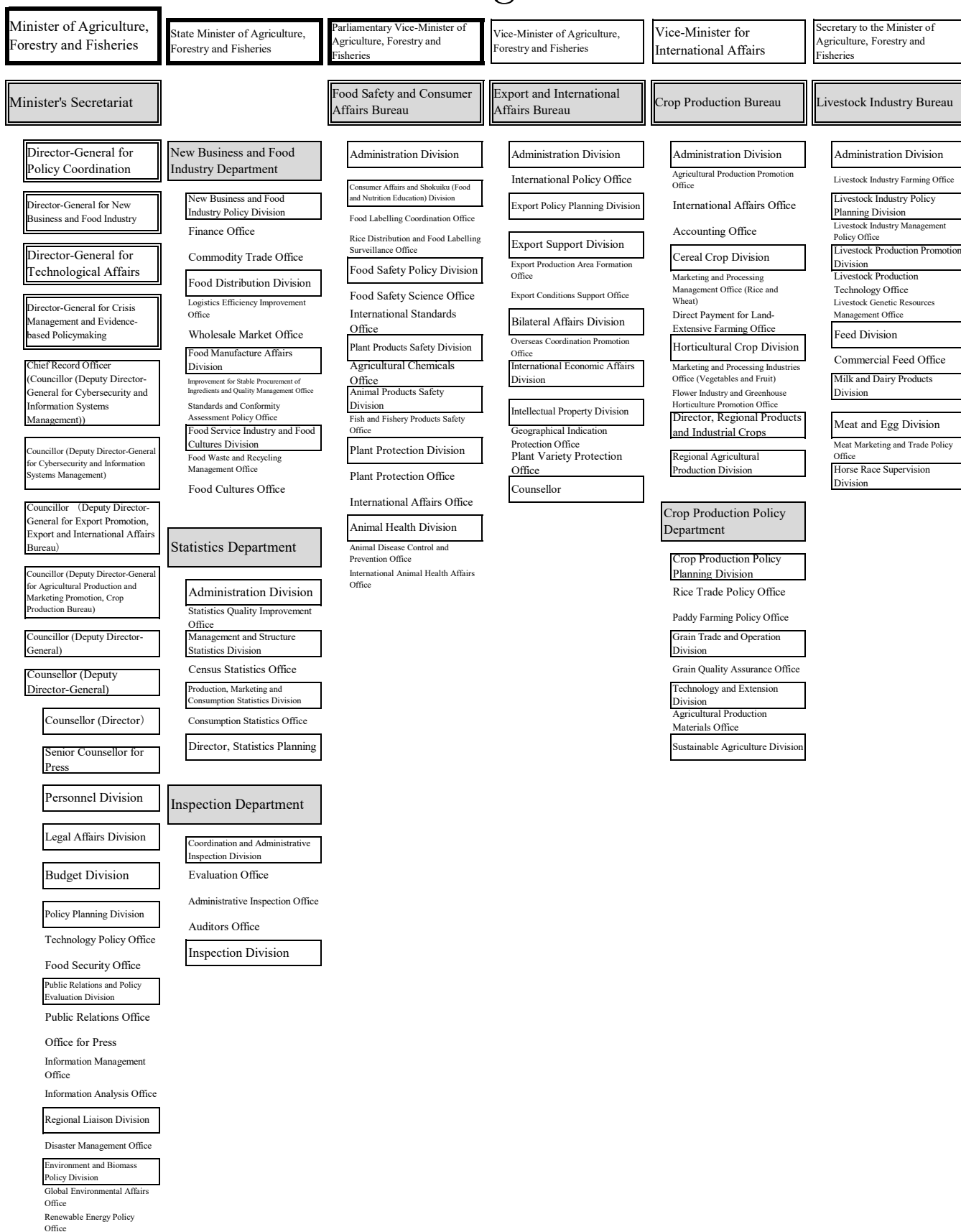


7 Organization of MAFF



(As of October 1, 2024)

Management Improvement Bureau	Rural Development Bureau	Agriculture, Forestry and Fisheries Research Council	Forestry Agency	Fisheries Agency	Fisheries Enforcement Headquarters
Administration Division	Deputy Director-General	Chairman	Deputy Director-General	Deputy Director-General	Deputy Director-General
Tax Policy Coordination Office	Administration Division	Member of Council	Forest Policy Planning Department	Fisheries Policy Planning Department	Members of the Fisheries Enforcement Headquarters
Agricultural Business Policy Division	Rural Policy Department	Director-General, Council's Secretariat(Director-General for Technological Affairs)	Administration Division	Administration Division	
Agricultural Business Promotion Office	Rural Planning Division	Research Counsellor (Deputy Director-General)	Auditors Office	Vessels Management Office	
Agricultural Land Policy Planning Division	Rural Revitalization Promotion Office	Senior Director, Research and Development	Policy Planning Division	Policy Planning Division	
Promotion of Farmland Accumulation and Consolidation Office	Urban Agriculture Office	Director, Research and Development	Forestry Management Improvement Division	Fisheries Structure Improvement Office	
Young Farmers and Women Division	Regional Development Division	Research Coordination Division	Forestry Labor and Management Support Office	Fisheries Management Improvement Division	
Women's Empowerment Office	Interaction Between Urban and Rural Areas Division	Research Policy Planning Division	Non-timber Forest Products Office	Fisheries Cooperatives Office	
Agricultural Cooperatives Division	Countryside Stay Promotion Office	Innovation Strategy Office	Wood Industry Division	Fisheries Processing Industries and Marketing Division	
Agricultural Cooperatives Organization Office	Promotion of Collaboration between Agriculture and Welfare Office	Research Promotion Division	Wood Products Technology and Development Office	Fishery Products Trade Office	
Finance Division	Wildlife Management and Rural Environment Division	Business-Academia Cooperation Office	Wood Use Promotion Division	Fisheries Proper Distribution Promotion Office	
Agricultural Insurance Division	Wildlife Damage Prevention and Utilization Office	Director, International Research Collaboration Division	Wood Products Trade Office	Director, Fisheries Insurance	
Agricultural Revenue Insurance Office	Rural Environment Conservation Office	Tsukuba Business-Academia Cooperation Support Center	Private Forest Department	Resources Management Department	
Agricultural Insurance Supervisor	Rural Infrastructure Department		Planning Division	Councillor	
	Design Division		Construction Planning and Coordination Office	Counsellor	
	Project Planning and Coordination Office		International Forestry Cooperation Office	Fisheries and Resources Management Division	
	Construction Planning and Coordination Office		Forest Multiple Use and Conservation Division	Resources Management Promotion Office	
	Overseas Land Improvement Cooperation Office		Forest Management Consolidation Office	Recreational Fishing and Coastal Fisheries Office	
	Land Improvement Planning and Management Division		Rural Development and Greening Office	International Affairs Division	
	Water Resources Division		Forest and Forestry Infrastructure Improvement Division	Whaling Affairs Office	
	Agricultural Water Management Office		Silviculture and Thinning Promotion Office	Tuna Fisheries Office	
	Facilities Management Office		Conservation Division	Overseas Fisheries Cooperation Office	
	Farm and Rural Land Resources Division		Forest Disaster Prevention and Restoration Office	Fisheries Enforcement Division	
	Management Oriented Farmland Consolidation Office		Forest Research, Extension and Protection Division	Foreign Fisheries Inspection Office	
	Agricultural Multi-functionality Payment Office		Technology Development Office	Director, Catch Monitoring	
	Community Infrastructure Division		Forest Protection Promotion Office		
	Disaster Prevention and Restoration Division		National Forest Department	Resources Enhancement Promotion Department	
	Disaster Prevention and Mitigation Office		General Affairs Division	Counsellor	
	Disaster Restoration Office		Welfare Office	Research and Technological Guidance Division	
			National Forest Planning Division	Marine Technology Office	
			National Forest Multiple Use Promotion Office	Resources and Environment Research Division	
			National Forest Ecosystem Conservation Office	Ecosystem Conservation Office	
			National Forest Management Division	Fish Ranching and Aquaculture Division	
			National Forest Property Office	Inland Waters Fishery Promotion Office	
				Fisheries Infrastructure Department	
				Planning and UMIGYO Policy Division	
				Construction Division	
				Fishing Communities Promotion and Disaster Prevention Division	
				Fisheries Facilities Disaster Restoration Office	

*1 Director-General of Fisheries Agency will be assigned.

*2 Deputy Director-General of Fisheries Agency will be assigned.

*3 Positions which are marked as ※ aside them will be assigned.