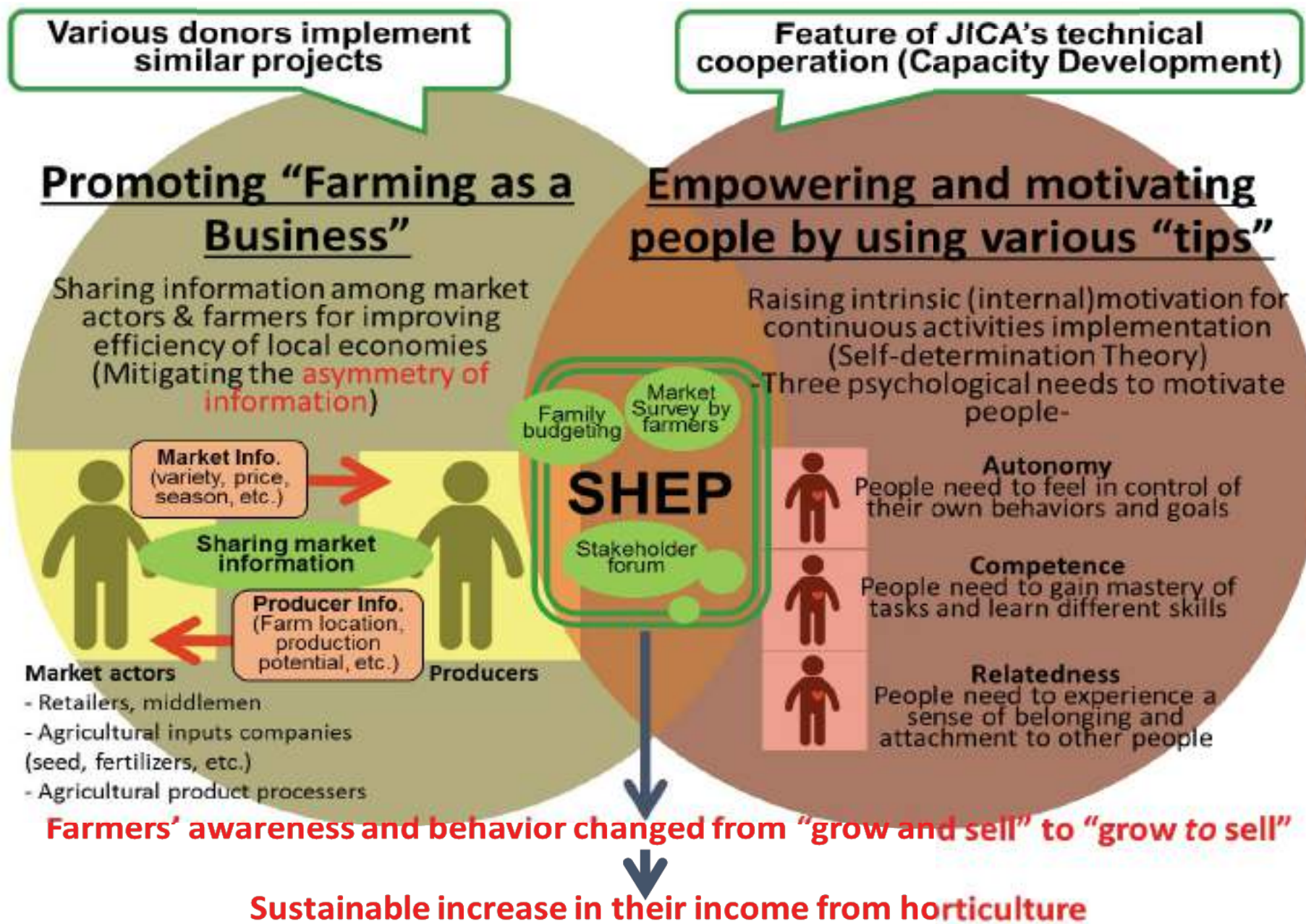


# 1. Background Cont'

## SHEP Approach essential steps

Essential 4 Steps	Activities in the Project
1. Selection of Targets & Sharing Vision/Goal	<ul style="list-style-type: none"> <li>◆ Sensitization Workshop</li> <li>◆ Selection of Target Sub-county through Proposal System</li> <li>◆ Selection of Target Groups by Sub-county</li> </ul>
2. Farmers' Awareness of Current Situation & New Information	<ul style="list-style-type: none"> <li>◆ Participatory Baseline Survey</li> <li>◆ Stakeholder Forum</li> <li>◆ Gender Mainstreaming &amp; Group Empowerment Training</li> <li>◆ ToT on Market Survey, Crop Selection &amp; Action Plan</li> <li>◆ Market Survey by farmers</li> </ul>
3. Decision Making by Farmers	<ul style="list-style-type: none"> <li>◆ Crop Selection by farmers</li> <li>◆ Crop Action Plan by farmers</li> </ul>
4. Provision of Technical Solutions	<ul style="list-style-type: none"> <li>◆ ToT on Crop Production for Extension Workers</li> <li>◆ In-field Trainings for Farmers</li> <li>◆ Engineering Based Activities</li> </ul>
<b>“SHEP Approach”</b> ( <i>Small Holder Empowerment &amp; Promotion Approach</i> )	

# 1. Background Cont'



# 1. Background Cont'

- The SHEP Approach has been implemented in 3 phases
  - ✓ 1<sup>st</sup> phase: SHEP (2006-2009)
  - ✓ 2<sup>nd</sup> phase: SHEP UP (2010-2015)
  - ✓ 3<sup>rd</sup> phase: SHEP PLUS (2015-2020)
- **Overall Goal:** “ *To improve the Livelihood of the Smallholder Horticulture farmers*”

## 2.0: Achievements

Project Phase	Project Phase Name	No of Counties	No. of direct beneficiaries (Farmers)
1	Smallholder Horticulture Empowerment Project ( <b>SHEP :2006-2009</b> )	4	2,500
2	Smallholder Horticulture Empowerment and Promotion Unit Project ( <b>SHEP UP: 2010-2015</b> )	33	14,000
3	Smallholder Horticulture Empowerment and Promotion Project for Local and Up Scaling ( <b>SHEP PLUS: 2015-2020</b> )	18	4,500
<b>Total</b>			<b>21,000</b>

\*Training of staff from **23** African countries on SHEP Approach-**133** officials trained in Kenya and Japan

## 3.0: Outcomes

- Improved productivity
- **One group** is now an exporter of flowers
- On average farmers' **net income** from horticulture increased by at least **80%**
- Average Net-Income Difference between **Male & Female** farmers decreased by about **15%**
- **840** farmer groups linked to Various Business Service providers



## 3.0: Outcomes: Improved productivity



Arabicum



Mollucella flower



Snowpeas



Bullet Chillies



Okra



Tomatoes



## 3.0: Outcomes: Improved productivity



Cabbage



Irish Potatoes



Watermelon



Cauliflower



Amaranthus



Banana

## 4.0: Impact

- Improved **food security & livelihood support** ( *Some farmers have diversified to on farm & off farm enterprises* )
- Higher income to households has led to improved **standards of living**
- Improvement in job creation
- Increase in community resource mobilization & creation of revolving funds
- Some groups have evolved to **Community Based Organizations (CBOs)**



## 4.0 Impacts: Diversification



Dairy Cows



Goats



Seedling production



Agrovet



Truck



Motor Cycle

# 4.0 Impacts: Implementation of Gender action plans



Gas Cooker using bio gas



Fireless Cookers



Energy Saving Jiko



Water Tanks



Napier Grass

# 5.0: Challenges & Way forward

	Challenge	Way forward
1	Weak group leadership and problem of group dynamics in some groups	Involved Social Services Department
2	High dependence on rain fed Agriculture	Trained on water harvesting & utilization technologies



# 6.0: Lessons Learnt

- ***Vulnerable groups can*** also engage in **profitable** horticulture production as long as they are guided to select the crops they can manage such as ***local vegetables***
- ***Market survey*** is a key ingredient to success ( “**Grow to Sell**” and Not “GROW and then SELL”)
- Focused ***stakeholder forum*** is necessary for sustainability
- Training on ***Gender Mainstreaming & Joint Family*** resources management (**Family budgeting**) helps farmers utilize their income wisely

# Asante Sana Domo Arigato Gozaimasu



Welcome to  
Kenya

# Abbreviation

- **“SHEP Approach”**: Smallholder Horticulture Empowerment & Promotion Approach