

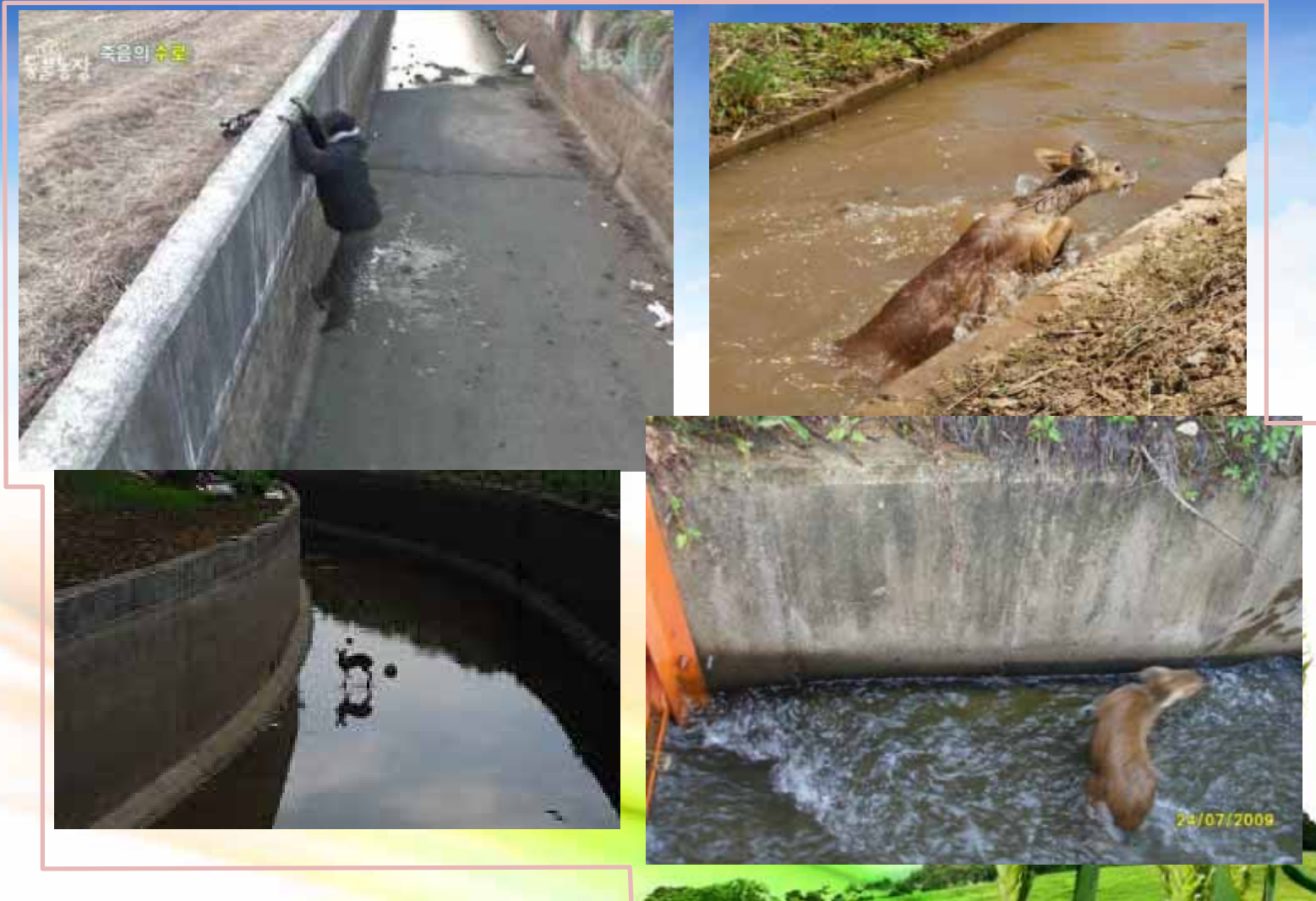


Fishway of Lake Biwa, Japan





3) Environment-friendly canal management



Recently, agricultural canals became **the canal of death** to animals



Installation eco-passage in irrigation canal





Contract of Paddy Field Management (CPF_M) to protect winter migrants in Korea

- Korean government enacted CPF_M to conserve habitats for migratory birds in 1998
- Preliminary research was conducted to develop a rationale and to bring CPF_M to effect in 2001.
- Pilot project was practiced in three local governments in 2002 with partially financial support from central government.
- CPF_M has been implemented over 14 local governments



Incentives to farmers under CPFM

Spreading rice straw : \$ 234 ha⁻¹



Paddy field flooding : \$ 581 ha⁻¹



✓ Barley cultivation : \$ 3,668 ha⁻¹



Not harvesting rice : \$ 9,035 ha⁻¹



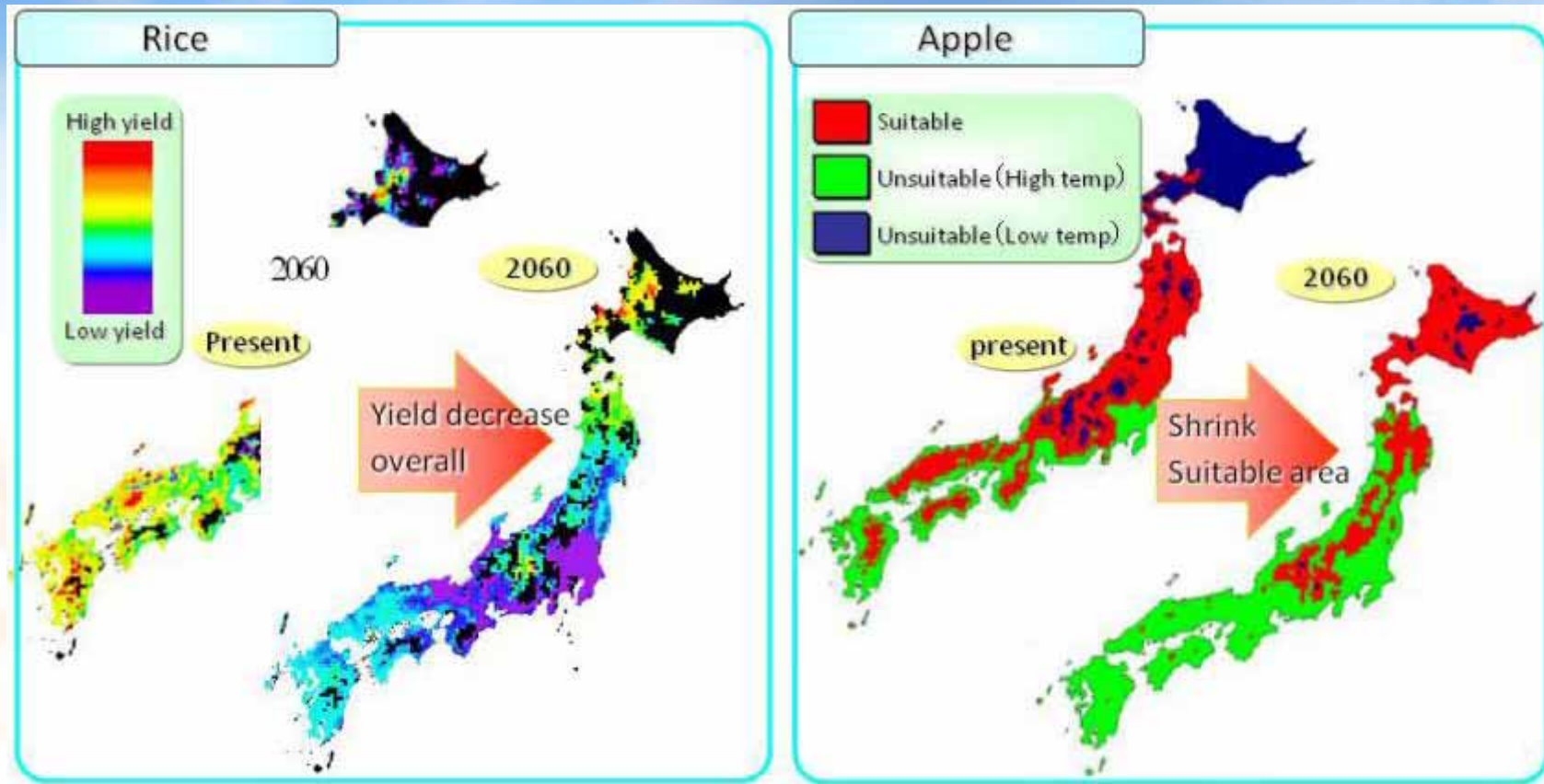


4-3 Case studies adapting climate change





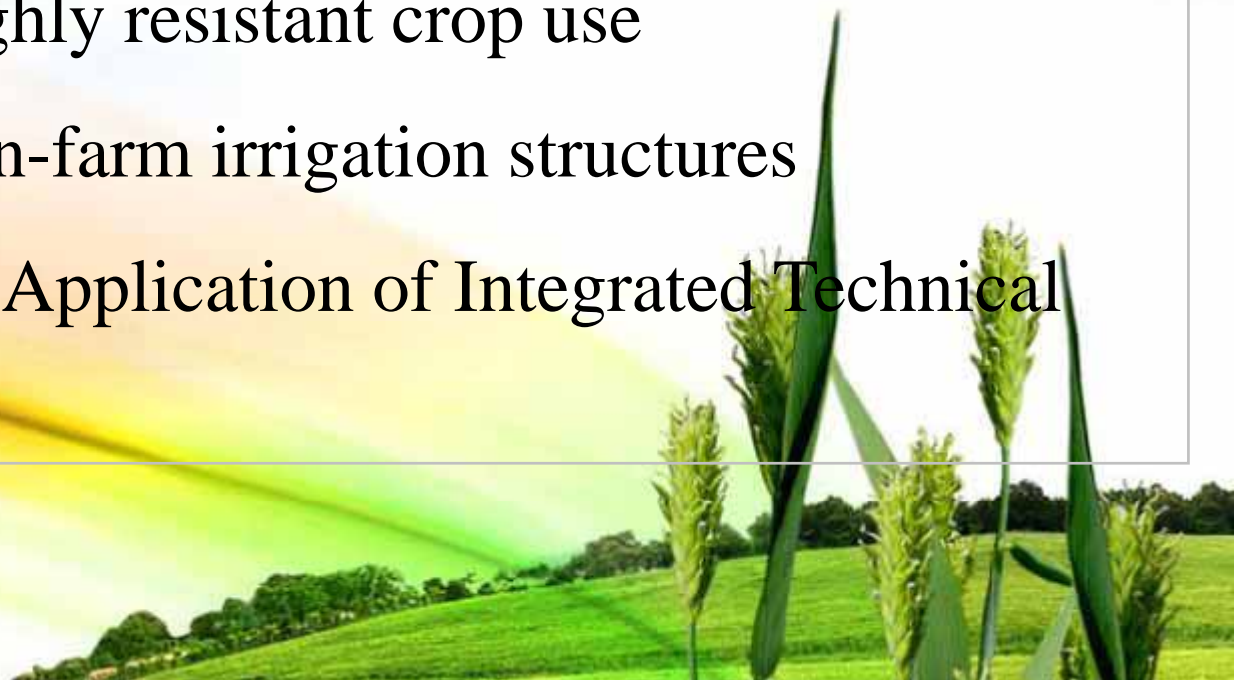
Adaptation to climate change in Japan





Mainstreaming Climate Change Adaptation in China

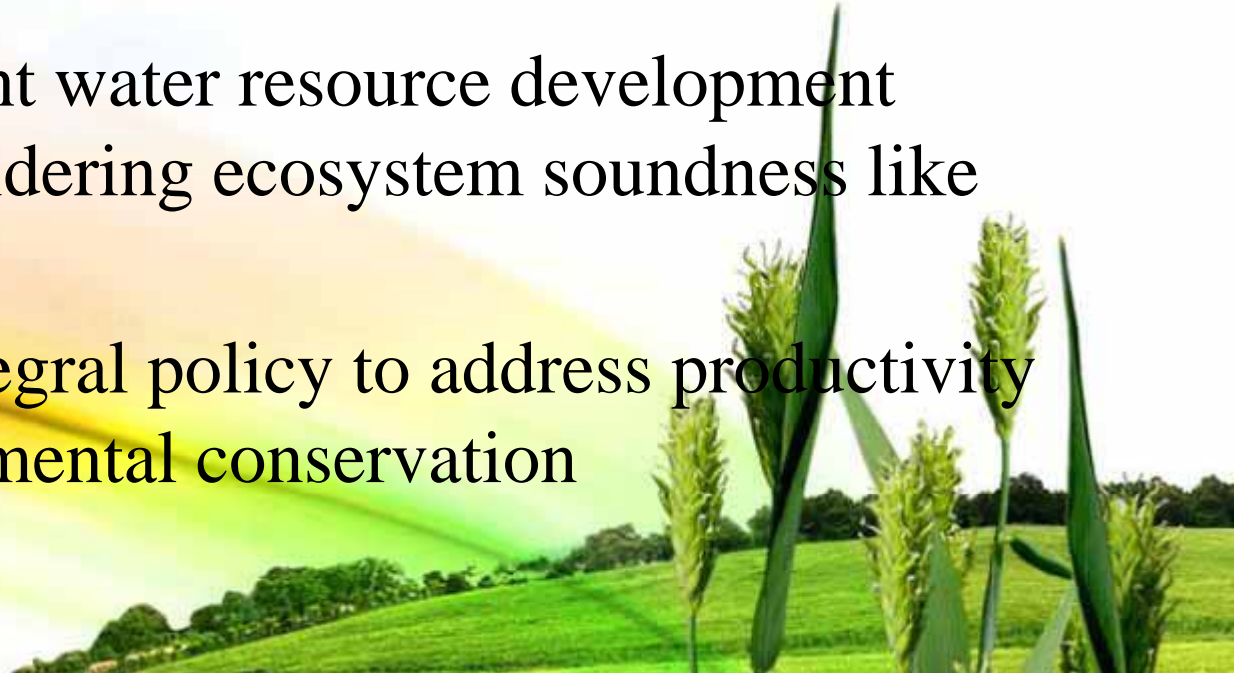
- Cropping structure adjustment and adoption of adaptive techniques based on characteristics of local climatic resources
- Promotion of highly resistant crop use
- Completion of on-farm irrigation structures
- Enhancement of Application of Integrated Technical Measures





5. Recommendations for sustainable paddy farming

- It is necessary to promote paddy farming
- For equilibrium between productivity and environment
 1. To accelerate efficient use of water resources
 2. To implement water resource development project considering ecosystem soundness like fishway
 3. To adopt integral policy to address productivity and environmental conservation





Thank you for your kind
attention

