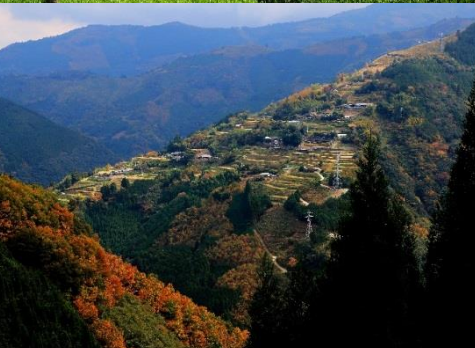




Globally Important Agricultural Heritage Systems

Designated sites in JAPAN



MAFF

JAPAN GOV

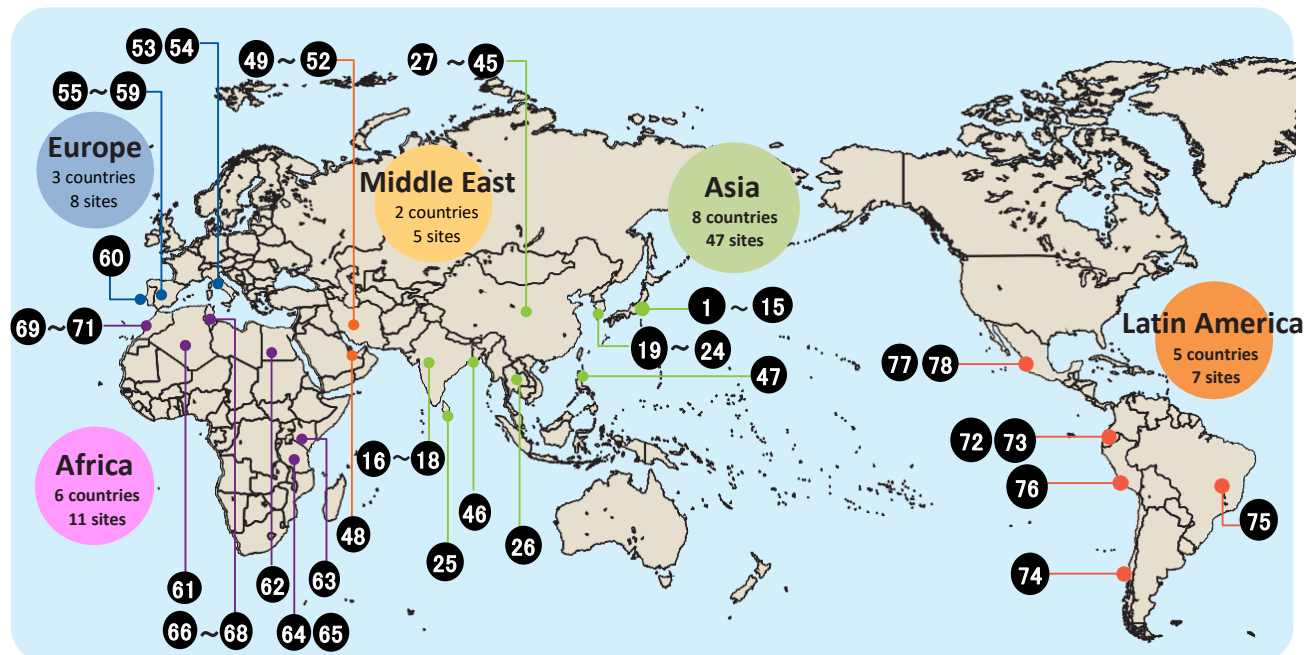
THE GOVERNMENT OF JAPAN

What is GIAHS?

Globally Important Agricultural Heritage Systems (GIAHS) is defined by Food and Agriculture Organization of the United Nations (FAO) as "Remarkable land use systems and landscapes which are rich in globally significant biological diversity evolving from the co-adaptation of a community with its environment and its needs and aspirations for sustainable development".



78 regions in 24 countries have been designated on a global scale, and 15 regions have been designated in Japan thus far (as of October 2023)



Contribution to the SDGs

Efforts in GIAHS designated sites will also make a significant contribution to achieving the Sustainable Development Goals advocated by the United Nations.



Agricultural heritage around the world

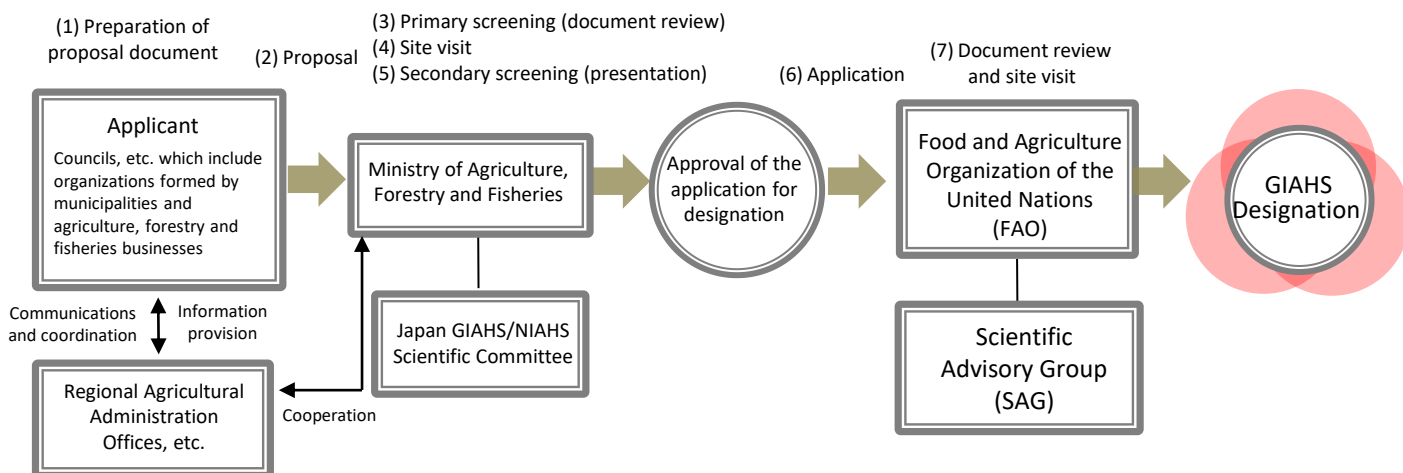
Countries	Name of sites/systems	Year	Countries	Name of sites/systems	Year
Japan	1 Noto's Satoyama and Satoumi	2011	China	40 Traditional Mulberry System in Xiajin's Ancient Yellow River Course	2018
	2 Sado's Satoyama in Harmony with Japanese Crested Ibis	2011		41 Rice Terraces System in Southern Mountainous and Hilly Areas, China	2018
	3 Managing Aso Grasslands for Sustainable Agriculture	2013		42 Shexian Dryland Stone Terraced System	2022
	4 Traditional Tea-grass Integrated System in Shizuoka	2013		43 Anxi Tieguaoyin Tea Culture System	2022
	5 Kunisaki Peninsula Usa Integrated Forestry, Agriculture and Fisheries System	2013		44 Ar Horqin Grassland Nomadic System in Inner Mongolia	2022
	6 Ayu of the Nagara River System	2015		45 Qingyuan Forest-Mushroom Co-culture System in Zhejiang Province	2022
	7 Minabe-Tanabe Ume System	2015	Bangladesh	46 Floating Garden Agricultural Practices	2015
	8 Takachiogo-Shiibayama Mountainous Agriculture and Forestry System	2015	Philippines	47 Ifugao Rice Terraces	2011
	9 Osaki Kodo's Traditional Water Management System for Sustainable Paddy Agriculture	2017	UAE	48 Al Ain and Liwa Historical Date Palm Oases	2015
	10 Nishi-Awa Steep Slope Land Agriculture System	2018	Iran	49 Qanat Irrigated Agricultural Heritage Systems, Kashan	2014
	11 Traditional WASABI Cultivation in Shizuoka	2018		50 Grape Production System in Jowzan Valley	2018
	12 Biwa Lake to land integrated system	2022		51 Qanat-based Saffron Farming System in Gonabad	2018
	13 Fruit Cultivation System in Kyoutou Region, Yamanashi	2022		52 Estahban Rainfed Fig Orchards Heritage System, Fars Province	2023
	14 Integrated Farming System for Harmonizing People and Cattle in the Mikata District	2023	Italy	53 Olive groves of the slopes between Assisi and Spoleto	2018
	15 Fallen Leaves Compost Agroforestry System in Musashino Upland, in the peri-urban area of Tokyo	2023		54 Soave Traditional Vineyards	2018
India	16 Saffron Heritage of Kashmir	2011	Spain	55 Malaga Raisin Production System in La Axarquía	2017
	17 Koraput Traditional Agriculture	2012		56 Salt production system of Añana	2017
	18 Kuttanad Below Sea Level Farming System	2013		57 The Agricultural System Ancient Olive Trees Territorio Sénia	2018
Republic of Korea	19 Traditional Gudeuljang Irrigated Rice Terraces in Cheongsando	2014		58 Historical Irrigation System at l'Horta de València	2019
	20 Jeju Batdam Agricultural System	2014		59 Agrosilvopastoral system Mountains of León	2022
	21 Traditional Hadong Tea Agrosystem in Hwagae-myeon	2017	Portugal	60 Barroso Agro-Sylvo-Pastral System	2018
	22 Geumsan Traditional Ginseng Agricultural System	2018	Algeria	61 Ghout System (Oases of the Maghreb)	2011
	23 Damyang Bamboo Field Agriculture System	2020	Egypt	62 Dates Production System in Siwa Oasis	2016
	24 The Sonteu (hand net) Fishery System for gathering Marsh Clam in Seomjingang River	2023	Kenya	63 Oldonyonokie/Olkeri Maasai Pastoralist Heritage	2011
Sri Lanka	25 The Cascaded Tank-Village System in the Dry Zone of Sri Lanka	2017	Tanzania	64 Engaresero Maasai Pastoralist Heritage Area	2011
Thailand	26 Thale Noi Wetland Pastoral Buffalo Agro-ecosystem	2022		65 Shimbue Juu Kihamba Agro-forestry Heritage Site	2011
China	27 Rice Fish Culture	2005	Tunisia	66 Gafsa Oases (Oases of the Maghreb)	2011
	28 Wannian Traditional Rice Culture	2010		67 Hanging gardens from Djebba El Olia	2020
	29 Hani Rice Terraces	2010		68 Ramli agricultural system in the lagoons of Ghar El Melh	2020
	30 Dong's Rice Fish Duck System	2011	Morocco	69 Oases System in Atlas Mountains (Oases of the Maghreb)	2011
	31 Pu'er Traditional Tea Agrosystem	2012		70 Argan-based agro-sylvo-pastoral system within the area of Ait Souab-Ait and Mansour	2018
	32 Aohan Dryland Farming System	2012		71 The ksour of Figuig: oasis and pastoral culture around the social management of water and land	2022
	33 Kuajishan Ancient Chinese Torreya	2013	Ecuador	72 Amazonian Chakra, a traditional agroforestry system managed by Indigenous communities in Napo province, Ecuador	2023
	34 Urban Agricultural Heritage – Xuanhua Grape Garden	2013		73 Andean chakra: an ancestral agricultural system of Kichwas Cotacachi Communities, Ecuador	2023
	35 Jiaxian Traditional Chinese Date Gardens	2014	Chile	74 Chiloé Agriculture	2011
	36 Xinghua Duotian Agrosystem	2014	Brazil	75 Traditional Agricultural System in the Southern Espinhaço Range, Minas Gerais	2020
	37 Fuzhou Jasmine and Tea Culture System	2014	Peru	76 Andean Agriculture	2011
	38 Diebu Zhagana Agriculture-Forestry-Animal Husbandry Composite System	2017	Mexico	77 Chinampa Agricultural System in Mexico City	2017
	39 Zhejiang Huzhou Mulberry-dyke & Fish-pond System	2017		78 Ich Kool: Mayan milpa of the Yucatan peninsula, Mexico	2022

Criteria of GIAHS designation

The proposed GIAHS site will be assessed based on the following **five criteria** and an **Action Plan**.

1. Food and livelihood security	2. Agro-biodiversity	3. Local and Traditional Knowledge Systems	4. Cultures, Value systems and Social Organisations	5. Landscapes and Seascapes Features
---------------------------------	----------------------	--	---	--------------------------------------

Procedure of GIAHS designation in Japan



GIAHS designated sites in Japan

In Japan, there are 15 sites designated as GIAHS (as of October 2023). The value of Japan's agriculture, forestry and fisheries, and their variety and regional characteristics, have been recognized internationally.

Designated in June 2011

Sado City in Niigata Prefecture
Noto Peninsula in Ishikawa Prefecture

Designated in May 2013

Kakegawa and surrounding region in Shizuoka Prefecture
Aso region in Kumamoto Prefecture
Kunisaki Peninsula Usa area in Oita Prefecture

Designated in December 2015

The upper and middle basin of the Nagara River in Gifu Prefecture
Minabe-Tanabe region in Wakayama Prefecture
Takachihogo-Shiibayama region in Miyazaki Prefecture

Designated in December 2017 and March 2018

Osaki region in Miyagi prefecture
Shizuoka Wasabi Cultivating region in Shizuoka Prefecture
Nishi-Awa Area in Tokushima Prefecture

Designated in July 2022

Kyoutou region in Yamanashi Prefecture
Lake Biwa region in Shiga Prefecture

Designated in July 2023

Mikata district in Hyogo Prefecture
Musashino region in Saitama Prefecture

