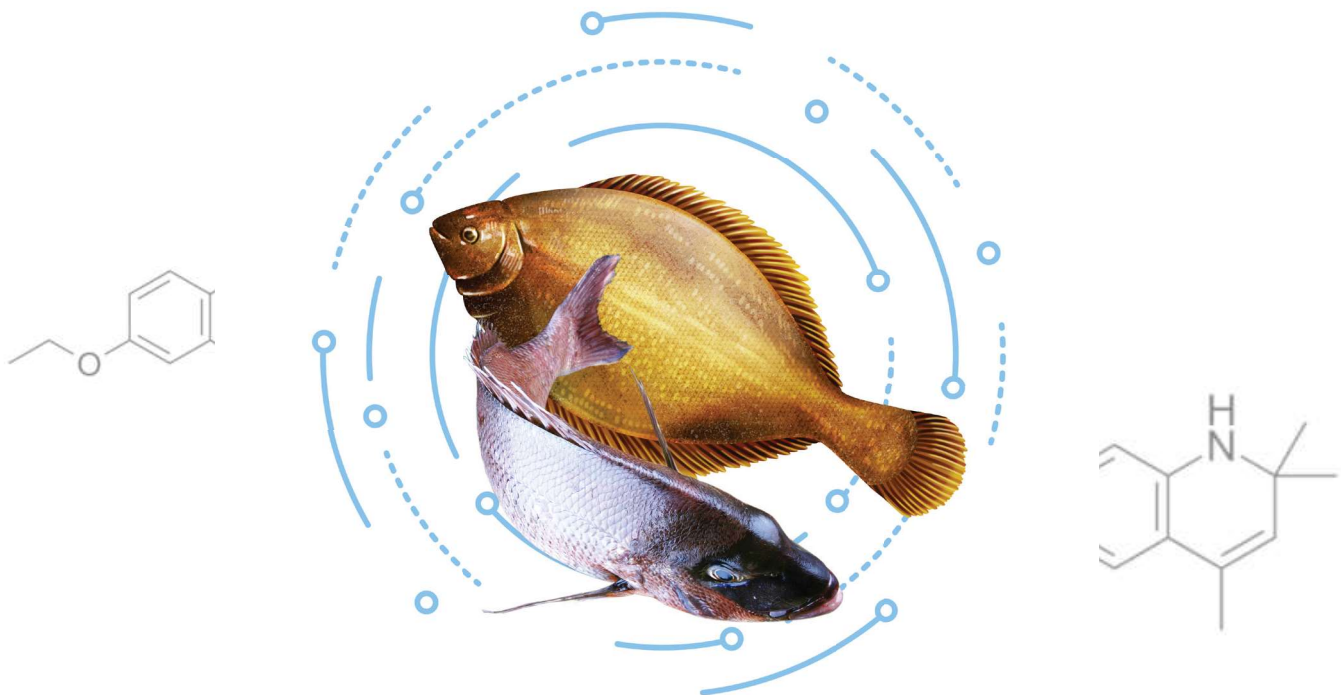


Ethoxyquin-free feed must be used.

From July 2022, you will be subject to

“The fishery products are delayed to be placed on the market”
when fish are detected above the standard limit(1.0mg/kg).



Regulations relevant to residue limit standards for Ethoxyquin were revised

Ethoxyquin limit

fish: less than or equal to 1.0mg/kg
crustacean: less than or equal to 0.2mg/kg

Period during which the standard is not applied (Fish Only)

from 1 July 2021 to 30 June 2022

Species applicable

fish

(Residue limit of less than or equal to 0.2mg/kg is applied to crustacean)

Revisions to Standards & Specifications for Feed

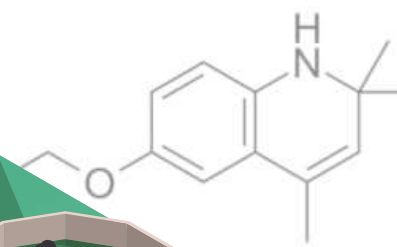
Before Revision

Within 300g for aquatic animals /
1 ton of formula feed

After Revision

Within 300g for aquatic animals / 1 ton of formula feed

※ Ethoxyquin is banned from mixing for aquatic animals' formula feed. However, it is considered that Ethoxyquin is not artificially mixed when it accounts for less than 0.002% of the total amount.



01 How to Manage Feed for Aquaculture Products

- Recommended to use Ethoxyquin-free feed to produce and supply safe fishery products
- Ethoxyquin-free feed should be used 90 days prior to placing on the market

02 Veterinary drugs (antibiotics) must be used strictly following veterinarians' instructions so as to prevent any overuse/misuse of the drugs

03 Any drugs for which its source cannot be identified or that are not allowed for use are banned from using.

04 Asking for cooperation for safety control by NFQS

Please call the number as below for more details about safety control for production-stage fishery products.

Busan regional office	051-602-6051	:	Gangreung regional office	033-660-7233
Incheon regional office	033-880-3826		Jeonju regional office	063-276-8524
Incheon Airport regional office	032-740-2994		Mokpo regional office	061-288-7308
Pohang regional office	054-230-2300		Wando regional office	061-550-0674
Seoul regional office	02-2660-9632		Yeosu regional office	061-650-0532
Pyeongtaek regional office	031-8053-7721		Jeju regional office	064-728-6310
Janghang regional office	041-956-0028		Tongyeong regional office	055-640-3121