

Main Export Countries	Singapore, United States etc.	Export Volume	1,600t (2023)
Source Region	Ibaraki Prefecture: Hitachiomiya City, Hitachiota City, Hitachinaka City, Naka City, Mito City, Kasama City, Higashi-Ibaraki District: Shirosato Town, Ibaraki Town, Namegata City, Tsukuba City, Tsukuba Mirai City, Ryugasaki City, Inashiki City, Ishioka City, Inashiki District: Kawachi Town, Sakuragawa City, Chikusei City, Shimotsuma City, Joso City, Bando City, Yuki District: Yachiyo Town, Sarushima District: Goka Town.		

Overview of Export Production Areas

To stabilize the domestic rice supply and improve the income of rice farmers, and in response to increasing demand for Japanese rice overseas, a group of 8 producers began export activities in fiscal year 2016. They collaborate with rice-producing areas in Ibaraki Prefecture (currently about 110 producers) for export efforts.

Actions for Compliance with Export Regulations

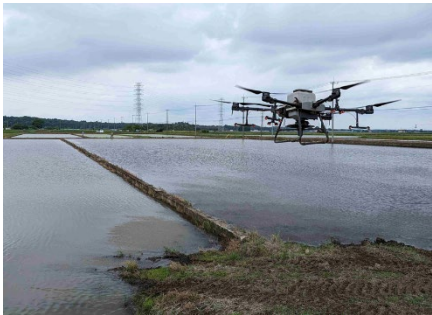
To reduce costs and secure sufficient quantities to meet local demand, they are advancing the use of high-yield varieties and smart agricultural machinery such as drones. They have established a rice milling plant and temperature-controlled warehouse using subsidy projects, obtained FSSC22000 certification required by European and American export destinations, and are progressing in the production and sale of rice that meets quality and food safety standards.

Promotional Points

They are actively expanding into regions where Japanese rice is not yet widespread (e.g., Mexico, Croatia, Israel) and can directly export to these areas.



Local Sales Promotion Activities
Conducted by Producers Traveling Abroad



Seeding Operations Using Drones