

平成 27 年 稲作期間の気象データ
大臣官房統計部

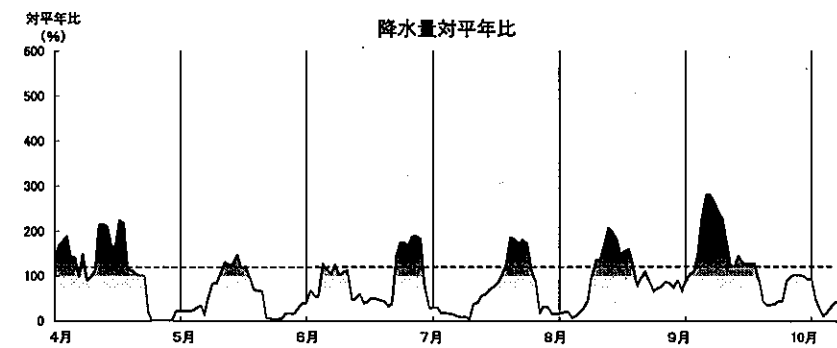
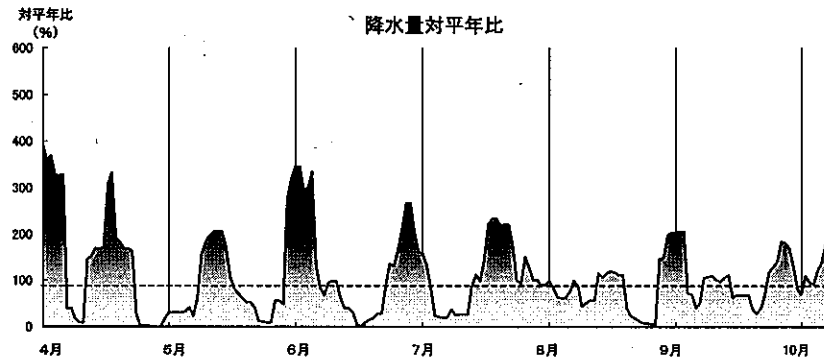
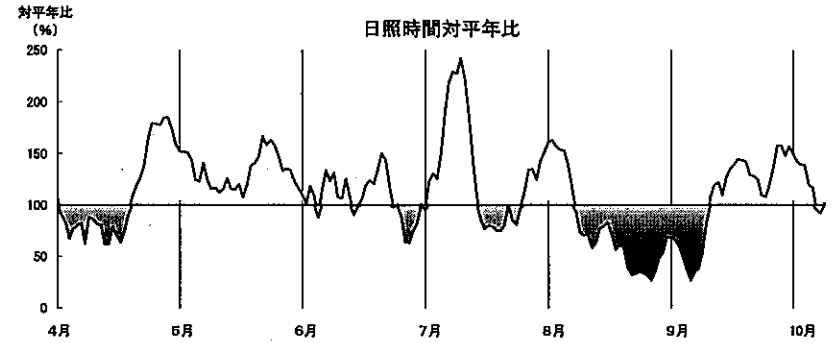
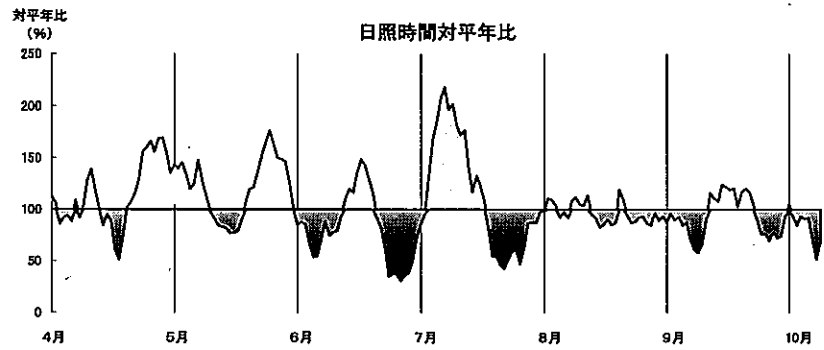
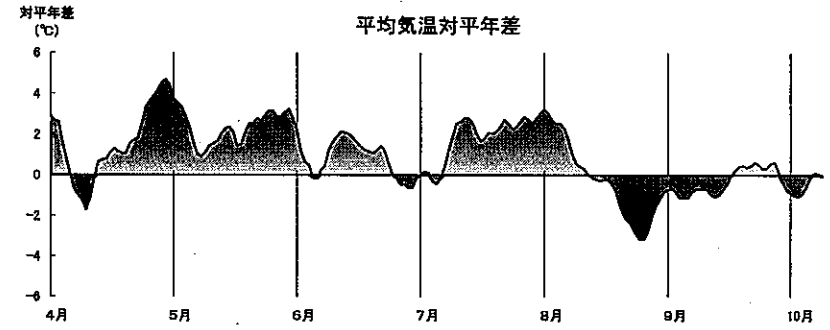
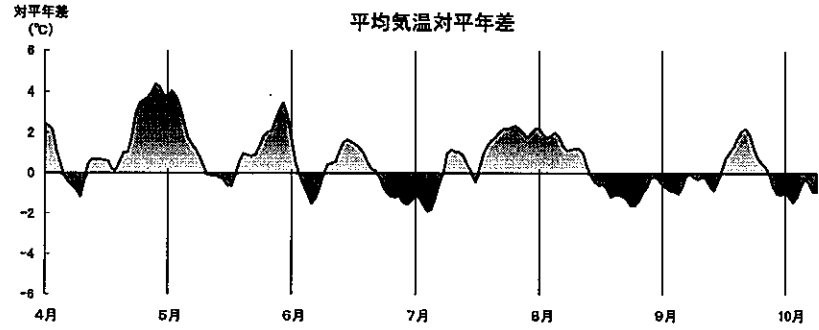
平成 28 年 3 月 15 日

農林水産省

1 平成27年 稲作期間の気象データ (地域別)

北海道

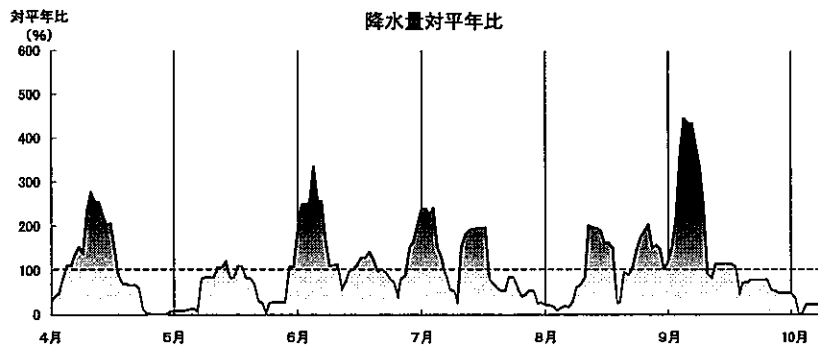
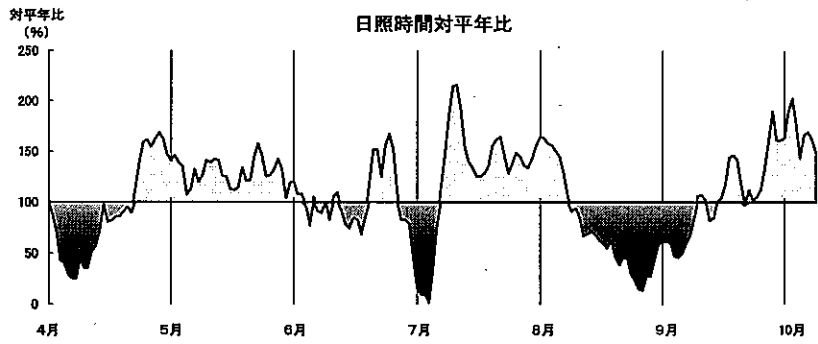
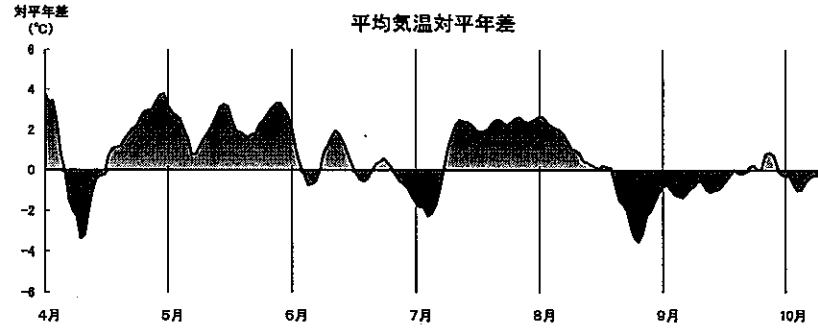
東北



平均気温、日照時間、降水量共に、水稲作付地域におけるアメダス地点データの7日移動平均

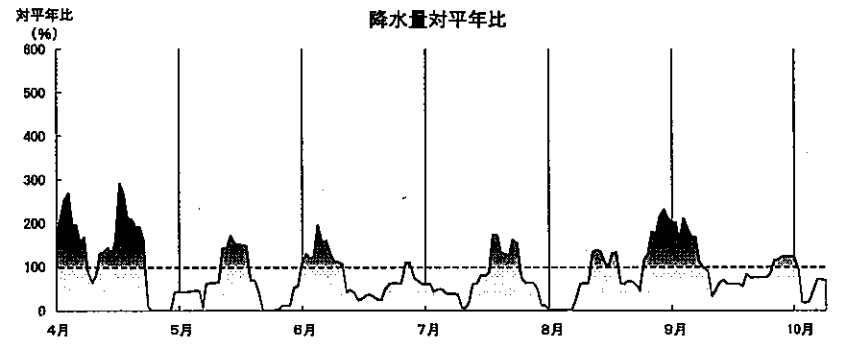
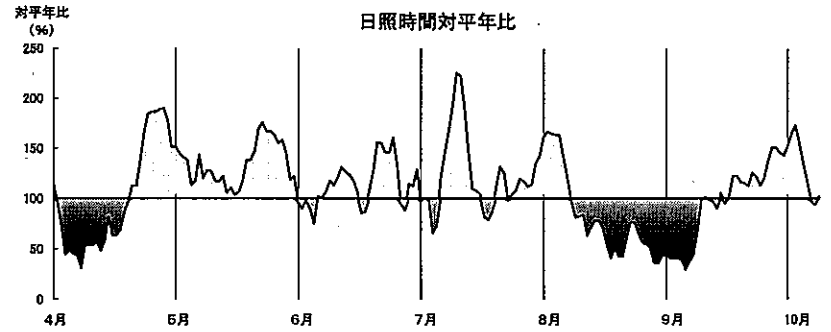
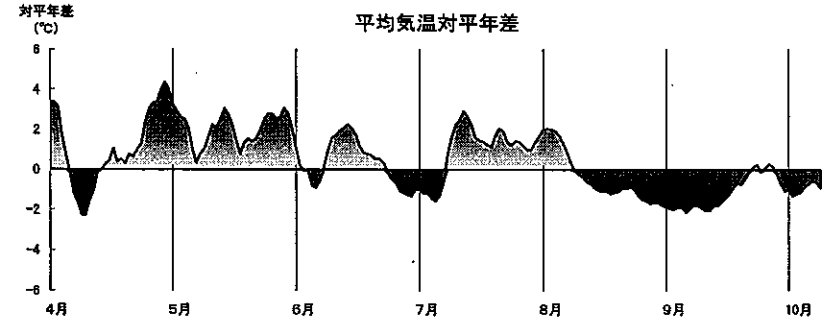
平均気温、日照時間、降水量共に、水稲作付地域におけるアメダス地点データの7日移動平均

関 東



平均気温、日照時間、降水量共に、水稲作付地域におけるアメダス地点データの7日移動平均

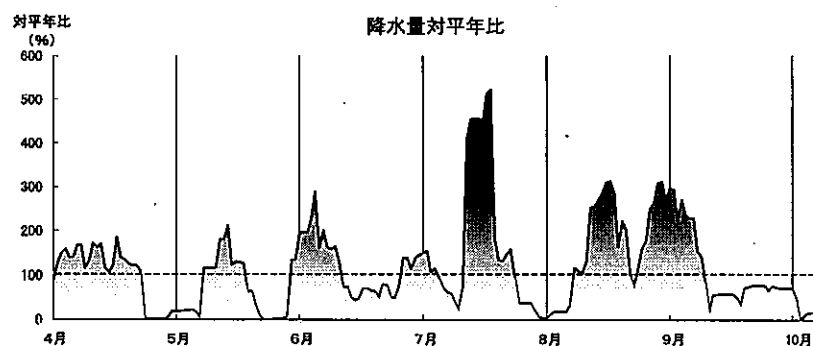
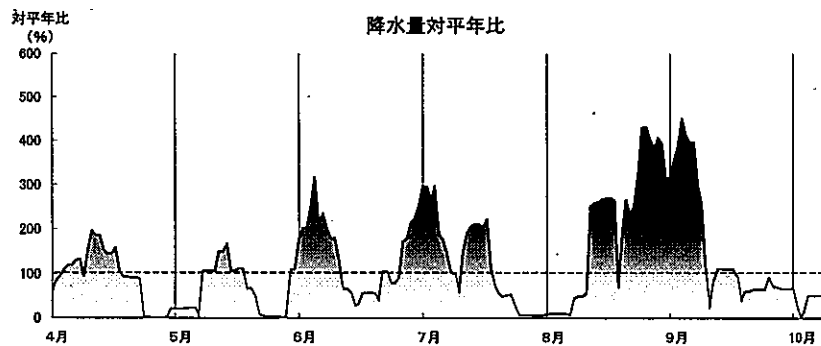
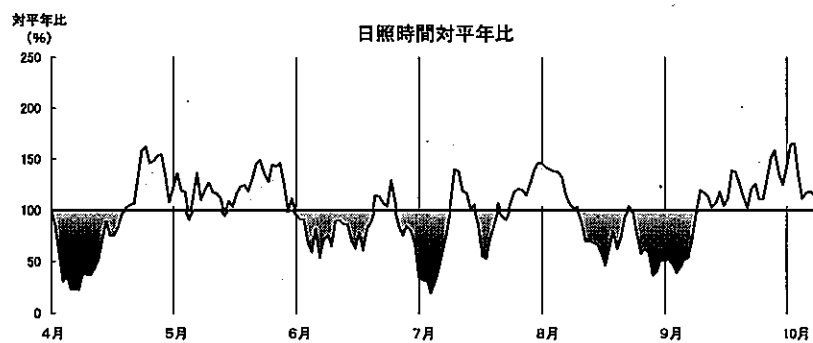
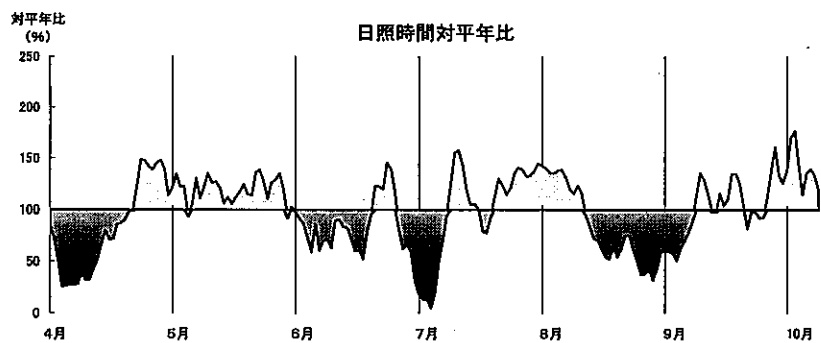
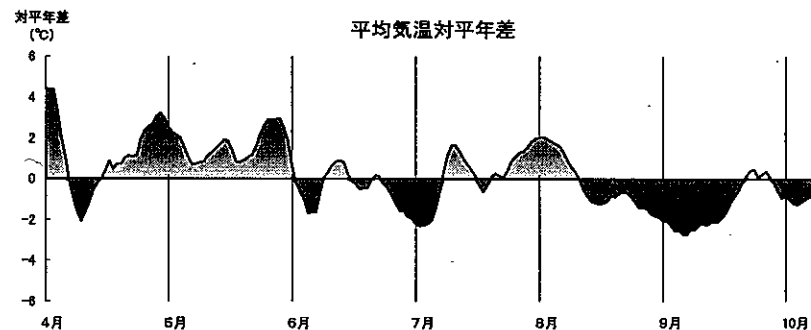
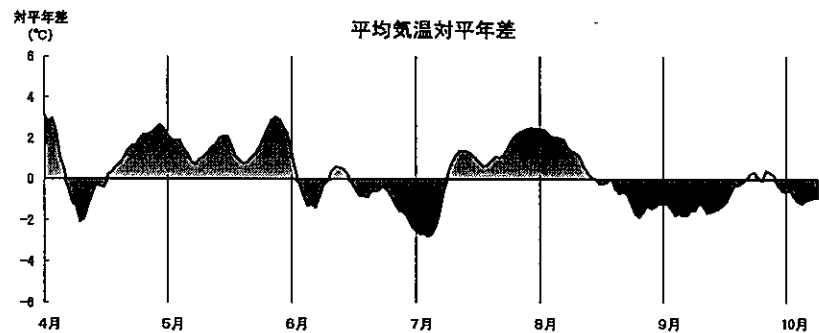
北 陸



平均気温、日照時間、降水量共に、水稲作付地域におけるアメダス地点データの7日移動平均

東 海

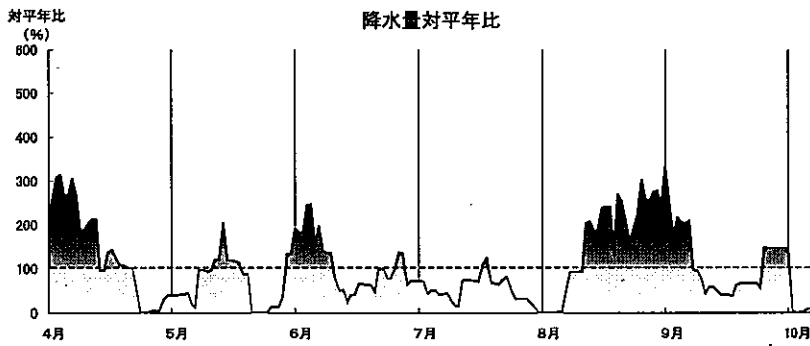
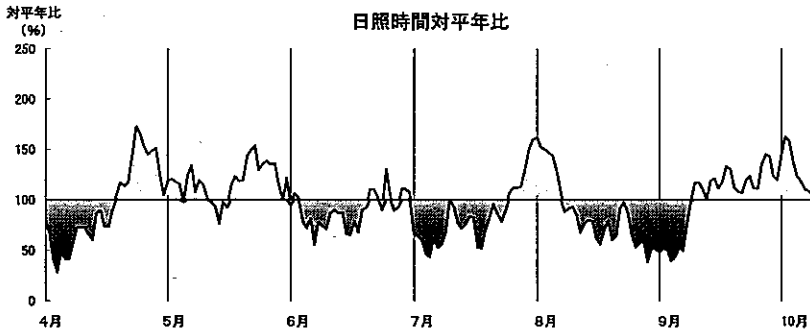
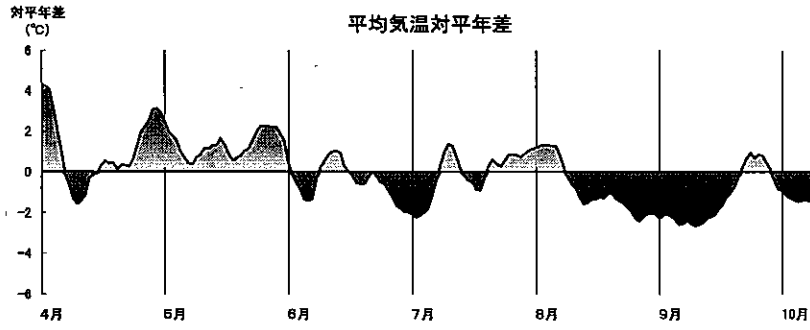
近 畿



平均気温、日照時間、降水量共に、水稲作付地域におけるアメダス地点データの7日移動平均

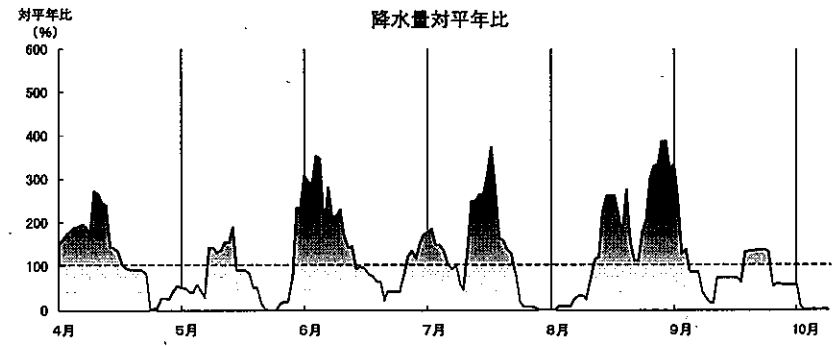
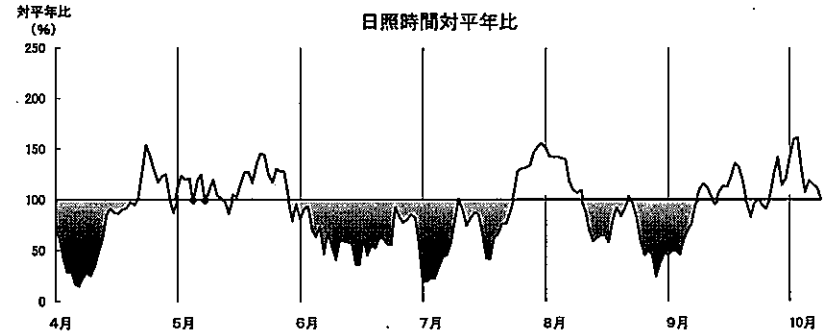
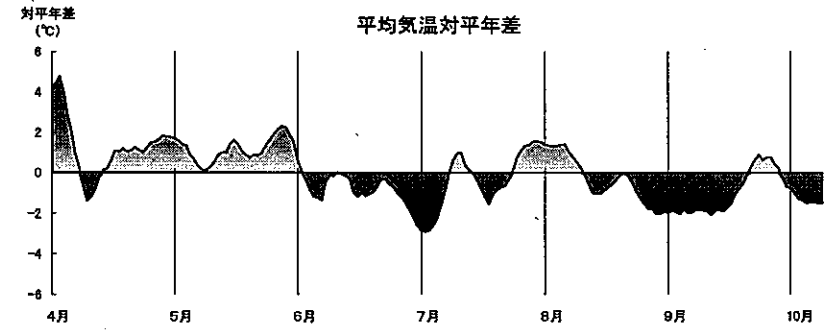
平均気温、日照時間、降水量共に、水稲作付地域におけるアメダス地点データの7日移動平均

中 国



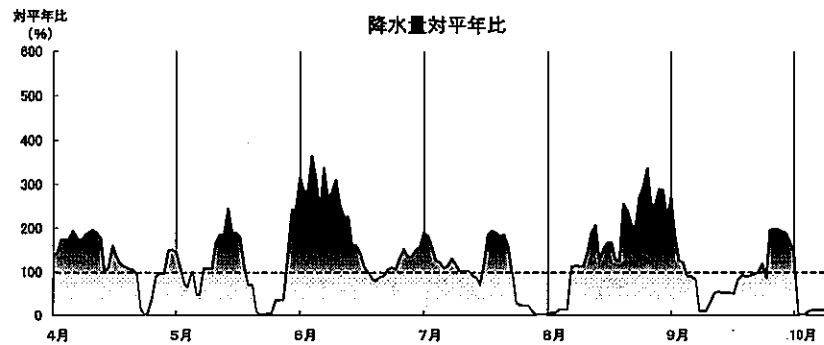
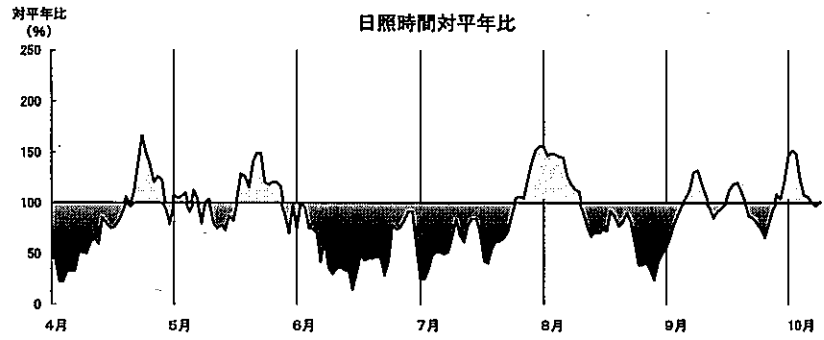
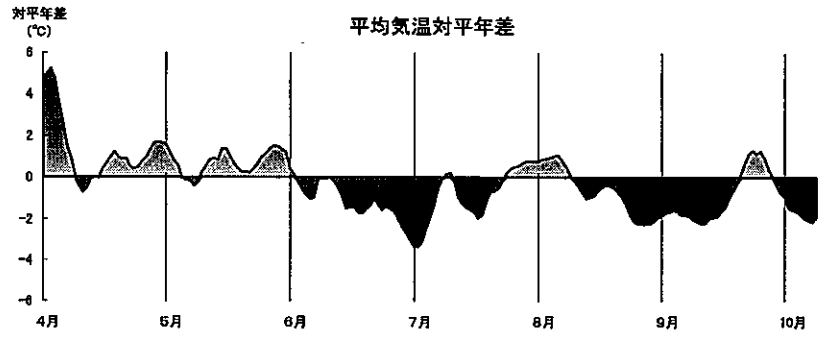
平均気温、日照時間、降水量共に、水稲作付地域におけるアメダス地点データの7日移動平均

四 国



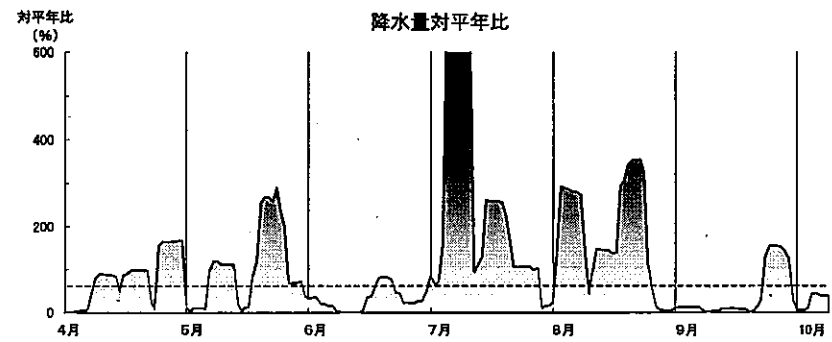
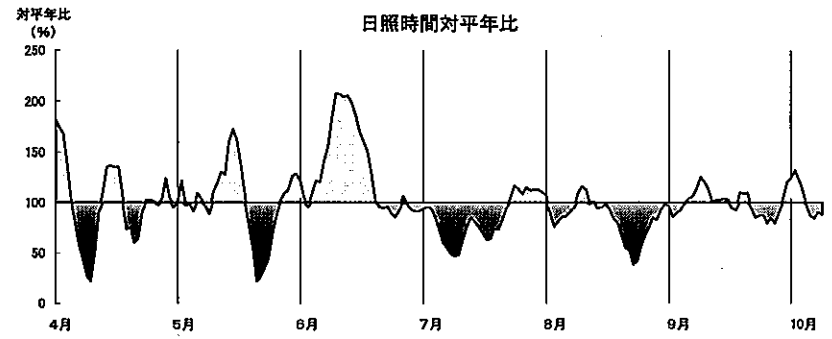
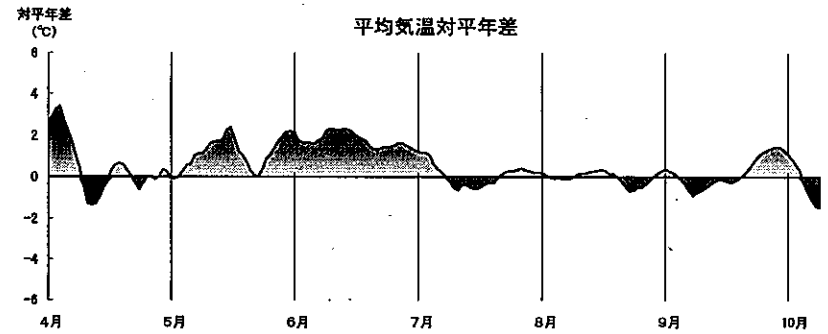
平均気温、日照時間、降水量共に、水稲作付地域におけるアメダス地点データの7日移動平均

九州



平均気温、日照時間、降水量共に、水稲作付地域におけるアメダス地点データの7日移動平均

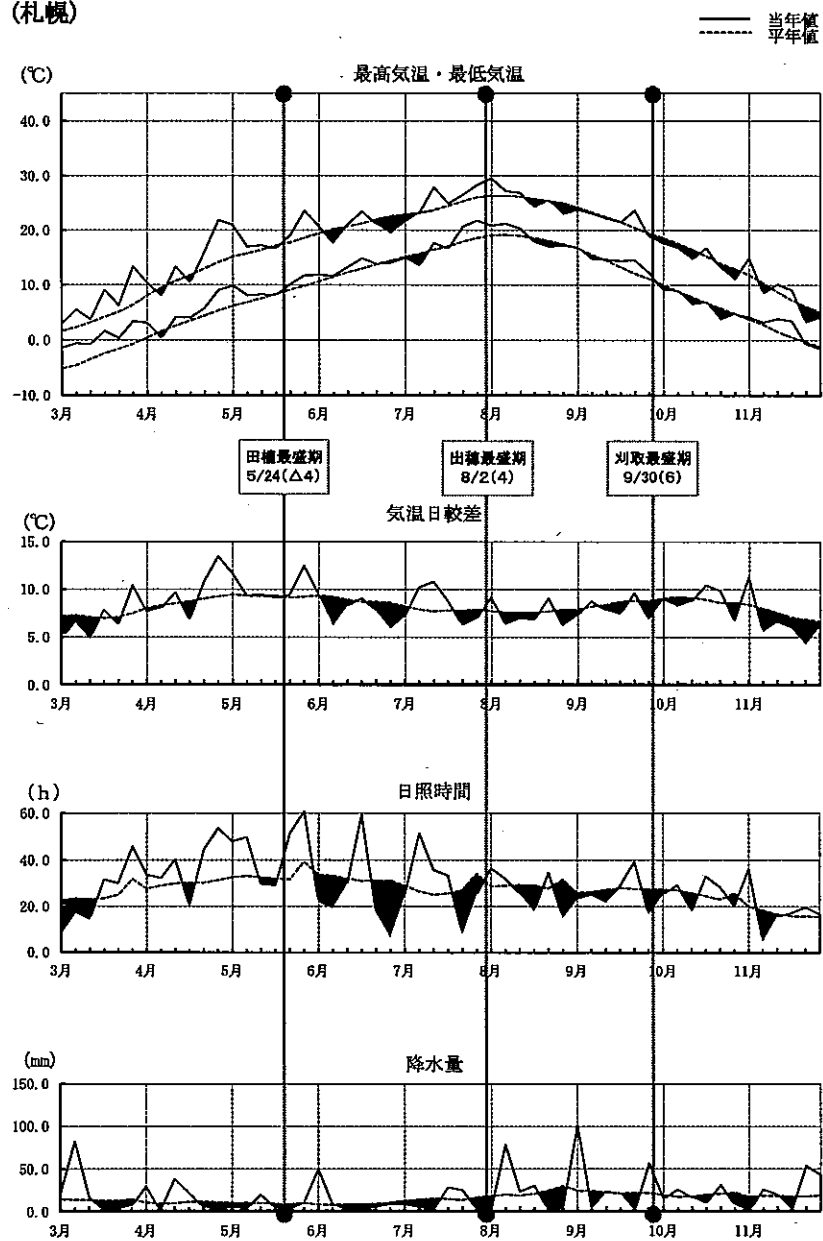
沖縄



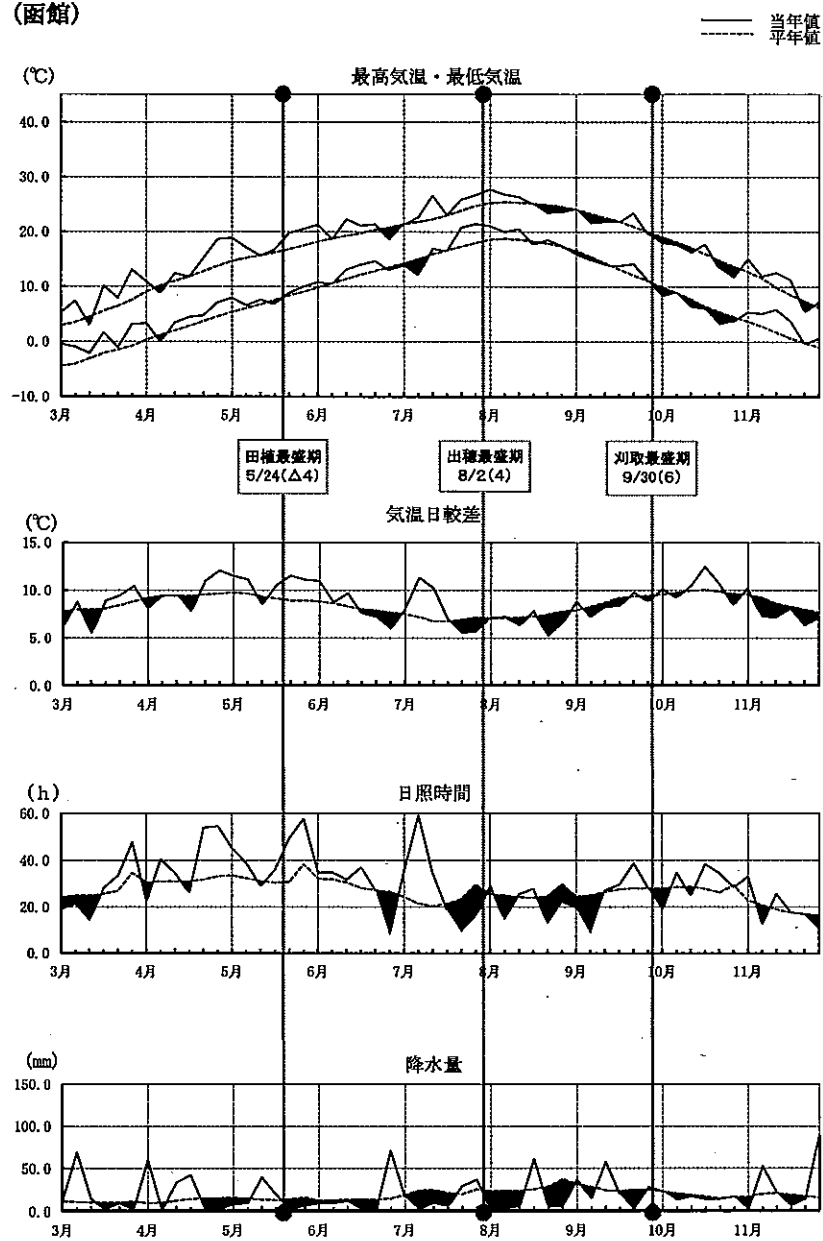
平均気温、日照時間、降水量共に、水稲作付地域におけるアメダス地点データの7日移動平均

2 平成27年 半旬別気象グラフ (対平年差)

(札幌)

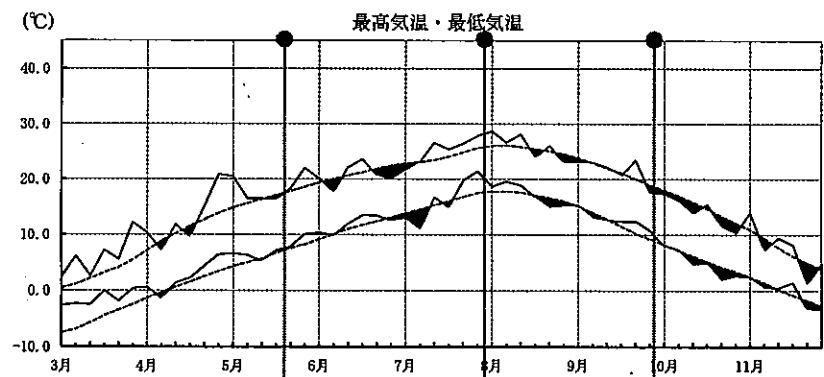


(函館)

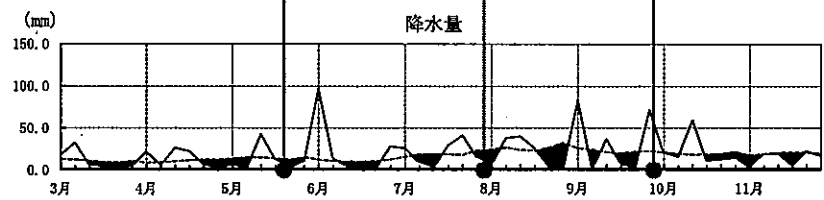
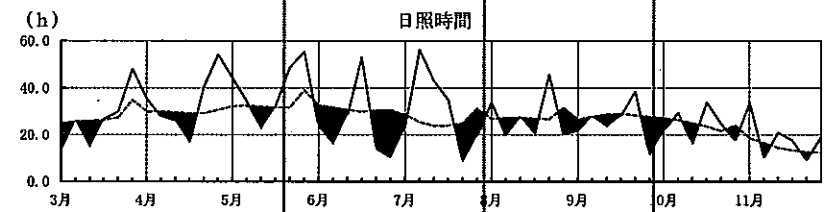
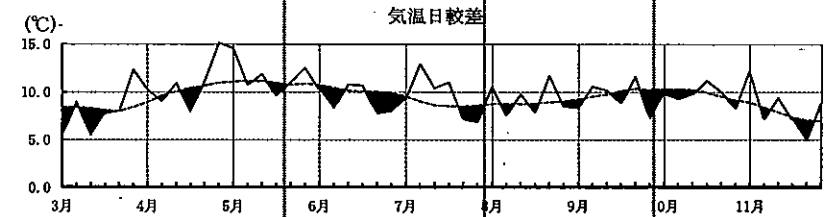


(岩見沢)

—— 当年値
----- 平年値

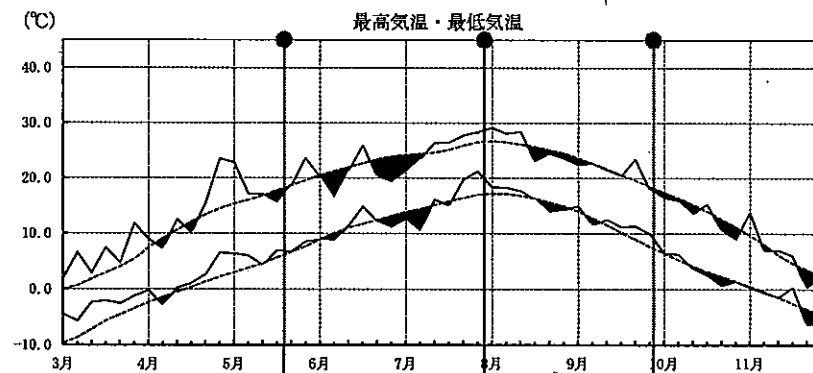


田植最盛期 5/24(△4)
出穂最盛期 8/2(4)
刈取最盛期 9/30(6)

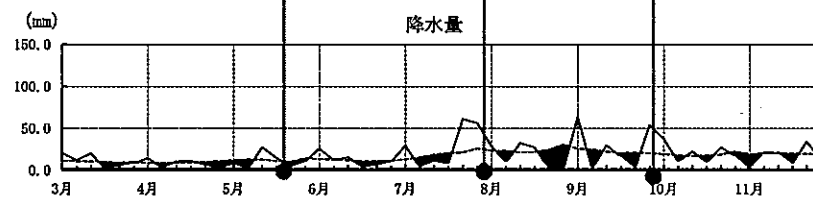
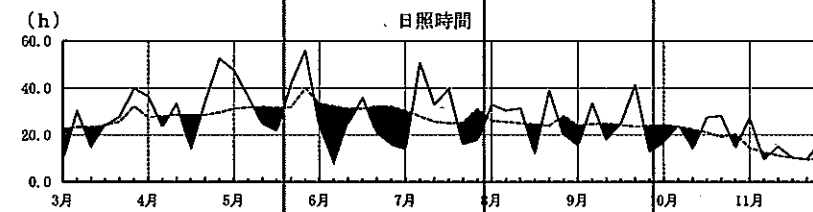
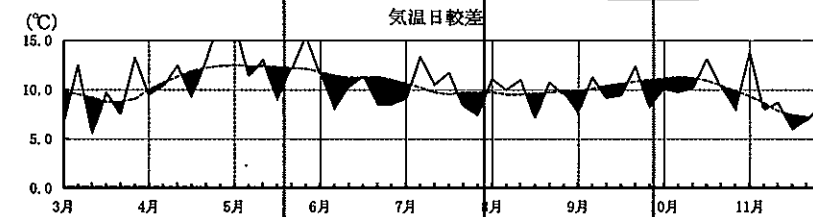


(旭川)

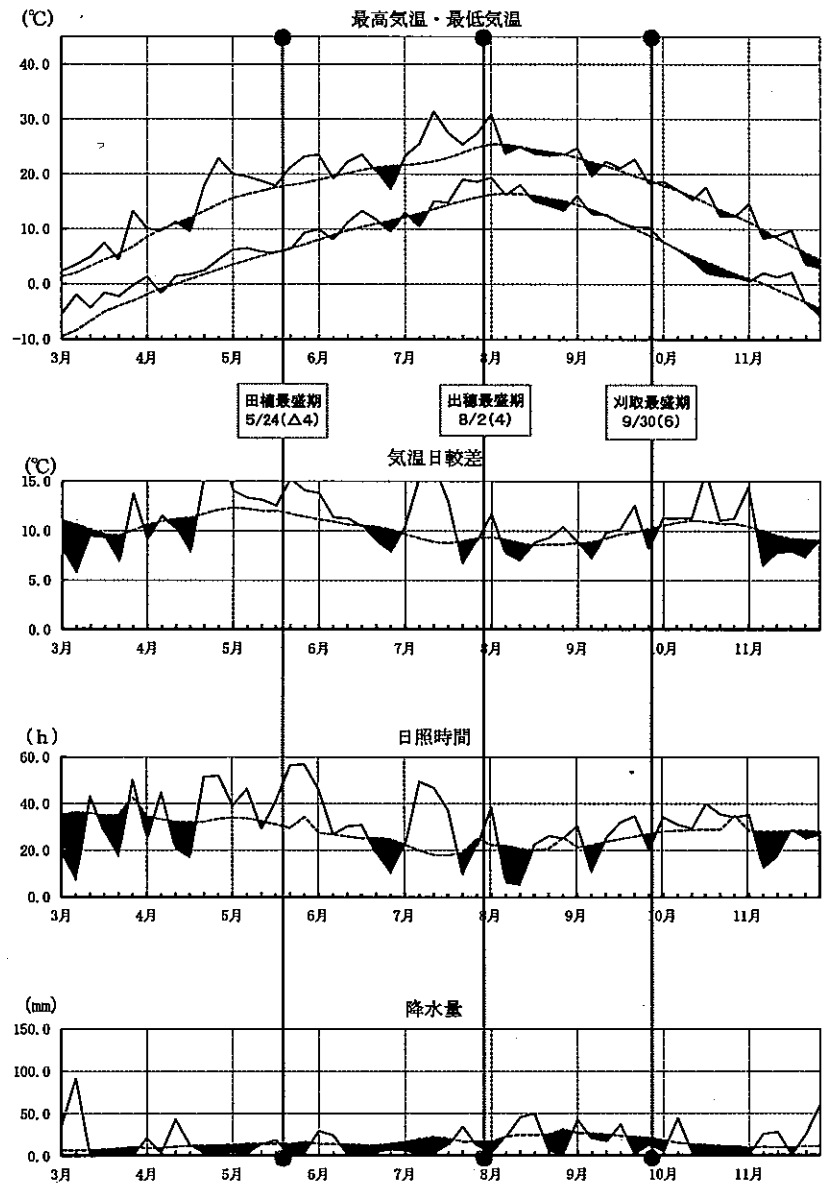
—— 当年値
----- 平年値



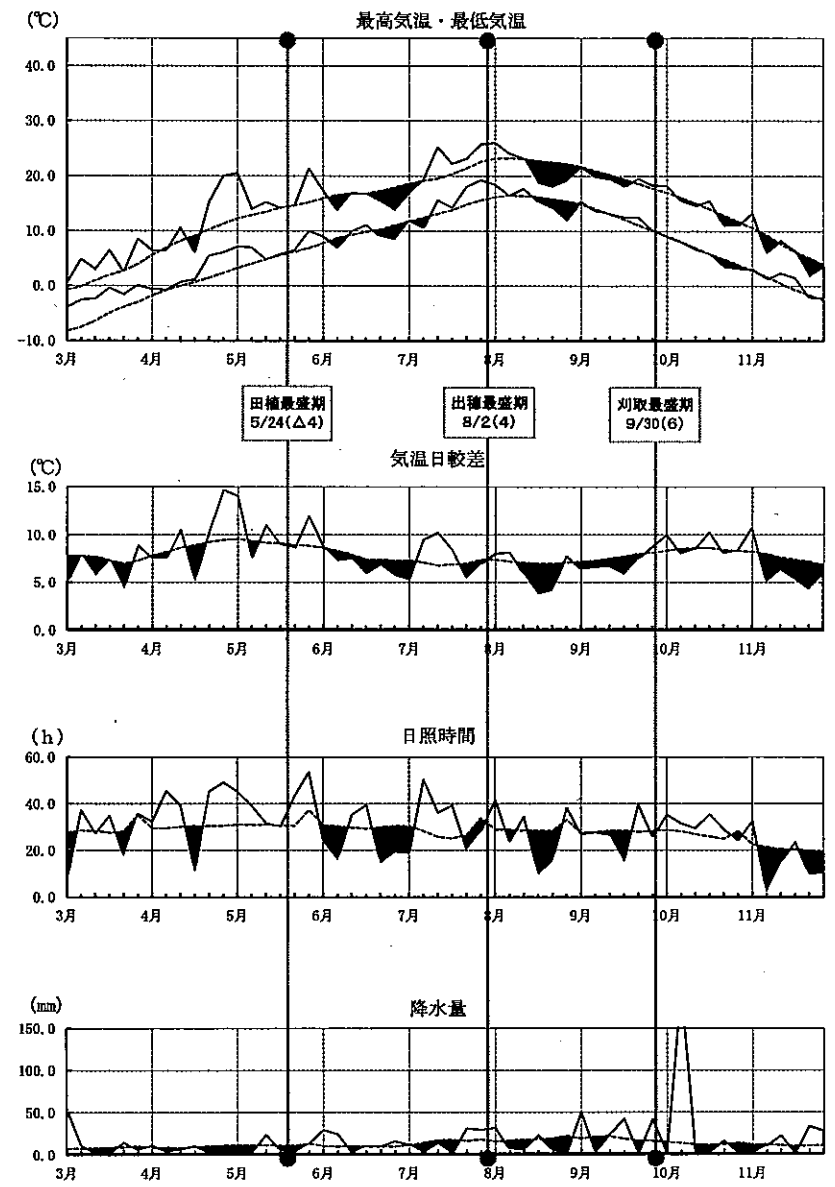
田植最盛期 5/24(△4)
出穂最盛期 8/2(4)
刈取最盛期 9/30(6)



(帯広)

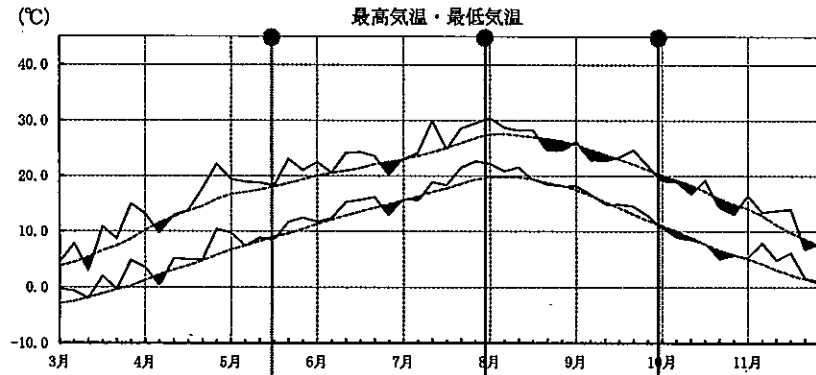


(網走)

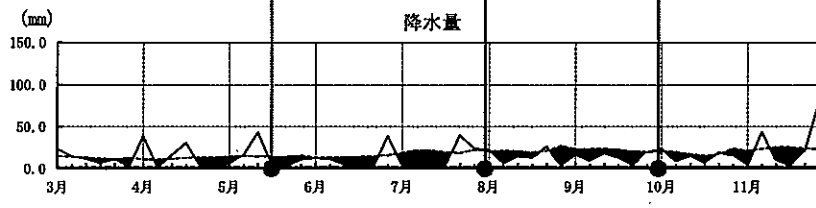
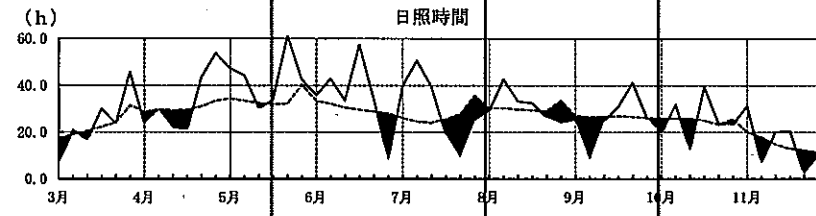
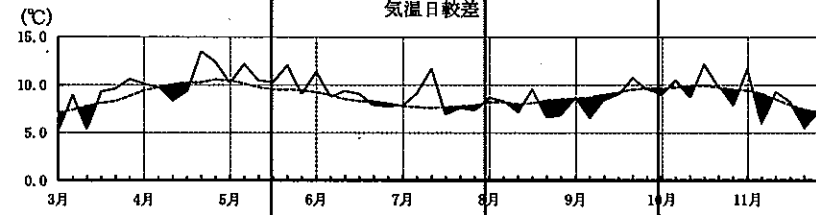


(青森)

—— 当年値
----- 平年値

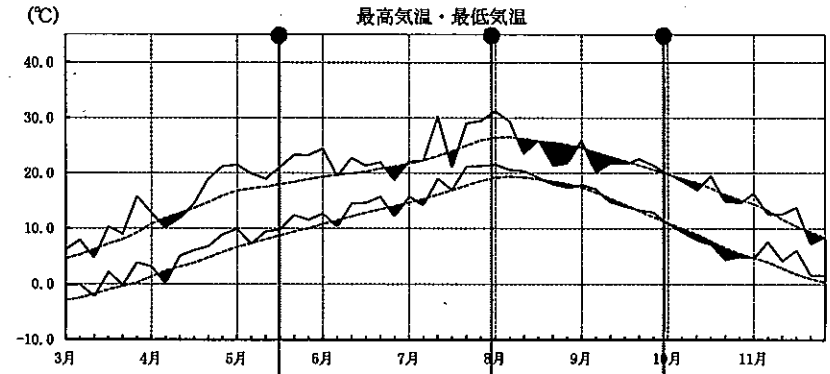


田植最盛期 5/20(△2)
出穂最盛期 8/3(△2)
刈取最盛期 10/2(2)

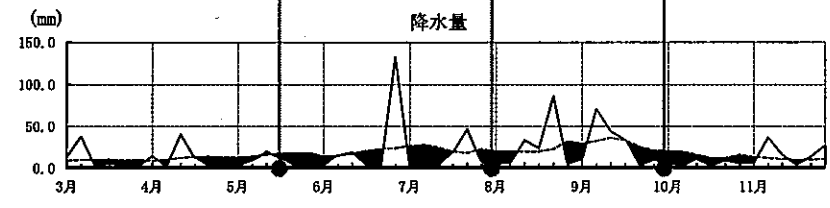
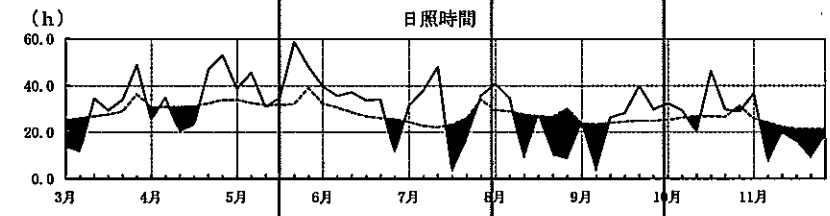
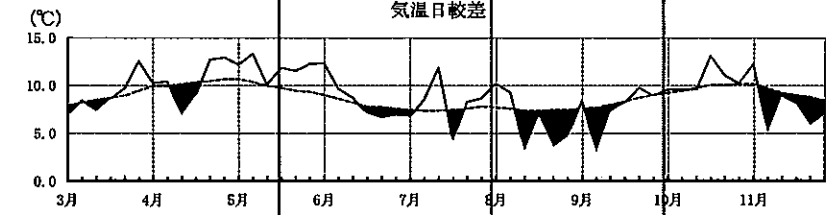


(八戸)

—— 当年値
----- 平年値

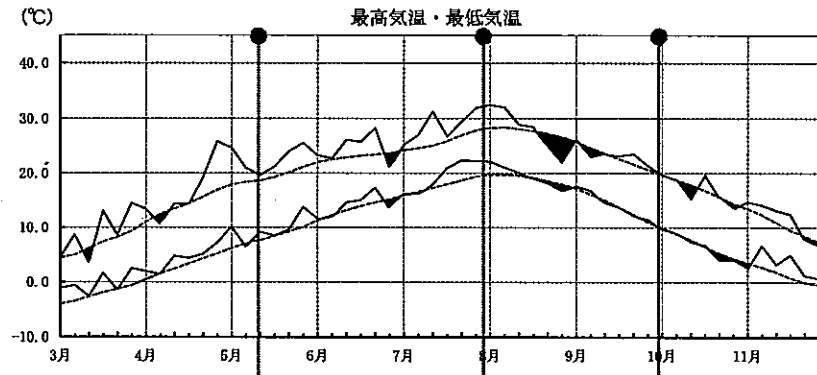


田植最盛期 5/20(△2)
出穂最盛期 8/3(△2)
刈取最盛期 10/2(2)

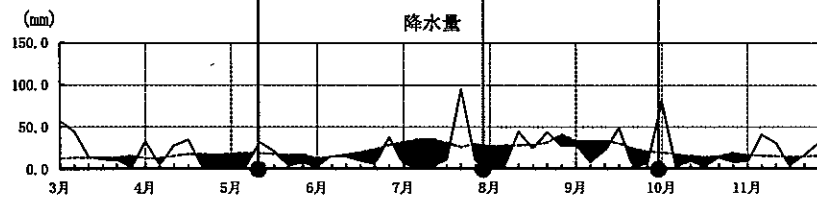
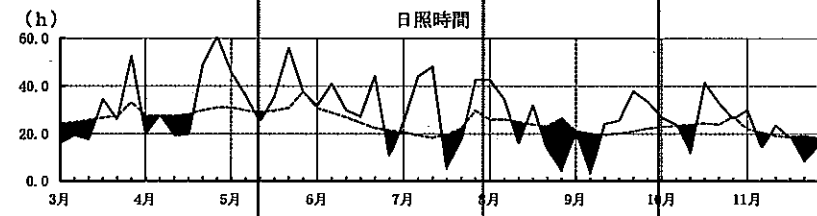
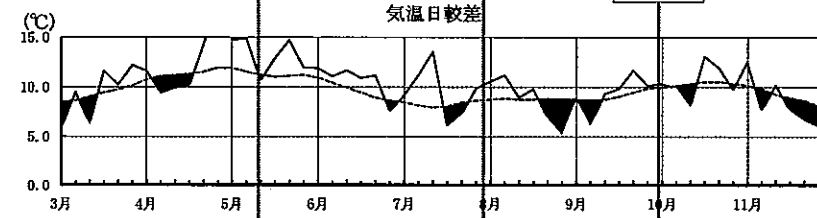


(盛岡)

—— 当年値
----- 平年値

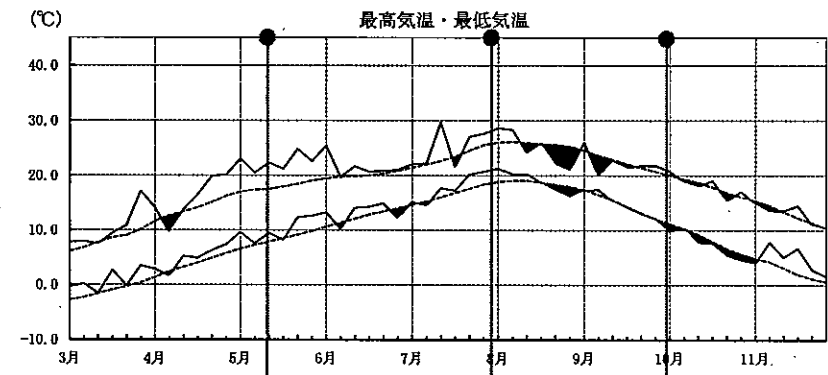


田植最盛期 5/15(△3)
 出穂最盛期 8/2(△4)
 刈取最盛期 10/3(1)

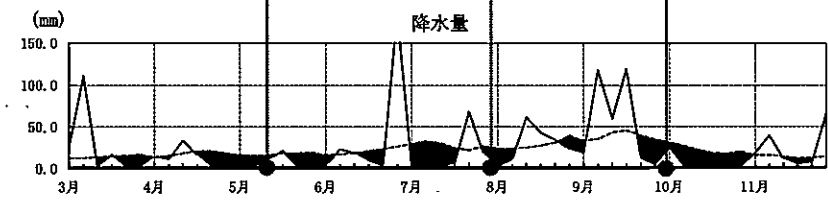
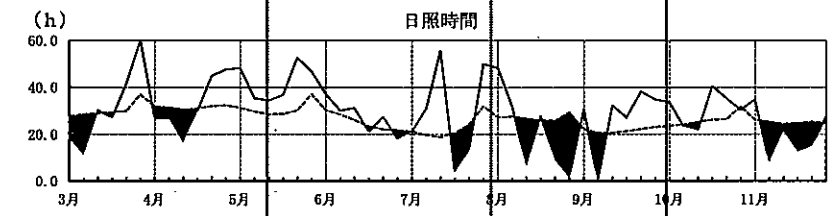
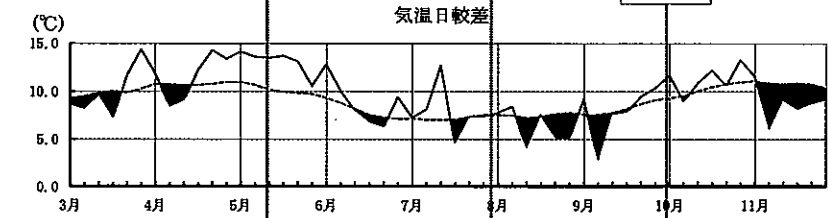


(宮古)

—— 当年値
----- 平年値

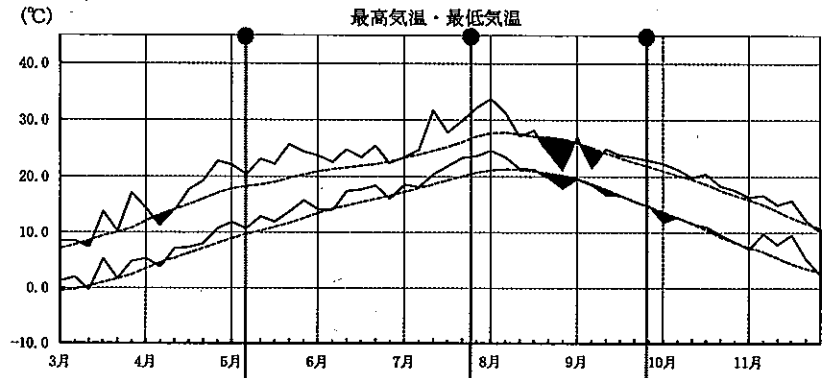


田植最盛期 5/15(△3)
 出穂最盛期 8/2(△4)
 刈取最盛期 10/3(1)

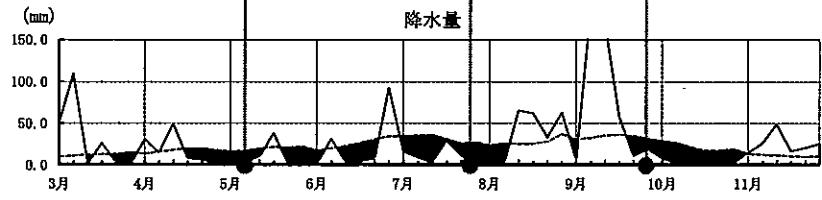
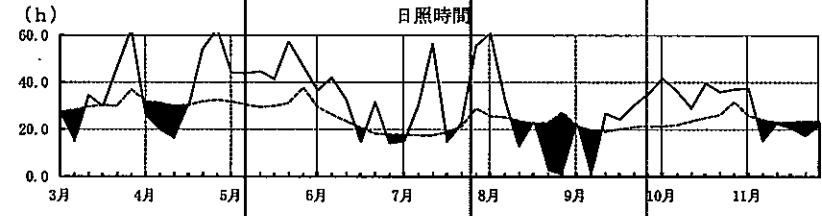
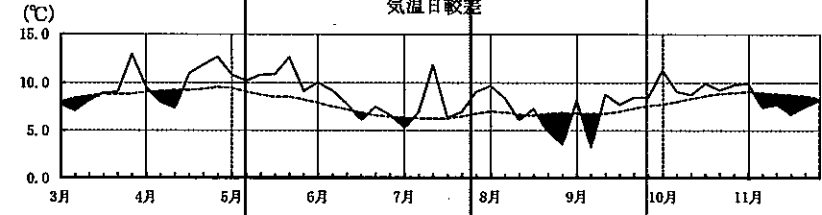


(仙台)

—— 当年値
----- 平年値

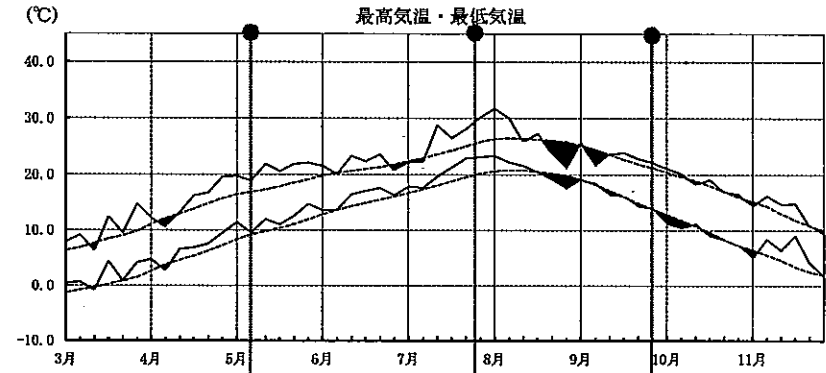


田植最盛期 5/10(Δ3)
出穂最盛期 7/29(Δ7)
刈取最盛期 9/29(Δ1)

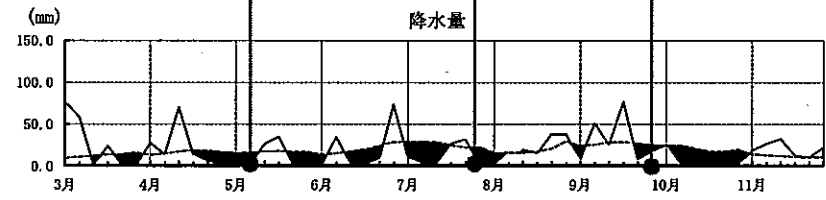
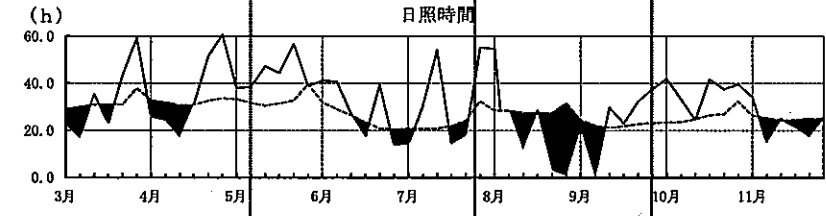
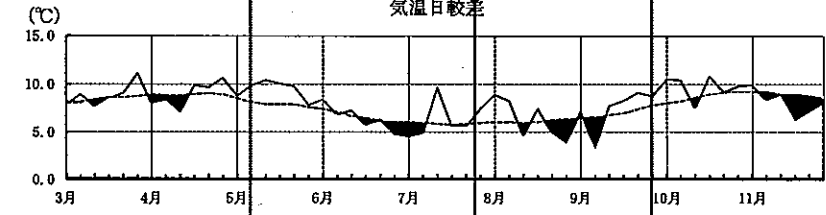


(石巻)

—— 当年値
----- 平年値

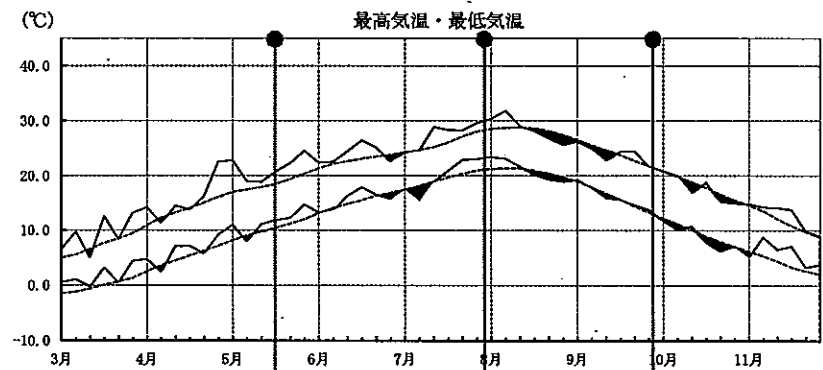


田植最盛期 5/10(Δ3)
出穂最盛期 7/29(Δ7)
刈取最盛期 9/29(Δ1)



(秋田)

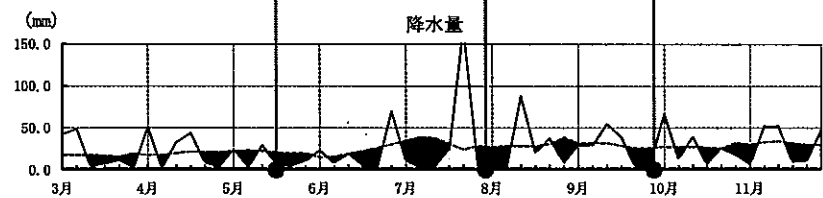
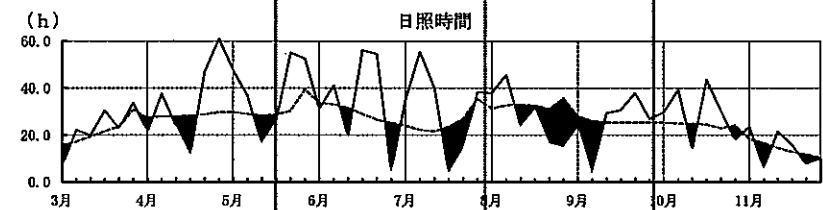
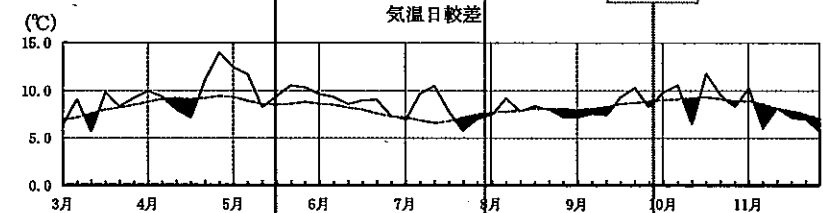
—— 当年値
----- 平年値



田植最盛期
5/21(Δ2)

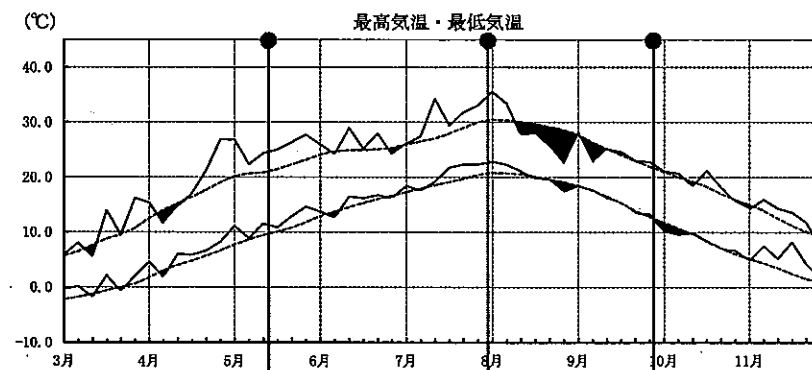
出穂最盛期
8/2(Δ2)

刈取最盛期
10/1(1)



(山形)

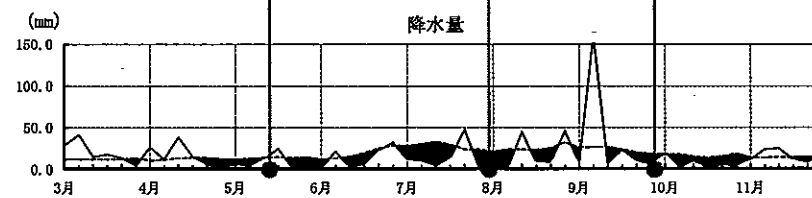
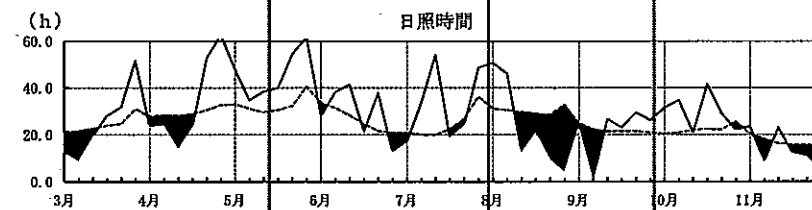
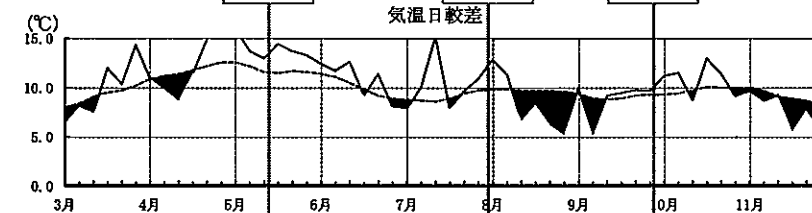
—— 当年値
----- 平年値



田植最盛期
5/18(Δ2)

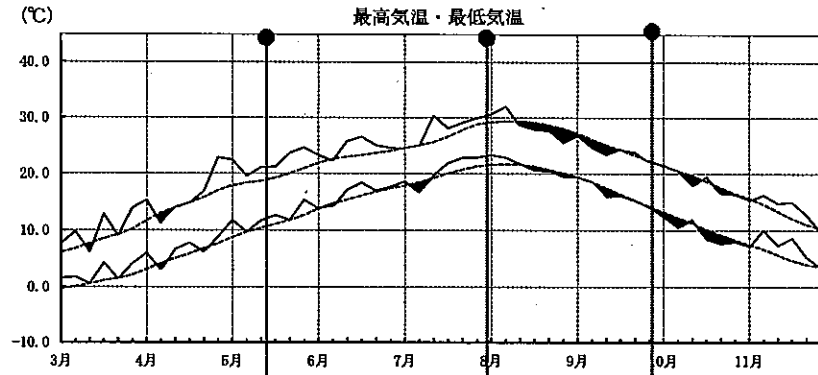
出穂最盛期
8/3(Δ3)

刈取最盛期
10/1(1)

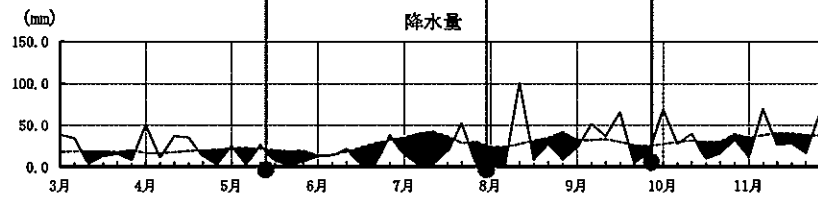
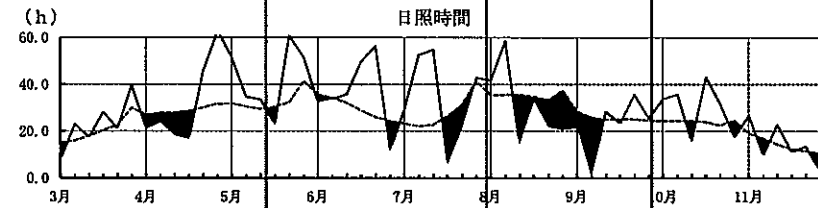
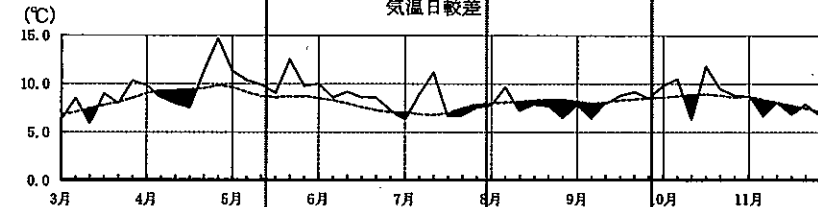


(酒田)

—— 当年値
----- 平年値

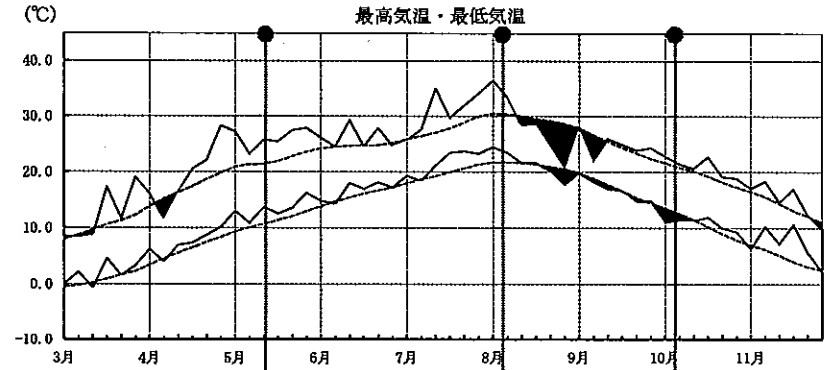


田植最盛期 5/18(Δ2)
 収穫最盛期 8/3(Δ3)
 刈取最盛期 10/1(1)

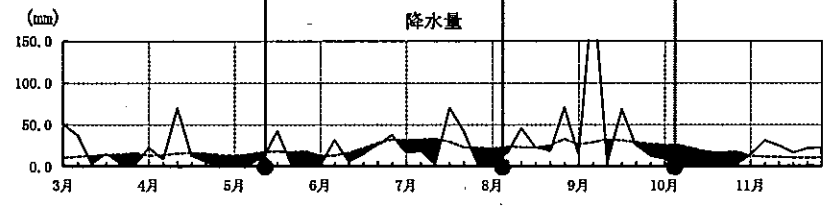
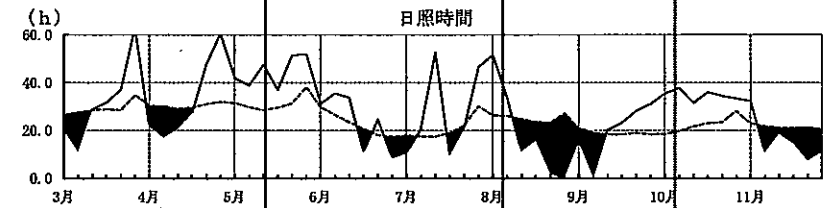
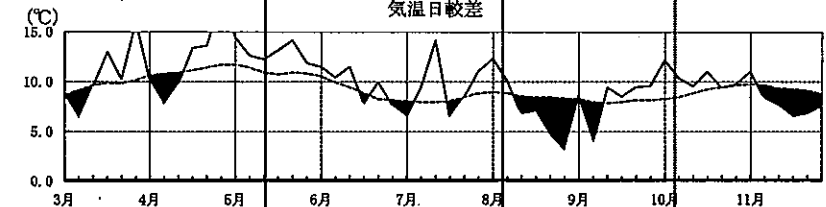


(福島)

—— 当年値
----- 平年値

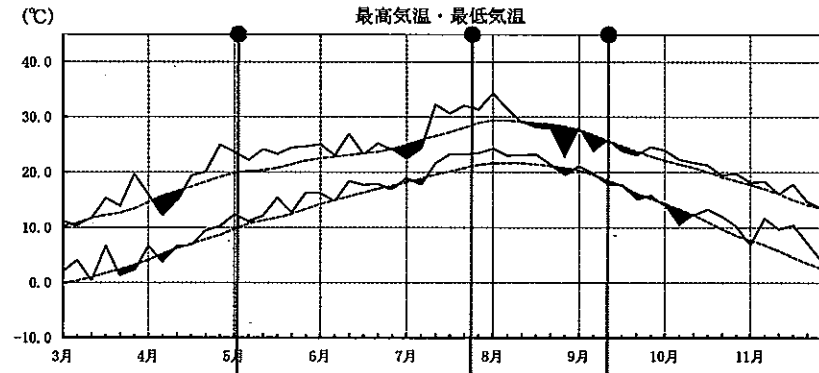


田植最盛期 5/16(Δ2)
 収穫最盛期 8/7(Δ3)
 刈取最盛期 10/8(0)



(水戸)

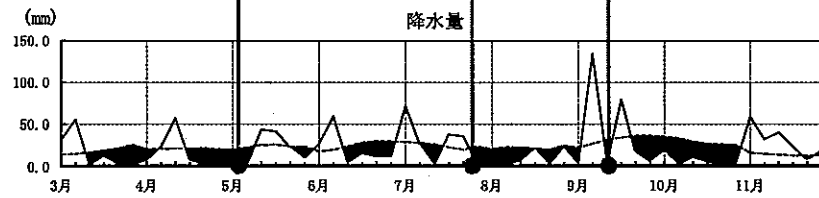
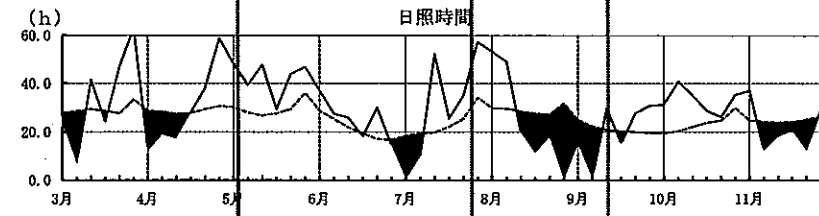
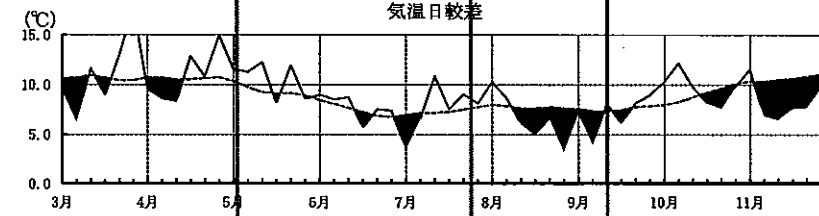
—— 当年値
----- 平年値



田植最盛期
5/5(△1)

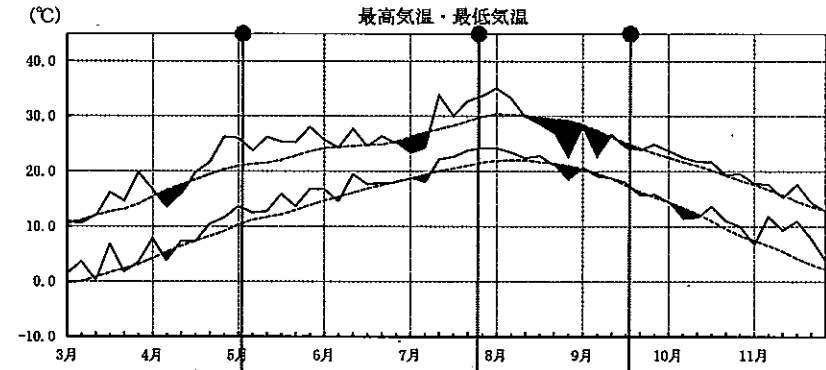
出穂最盛期
7/27(△6)

刈取最盛期
9/15(2)



(宇都宮)

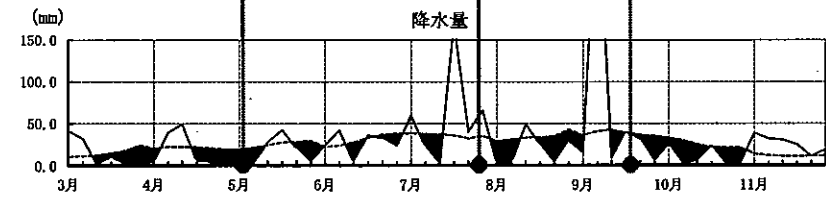
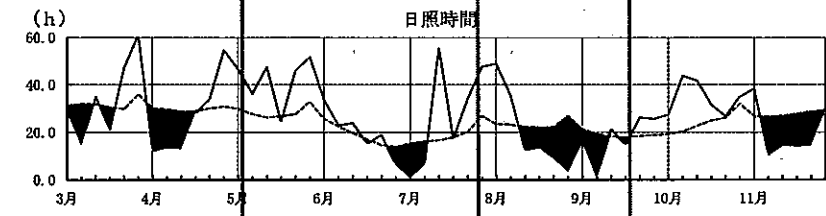
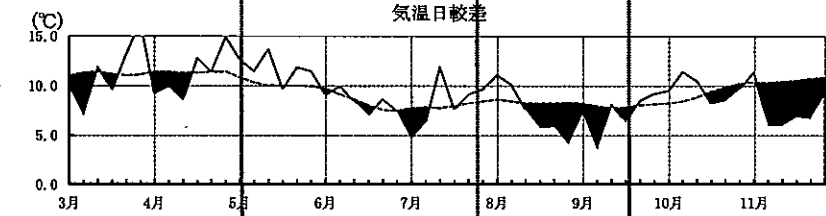
—— 当年値
----- 平年値



田植最盛期
5/5(△1)

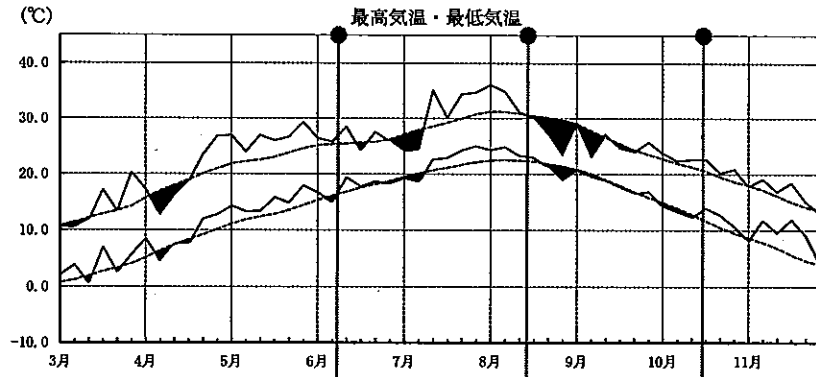
出穂最盛期
7/29(△6)

刈取最盛期
9/21(0)



(前橋)

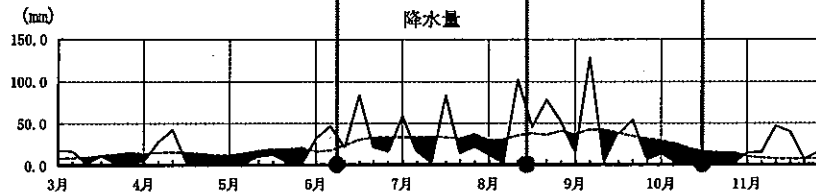
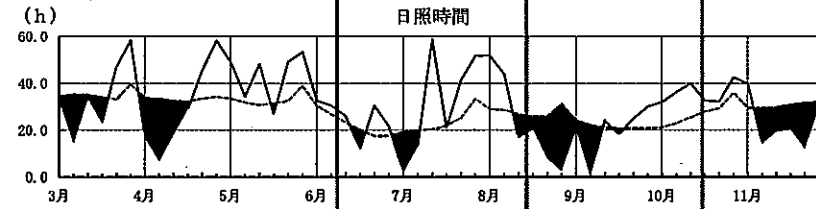
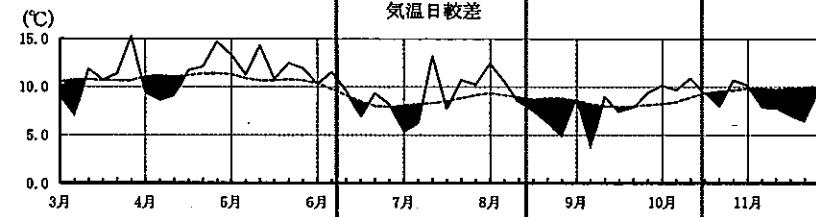
—— 当年値
----- 平年値



田植え最盛期
6/12(Δ3)

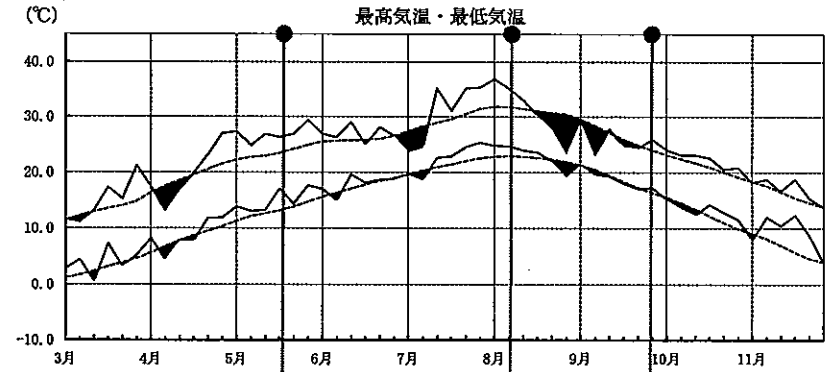
出穂最盛期
8/18(Δ2)

刈取最盛期
10/20(6)



(熊谷)

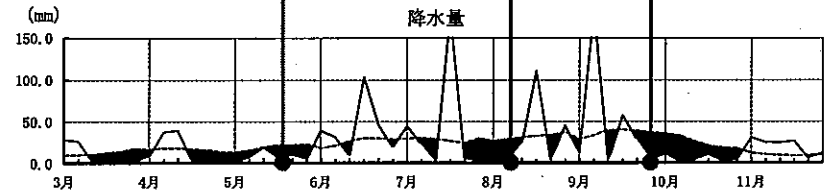
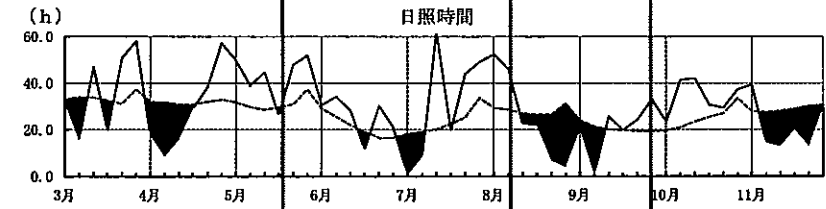
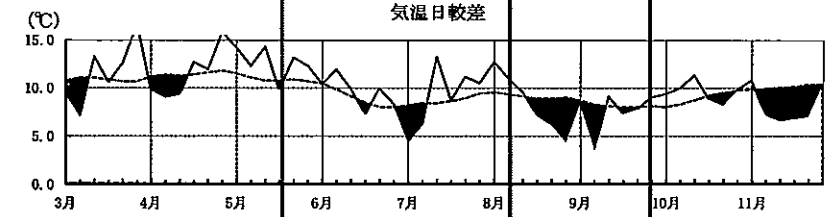
—— 当年値
----- 平年値



田植え最盛期
5/22(Δ1)

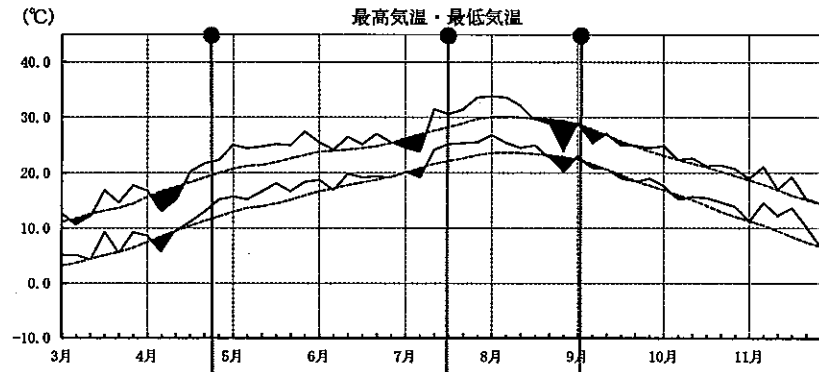
出穂最盛期
8/10(Δ2)

刈取最盛期
9/28(5)



(千葉)

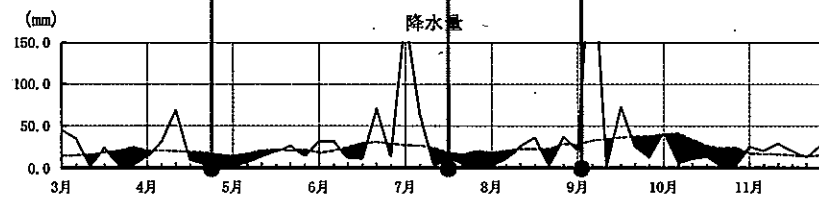
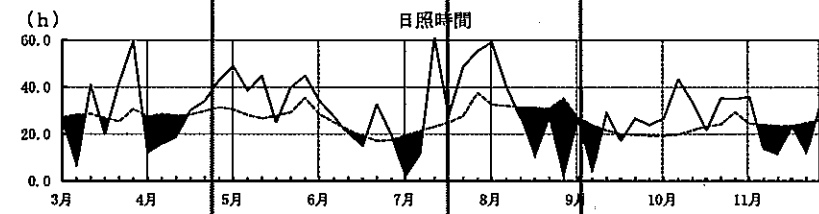
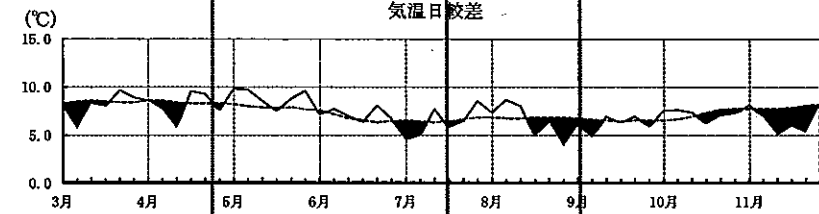
—— 当年値
----- 平年値



田植最盛期
4/27(Δ1)

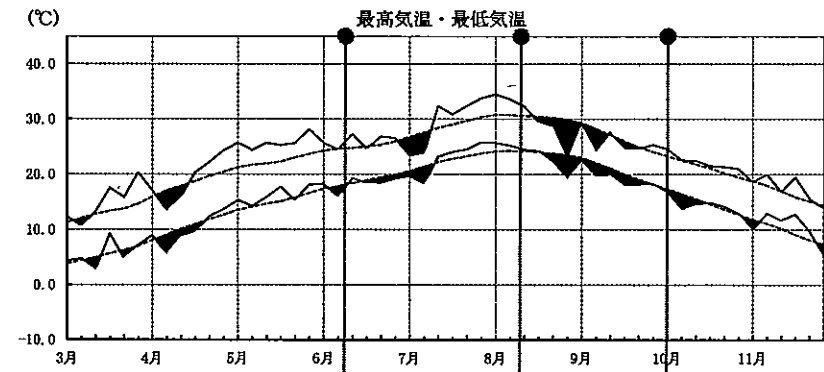
出穂最盛期
7/20(Δ6)

刈取最盛期
9/5(2)



(東京)

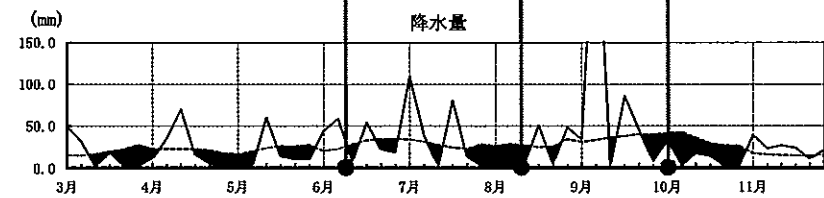
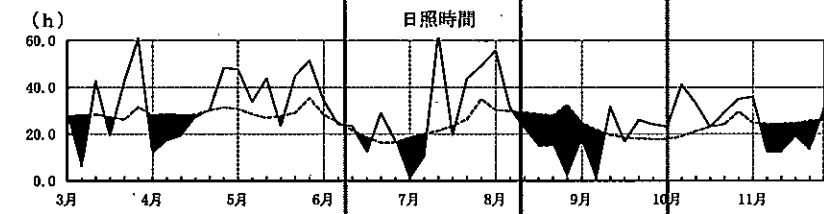
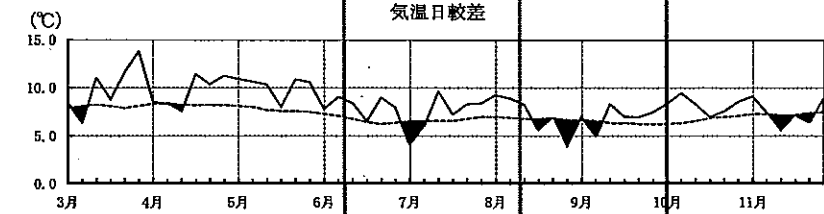
—— 当年値
----- 平年値



田植最盛期
6/13(0)

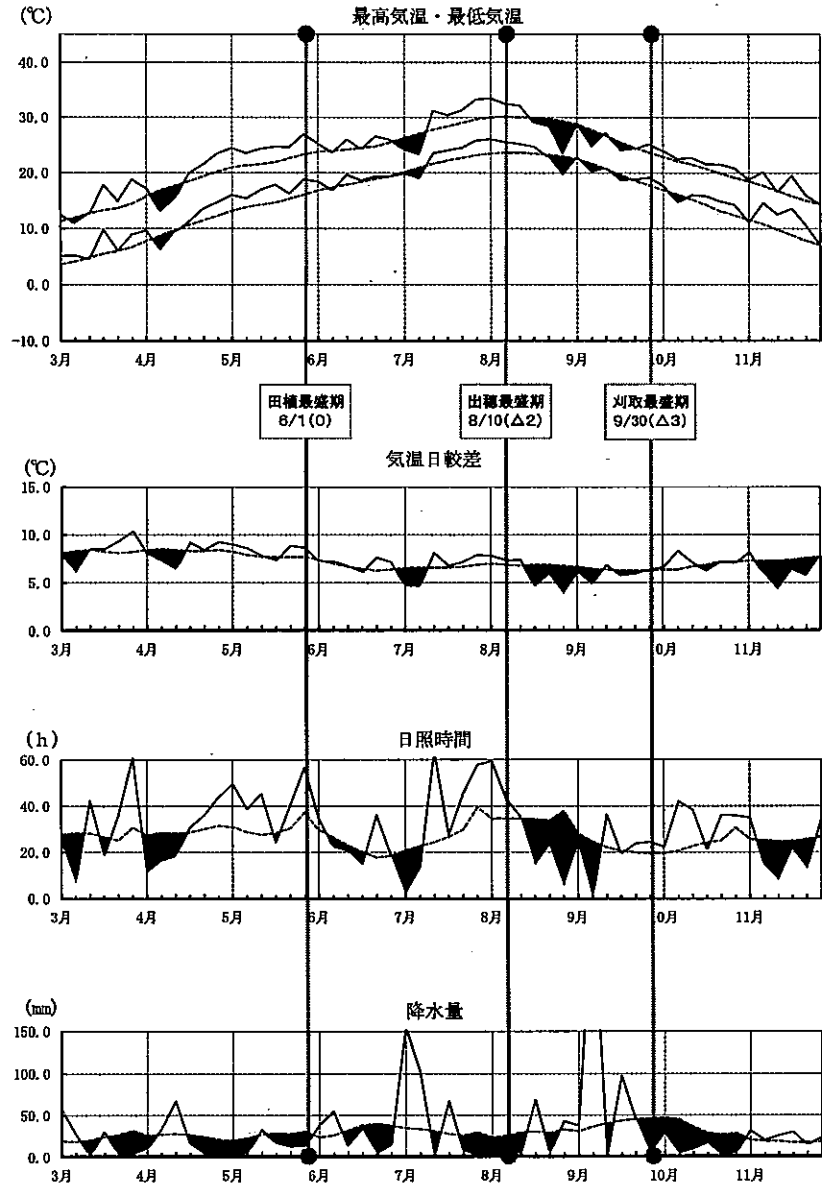
出穂最盛期
8/14(Δ2)

刈取最盛期
10/4(Δ1)



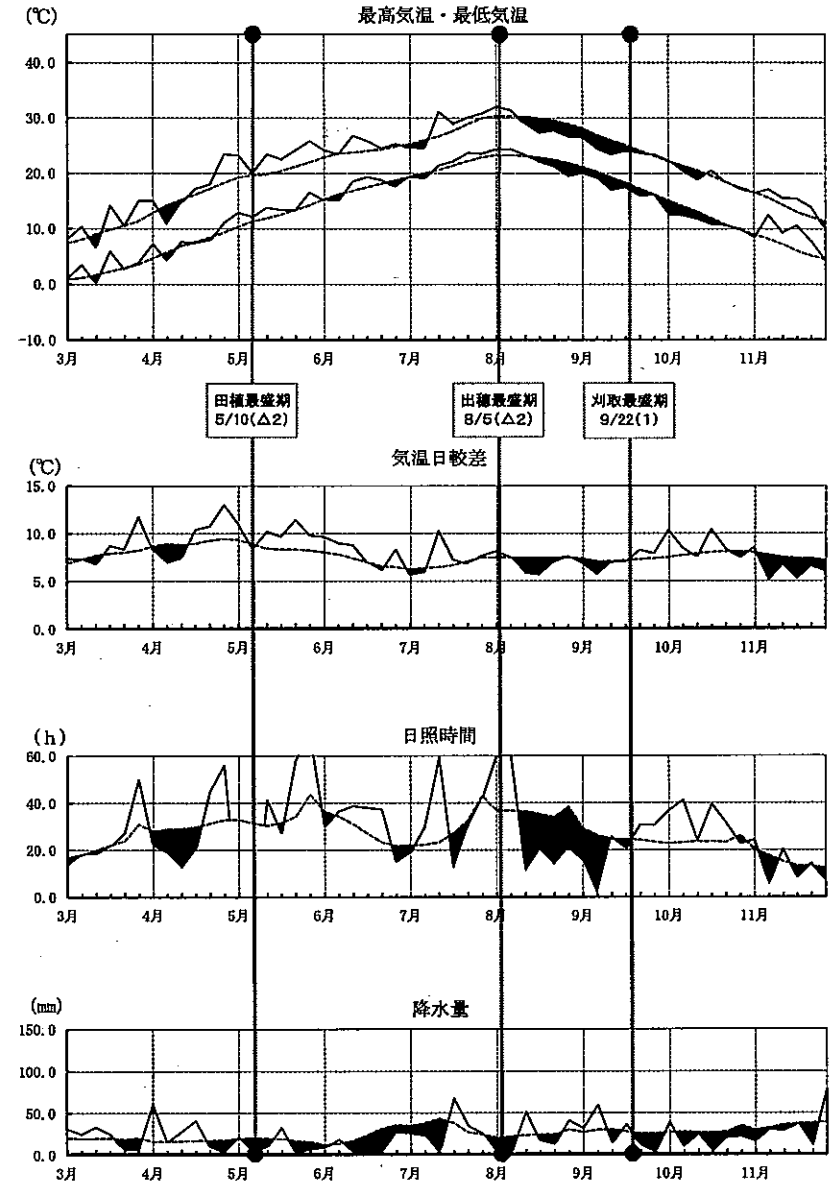
(横浜)

—— 当年値
----- 平年値



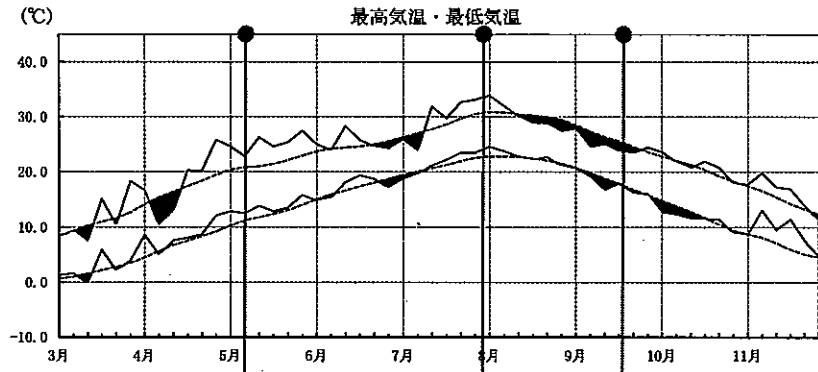
(新潟)

—— 当年値
----- 平年値

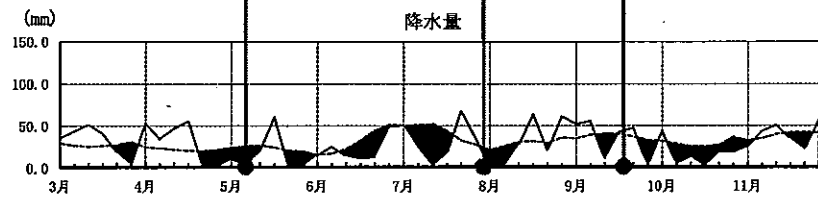
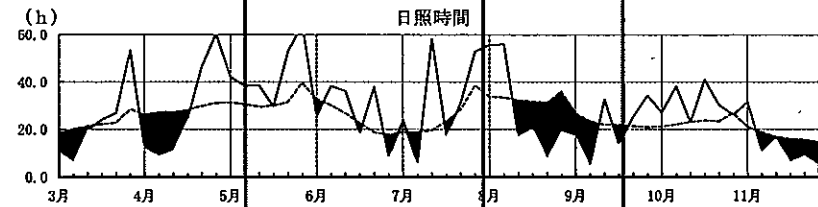
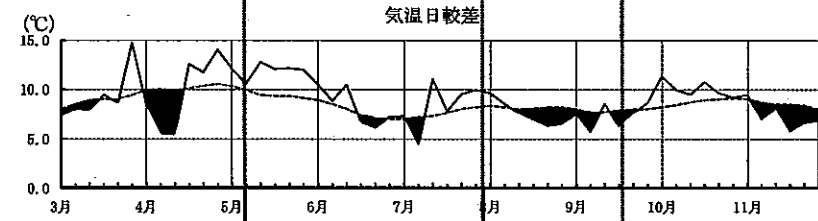


(高山)

—— 当年値
----- 平年値

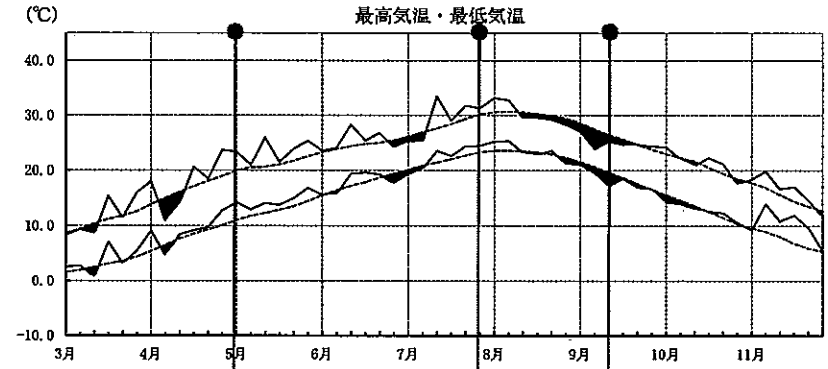


田植最盛期 5/10(Δ3)
 出穂最盛期 8/2(Δ1)
 刈取最盛期 9/18(0)

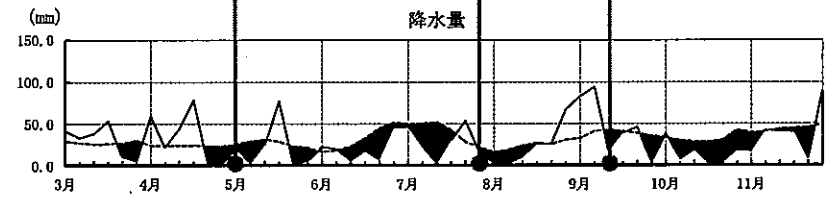
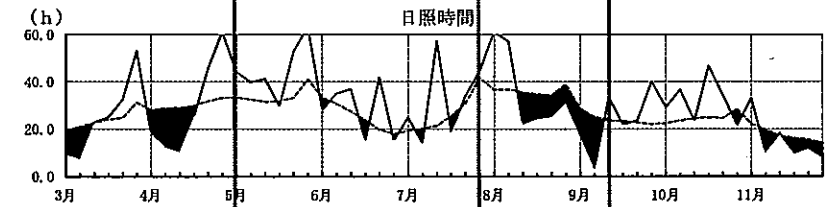
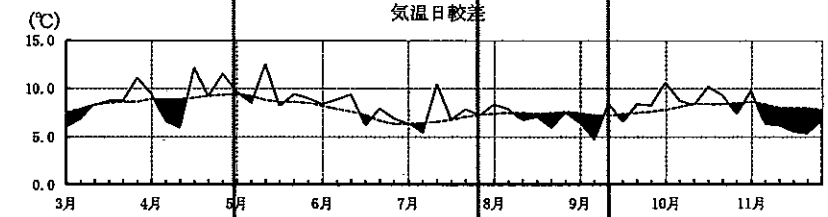


(金沢)

—— 当年値
----- 平年値

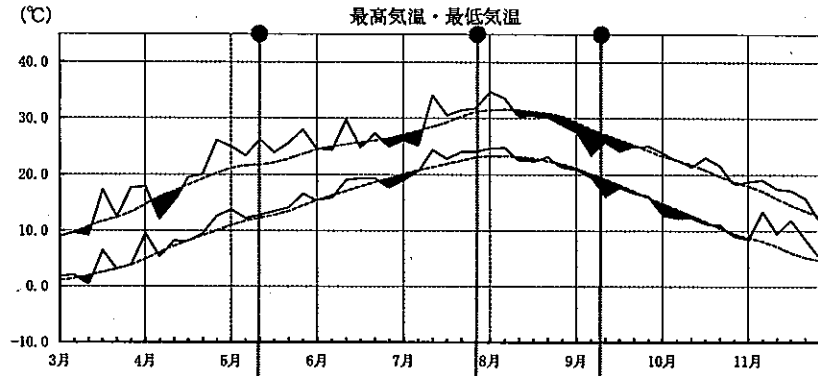


田植最盛期 5/4(Δ1)
 出穂最盛期 7/29(Δ3)
 刈取最盛期 9/15(2)

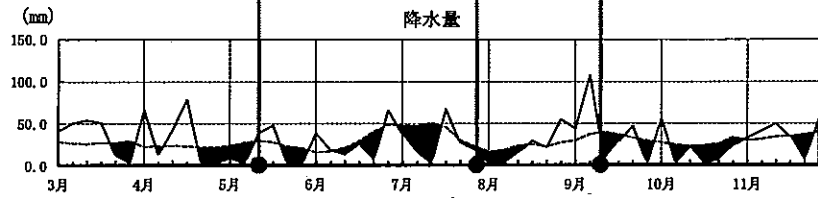
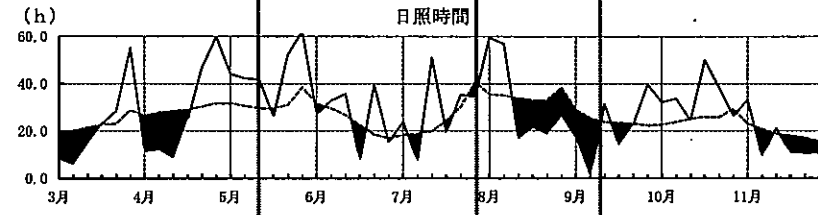
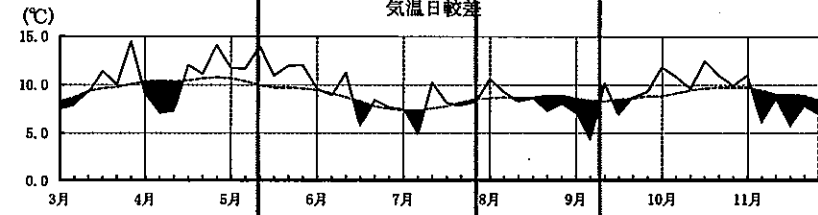


(福井)

—— 当年値
----- 平年値

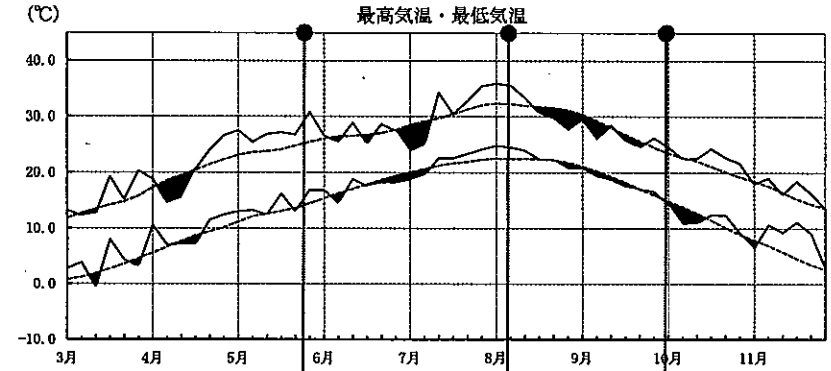


田植え最盛期 5/15(Δ1)
 収穫最盛期 8/1(Δ2)
 刈取最盛期 9/13(2)

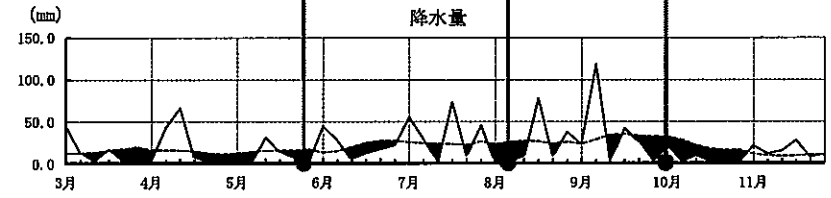
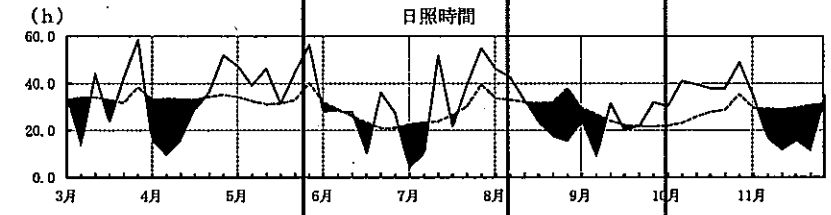
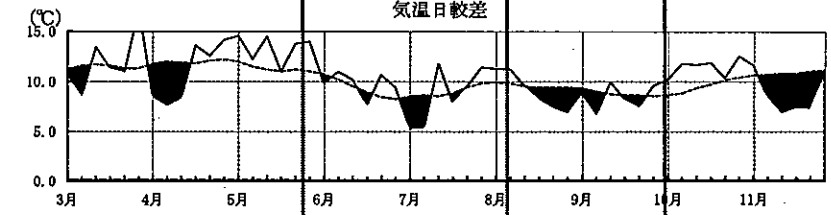


(甲府)

—— 当年値
----- 平年値

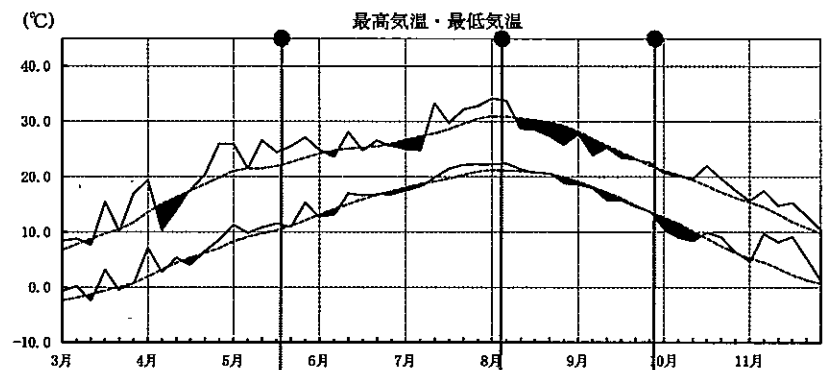


田植え最盛期 5/28(Δ2)
 収穫最盛期 8/8(Δ3)
 刈取最盛期 10/2(3)

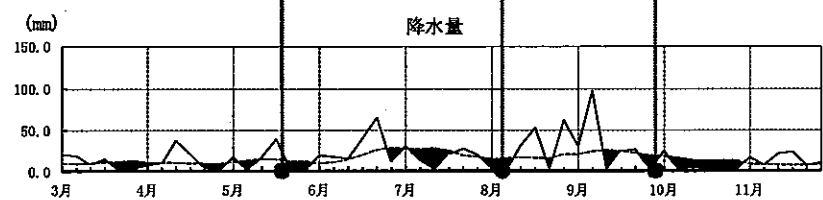
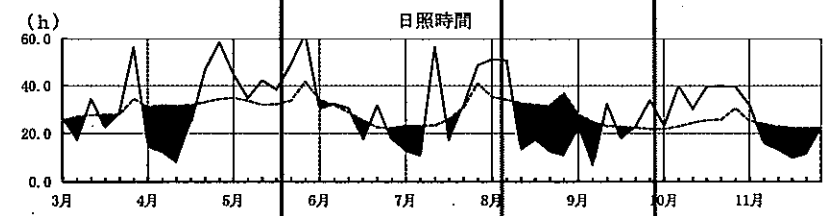
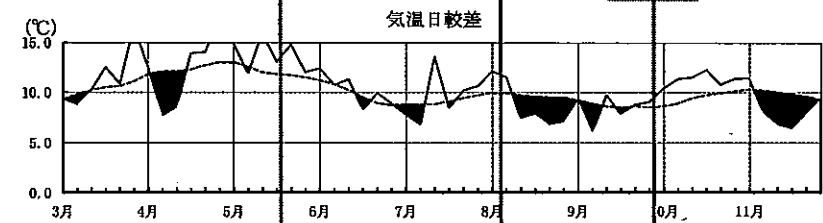


(長野)

—— 当年値
----- 平年値

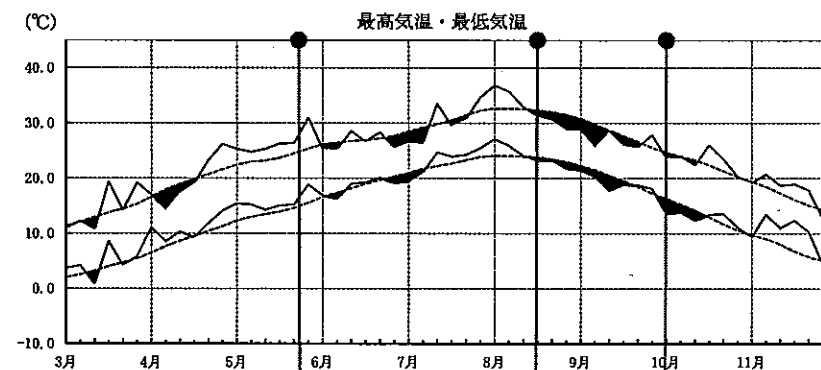


田植え最盛期 5/22(0)
出穂最盛期 8/7(Δ1)
刈取最盛期 10/1(2)

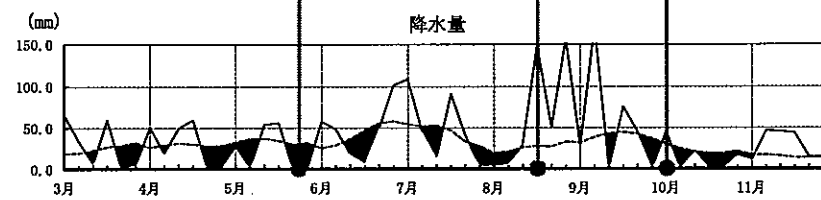
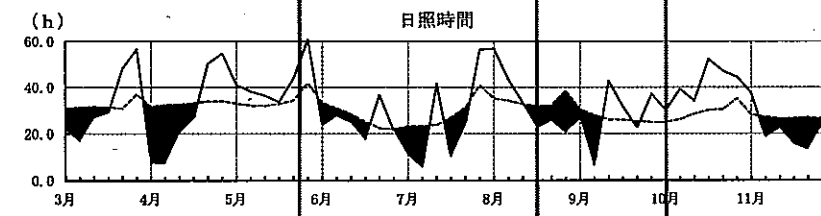
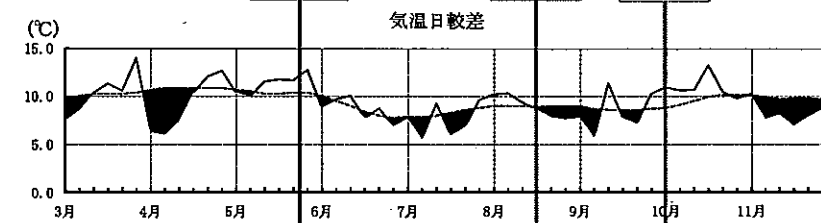


(岐阜)

—— 当年値
----- 平年値

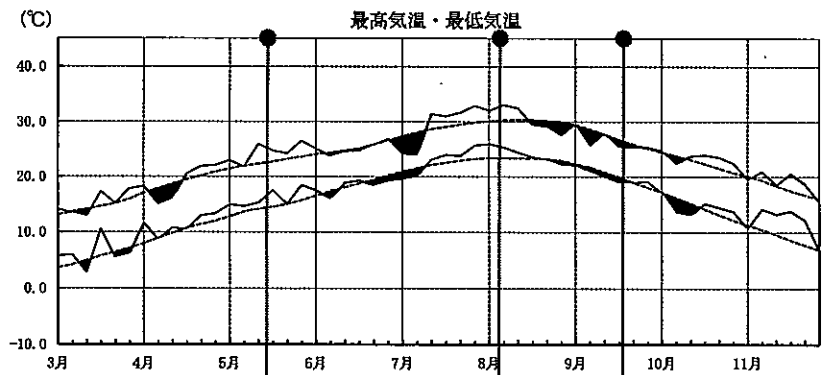


田植え最盛期 5/27(0)
出穂最盛期 8/20(0)
刈取最盛期 10/4(2)

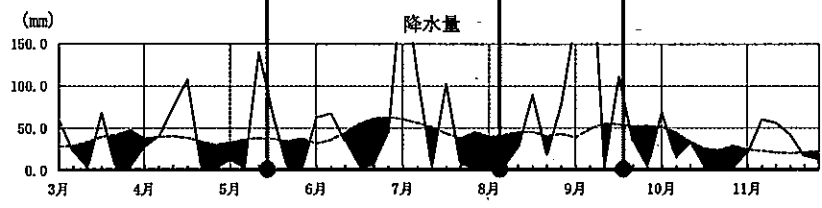
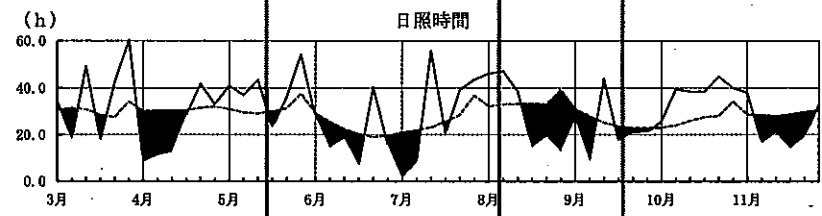
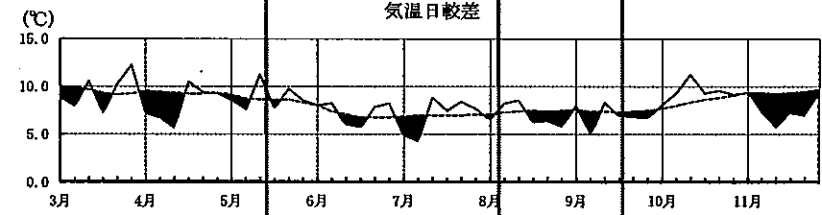


(静岡)

—— 当年値
----- 平年値

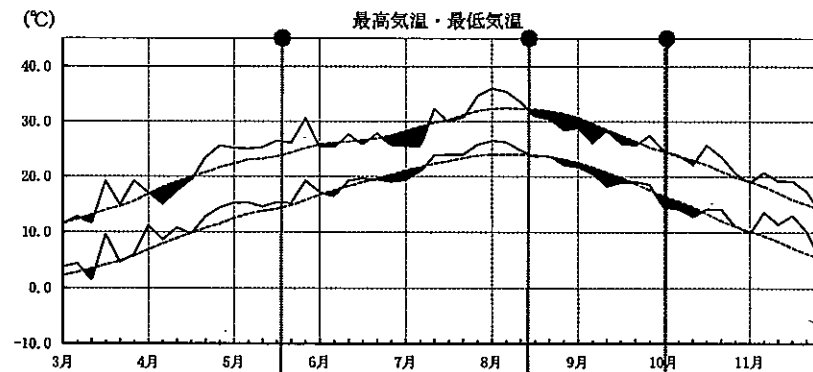


田植え最盛期 5/19(Δ3)
 出穂最盛期 8/7(Δ4)
 刈取最盛期 9/21(0)

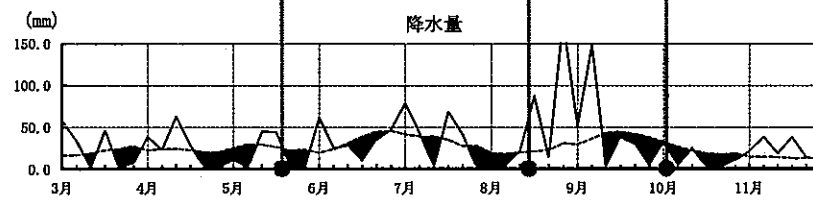
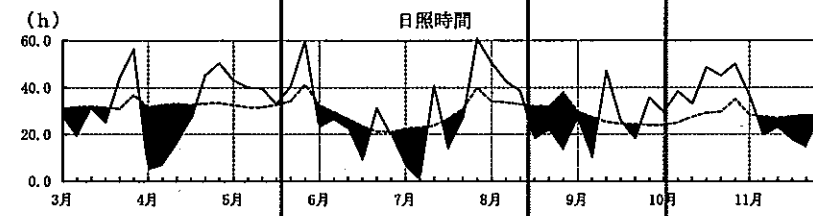
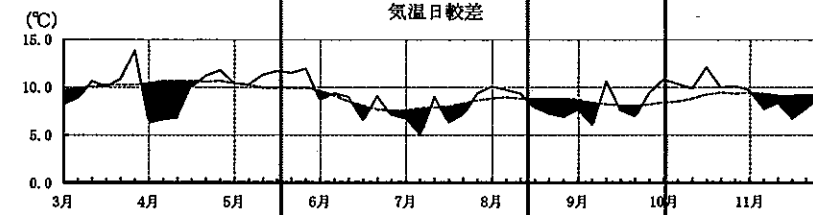


(名古屋)

—— 当年値
----- 平年値

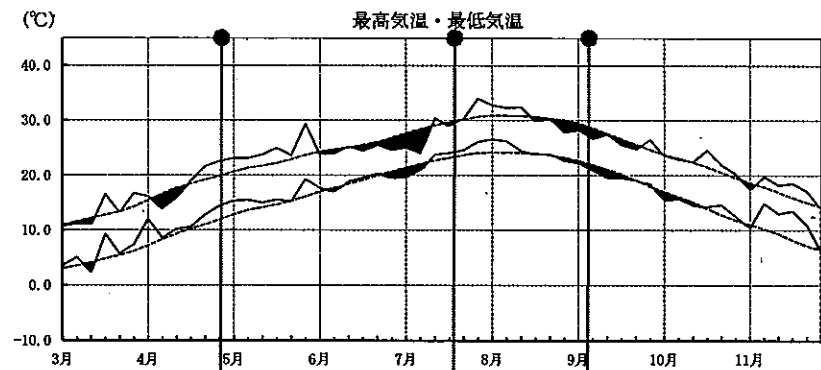


田植え最盛期 5/23(Δ1)
 出穂最盛期 8/18(0)
 刈取最盛期 10/5(1)

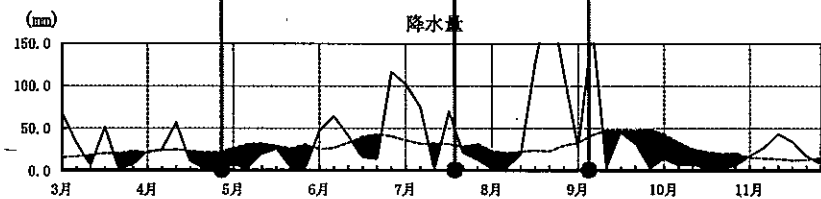
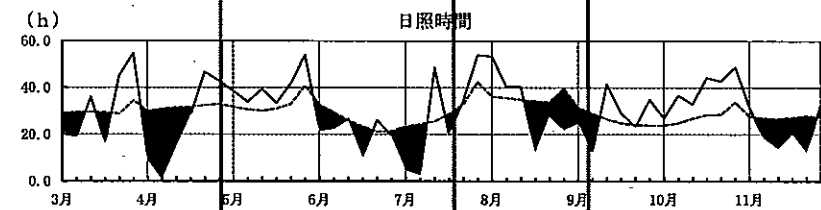
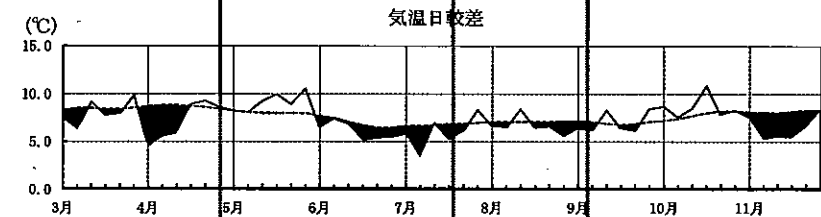


(津)

—— 当年値
----- 平年値

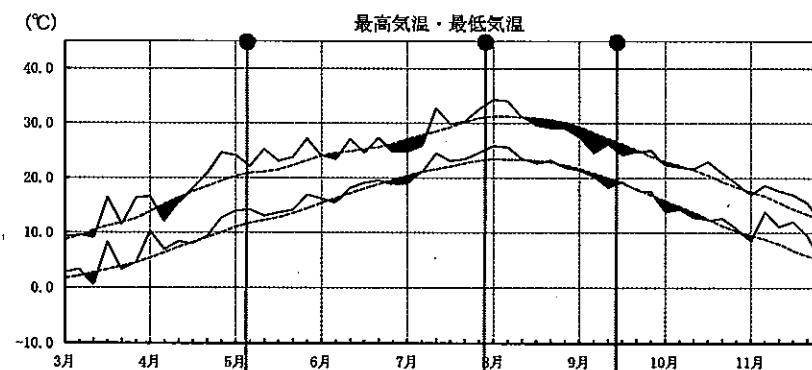


田植最盛期 5/1(0)
出穂最盛期 7/23(Δ3)
刈取最盛期 9/7(4)

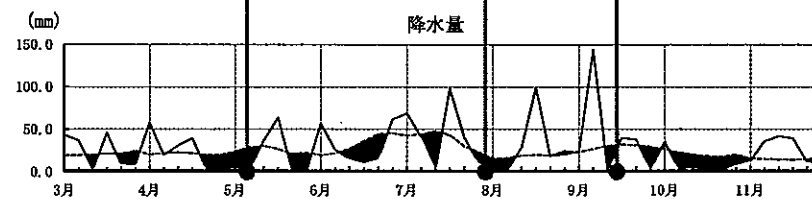
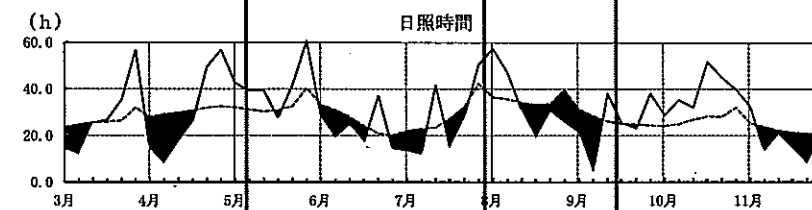
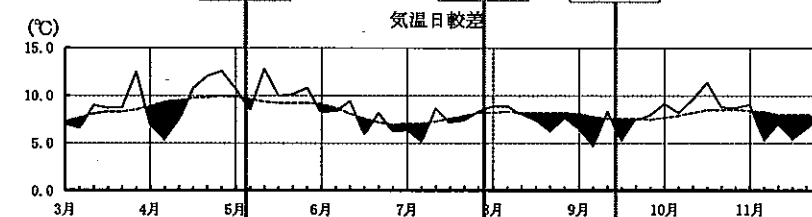


(彦根)

—— 当年値
----- 平年値

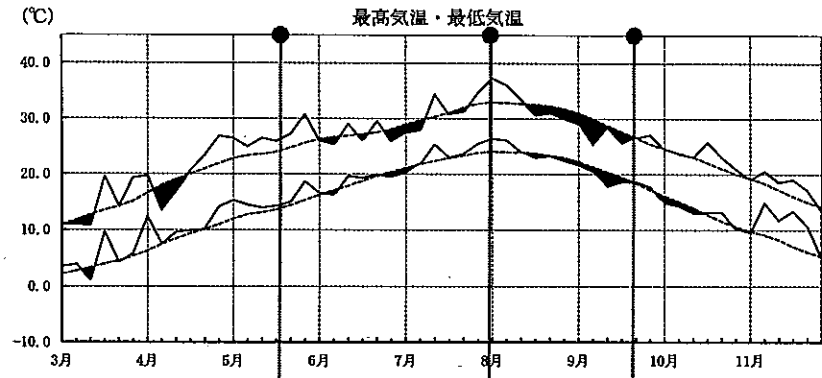


田植最盛期 5/9(Δ2)
出穂最盛期 8/2(Δ1)
刈取最盛期 9/18(1)



(京都)

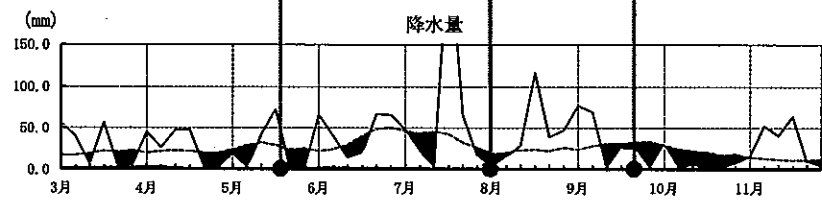
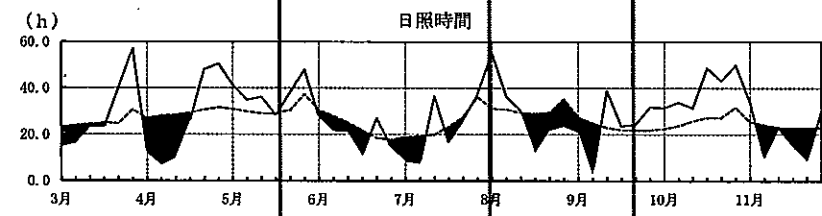
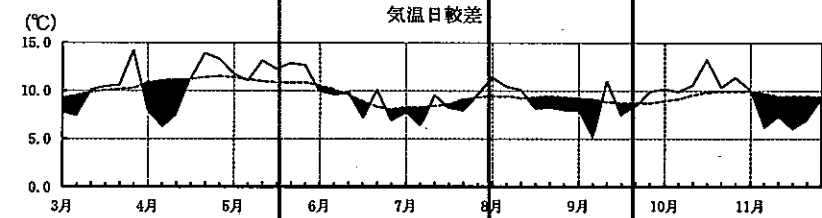
—— 当年値
----- 平年値



田植最盛期 5/22(Δ1)

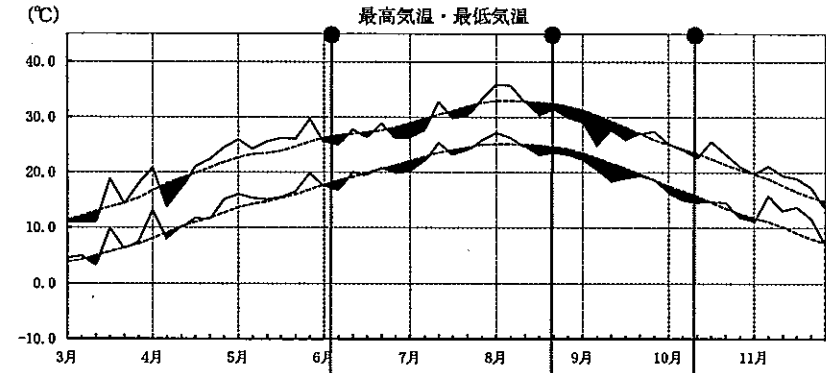
出穂最盛期 8/4(Δ1)

刈取最盛期 9/25(2)



(大阪)

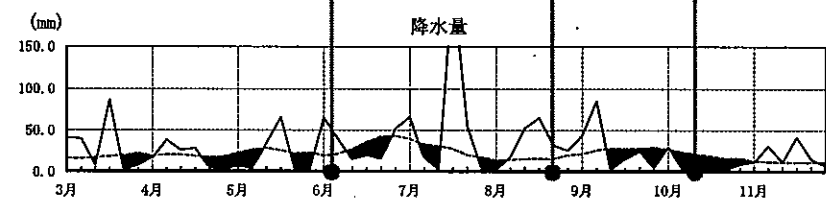
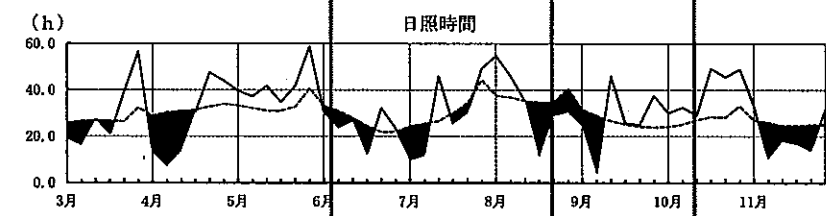
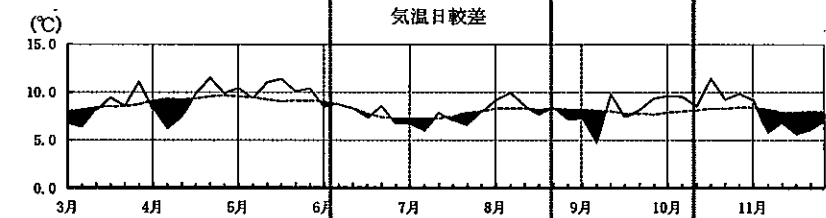
—— 当年値
----- 平年値



田植最盛期 6/7(Δ1)

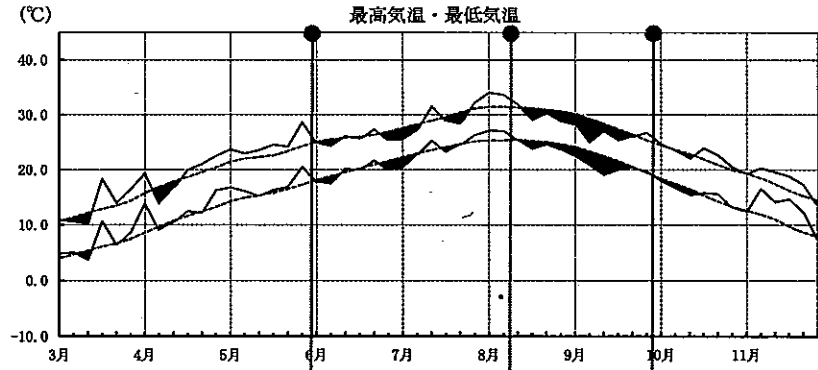
出穂最盛期 8/25(2)

刈取最盛期 10/14(2)

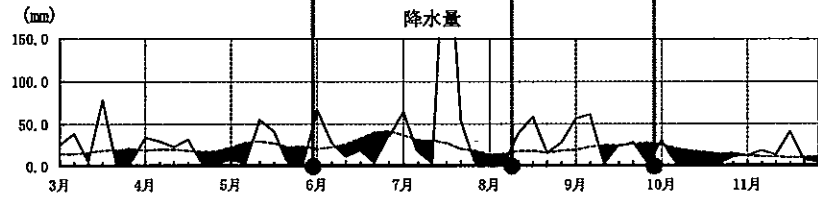
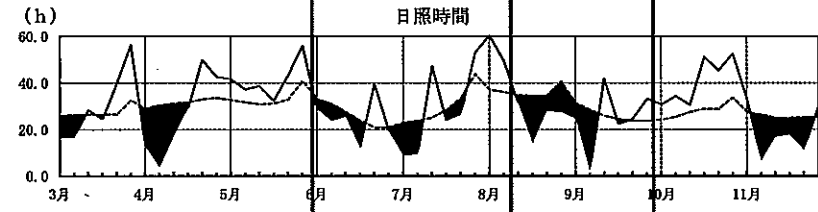
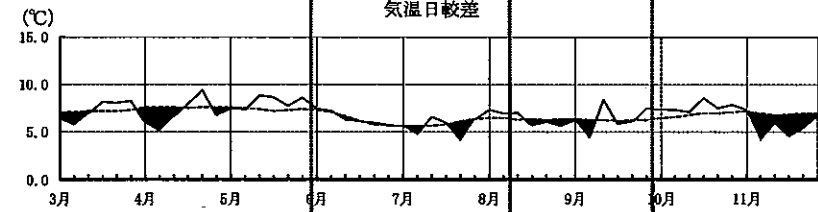


(神戸)

—— 当年値
----- 平年値

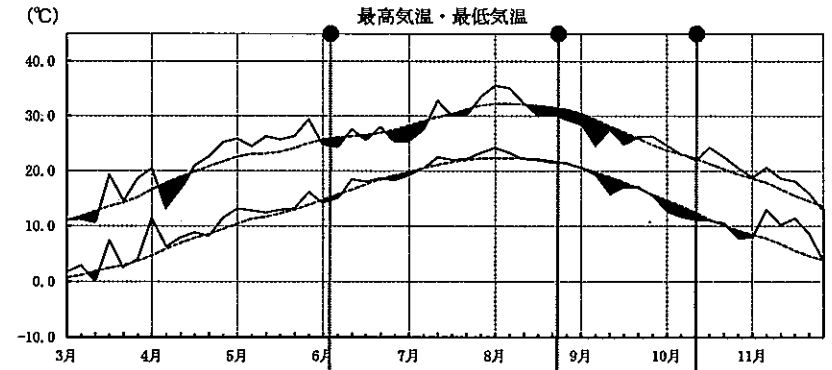


田植最盛期 6/4(0)
出穂最盛期 8/13(0)
刈取最盛期 10/1(6)

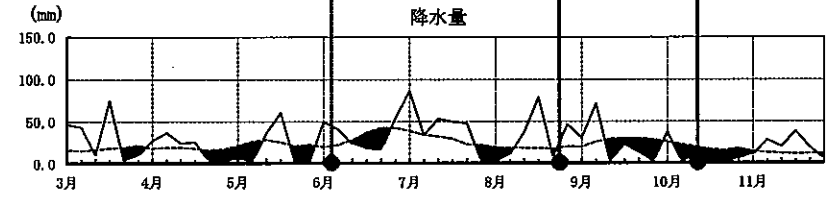
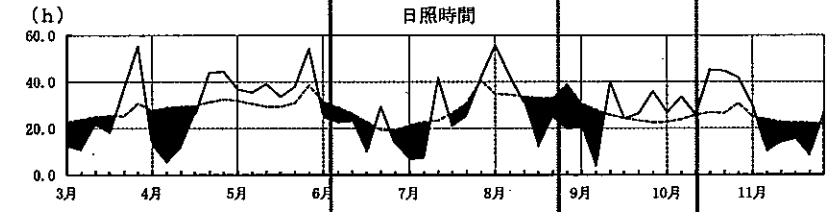
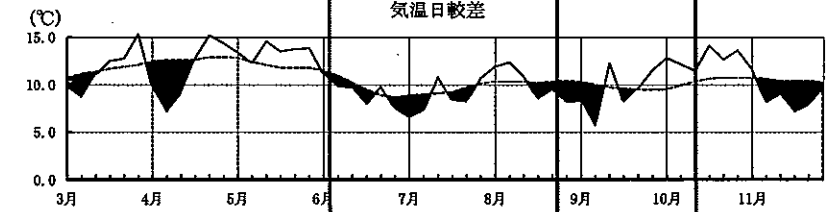


(奈良)

—— 当年値
----- 平年値

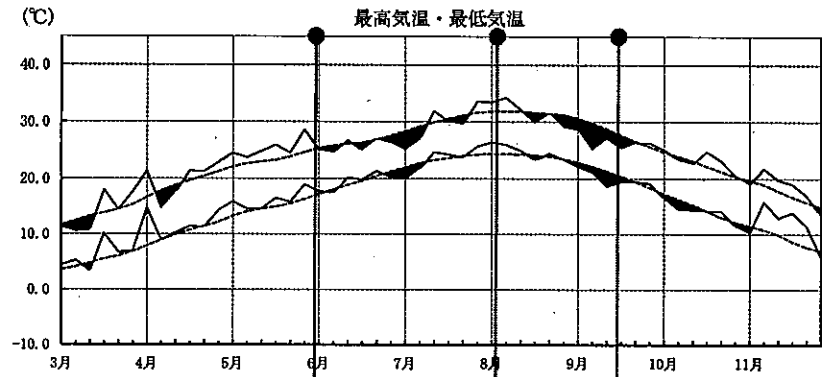


田植最盛期 6/8(0)
出穂最盛期 8/28(3)
刈取最盛期 10/15(1)

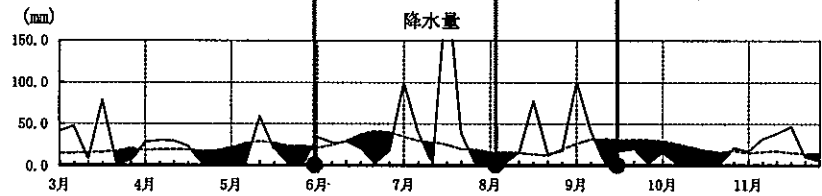
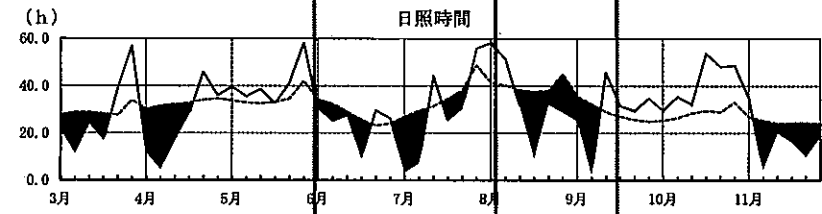
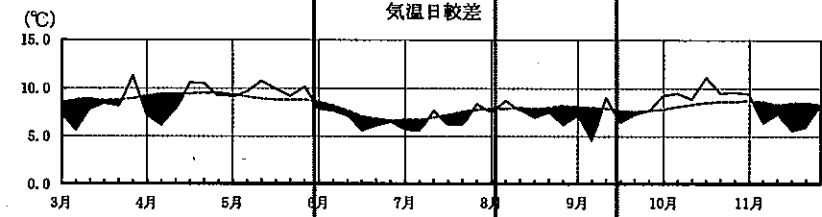


(和歌山)

—— 当年値
----- 平年値

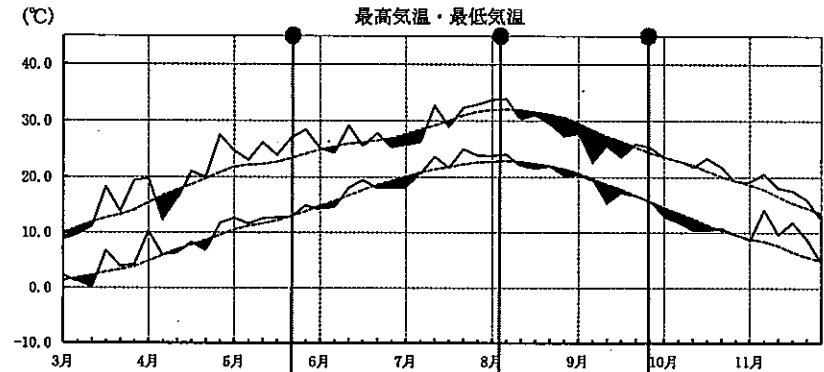


田植え最盛期 6/3(Δ1)
 収穫最盛期 8/7(Δ1)
 刈取最盛期 9/19(0)

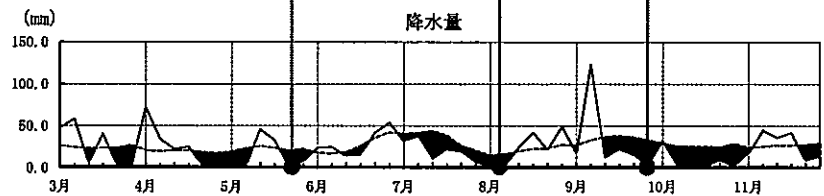
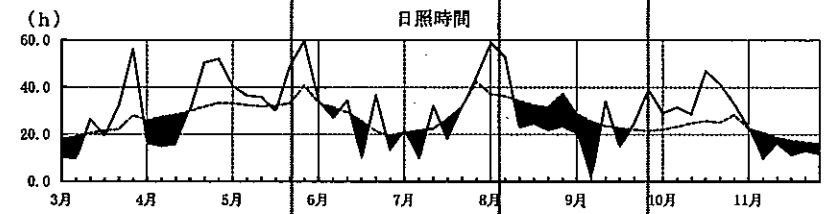
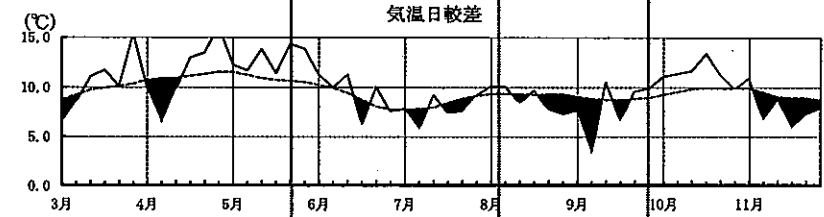


(鳥取)

—— 当年値
----- 平年値

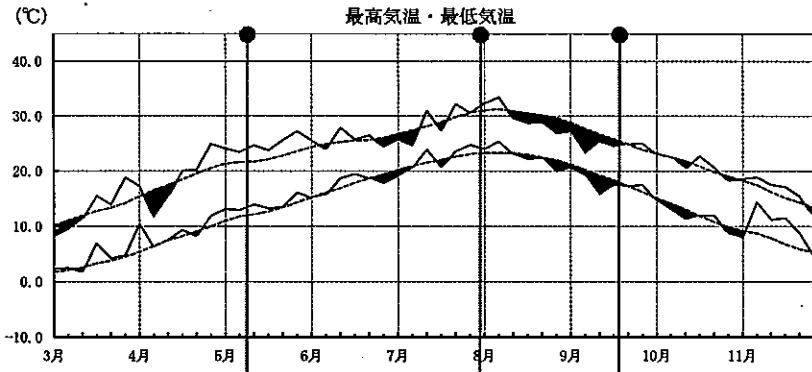


田植え最盛期 5/25(0)
 収穫最盛期 8/7(0)
 刈取最盛期 9/28(6)



(松江)

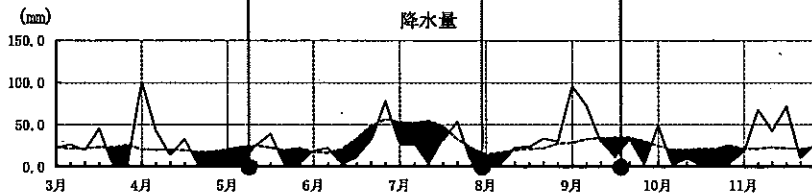
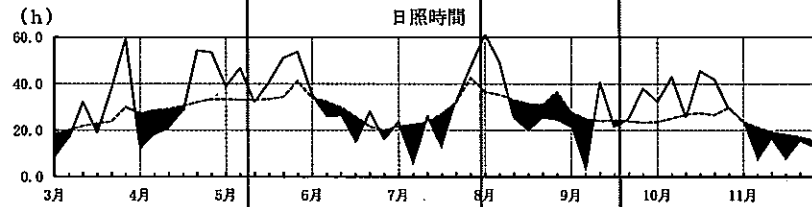
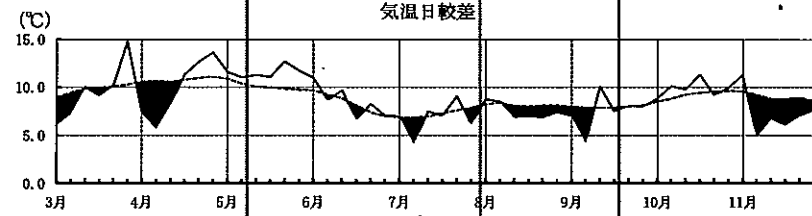
—— 当年値
----- 平年値



田植最盛期
5/13(Δ2)

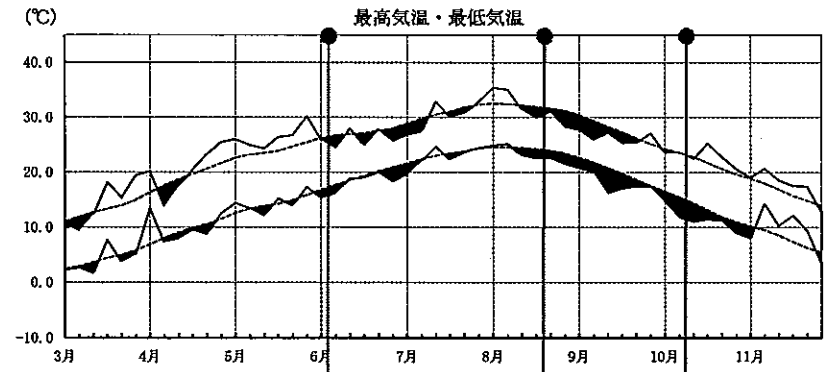
出穂最盛期
8/3(Δ1)

刈取最盛期
9/22(4)



(岡山)

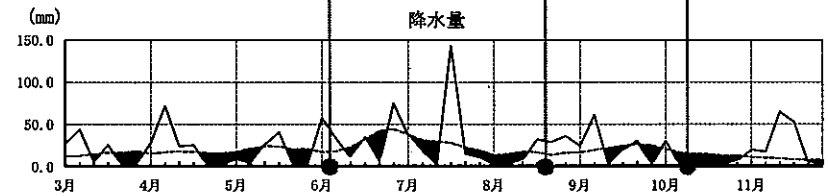
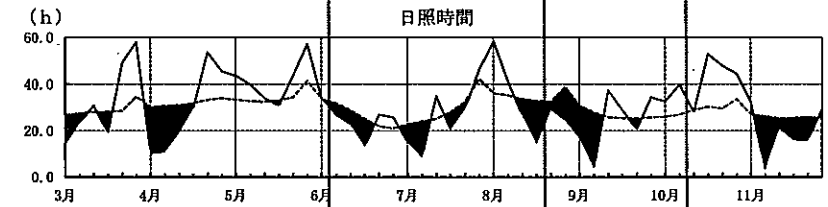
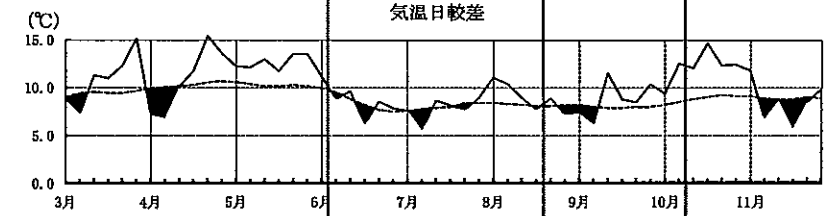
—— 当年値
----- 平年値



田植最盛期
6/7(Δ1)

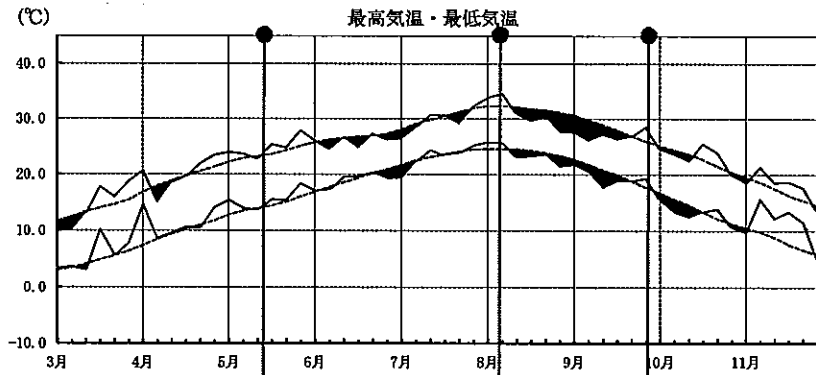
出穂最盛期
8/24(5)

刈取最盛期
10/11(6)



(広島)

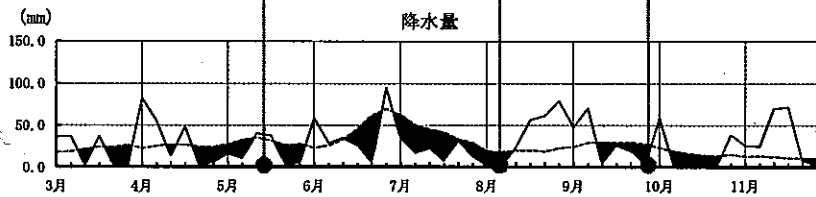
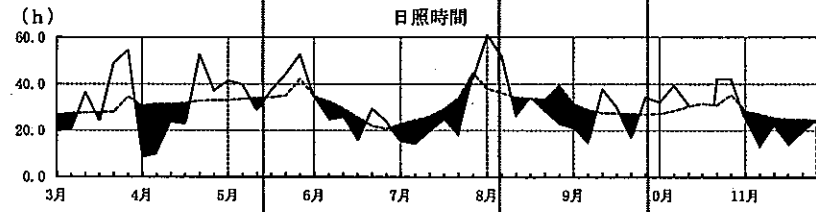
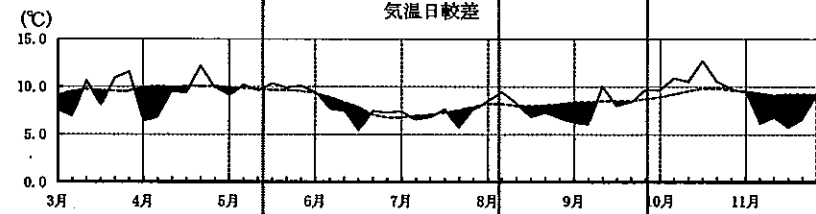
—— 当年値
----- 平年値



田植え最盛期
5/18(Δ1)

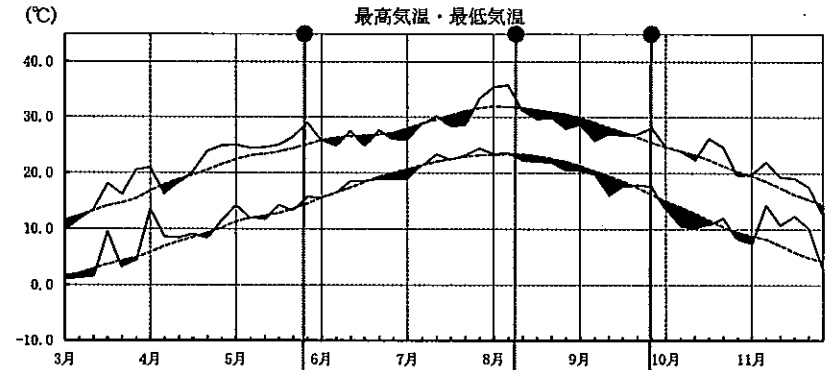
出穂最盛期
8/9(0)

刈取最盛期
9/30(6)



(山口)

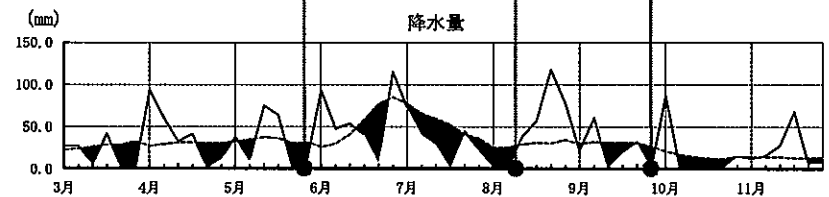
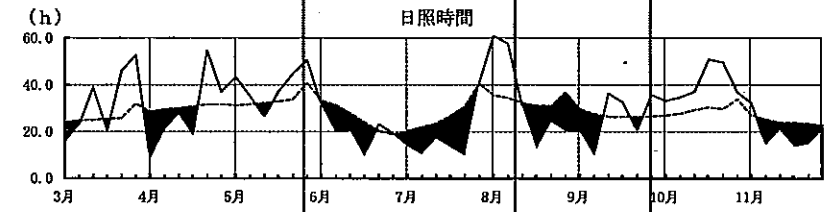
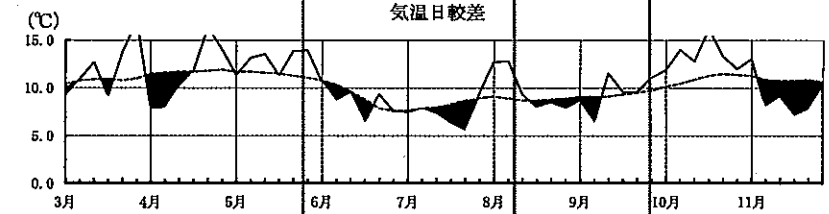
—— 当年値
----- 平年値



田植え最盛期
5/31(0)

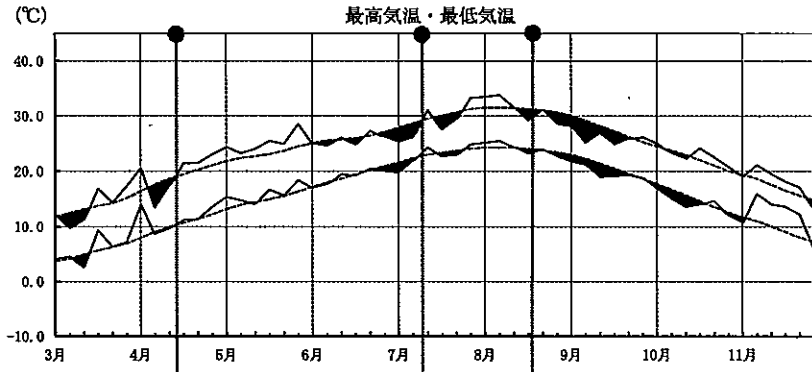
出穂最盛期
8/12(3)

刈取最盛期
9/27(3)



(徳島) 早期

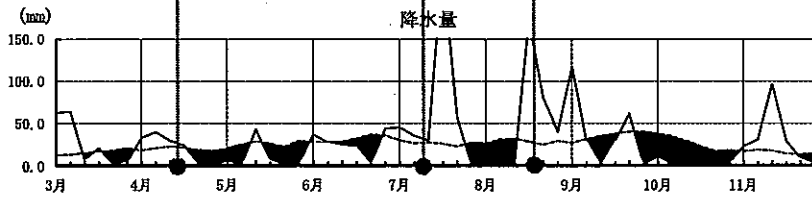
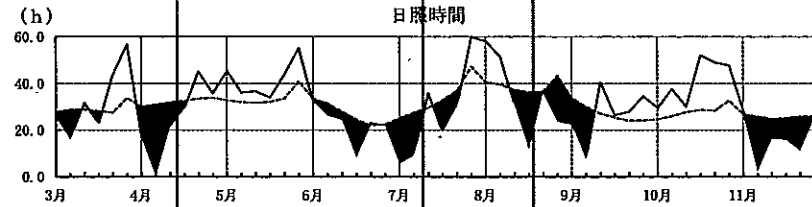
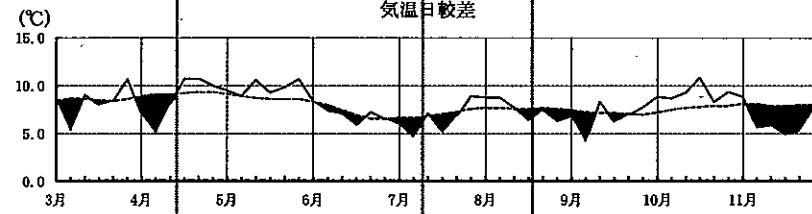
—— 当年値
- - - 平年値



田植最盛期
4/17(Δ1)

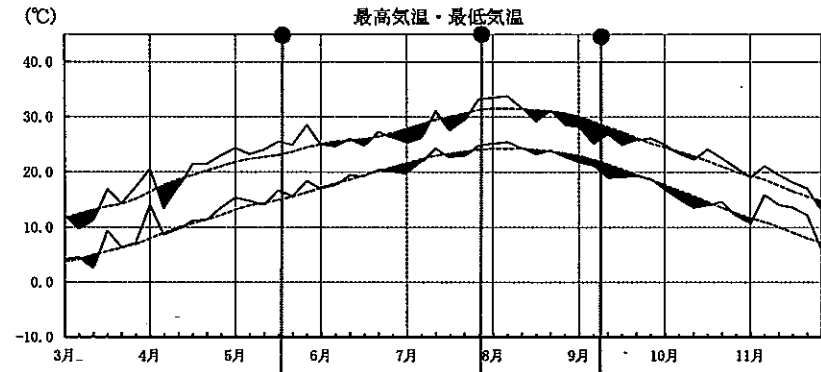
収穫最盛期
7/14(Δ4)

刈取最盛期
8/22(Δ3)



(徳島) 普通期

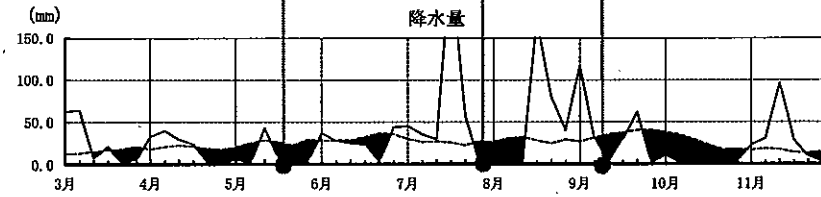
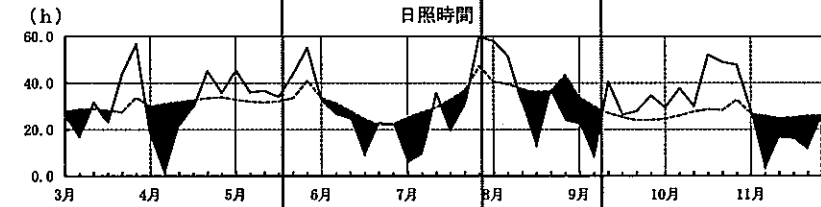
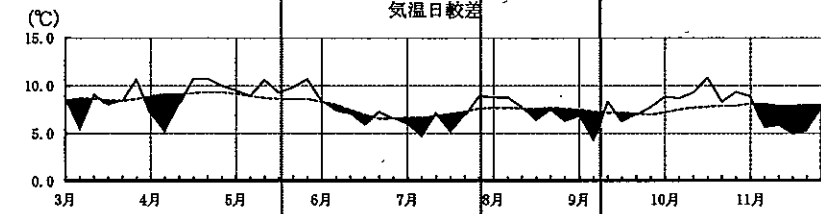
—— 当年値
- - - 平年値



田植最盛期
5/23(1)

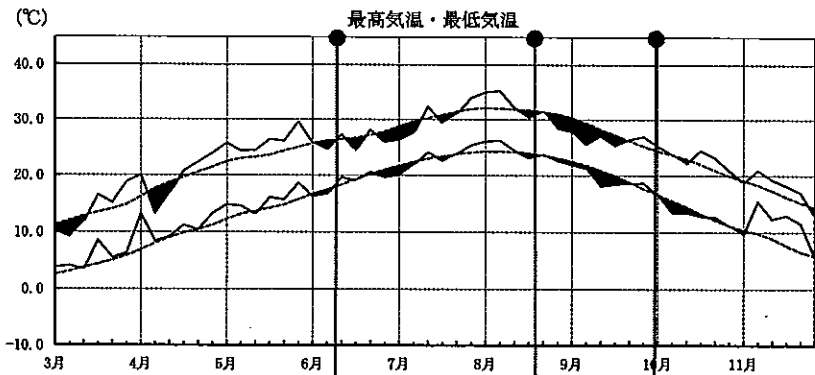
収穫最盛期
8/1(0)

刈取最盛期
9/12(1)



(高松)

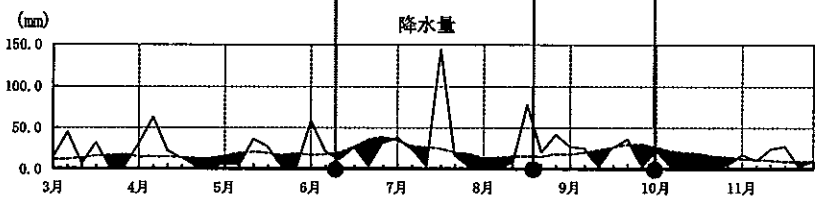
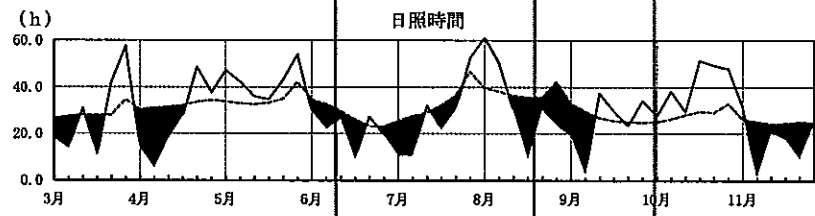
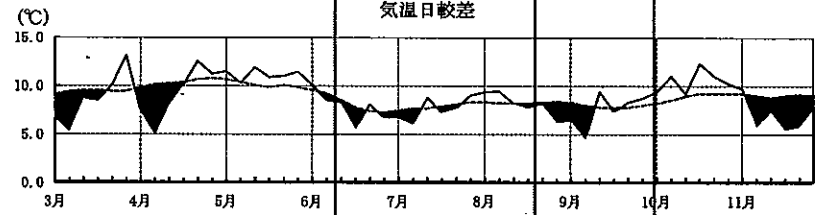
—— 当年値
----- 平年値



田植え最盛期 6/14(0)

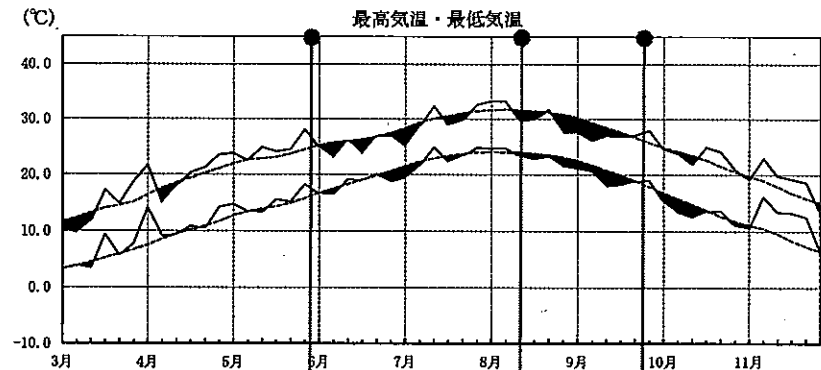
収穫最盛期 8/24(3)

刈取最盛期 10/3(2)



(松山)

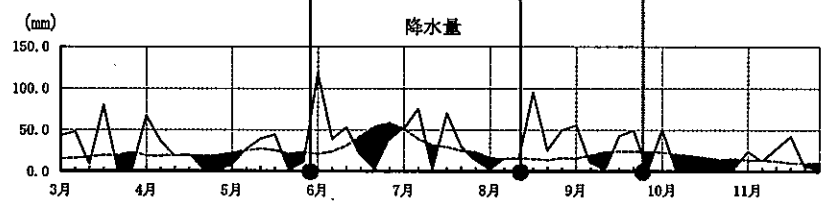
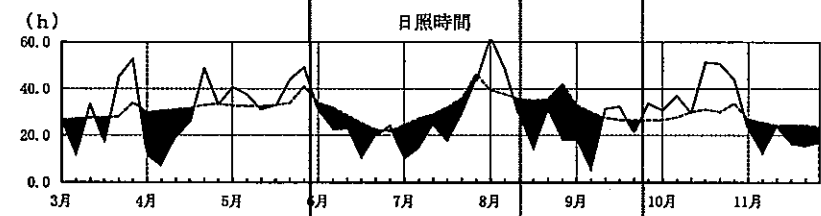
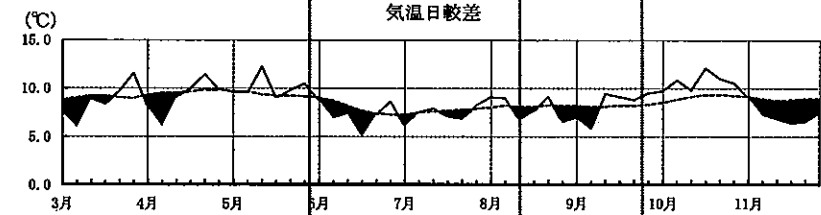
—— 当年値
----- 平年値



田植え最盛期 6/1(△1)

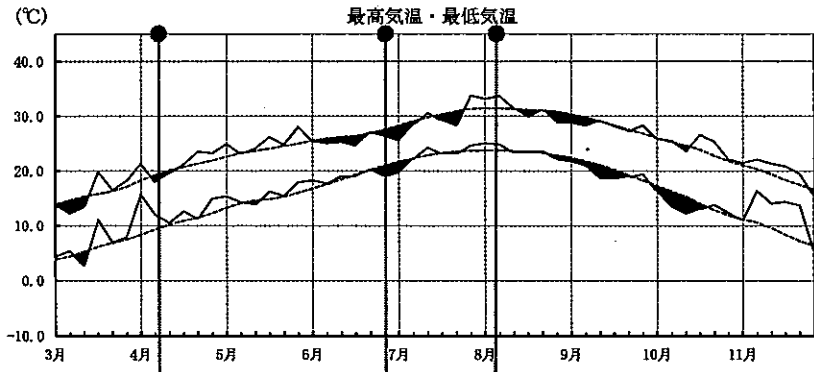
収穫最盛期 8/15(1)

刈取最盛期 9/27(3)

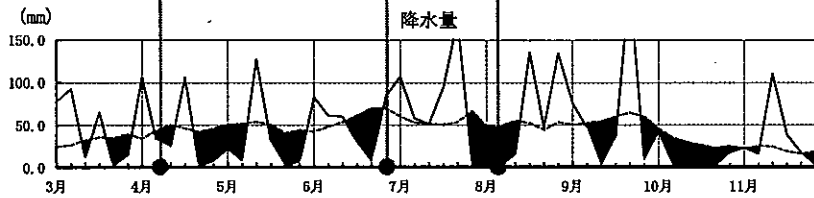
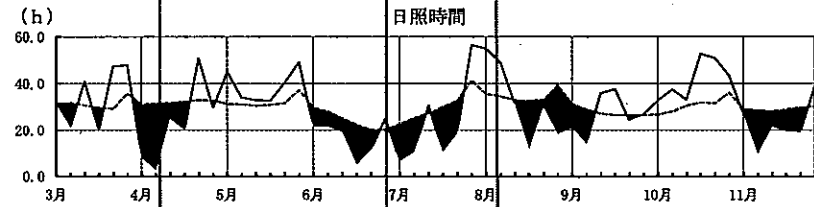
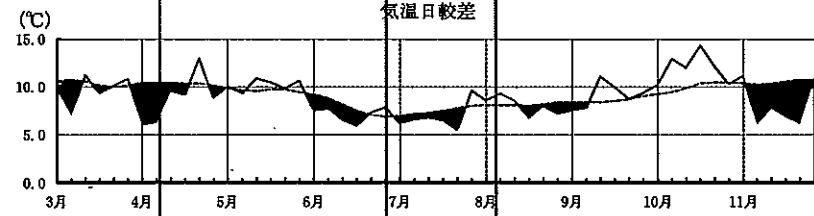


(高知) 早期

—— 当年値
----- 平年値

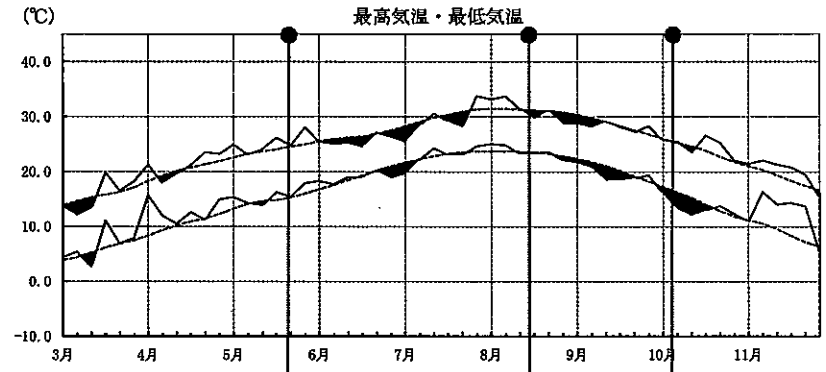


田植最盛期 4/11(Δ1)
 出穂最盛期 7/1(Δ7)
 刈取最盛期 8/9(Δ6)

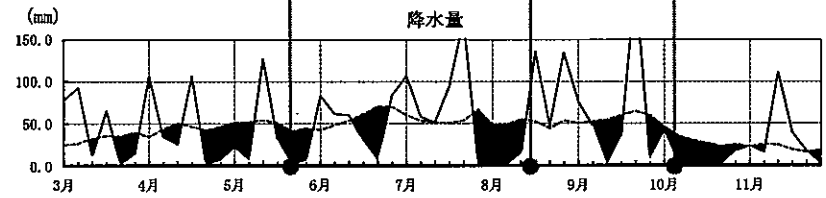
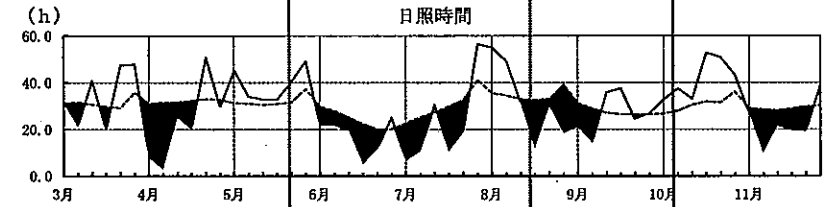
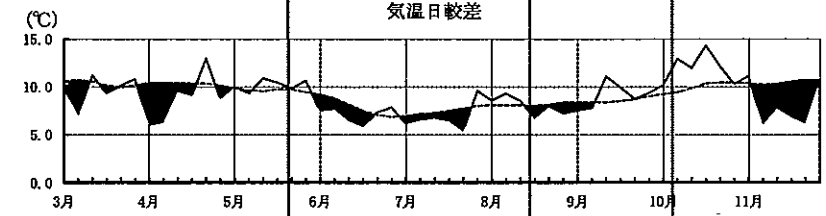


(高知) 普通期

—— 当年値
----- 平年値

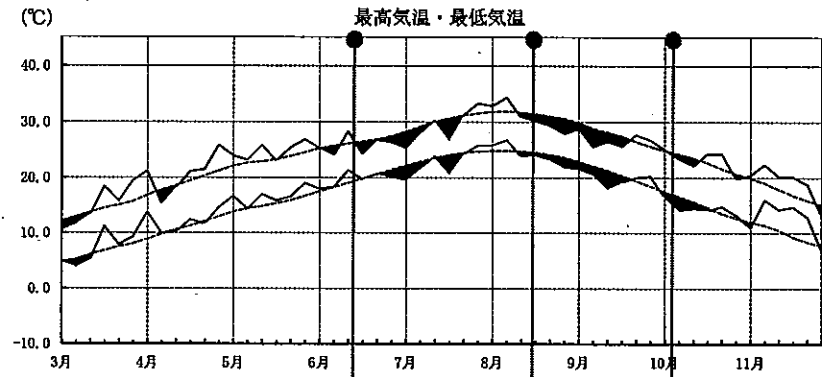


田植最盛期 5/25(Δ3)
 出穂最盛期 8/19(Δ1)
 刈取最盛期 10/8(Δ3)

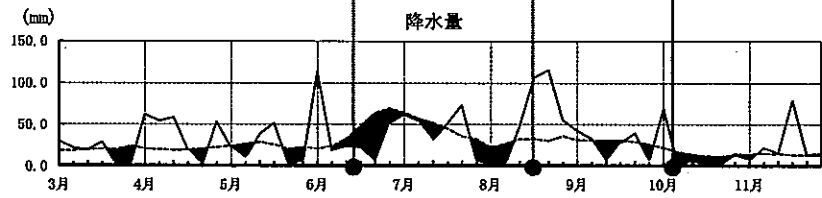
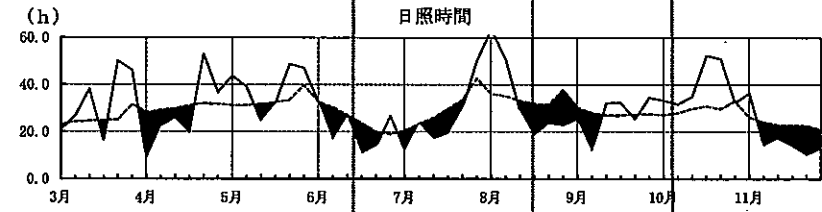
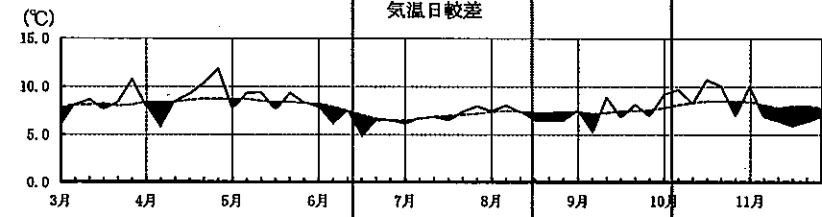


(福岡)

—— 当年値
----- 平年値

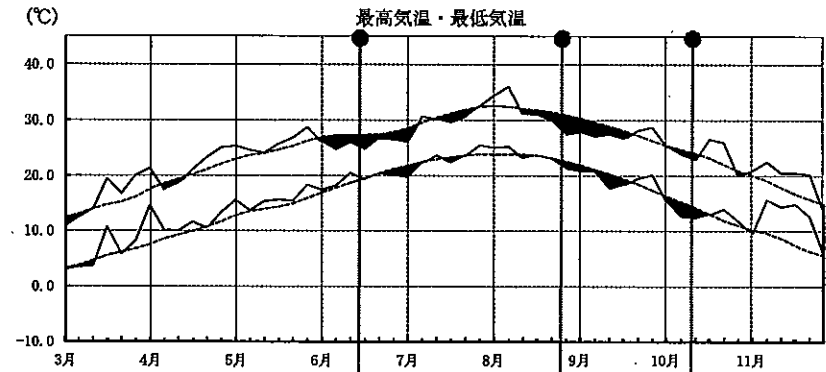


田植最盛期 6/17(0)
出穂最盛期 8/25(2)
刈取最盛期 10/6(3)

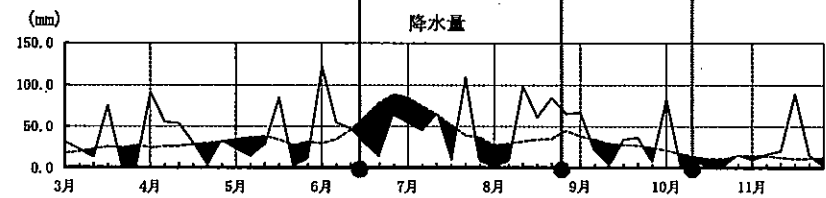
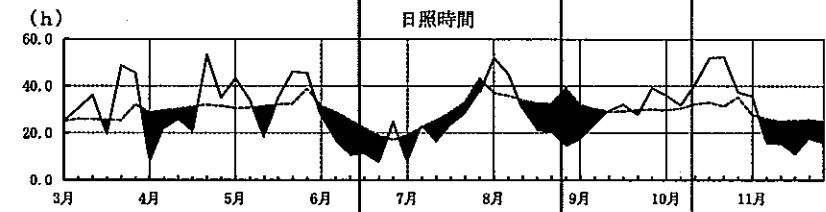
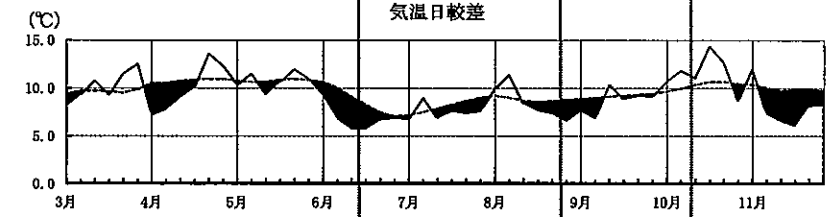


(佐賀)

—— 当年値
----- 平年値

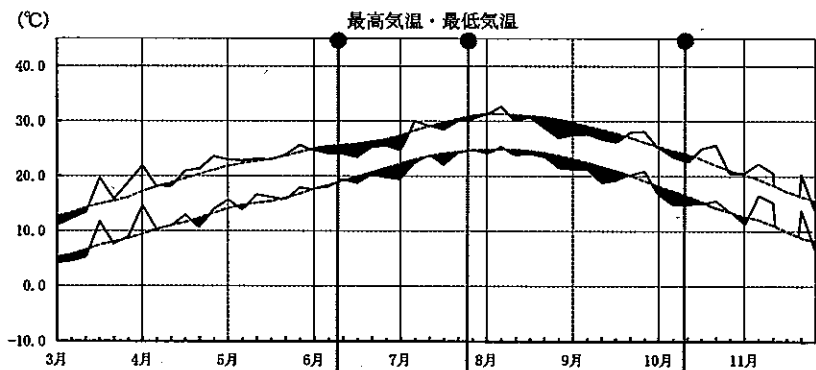


田植最盛期 6/19(Δ1)
出穂最盛期 8/29(1)
刈取最盛期 10/14(4)



(長崎)

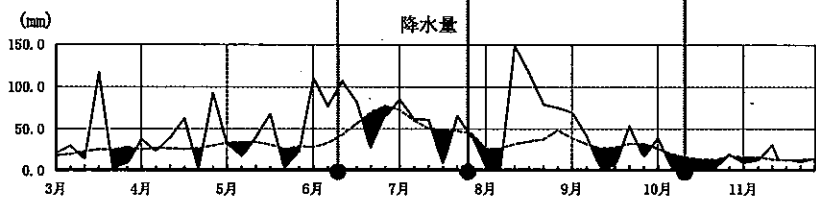
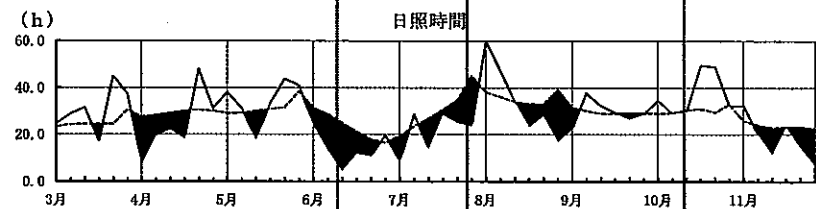
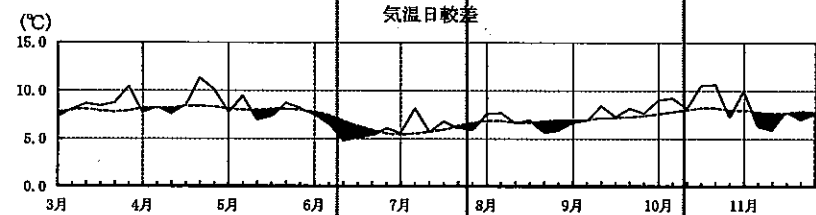
—— 当年値
----- 平年値



田植最盛期
6/14(Δ1)

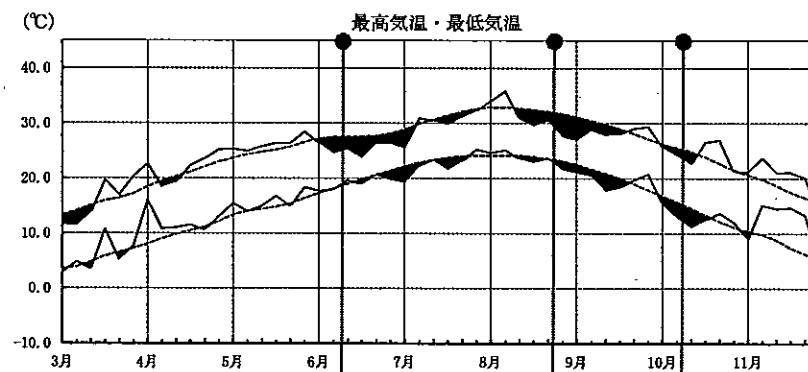
出穂最盛期
8/29(2)

刈取最盛期
10/14(2)



(熊本)

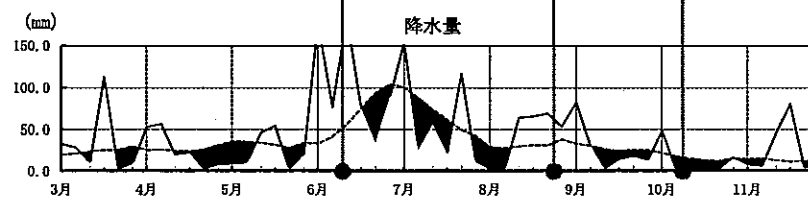
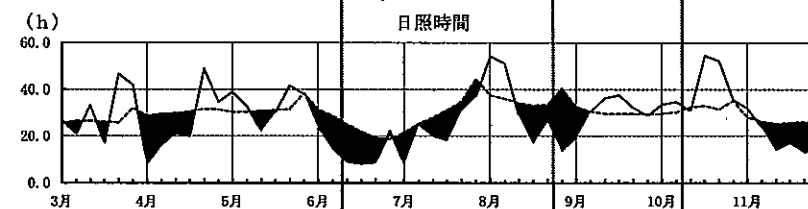
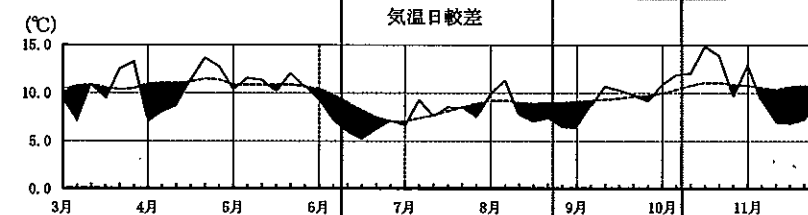
—— 当年値
----- 平年値



田植最盛期
6/14(0)

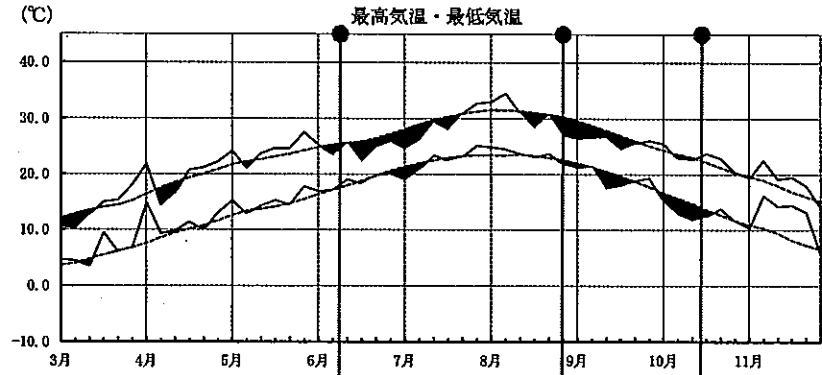
出穂最盛期
8/28(4)

刈取最盛期
10/11(3)

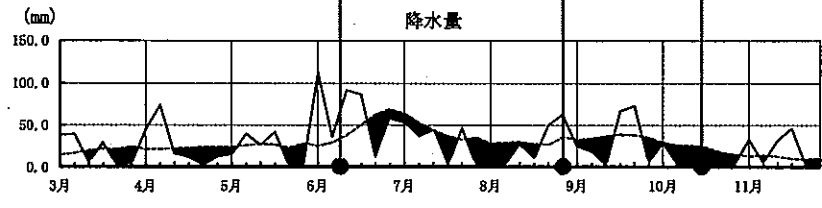
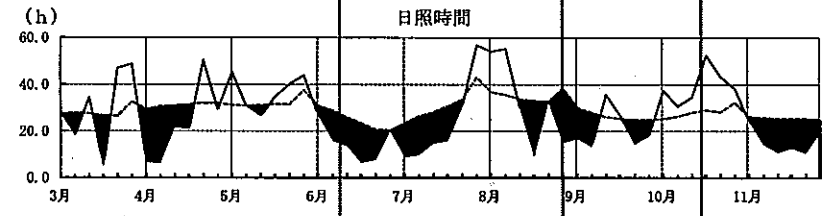
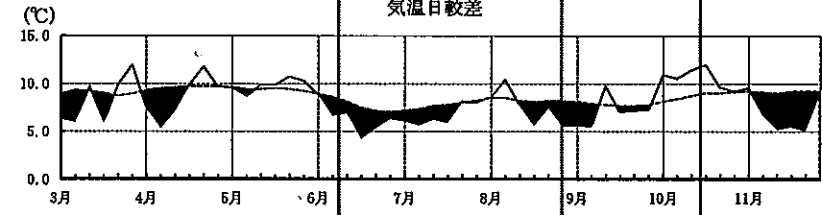


(大分)

—— 当年値
----- 平年値

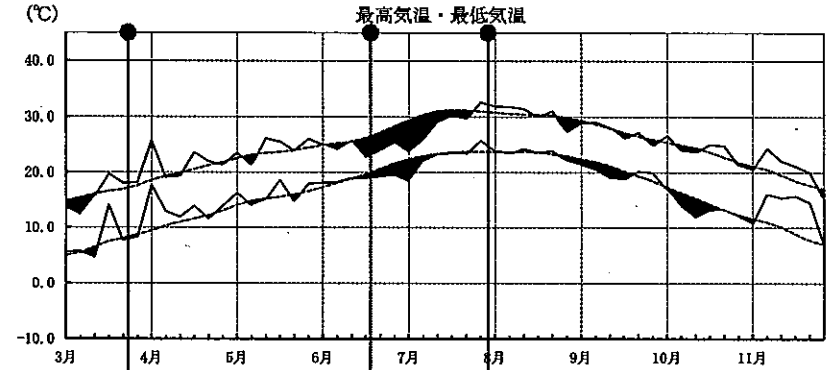


田植最盛期 6/13(Δ1)
 収穫最盛期 8/29(2)
 刈取最盛期 10/20(4)

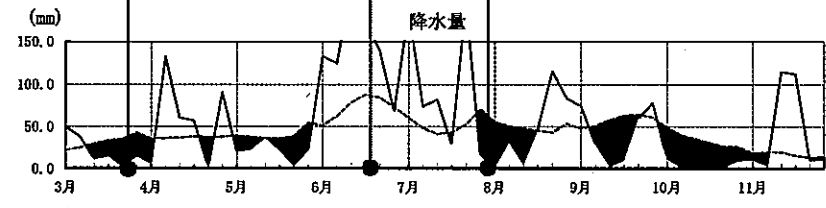
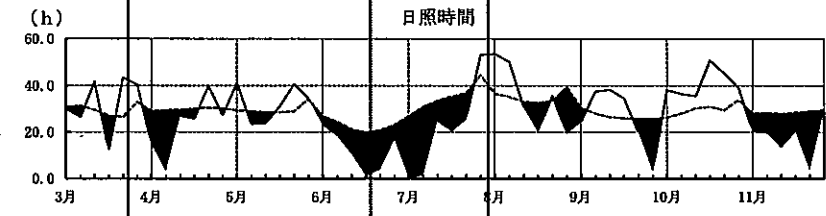
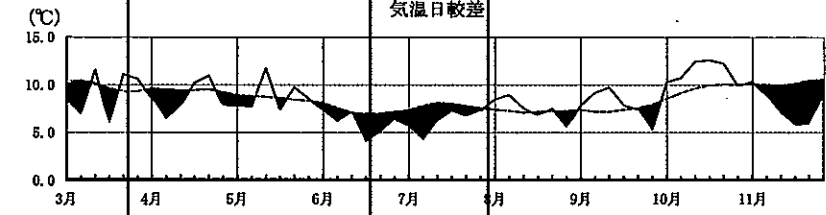


(宮崎) 早期

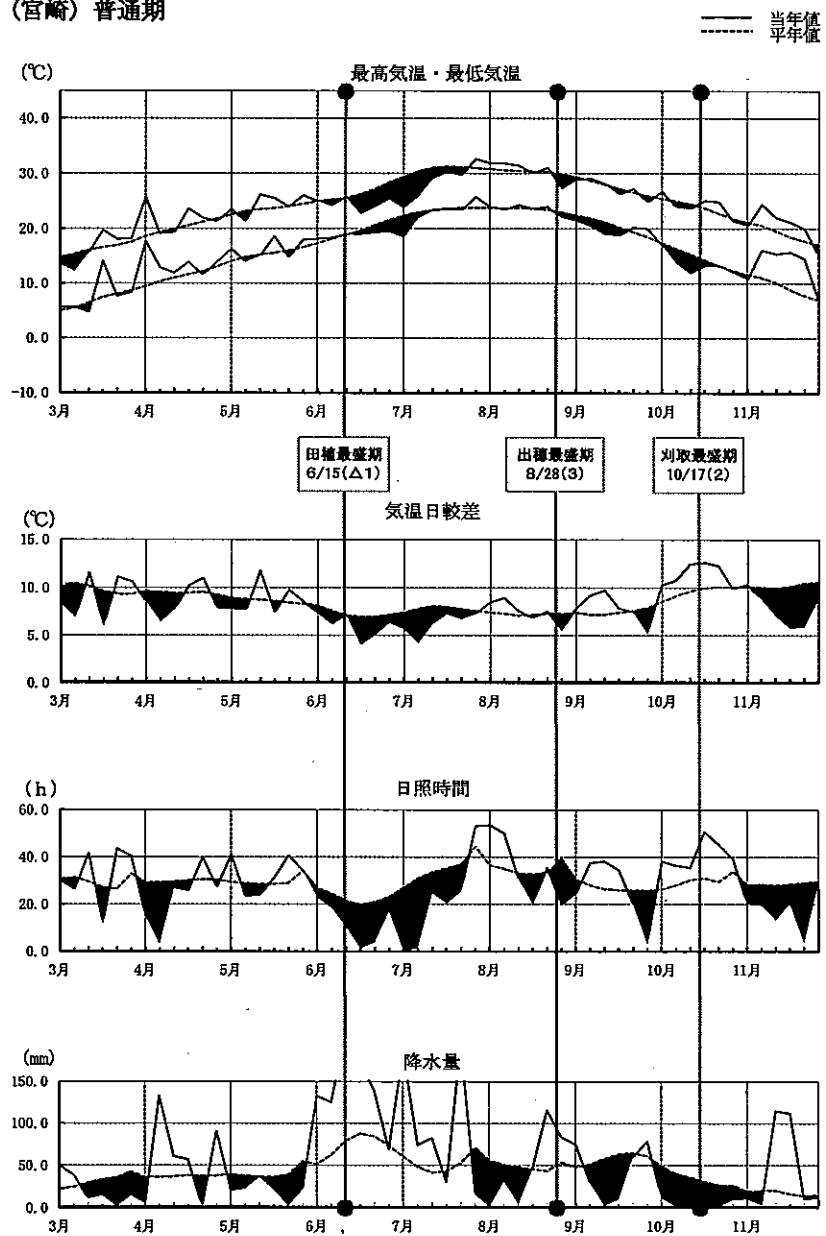
—— 当年値
----- 平年値



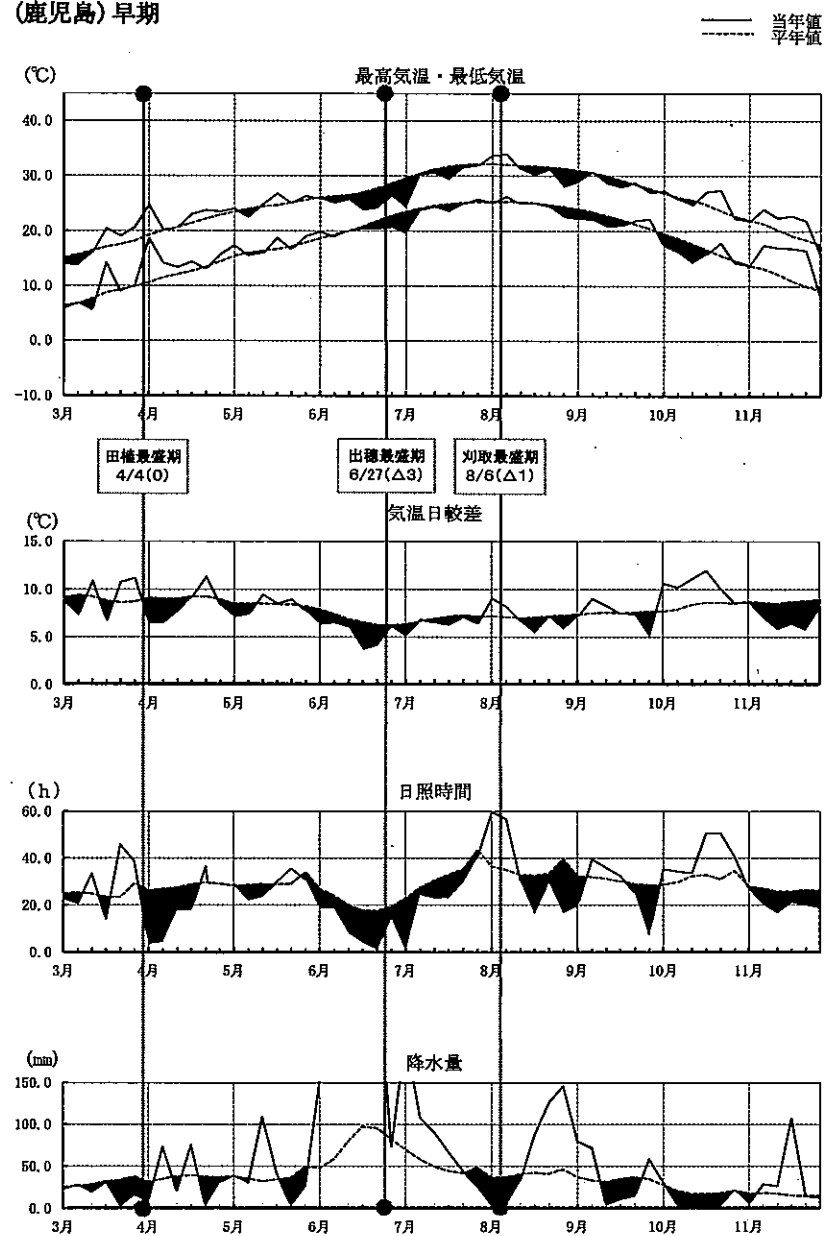
田植最盛期 3/27(Δ1)
 収穫最盛期 6/23(Δ6)
 刈取最盛期 8/2(Δ2)



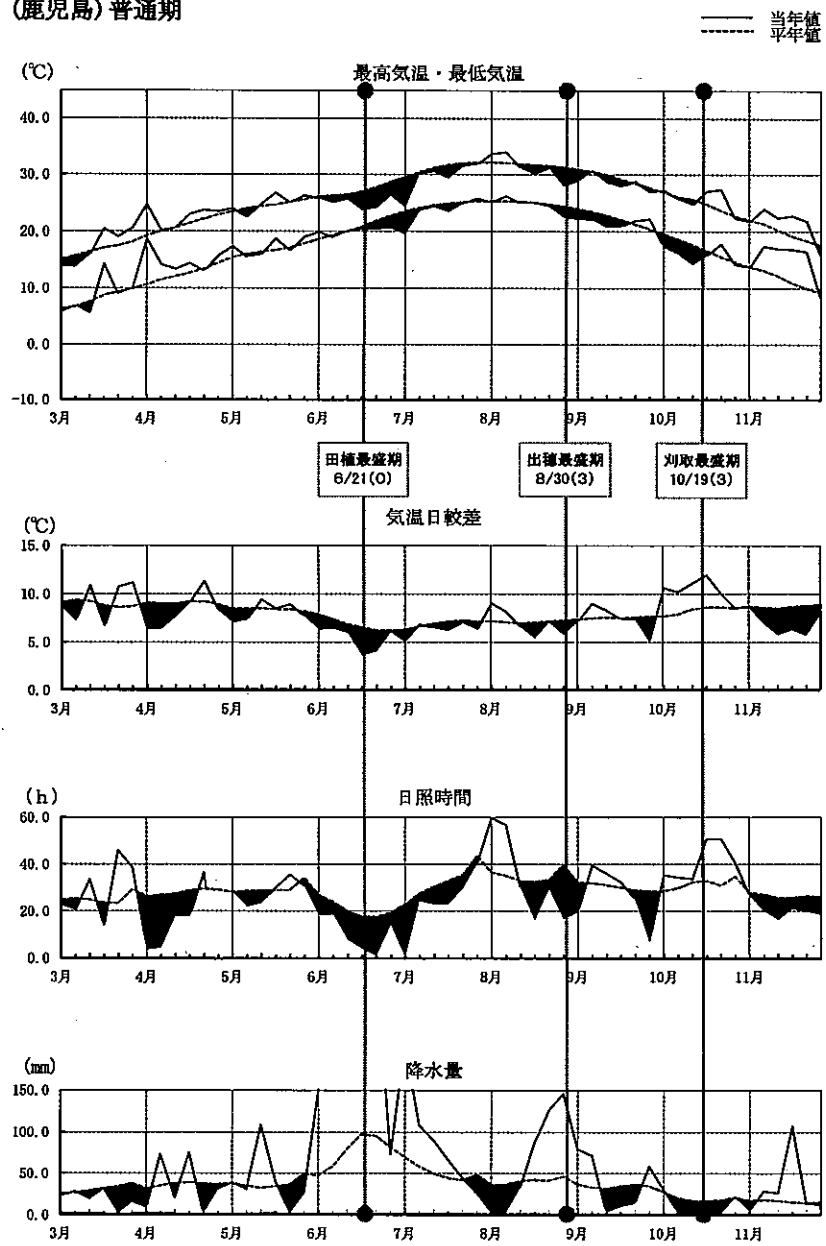
(宮崎) 普通期



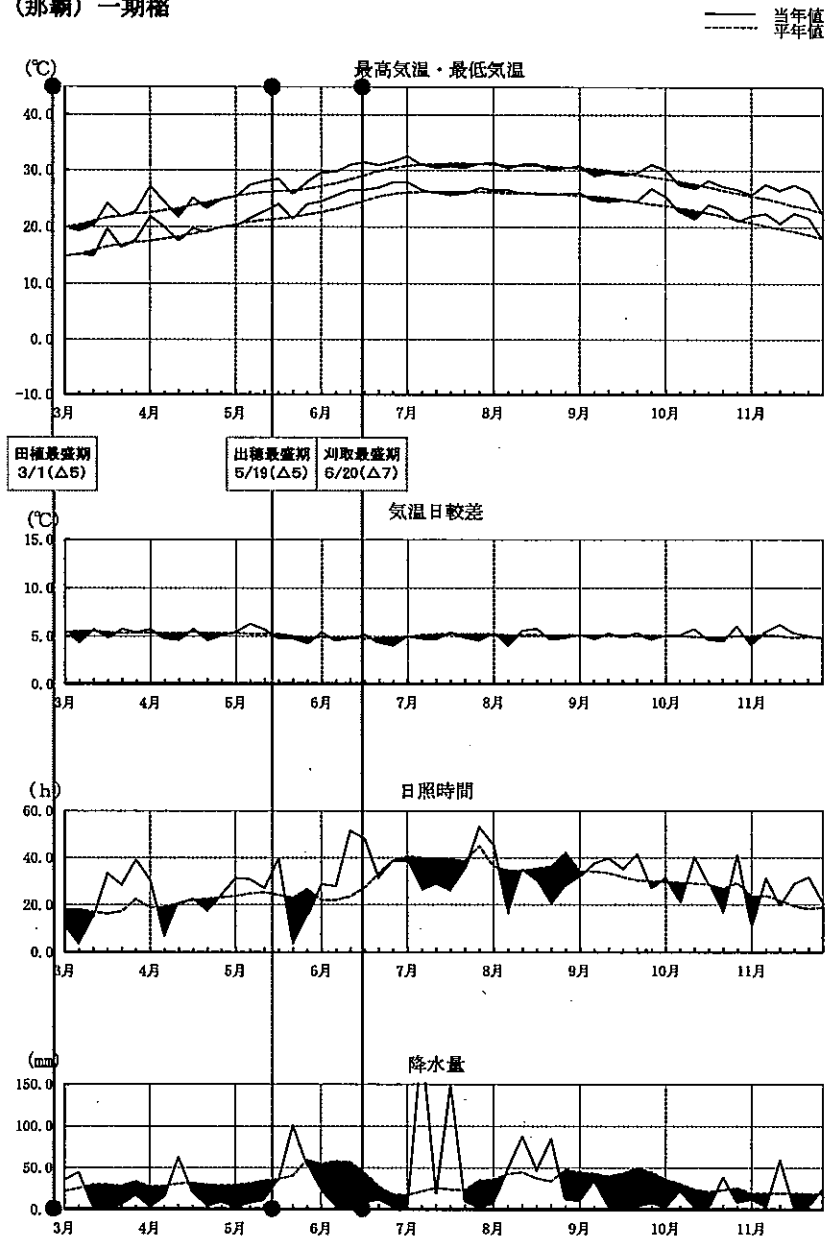
(鹿児島) 早期



(鹿児島) 普通期

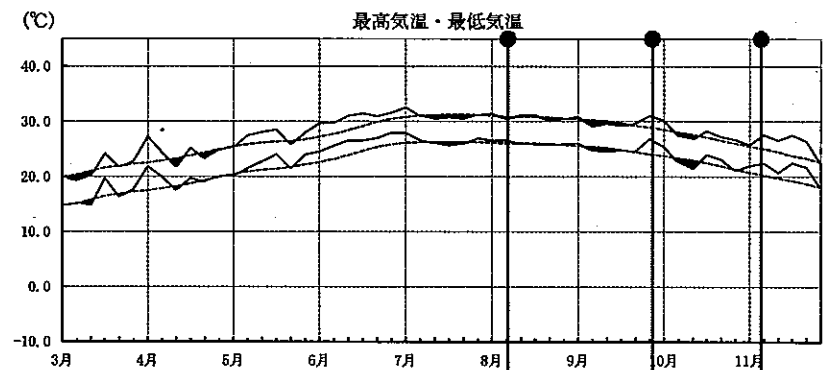


(那覇) 一期稲



(那覇) 二期稻

—— 当年値
 - - - 平年値



田植最盛期 8/9(Δ3)
 出穂最盛期 9/30(Δ5)
 刈取最盛期 11/9(Δ1)

