

# Virus Characteristics



Exists in various clinical forms ranging from per-acute, acute, subacute to chronic

01



A hemorrhagic infectious disease affecting both wild boars and domestic pigs

02

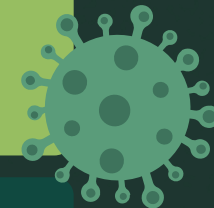


In Korea, the acute form with a 100% fatality rate is prevalent

03

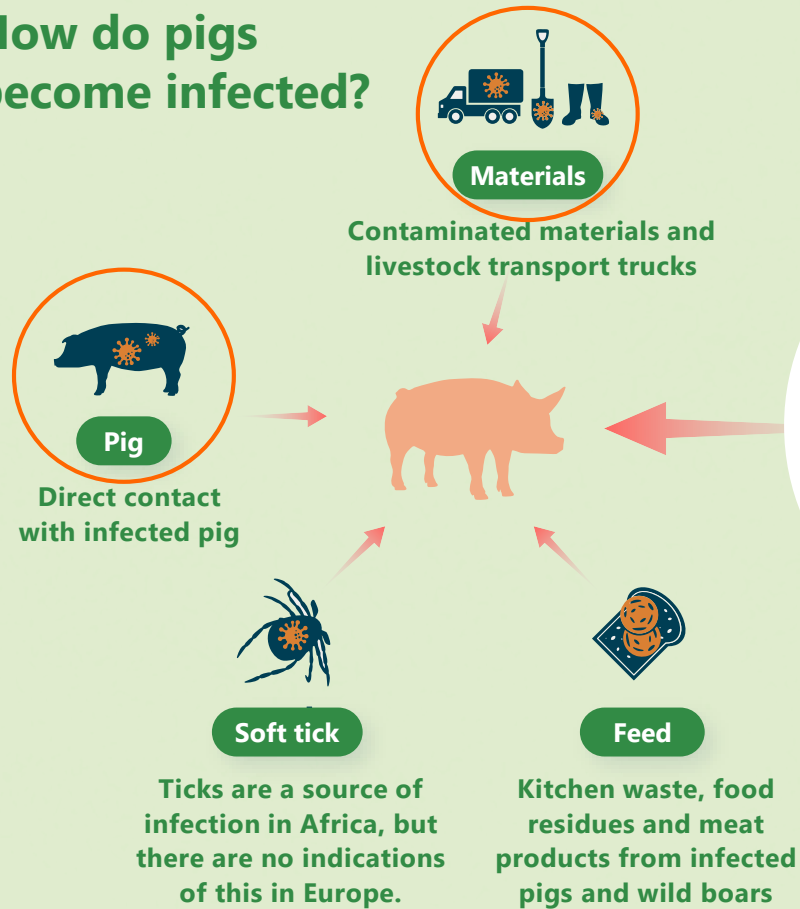
No effective treatment or vaccine has been developed to date  
→ **ASF outbreaks result in significant social and economic damage**

04



# Virus Characteristics

## How do pigs become infected?



## How do wild boars become infected?

