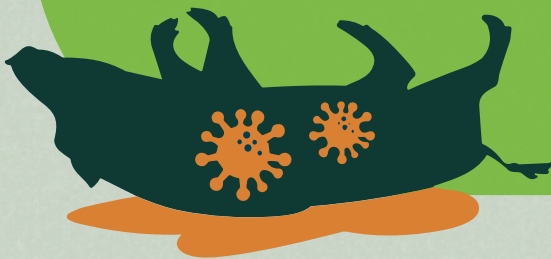


Transmission Characteristics

Natural Transmission

- ASF is transmitted through direct physical contact between infected and healthy individuals
- Transmission can also occur through contact with carcasses of infected animals



Artificial Transmission

- Contamination from using the same sampling tools without proper sterilization
- Failure to disinfect vehicle-hunting dogs
- Illegal transport of carcasses
- Movement to other areas after hunting in firearm- or dog-restricted zones without proper reporting

