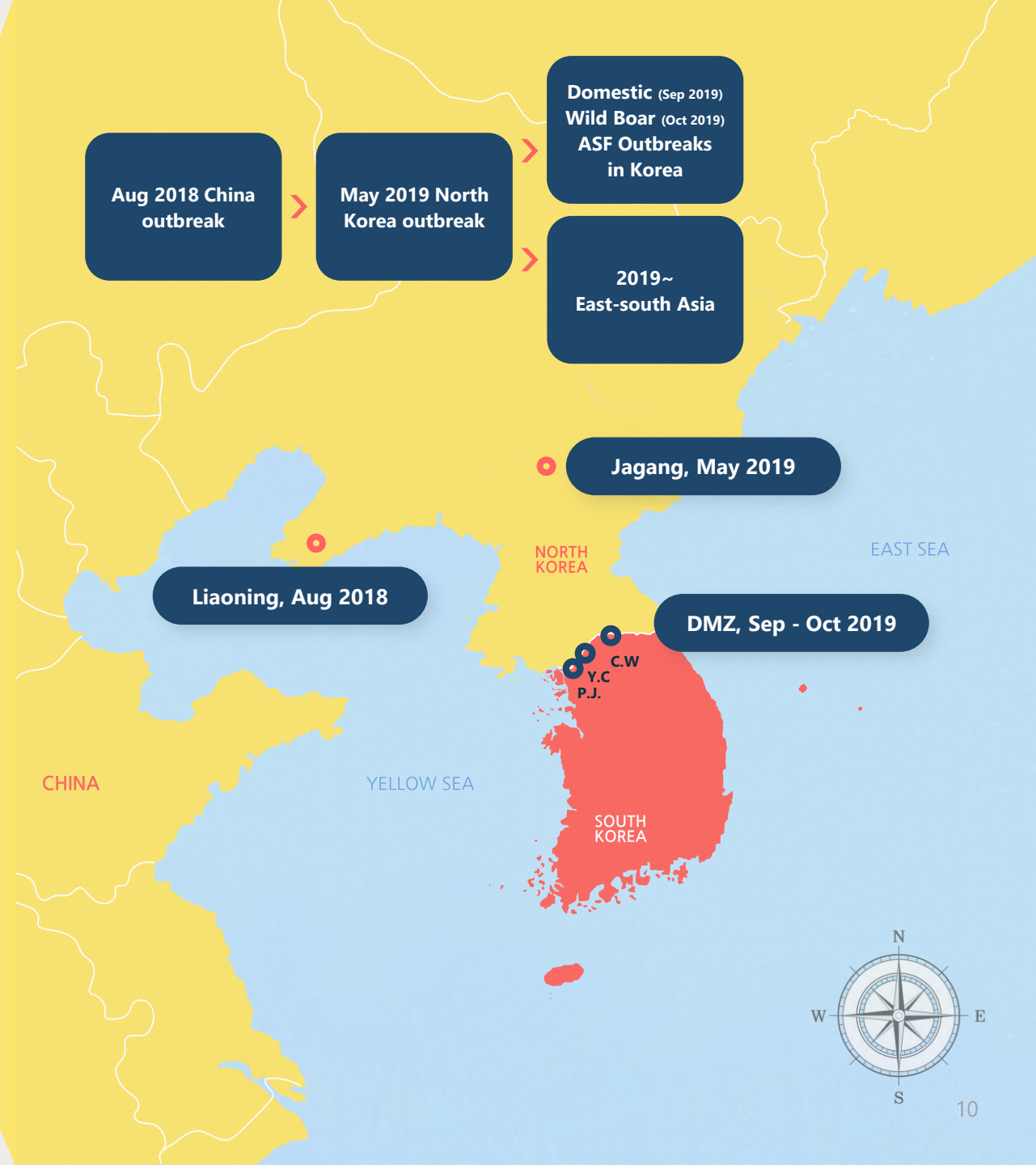
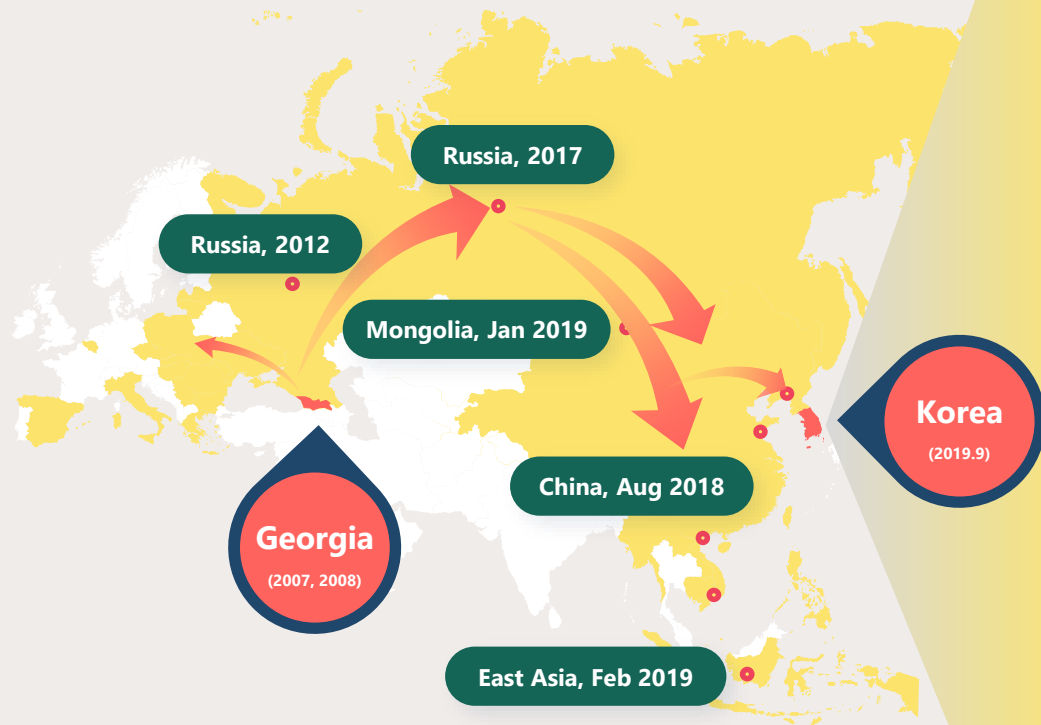


# Domestic Outbreak Status

Entry of ASF virus



2-1. Outbreak Status

2-2. Entry of the Virus

2-3. Transmission and Spread



# Domestic Outbreak Status

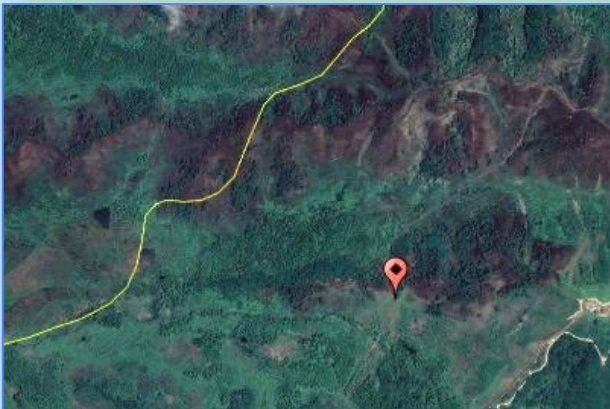
First case of ASF virus in Wild boar

2019.10.2 Pm 00:00

Report from a military unit : found a wild boar carcass in DMZ area

2019.10.3 Am 08:00

Confirmation of first ASF positive in wild boar



Found in military surveillance trail Altitude approx.  
172 meters 0.69km apart from the Northern limit line



First reported carcass found in DMZ,  
ASFv infection confirmed in Oct 3

위치 변경



Gangwon-do

Gyeonggi-do

Chungcheong  
buk-do

Chungcheong  
nam-do

Gyeongsang  
buk-do

Jeolla  
buk-do

Gyeongsang  
nam-do

# Domestic Outbreak Status

ASF spreading in wild boar

**30% of  
national territory**

● ASF Contaminated areas

Development of ASF outbreak(2019 ~ Jun 2025)

months

**69**

Since first ASF detection  
in wild boar (Sep 2019)

cases

**4,254+**

Reported as of Jun 2025  
(4 provinces, 43 counties)

Spread Direction

**East & South**

# Analysis of ASF Outbreak Characteristics in Wild Boars



	January	February	March	April	May	June	July	August	September	October	November	December	Total
Season	Winter			Spring			Summer			Autumn		Winter	
2019	0			0			0			33		22	55
2020	217			359			96			105		79	856
2021	263			249			164			160		128	964
2022	380			362			41			53		42	878
2023	126			254			65			198		92	735
2024	239			337			96			35		12	719
2025	22			20			5			0		0	47
Sum	1247			1581			467			584		375	4254