



Ministry of Environment
National Institute of
Wildlife Disease Control and Prevention

ASF management and Surveillance System for Wild Boars in Korea

- Part 3 -



Smart tracking and early detection to
stop ASF before it spreads.

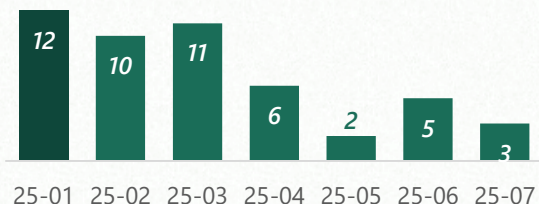
ASF Surveillance and diagnosis (diagnosis)

1 What is the Wildlife Disease Management System (WADIS)?

- An information management system for systematically handling wildlife-origin disease samples in response to nationally designated zoonotic disease outbreaks.
- Enables efficient administrative processing and rapid result notification through the WADIS platform.
- Applies statistical data processing to provide diverse and actionable insights.
- Used not only for ASF, but also for managing data on AI (Avian Influenza) and SFTS (Severe Fever with Thrombocytopenia Syndrome).

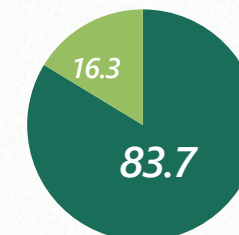
WADIS System Statistics Dashboard

ASF Positive Case Trend



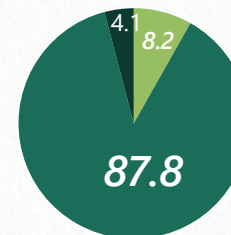
Type of ASF-Positive Individuals

- Carcasses (41 cases)
- Hunted (8 cases)

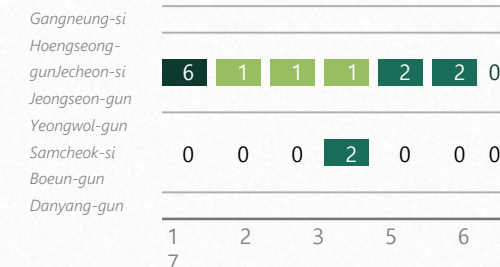


Testing Status by Sample Type

- Tissue (43 cases)
- Blood (4 cases)
- Others (2 cases)



Testing Status by Key Regions



2 ASFV Diagnostic System



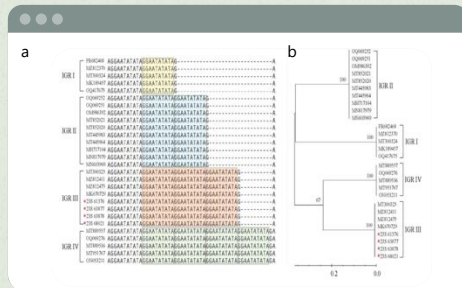
A Request Submission via WADIS



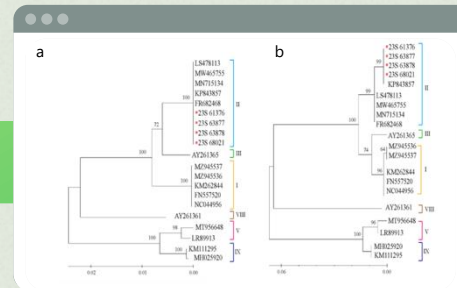
B Sample Transfer



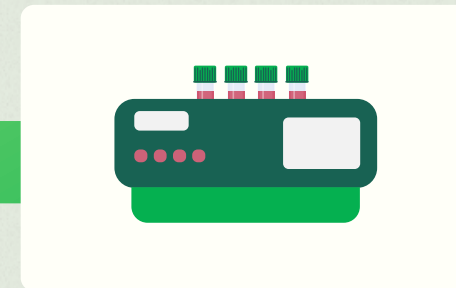
C DNA Extraction



F Additional Genetic Analysis for Mutation Surveillance



E Sequence (Genotype) Identification



D PPA, P72 convention PCR