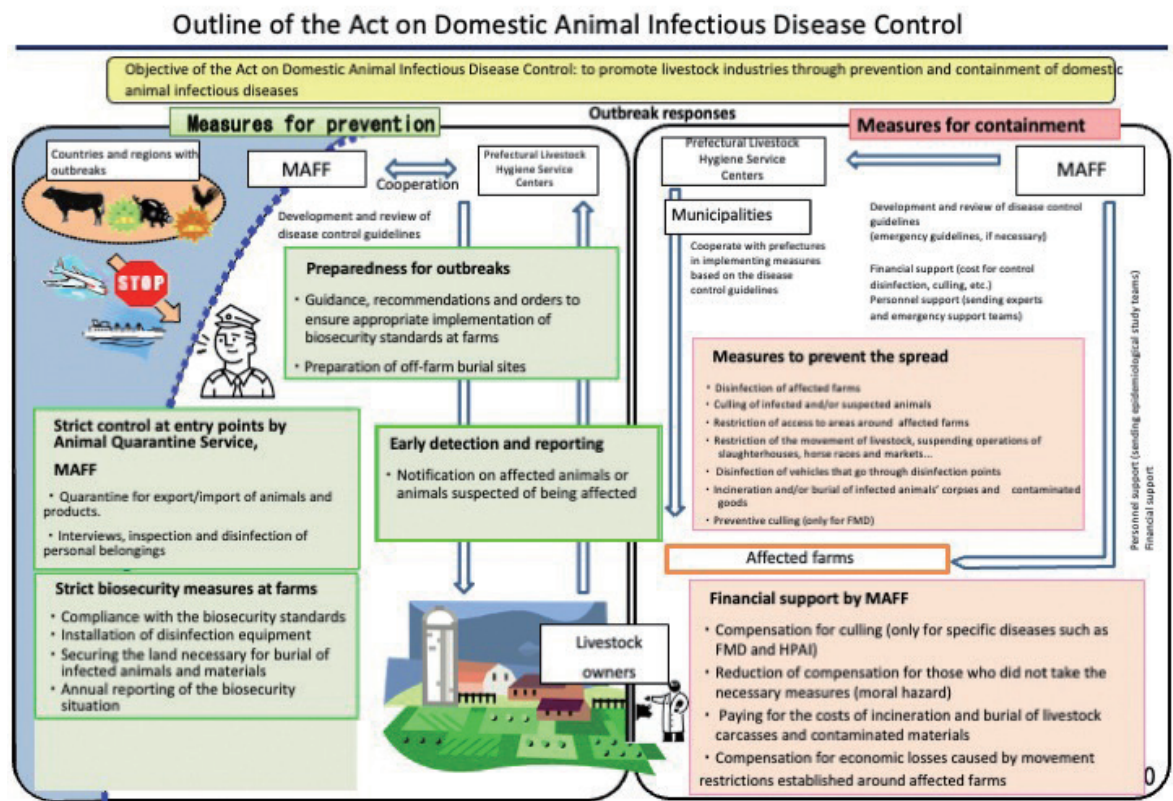


## 1 Relevant laws

Act on Domestic Animal Infectious Disease Control (Act No. 166 of 1951)	To promote livestock industries through prevention and containment of domestic animal infectious diseases.
Rabies Prevention Act (Act No. 247 of 1950)	To prevent the outbreak of rabies, to control its spread, and to eradicate rabies so as to improve public health and contribute to public welfare.
Act on the Prevention of Infectious Diseases and Medical Care for Patients with Infectious Diseases (Act No. 114 of 1998)	To provide for necessary measures concerning the prevention of infectious diseases and medical care for patients with infectious diseases in order to prevent outbreaks and the spreading of infectious diseases, and thereby to improve and promote public health.
Livestock Hygiene Service Centers Act (Act No. 12 of 1950)	To promote the livestock industry by improving the hygiene of livestock in the countryside through the prevention of domestic animal infectious diseases and by carrying out the tests and inspections necessary for the health and hygiene of livestock.
Act on Special Measures concerning Measures against Bovine Spongiform Encephalopathy (Act No. 70 of 2002)	To prevent the occurrence and spread of Bovine Spongiform Encephalopathy, thereby facilitating the protection of people's health as well as the sound development of beef cattle production and dairy farming, and beef-related manufacturing, processing, distribution, sales and food service businesses.



## 2 List of the Notifiable Infectious Disease

Disease	Animal species*	
	Art.2 of the Act	Art.1 of the Government Ordinance
Rinderpest	Cattle, sheep, goat, pig	Water buffalo, deer, wild boar
Contagious bovine pleuropneumonia	Cattle	Water buffalo, deer
Foot and mouth disease	Cattle, sheep, goat, pig	Water buffalo, deer, wild boar
Infectious encephalitis	Cattle, horse, sheep, goat, pig	Water buffalo, deer, wild boar
Rabies	Cattle, horse, sheep, goat, pig	Water buffalo, deer, wild boar
Vesicular stomatitis	Cattle, horse, pig	Water buffalo, deer, wild boar
Rift valley fever	Cattle, sheep, goat	Water buffalo, deer
Anthrax	Cattle, horse, sheep, goat, pig	Water buffalo, deer, wild boar
Hemorrhagic septicemia	Cattle, sheep, goat, pig	Water buffalo, deer, wild boar
Brucellosis	Cattle, sheep, goat, pig	Water buffalo, deer, wild boar
Tuberculosis	Cattle, goat	Water buffalo, deer
Johne's disease	Cattle, sheep, goat	Water buffalo, deer
Piroplasmosis* (limited to that caused by pathogens prescribed by the Ministerial Ordinance)	Cattle, horse	Water buffalo, deer
Anaplasmosis* (limited to that caused by pathogens prescribed by the Ministerial Ordinance)	Cattle	Water buffalo, deer
Transmissible spongiform encephalopathy	Cattle, sheep, goat	Water buffalo, deer
Glanders	Horse	
Equine infectious anemia	Horse	
African horse sickness	Horse	
Peste des petits ruminants	Sheep, goat	Deer
Classical swine fever	Pig	Wild boar
African swine fever	Pig	Wild boar
Swine vesicular disease	Pig	Wild boar
Fowl cholera	Chicken, duck, quail	Turkey
Highly pathogenic avian influenza	Chicken, duck, quail	Pheasant, ostrich, guinea fowl, turkey
Low pathogenic avian influenza	Chicken, duck, quail	Pheasant, ostrich, guinea fowl, turkey
Newcastle disease (limited to that designated as highly pathogenic by the Ordinance)	Chicken, duck, quail	Turkey
Avian Salmonellosis* (limited to that caused by pathogens prescribed by the Ministerial Ordinance)	Chicken, duck, quail	Turkey
Foulbrood	Honey bee	

\*The following diseases are deemed as the Infectious Diseases when they are caused by the causative agents designated by the Ministerial Ordinance.

Piroplasmosis	The disease caused by <i>Babesia bigemina</i> , <i>B. bovis</i> , <i>B. equi</i> , <i>B. caballi</i> , <i>Theilaria parva</i> and <i>T. annulata</i>
Anaplasmosis	The disease caused by <i>Anaplasma marginale</i> .
Avian Salmonellosis	The disease caused by <i>Salmonella enterica</i> serovar <i>Gallinarum</i> biovar <i>Pullorum</i> or <i>Gallinarum</i>

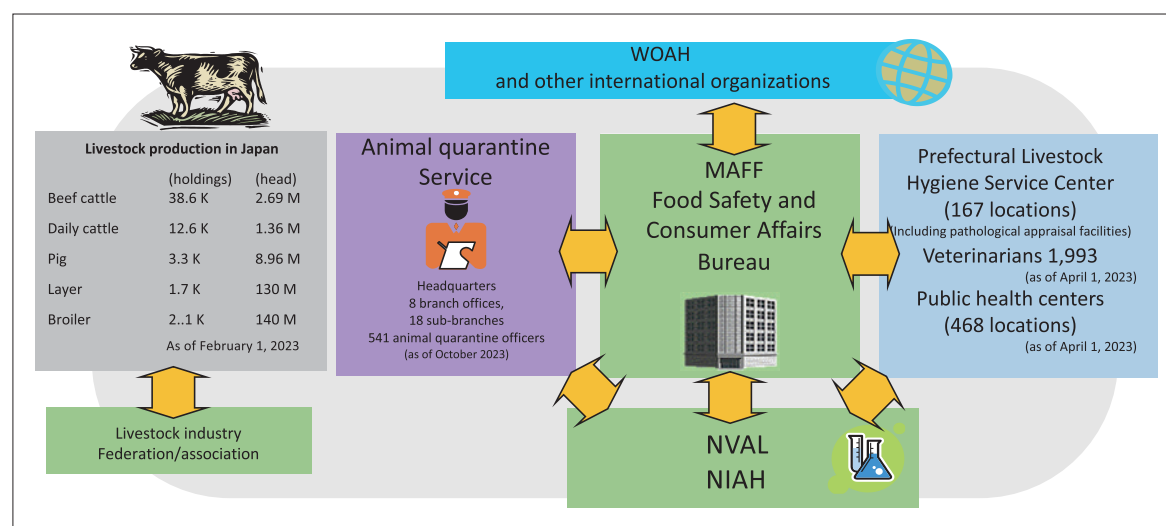
### 3 List of Notifiable Infectious Disease

Disease	Animal species*
Bluetongue	Cattle, water buffalo, sheep, goat, deer
Akabane disease	Cattle, water buffalo, sheep, goat
Malignant catarrhal fever	Cattle, water buffalo, deer, sheep
Chuzan disease	Cattle, water buffalo, goat
Lumpy skin disease	Cattle, water buffalo
Bovine viral diarrhea	Cattle, water buffalo
Infectious bovine rhinotracheitis	Cattle, water buffalo
Bovine leukosis	Cattle, water buffalo
Aino virus infection	Cattle, water buffalo
Ibaraki disease	Cattle, water buffalo
Bovine papular stomatitis	Cattle, water buffalo
Bovine ephemeral fever	Cattle, water buffalo
Melioidosis	Cattle, water buffalo, deer, horse, sheep, goat, pig, wild boar
Tetanus	Cattle, water buffalo, deer, horse
Blackleg	Cattle, water buffalo, deer, sheep, goat, pig, wild boar
Leptospirosis	Cattle, water buffalo, deer, pig, wild boar, dog
Salmonellosis	Cattle, water buffalo, deer, pig, wild boar, chicken, duck, turkey, quail
Bovine campylobacteriosis	Cattle, water buffalo
Trypanosomiasis	Cattle, water buffalo, horse
Tricomoniasis	Cattle, water buffalo
Neosporosis	Cattle, water buffalo
Cattle grub	Cattle, water buffalo
Nipah virus infection	Horse, pig, wild boar
Equine influenza	Horse
Equine viral arteritis	Horse
Equine rhinopneumonitis	Horse
Equine morbilli virus pneumonia	Horse
Horse pox	Horse
Tularemia	Horse, sheep, pig, wild boar, rabbit
Contagious equine metritis	Horse
Equine paratyphoid	Horse
Epizootic lymphangitis	Horse
Contagious ecthyma	Sheep, goat, deer
Nairobi sheep disease	Sheep, goat
Sheep pox	Sheep
Maedi visna	Sheep

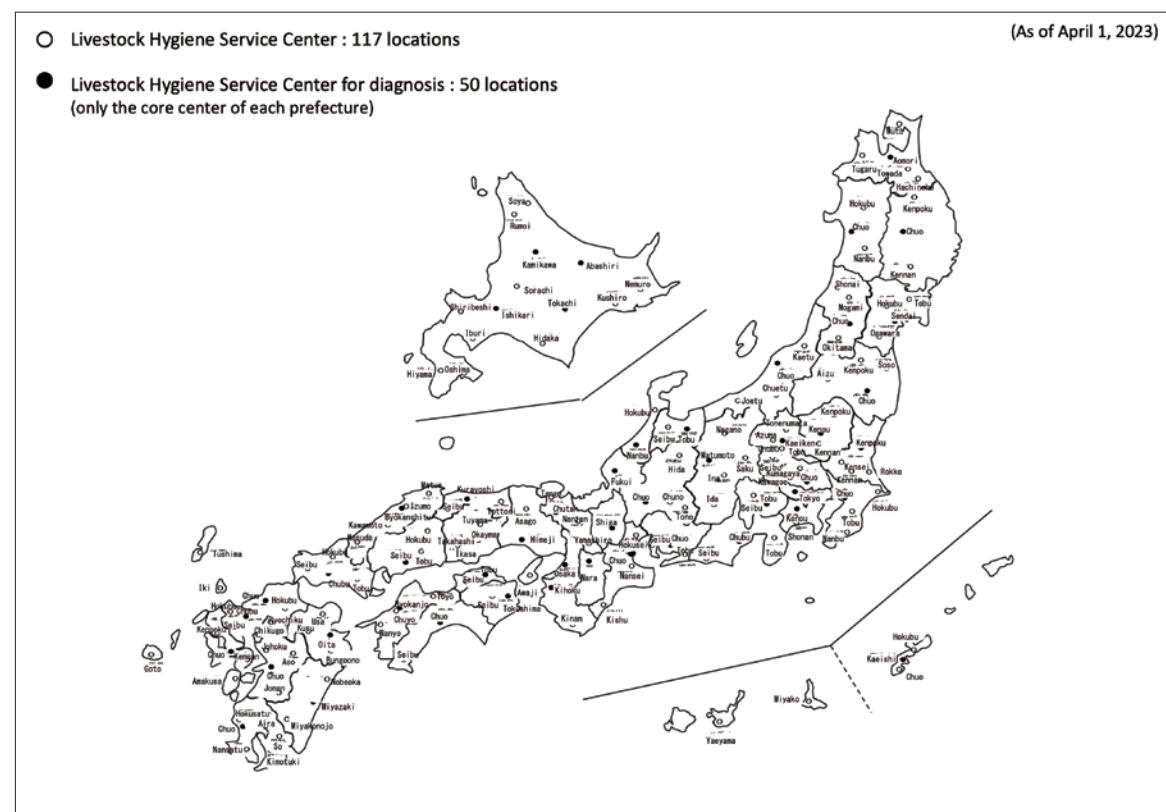
Contagious agalactia	Sheep, goat
Enzootic abortion of ewes	Sheep
Toxoplasmosis	Sheep, goat, pig, wild boar
Mange	Sheep
Goat pox	Goat
Caprine arthritis/encephalomyelitis	Goat
Contagious caprine pleuropneumonia	Goat
Aujeszky's disease	Pig, wild boar
Transmissible gastroenteritis	Pig, wild boar
Swine enteroviral encephalomyelitis	Pig, wild boar
Porcine reproductive and respiratory syndrome	Pig, wild boar
Swine vesicular exanthema	Pig, wild boar
Porcine epidemic diarrhea	Pig, wild boar
Atrophic rhinitis	Pig, wild boar
Swine erysipelas	Pig, wild boar
Swine dysentery	Pig, wild boar
Avian influenza	Chicken, duck, turkey, quail
Low pathogenic Newcastle disease	Chicken, duck, turkey, quail
Avian pox	Chicken, quail
Marek's disease	Chicken, quail
Infectious bronchitis	Chicken
Infectious laryngotracheitis	Chicken
Infectious bursal disease	Chicken
Avian leukosis	Chicken
Avian tuberculosis	Chicken, duck, turkey, quail
Avian mycoplasmosis	Chicken, turkey
Leucocytozoonosis	Chicken
Duck hepatitis	Duck
Duck viral enteritis	Duck
Rabbit haemorrhagic disease	Rabbit
Myxomatosis	Rabbit
Varroosis	Honey bee
Chalkbrood	Honey bee
Acariosis	Honey bee
Nosemosis	Honey bee

\*Animal species are the ones designated in the Article 2 of the Ministerial Ordinance for Enforcement of the Act on Domestic Animal Infectious Diseases Control

### 3 Animal health systems in Japan



#### Location of livestock hygiene service centers (LHSCs) in Japan



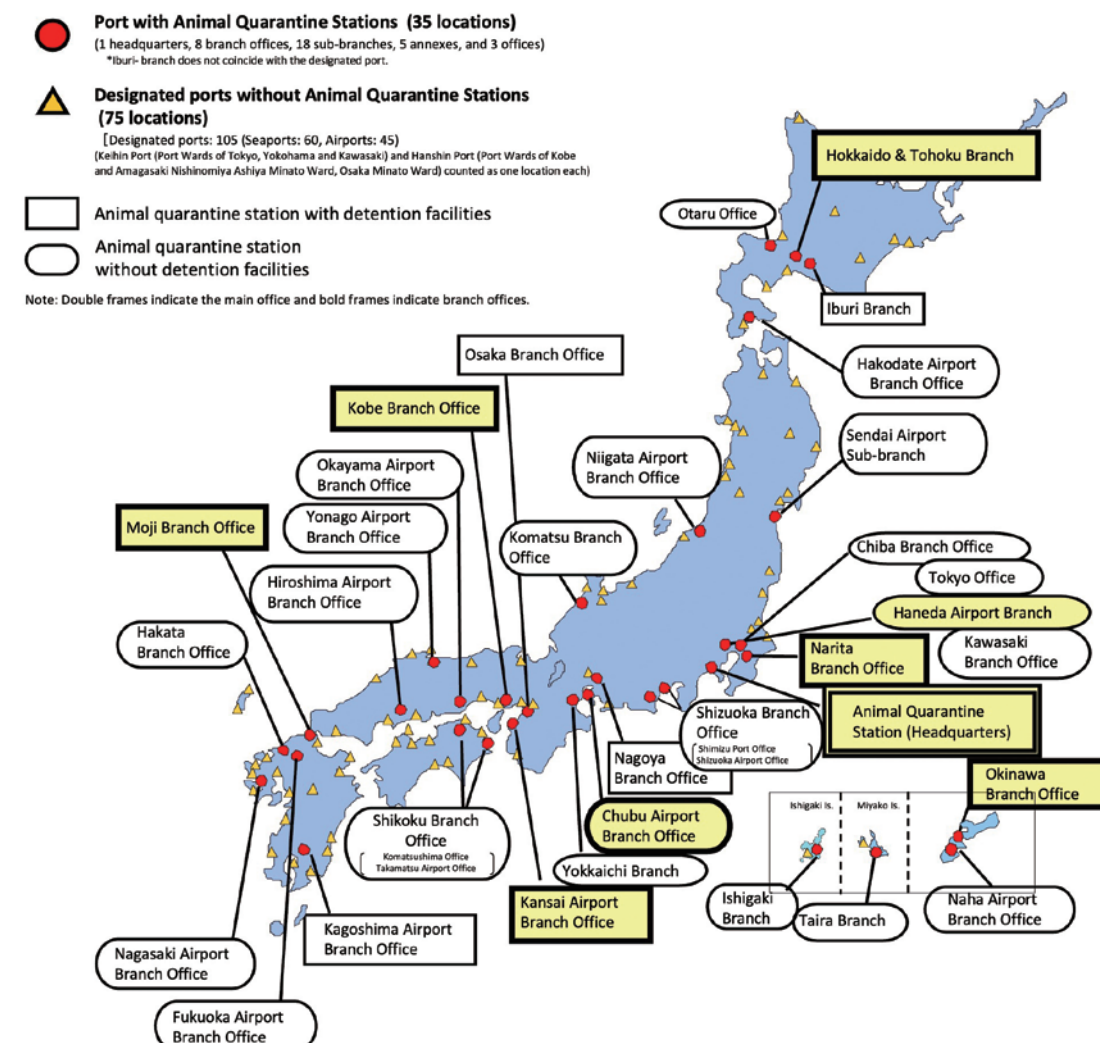
#### Animal Quarantine Stations and designated ports

Animal Quarantine Stations (8 branches and 18 sub-branches nationwide, in addition to the main office in Yokohama) inspect imported and exported animals and livestock products and implement quarantine measures. At designated ports and airports.



#### Animal Quarantine Stations and designated ports

(as of January 2023)





### National Veterinary Assay Laboratory

The National Veterinary Assay Laboratory (NVAL) is responsible for assuring the quality, efficacy, and safety of veterinary medical products, quasi-drugs, medical devices, and Regenerative, Cellular therapy, and Gene therapy products. NVAL perform technical examination tests and investigations, and provide guidance and advice at all stages, from development to sale and use.



### National Institute of Animal Health of National Agriculture and Food Research Organization

The National Institute of Animal Health (NIAH) covers a wide range of research from basics to development on the prevention, diagnosis, and treatment of animal diseases. As the only dedicated research institute for animal diseases in Japan, NIAH also conducts confirmatory tests for infectious diseases of domestic animals and produces and distributes diagnostic reagents and other biological products for veterinary use.



### Reference websites

#### Information on animal health; Food Safety and Consumer Affairs Bureau, MAFF

[https://www.maff.go.jp/j/syouan/douei/katiku\\_yobo/index.html](https://www.maff.go.jp/j/syouan/douei/katiku_yobo/index.html)



#### Animal Quarantine Service, MAFF

<https://www.maff.go.jp/aqs/index.html>



#### National Veterinary Assay Laboratory, MAFF

<https://www.maff.go.jp/nval/>



#### National Institute of Animal Health of National Agriculture and Food Research Organization

<https://www.naro.go.jp/laboratory/niah/>



Photo courtesy of Aichi Prefecture





Shooting location: Hiraguchi Pig Farm  
(Wakasa-town, Tottori-Pref.)  
Photo by: Misaki Amano



Cover photo  
Shooting location: Farms Chiyoda  
Photo by: Chizuru Takada

---

## Annual Report on Animal Infectious Disease Surveillance in 2022

Issued: February 10, 2024

Issued by .....Animal Health Division, Food Safety and Consumer Affairs Bureau, Ministry of Agriculture, Forestry and Fisheries

Edited by .....National Institute of Animal Health, National Agriculture and Food Research Organization

Design and Printing .....Sohokkai Co.