



Day trip
Car (taxi / rental car)

the largest lake in Japan

Experiencing the fisheries and agriculture fostered by "Lake Biwa"

Let's Travel to COUNTRYSIDE in KANSAI

Experiencing the charms of farming, mountain, and fishing villages

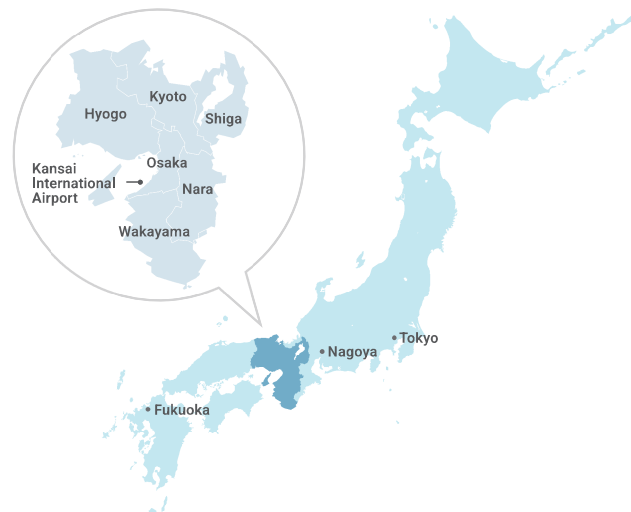
About

Let's Travel to COUNTRYSIDE in KANSAI

In this brochure, staff of the Ministry of Agriculture, Forestry, and Fisheries working in the Kansai region introduce recommended routes to help you discover the charms of rural mountain and fishing villages.

While visiting "Globally Important Agricultural Heritage Systems" and "World Heritage Irrigation Structures" designated by the global institutions as well as "Japanese Nationally Important Agricultural Heritage Systems" and "Connecting Rice Terraces Heritage" designated by the Japanese government, you can experience the life in farming, mountain, and fishing villages and enjoy the beautiful landscapes created by agriculture.

Please experience the charms of farming, mountain, and fishing villages that have been faithfully inherited and diligently protected to this day.



近畿農政局

Kinki Regional Agricultural Administration Office

Inquiry nousonshinkou_isan03@maff.go.jp

Chojiburocho, Shimochoujiya-machi Sagaru, Nishinotoin Street, Kamigyo Ward,
Kyoto City, 602-8054
<https://www.maff.go.jp/kinki/>

*This brochure is not an advertisement for tour package products. This brochure just introduces a recommended travel route for your reference.
Please confirm the location, business hours, contents of experience activities, and other relevant information for your destinations on their respective websites, social media, etc. in advance.



"Biwa lake to land integrated system" in the Lake Biwa region is a designated [GIAHS] and [J-NIAHS] site.

Japanese
Nationally Important
Agricultural
Heritage Systems

Globally
Important
Agricultural
Heritage Systems

Connecting
Rice
Terraces
Heritage

Experiencing the fisheries and agriculture fostered by "Lake Biwa", the largest lake in Japan

One of the Globally Important Agricultural Heritage Systems Sites designated by the FAO. While experiencing the charms of traditional agriculture and fisheries systems and the natural blessings of interwoven fisheries and agriculture developed in Lake Biwa, the largest lake in Japan, enjoy the local flavors on this trip. You can feel the majestic landscapes created by the lake and mountains.



Shiga Pref.

Length of stay
Day trip

Transportation method
Car (taxi / rental car)

Season
Spring - Autumn

Day Trip

- 8:30
Depart from Kyoto Station
- 9:30
① Lake Biwa Museum
- 12:00
② Uka Rokkon
(sightseeing / lunch)
- 13:55
Depart from Nagahama Port
- ③ Chikubu Island cruising
(Approx. 1 hour
in Chikubu Island)
- 16:25
Arrive at Imazu Port
- 16:45
④ Ukawa
Rice Terraces
- Around 18:40
Arrive at Kyoto Station



② Uka Rokkon

You can experience a seven-course meal, which embodies the philosophy that "proper food can serve as natural medicine", by combining the rich seasonal delicacies of the lake area with traditional fermented foods.

713 Gokashokawanami-cho, Higashiomori City, Shiga Prefecture
Lunch: 11:30 - 16:00 / Dinner: 18:00 onward (Reservation required)
Closed: Tuesdays and Wednesdays



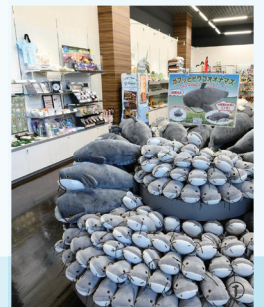
① Lake Biwa Museum

In this museum featuring the theme of "Lake and Humans", including the "Lake Biwa System" which is a designated site of Globally Important Agricultural Heritage Systems, you can learn the history, culture and ecosystem of "Mother Lake Biwa", by experiencing how people's lifestyles have been developed by using the bountiful blessings of the lake.

1091 Oroshimo-cho, Kusatsu City, Shiga Prefecture
9:30 - 17:00 (last entry: 16:00) Closed: Mondays



For more information



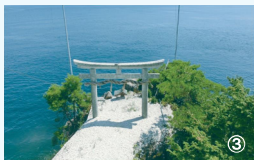
④ Ukawa Rice Terraces

Located at the foot of the Hira Mountain range along the western shore of Lake Biwa, these rice terraces are, uniquely, very close to the lake, with the breathtaking view of Lake Biwa spreading underneath the terraces.

Ukawa, Takashima City, Shiga Prefecture



For more information



③ Chikubu Island

Home to Hogenji Temple and Tsukubusuma Shrine, commemorating one of Japan's three major Benzaiten. In addition to this temple and the shrine, this island also boasts many historically significant structures, including "Karamon Gate" designated as a National Treasure, "Kannon Hall" designated as an Important Cultural Property, and "Three-story Pagoda" restored in 2000 after 350 years.

Chikubushima, Hayasaki-cho, Nagahama City, Shiga Prefecture



Highly recommended
SPOT