

\Go local!/\



Deep



JAPAN

THE NOHAKU EXPERIENCE

Divine!

Just like us!

SHIGA
KYOTO
OSAKA
HYOGO
NARA
WAKAYAMA

KINKI
COUNTRYSIDE STAY GUIDE BOOK

What is "Nohaku"?



Daikoku-san

Ebisu-san! A pleasure to see you!
On your own today or are the other five Lucky Gods with you?

No, Daikoku-san, it's just you and me. I dropped by because I thought you might like to know about some wonderful places to visit. These days, the "countryside stay" experience is called "Nohaku." Are you familiar with the term?



Ebisu-san



Can't say I am. But it sounds like fun. The countryside has so much to offer!

It certainly does! Think of the Kinki region, and maybe the first places that come to mind are the big cities: Kyoto, Osaka, Nara, Kobe, and so forth. But staying in the city's not Nohaku. No, no. Nohaku takes you out of the city, off the beaten track, and deep into the countryside with its local delicacies, fascinating history, memorable experiences, and fabulous scenery.



Wow! Give me a scene or two to focus on.

Well, it all depends on where you want to be and what you want to do. Down by the sea, up in the mountains, out in the fields, by a river or lake. On the coast you might catch fish. In the woods you might chop wood. And every community has its own character and customs. Not to mention food and drink!



I can't wait to explore! What else can I look forward to?

The people! They bring the whole countryside experience to life. If you're fortunate, which of course you are, being a Lucky God, you'll make lifelong friends and end up visiting again and again!



I bet I'll find somewhere perfect! Where can I find get hold of some details, Ebisu-san?

In the pages of this guide, Daikoku-san! Let me show you around! There are so many places to stay, each with its own features and highlights. Sound good?

What are we waiting for? Let's go!



About this guide

☐ The information in this guide is accurate as of January 2025.

Please note that all details are subject to change. Please confirm details when you make a booking. We are not able to offer compensation for any financial loss or inconvenience arising from information in this guide. Thank you for your understanding.

"Nohaku" (Countryside Stay) is a trademark of the Ministry of Agriculture, Forestry and Fisheries.

<https://www.maff.go.jp/j/nousin/kouryu/nouhakusuishin/syouthyou.html>

This guide was prepared by Nokyo Tourist Corporation and made possible by a Ministry of Agriculture, Forestry and Fisheries Grant for Promotion and Vitalization of Rural Areas in FY2024.

Please address any comments about the content of this guide to: Nokyo Tourist Corporation Regional Collaboration Division.
Tel: (+81) 3-6436-8981

Visuals cooperation: Umi-Mori Art Museum

No reproduction of any content without written permission.

INDEX



SHIGA

滋賀 ▶ P.8

- ▶ 9 Maibara
- 10 Higashi Omi
- 11 //
- 12 Ritto

STAY

STAY

EXPERIENCE

EXPERIENCE



KYOTO

京都 ▶ P.13

- ▶ 14 Nantan
- 15 Wazuka
- 16 //
- 17 Kyoto
- 18 Ayabe
- 19 Kameoka
- 20 Kasagi

STAY

STAY

STAY

STAY EXPERIENCE

STAY

STAY

INFORMATION



OSAKA

大阪 ▶ P.21

- ▶ 22 Nose
- 23 //

STAY

STAY



HYOGO

兵庫 ▶ P.24

- ▶ 25 Himeji
- 26 Asago
- 27 Tamba-Sasayama
- 28 //
- 29 Awaji
- 29 Sumoto

STAY

STAY

STAY

STAY

EXPERIENCE

EXPERIENCE



NARA

奈良 ▶ P.30

- ▶ 31 Yamazoe
- 32 Asuka
- 33 Yoshino
- 34 Tenri
- 35 Tawaramoto
- 36 Soni
- 37 Uda
- 38 Gose
- 39 //
- 40 Totsukawa

STAY

STAY

STAY

STAY

STAY

STAY

STAY

STAY

STAY

STAY



WAKAYAMA

和歌山 ▶ P.41

- ▶ 42 Tanabe
- 43 Taiji
- 44 Kushimoto
- 45 Yura
- 46 Aridagawa
- 47 Nachikatsuura

STAY

STAY EXPERIENCE

STAY

EXPERIENCE

STAY

STAY

- INDEX ▶ P. 3
- MAP ▶ P. 4/5
- STYLE ▶ P. 6
- HOW TO ▶ P. 7
- INFORMATION ▶ P. 8~

- Globally Important Agricultural Heritage Systems &
Japanese Nationally Important Agricultural Heritage Systems ▶ P. 48
- TSUNAGU TANADA heritage ▶ P. 49
- World Heritage Irrigation Structures ▶ P. 49

HYOGO 兵庫



STAY

Himeji (Ieshima)	① Ieshima Hare Terrace	P.25
Asago	② EN	P.26
Tamba-Sasayama	③ NIPPONIA Fukusumi Post Town	P.27
	④ Auberge mocca	P.28



EXPERIENCE

Awaji	① Nature Guide & Retreat	P.29
Sumoto	② Meal-making experience at Kamado	P.29

OSAKA 大阪



STAY

Nose	① Small hotel TONARI	P.22
	② Farm Stay MICHIKUSA	P.22
	③ Natsukashisa no mori	P.23

WAKAYAMA 和歌山



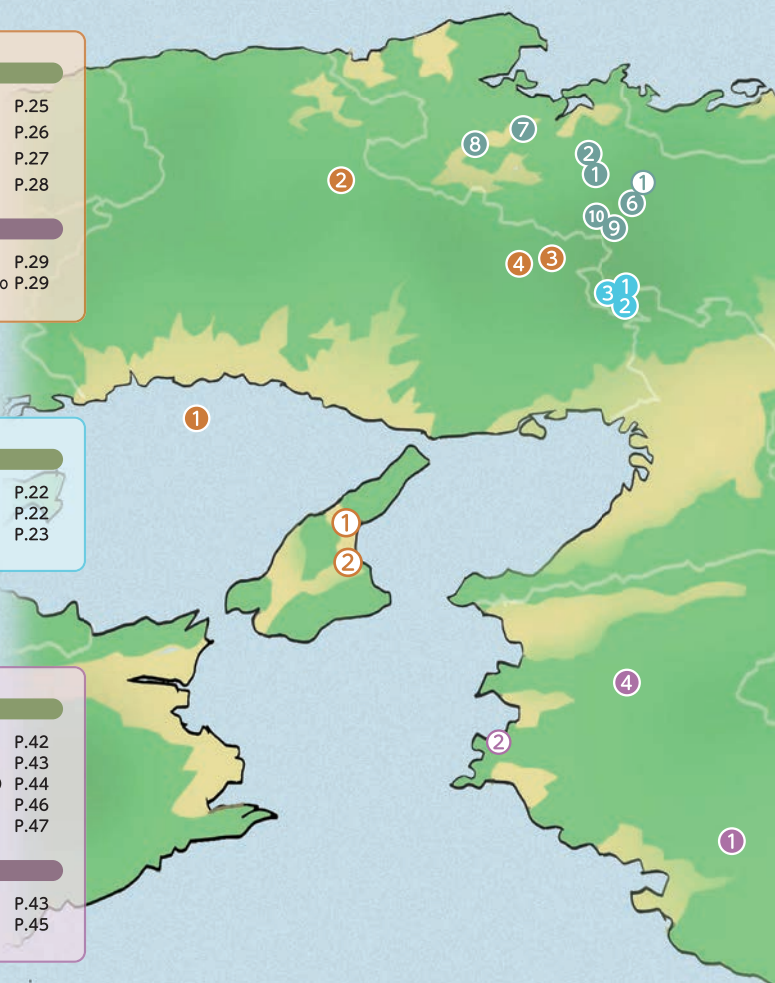
STAY

Tanabe	① Akizuno Garten	P.42
Taiji	② HAKUGEI	P.43
Kushimoto	③ NIPPONIA HOTEL KUSHIMOTO KUMANOKAIDO	P.44
Aridagawa	④ Kasamatsu-tei	P.46
Nachikatsuura	⑤ JUGEMU	P.47



EXPERIENCE

Taiji	① Taiji Field Kayak	P.43
Yura	② Shirasaki Cruises	P.45



Explore Deep Japan!

Nohaku is a Japanese word that refers to staying off the beaten track in regional Japan. Here you will encounter traditional customs and engage with the local culture and community. No two Nohaku experiences are the same! The Kinki region is packed with Nohaku options. This guide introduces places to stay in six prefectures. We hope you will identify experiences that match your interests. This is your gateway to deep Japan. Enjoy!

SHIGA 滋賀

STAY

- Maibara ① Private Traditional "Kominka" Residence Inn Soyomo P.9
Higashi Omi ② NIPPONIA GOKASHO OMI MERCHANT'S TOWN P.10

EXPERIENCE

- Higashi Omi ① River Activities P.11
② Trout Fishing P.11
③ Mt. Konze Hiking & Konsho-ji Temple Visit P.12
④ Harvest experience P.12
⑤ Studying EDO period & Cooking traditional foods P.12

KYOTO 京都

STAY

- Nantan ① Miyama FUTON&Breakfast P.14
② Ryokan KIGUSURIYA P.14
Wazuka ③ ATSUAN P.15
④ Blodge Lodge P.15
⑤ The Tea Farm Guest House Enu To Enu P.16
Kyoto ⑥ HOLE HOUSE AZAE P.17
Ayabe ⑦ Satoyama Guest House Couture P.18
⑧ Ichiju Issai no Yado Chabu Dining P.18
Kameoka ⑨ Hanare Ninoumi P.19
⑩ KOIYA P.19

EXPERIENCE

- Kyoto ① ATV Ride P.17

NARA 奈良

STAY

- Yamazoe ① ume, yamazoe P.31
Asuka ② ASUKANO OYADO KITORA P.32
③ BRANCHERA VILLA ASUKA P.32
Yoshino ④ Guest House Kisano Sesaragi P.33
Tenri・Nara ⑤ Yamato kogen Bosco Villa P.34
Tawaramoto ⑥ NIPPONIA TAWARAMOTO MARUTO SHOYU P.35
Soni ⑦ Soni Kodama Resort TAWA P.36
Uda ⑧ Uda Medicinal Bath Inn Yatakiya P.37
Gose ⑨ Japanese Old Folk Life Katsuemom P.38
⑩ Old Folk House Omoya-Morimoto P.38
⑪ Gose-no-yado Tayumu P.39
Totsukawa ⑫ Oomori no Sato P.40



SHIGA 滋賀 ▶ P.8

KYOTO 京都 ▶ P.13

OSAKA 大阪 ▶ P.21

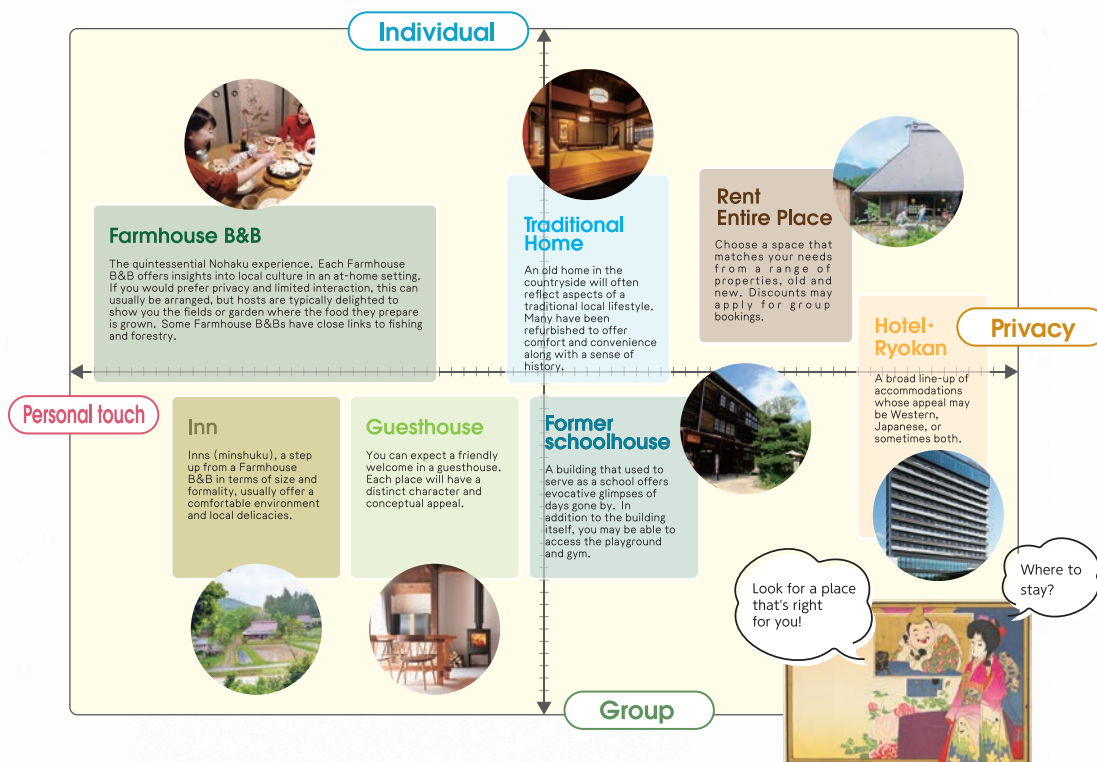
HYOGO 兵庫 ▶ P.24

NARA 奈良 ▶ P.30

WAKAYAMA 和歌山 ▶ P.41

✓ Nohaku facilities

Accommodation styles vary. Choose freely based on who you're traveling with and why.



STAY

- ♥ Extra hospitality
- 💻 Remote work
- ☕ Relaxing
- 🍷 Lots to do

SHIGA

滋賀

Maibara
Higashi Omi

Private Traditional "Kominka" Residence Inn Soyomo (Rent entire place)
NIPPONIA GOKASHO OMI MERCHANT'S TOWN (Rent entire place)

P.09
P.10



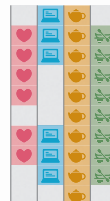
KYOTO

京都

Nantan
Wazuka

Miyama FUTON&Breakfast (Rent entire place)
Ryokan KIGUSURIYA (Rent entire place)
ATSUAN (Farmhouse B&B)
Blodge Lodge (Farmhouse B&B)
The Tea Farm Guest House Enu To Enu (Farmhouse B&B/Rent entire place)
HOLE HOUSE AZAE (Rent entire place)
Satoyama Guesthouse Couture (Farmhouse B&B/Guesthouse)
Ichiju Issai no Yado Chabu Dining (Farmhouse B&B)
Hanare Ninoumi (Rent entire place)
KOIYA (Rent entire place)

P.14
P.14
P.15
P.15
P.16
P.17
P.18
P.18
P.19
P.19



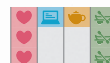
OSAKA

大阪

Nose

Small hotel TONARI (Rent entire place/Guesthouse)
Farm Stay MICHIKUSA (Farmhouse B&B)
Natsukashisa no mori (Farmhouse B&B/Rent entire place)

P.22
P.22
P.23



HYOGO

兵庫

Himeji (Ieshima)
Asago
Tamba-Sasayama

Ieshima Hare Terrace (Rent entire place)
EN (Hotel/Rent entire place)
NIPPONIA Fukusumi Post Town (Hotel)
Auberge mocca (Rent entire place)

P.25
P.26
P.27
P.28



NARA

奈良

Yamazoe
Asuka

ume, yamazoe (Rent entire place)
ASUKANO OYADO KITORA (Inn)
BRANCHERA VILLA ASUKA (Hotel)
Guest House Kisano Seseragi (Rent entire place)
Yamato kogen Bosco Villa (Ryokan)
NIPPONIA TAWARAMOTO MARUTO SHOYU (Ryokan)
Soni Kodama Resort TAWA (Rent entire place)
Uda Medicinal Bath Inn Yatakiya (Hotel)
Japanese Old Folk Life Katsueemon (Rent entire place)
Old Folk House Omoya-Morimoto (Farmhouse B&B)
Gose-no-Yado Tayumu (Farmhouse/Rent entire place)
Oomori no Sato (Rent entire place/Guesthouse)

P.31
P.32
P.32
P.33
P.34
P.35
P.36
P.37
P.38
P.38
P.39
P.40



WAKAYAMA

和歌山

Tanabe
Taiji
Kushimoto
Aridagawa
Nachikatsuura

Akizuno Garten (Former schoolhouse)
HAKUGEI (Hotel)
NIPPONIA HOTEL KUSHIMOTO KUMANOKAIDO (Rent entire place)
Kasamatsu-tei (Rent entire place)
JUGEMU (Farmhouse B&B)

P.42
P.43
P.44
P.46
P.47



Guide to this Guide

Facility information

1

Ryokan Kigusuriya

During the Edo period, this traditional home was the village headman's residence. Turning past the building is the ancient "Mackerel Road," a route dating back to the Edo period.

2

Bed type
Futon on floor

Meal request
☒ Vegetarian ☐ Vegan
☒ Halal ☐ Gluten-free
English Menu available

Payment(E-money)
☒ Apple ☐ Google
☒ Alipay ☐ WeChat

3

1 Keeping the vegetation in check
2 Plenty of rooms for all
3 A feast at the heart of the home

4

Facility Information

Address: 6-1 Taniguchi, Maibetsu, Ishikawa 920-0042, Japan
 Tel: 011-84-7421
 Fax: 011-84-7421
 E-mail: info@kigusuriya.com
 Website: <http://www.kigusuriya.com/>

Capacity: 10 rooms, 10,000 yen per room, Max. 10 persons

Car: 60 min. from Gorku Interchange, Train: 40 min. to Gorku Station (JR)
 10 spaces, shuttle service with Miyama, Max. 10 persons
 Breakfast and dinner can be reserved separately

Room: 10 min. from Gorku Interchange, 10 min. from Gorku Station (JR)
 10 spaces, shuttle service with Miyama, Max. 10 persons
 Breakfast and dinner can be reserved separately

Other: 10 min. from Gorku Interchange, 10 min. from Gorku Station (JR)
 10 spaces, shuttle service with Miyama, Max. 10 persons
 Breakfast and dinner can be reserved separately



Homestay space
You will stay in part of the building that serves as your host's home.

Local experiences

An immersive cruising experience.

Yura
Oobiki Fishing Port Shirasaki Cruises

A cruise along the Shirasaki coast, with its white limestone cliffs. The boats are captained by local fishermen with a detailed knowledge of the area. This enables them to approach the rocks safely to give you a better view.

Reservation information

For: Oobiki Fishing Port, Yura-cho, Hokkaido, Wakayama 540-1123

Year-round
 Max. 12 persons per boat
 Max. 72 persons on 6 boats
 30 min. and 60 min. cruises available
 Refer to the website
 Car: 20 min. from Nishino Interchange and Kawabe Interchange
 Car: 10 min. to San Juan 100-100
<https://kikusuriya.com/jp/cruise/>
 Cash only

A word of welcome from the local support organization

A word of welcome

We are a consortium of accommodations, shops, and other local enterprises collaborating to offer guests a varied yet unified hotel experience in the Miyama area. We are proud to welcome you to this beautiful region, characterized by its untouched nature, rich history, and welcoming community.

5

① Ways to stay



Extra hospitality

Immerse yourself in the local lifestyle and make new friends.



Remote work

In Japan, the word "workcation" is used when you want to enjoy a change of pace but intend to get some work done, too.



Relaxing

Deep detox. Get away from it all. Leave the hustle and bustle behind. Take a deep breath and relax.



Lots to do

A destination may offer many ways to spend a fun-filled day. No need to be an expert!

Find what you're looking for!



② Features



Check out the spider chart to see what each stay offers!

- ☐ Food&Drink
- ☐ Activities
- ☐ Personal touch
- ☐ Facility
- ☐ Scenery



③ Stay styles

Bed type
Futon on floor

Meal request

- ☒ Vegetarian ☐ Vegan
- ☐ Halal ☒ Gluten-free
- No English Menu.**

Payment(E-money)

- ☒ Apple ☐ Google
- ☒ Alipay ☐ WeChat

Going solo?
With family?
With friends?



④ Notes

○ Fees

You will pay either per person or per rental space. The fee shown is the minimum (tax included). A fee for accommodation or experience includes consumption tax and service charge as of January 2025. Fees may vary depending on season, day of the week, number of guests, etc. Please check with each facility.

○ Meals

Each facility has different arrangements. Some provide dinner and/or breakfast as part of the fee. In other cases, you will need to reserve meals in advance for a separate payment. Also, a facility may offer catering or stipulate self-catering. Please be sure to check at the time of booking.

○ Amenities

Amenities vary greatly. Please confirm in advance and be ready to take anything that is not provided. The items you need may include sleepwear, towels, or toothbrushes.

○ Experiences

Some experiences may be available only at specific times of year, or for specific numbers of people. You may need to reserve in advance.

Important!



⑤ A word of welcome

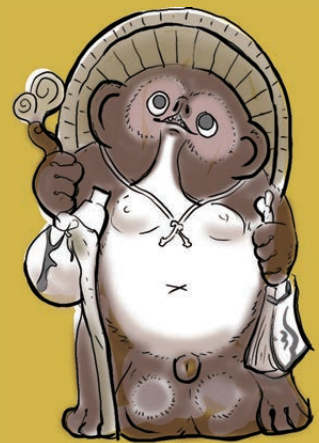
Each local support organization plays a key role in the Nohaku experience.

SHIGA

滋賀

On the shores of Lake Biwa

Lake Biwa, Japan's largest lake, is situated entirely within the borders of Shiga Prefecture. Here you can stay in countryside homes that have been shaped by nature and local culture. For many Japanese, this area brings to mind the Omi merchants of centuries past. Their focus on the company, the customer, and the community resonates with the values of modern business.



STAY

Maibara

- ① Private Traditional "Kominka" Residence Inn Soyomo P.9

Higashi Omi

- ② NIPPONIA GOKASHO OMI MERCHANT'S TOWN P.10

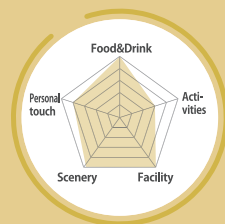
EXPERIENCE

Higashi Omi

- ① River Activities P.11
- ② Trout Fishing P.11

Ritto

- ③ Mt. Konze Hiking & Konsho-ji Temple Visit P.12
- ④ Harvest experience
- ⑤ Studying EDO period & Cooking traditional foods



Bed type
 Futon on floor/Twin bed

Meal request
☒ Vegetarian ☒ Vegan
☐ Halal ☒ Gluten-free
English Menu Available.

Payment(E-money)
☐ Apple ☐ Google
☒ Alipay ☒ WeChat

MAP
 Web

Maibara
Shiga Prefecture



Private Traditional “Kominka” Residence Inn Soyomo

A home with traditional woodwork

One feature of this renovated traditional home is its traditional warmth and woodwork. Maibara, a secluded area in the mountains, is relatively cool in the summer yet mild in the winter. On clear evenings, the starry sky is a highlight.



Make Japanese sweets with local grandmothers



- Stay in a traditional home.
- A view out to the mountains.
- Spacious dining room.

DATA

457 Kozuhara, Maibara City, Shiga 521-0301

IN 15 : 00 OUT 10 : 00

Facility	Rent entire place
Rate	1 night, no meals: from 40,000 yen for entire house. Max. 8 persons.
Access	Car: 40 min. from Maibara interchange. Train: 35 min. by car from Maibara Sta.
Parking	5 spaces. No shuttle service (can be arranged for a fee).
Meals	Breakfast and dinner can be reserved (additional fee).
Web	https://soyomo.net

In the room	Wi-Fi	Kitchen	Bath
	Shower	Air-conditioning	TV
	Fridge	Microwave	Washing machine
	Hair dryer		
Other	Hand towel	Bath towel	Toothbrush
	Soap/shower gel	Shampoo/conditioner	Yukata (loungewear)
	Laundry detergent	Cutlery and plates	Seasonings
	Digital (some forms)	Credit card	Cash

A word of welcome

Maibara is known as the birthplace of Ibuki zairai soba, a type of Japanese noodles. You can also enjoy a barbeque of Omi beef and Hida beef, or a winter chicken hot pot. Communities in the snowy mountains of Higashi Kusano offer glimpses of life in times gone by.

Local support association: Biwakonomoto Kominka Historic Homelife Society



Higashi Omi

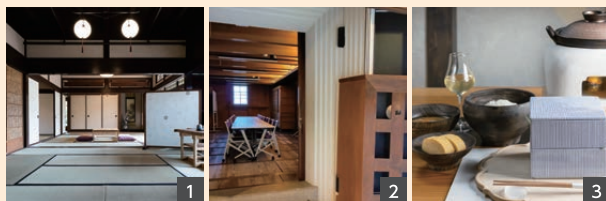
Shiga Prefecture



NIPPONIA GOKASHO OMI MERCHANT'S TOWN

Stay in an old merchant's town,
surrounded by waterways

Rent out the former residence of a wealthy merchant for a group vacation or company retreat. The building offers spaces for training, including a theater and large tatami rooms. Breakfast features Omi rice cooked in an earthenware pot: a traditional merchant's meal of centuries past. You can sign up for a guided tour of the surrounding merchants' neighborhood.



- 1 Tatami rooms in the mansion.
- 2 The storehouse has been transformed into a theater.
- 3 Breakfast is provided by local restaurants.



Bed type

Futon on floor/Fourth bed

Meal request

- ☐ Vegetarian ☐ Vegan
☐ Halal ☐ Gluten-free

No English Menu.

Payment(E-money)

- ☐ Apple ☐ Google
☐ Alipay ☐ WeChat



MAP



Web



A soothing green setting

DATA

645 Gokashokondo-cho, Higashiomi City, Shiga 529-1405

IN 15:00 OUT 11:00

- Facility** Rent entire place
- Rate** 1 night, breakfast: from 71,500 yen for the entire house. (60,500 yen + 11,000 yen per person.) Max. 10 persons.
- Access** Car: 20 min. from Yokaichi interchange.
Train: 15 min. by bus from Notogawa Sta.
- Parking** 2 spaces. No shuttle service.
- Meals** Breakfast included.
- Web** <https://en.nipponia-gokasho.jp>

In the room	Wi-Fi	Kitchen	Bath
	Shower	Air-conditioning	TV
	Fridge	Microwave	Washing machine
Other	Hair dryer		
	Hand towel	Bath towel	Toothbrush
	Soap/shower gel	Shampoo/conditioner	Yukata (loungewear)
	Laundry detergent	Cutlery and plates	Seasonings
Payment	Digital (some forms)	Credit card	Cash





Higashi Omi

RIVERSIDE GLAMPING Nuts

River Activities

Kanzaki River Shower Climbing and Canyoning

Sign up for guided activities, rent a comfortably furnished tent for the night, and make the most of the river!

You can also do barbecues and rent tents (glamping) to stay the night or just relax by the riverside in the morning.



Canyoning adventures in mountain streams.



MAP



Web

Reservations required (by day before)

88 Yuzurio-cho, Higashiomi City, Shiga 527-0206

Available	June through October.
Capacity	1 to 15 persons.
Duration	4 hours.
Rate	Adult: 8,500 yen each.
Access	Car: 30 min. from Yokaichi interchange.
Web	https://nuts-camp.com/
Payment	Cash only.



Higashi Omi

EIGENJI GREENLAND

Trout Fishing

Enjoy authentic mountain stream fishing in the great outdoors, easily enjoyed by beginners and experienced anglers alike.



MAP



Web

No reservation required

67 Kouzuhata-cho, Higashiomi City, Shiga 527-0214

Available	Year-round.
Capacity	From 1 person.
Duration	2 to 3 hours.
Rate	Adult: 4,500 yen each. Child: 3,400 yen each.
Access	Car: 30 min. from Yokaichi interchange.
Web	https://eigenjigreenland.com/
Payment	Cash only.



A word of welcome

Highlights of the Kanzaki River experience include crystal clear water and riverbank rocks. You dive under waterfalls and slide down the natural formations. Please drop by the roadside station for local products.

Local support organization: Okueigenji Regional Historical Resources-based Urban Development Promotion Council

Ritto

Mt. Konze

Mt. Konze Hiking
& Konsho-ji Temple Visit

Trekking with a spectacular view of Mt. Konze & visit the fantastic and mysterious Konsho-ji Temple with its beautiful moss deep in the mountains.



Web



Advance reservation required (up to 7 days in advance)

348 Kanonji, Ritto City, Shiga 520-3002

Available	Around March to November
Capacity	4 to 15 people
Duration	2 hours 30 min.
Rate	8,000 yen per person (2 guides)
Access	Car: 12km from Ritto IC (about 30 min.) Train: 40 min. by car from JR Kusatsu Sta, 30 min. by car from Tehara Sta.
Web	https://www.tateba-ritto.com/okukonze/



Hashiri Farm

Harvest experience

blueberry picking,
sweet potato digging

Visitors can experience harvesting crops grown using fresh water flowing from Mt. Konze. Lake Biwa can also be viewed from the naturally rich terraced rice paddies.



MAP



Web



- 1 Smoothies made with fresh blueberries from here.
- 2 We have 30 varieties, mainly large grain varieties.
- 3 Sweet potatoes from the land of abundant nature

Advance reservation required (up to 7 days in advance)

518 Arahari, Ritto City, Shiga 520-3003

Available	Blueberry picking: Mid-June to mid-August / Sweet potato digging: September to November
Capacity	1 to 10 people
Duration	1 hour
Rate	Adults 3,500 yen, children 1,500 yen *Includes a souvenir and a drink (smoothie) at the cafe
Access	Car: 8 km from Ritto IC (about 15 min.) Train: 20 min. by car from JR Kusatsu Sta, 15 min. by car from Tehara Sta.
Web	https://hashirifarm.com/



Hokkori-an

Learning about Edo Period highway culture
and Making traditional dishes "Megawa Dengaku
(Tofu) and Nameshi (rice boiled with greens)"

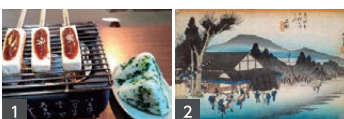
A talk about "Nameshi/Dengaku", a traditional dish said to have been eaten by travelers on the Tokaido Highway in the Edo period when they stopped at "Tateba (service area)", and an experience of actually making and tasting the dish.



MAP



Web



- 1 Slowly roasted dengaku on a charcoal grill and topped with seasonal miso.
- 2 Fifty-three Stations of the Tokaido, painted by Hiroshige Utagawa

Advance reservation required (up to 7 days in advance)

347-2 Oka, Ritto City, Shiga 520-3014

Available	All year round
Capacity	4 to 12 people
Duration	1 hour and 30 minutes
Rate	5,500 yen per person (includes miso soup and dengaku miso as souvenirs)
Access	Car: 4km from Ritto IC (about 10 min.) Bus: From JR Kusatsu Sta, get off at Oka bus stop.
Web	https://kurasumu-shiga.org/hokkori-an/

Okukonze Farm Stay Promotion Council

Located in the southern part of Ritto City, Shiga Prefecture, in the mid-mountainous area. The area offers a beautiful view of Lake Biwa and vast forest space. While experiencing local history and culture in the midst of nature, you can spend a meaningful time in the midst of nature, experiencing the history and culture of the region.



KYOTO

京都

A journey through time

The identity of many locations in Kyoto Prefecture has been shaped by their association with the cultural powerhouse at the region's heart, the ancient capital of Kyoto. Get out into the countryside, and local history will come to life for you in the mountains, by the ocean, and along Kyoto's highways and byways.



STAY

Nantan

- ① Miyama FUTON&Breakfast P.14
- ② Ryokan KIGUSURIYA P.14

Wazuka

- ③ ATSUAN P.15
- ④ Blodge Lodge P.15
- ⑤ The Tea Farm Guest House Enu To Enu P.16

Kyoto

- ⑥ HOLE HOUSE AZAE P.17

Ayabe

- ⑦ Satoyama Guest House Couture P.18
- ⑧ Ichiju Issai no Yado Chabu Dining P.18

Kameoka

- ⑨ Hanare Ninoumi P.19
- ⑩ KOIYA P.19

EXPERIENCE

Kyoto

- ① ATV Ride P.17

INFORMATION

Kasagi

- ① Area Introduction: Kasagi P.20

Extra hospitality

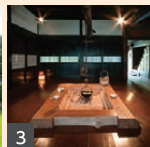
Remote work

Relaxing

Lots to do



- 1 The attic under a thatched roof.
- 2 Surrounded by nature.
- 3 A sunken hearth.



Nantan

Miyama FUTON & Breakfast

Select from four renovated traditional homes. Pick your favorite and rent it out for your group. You can sign up for a hot pot plan or local experiences such as a thatched roof activity.



Bed type
Futon on floor

Meal request

- ☒ Vegetarian ☐ Vegan
☐ Halal ☒ Gluten-free
No English Menu.

Payment(E-money)

- ☒ Apple ☐ Google
☒ Alipay ☐ WeChat



MAP

Web

DATA

52 Kitsuineiwa, Shima, Miyama-cho, Nantan City, Kyoto 601-0751

IN 15:00~19:00 OUT 10:00

Facility Rent entire place

Rate 1 night, breakfast: 21,000 yen per person. Max. 8 persons.

Access

Car: 35 min. from Sonobe interchange.
Train: 40 min. by bus from Sonobe Sta.

Parking

6 spaces. Shuttle service from Sonobe Sta.
Max. 16 persons.

Meals

Breakfast included. Dinner can be reserved (additional fee). Meals available in the local area.

Web

<https://miyamafandb.jp>

	Wi-Fi	Kitchen	Bath
In the room	Shower	Air-conditioning	TV
	Fridge	Microwave	Washing machine
	Hair dryer		
Other	Hand towel	Bath towel	Toothbrush
	Soap/shower gel	Shampoo/conditioner	Yukata (loungewear)
Payment	Laundry detergent	Cutlery and plates	Seasonings
	Digital (some forms)	Credit card	Cash

Extra hospitality

Remote work

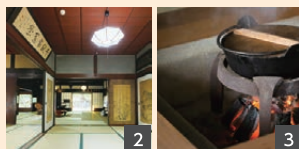
Relaxing

Lots to do

Nantan

Ryokan Kigusuriya

During the Edo period, this traditional home was the village headman's residence. Running past the building is the ancient "Mackerel Road," a route dating back to the Heian period.



- 1 Keeping the vegetation in check.
- 2 Plenty of room for all.
- 3 A hearth at the heart of the home.



Bed type
Futon on floor

Meal request

- ☒ Vegetarian ☐ Vegan
☐ Halal ☐ Gluten-free
English Menu Available.

Payment(E-money)

- ☐ Apple ☐ Google
☒ Alipay ☐ WeChat



MAP

Web

DATA



8-1 Imayasu, Tsurugaoka, Miyama-cho, Nantan City, Kyoto 601-0762

IN 15:00 OUT 10:00

Facility Rent entire place

Rate 1 night, no meals: 10,000 yen per person. Max. 10 persons.

Access

Car: 40 min. from Sonobe interchange.
Train: 40 min. by bus from Hiyoshi Sta.

Parking

10 spaces. Shuttle service within Miyama.
Max. 20 persons.

Meals

Breakfast and dinner can be reserved (additional fee).

Web

<http://www.kigusuriya.com/en/>

	Wi-Fi	Kitchen	Bath
In the room	Shower	Air-conditioning	TV
	Fridge	Microwave	Washing machine
	Hair dryer		
Other	Hand towel	Bath towel	Toothbrush
	Soap/shower gel	Shampoo/conditioner	Yukata (loungewear)
Payment	Laundry detergent	Cutlery and plates	Seasonings
	Digital (some forms)	Credit card	Cash

A word of welcome

The town of Miyama is known for its thatched roofs, unspoiled nature, rich history, and sense of community. Bringing together accommodations, shops, and other local businesses, our aim is to offer visitors a memorable experience. We hope to see you soon!

Local support organization: Dispersed Hotel Association of Miyama



Extra hospitality

Remote work

Relaxing

Lots to do



Wazuka

ATSUAN

A traditional home set amid tea fields in Wazuka, a town that is the main source of renowned Uji tea. Local tea is a feature of the meals prepared by the owners using local ingredients.

- 1 A typical meal.
- 2 Tea farmers at work.
- 3 You can make pottery.



Bed type

Futon on floor/Twin bed

Meal request

- ☒ Vegetarian ☐ Vegan
☐ Halal ☐ Gluten-free
No English Menu.

Payment(E-money)

- ☒ Apple ☒ Google
☒ Alipay ☒ WeChat



MAP



Web

DATA



20 Nakatani, Shirasu, Wazuka-cho, Soraku-gun, Kyoto 619-1222
Guest rooms are in the main house.

IN 15:00 OUT Prior notice

Facility Farmhouse B&B

Rate 1 night, 2 meals: from 16,500 yen.

Access Car: 40 min. from Joyo/Horai/Shigaraki interchange.
 Train: 20 min. by car from Kamo Sta.
Parking 5 spaces. Shuttle service from Kamo Sta.
 Max. 6 persons.
Meals Breakfast and dinner included.
Web <https://atsuan-wazuka.com/en/>

In the room	Wi-Fi Shower Fridge Hair dryer	Kitchen Air-conditioning Microwave	Bath TV Washing machine
Other	Hand towel Soap/shower gel Laundry detergent	Bath towel Shampoo/conditioner Cutlery and plates	Toothbrush Yukata (loungewear) Seasonings
Payment	Digital (some forms)	Credit card	Cash

Extra hospitality

Remote work

Relaxing

Lots to do

Wazuka

Blodge Lodge

A homestay in the tea fields. Chat in English, share travel stories, stroke the cats. Experience matcha art or a formal serving of tea.



- 1 A cooking experience in English.
- 2 Local ingredients.
- 3 A tea-green setting.



Bed type

Futon on floor

Meal request

- ☒ Vegetarian ☒ Vegan
☒ Halal ☒ Gluten-free
English Menu Available.

Payment(E-money)

- ☐ Apple ☐ Google
☐ Alipay ☐ WeChat



MAP



Web

DATA



37 Kokyo, Naka, Wazuka-cho, Soraku-gun, Kyoto 619-1205
Guest rooms are in the main house.

IN 16:00 OUT 10:00

Facility Farmhouse B&B

Rate 1 night, breakfast: from 8,800 yen.

Access Car: 40 min. from Joyo/Horai/Shigaraki interchange.
 Train: 20 min. by car from Kamo Sta.
Parking 2 spaces. Shuttle service from Wazuka Junior High School Bus Stop. Max. 6 persons.
Meals Breakfast included. Dinner can be reserved (additional fee).
Web <https://blodelodge.com/>

In the room	Wi-Fi Shower Fridge Hair dryer	Kitchen Air-conditioning Microwave	Bath TV Washing machine
Other	Hand towel Soap/shower gel Laundry detergent	Bath towel Shampoo/conditioner Cutlery and plates	Toothbrush Yukata (loungewear) Seasonings
Payment	Digital (some forms)	Credit card	Cash

Extra hospitality

Remote work

Relaxing

Lots to do



Bed type
Futon on floor

Meal request

✓ Vegetarian ✓ Vegan
□ Halal ✓ Gluten-free

No English Menu.

Payment(E-money)

□ Apple □ Google
□ Alipay □ WeChat



MAP



Web

Wazuka

Kyoto Prefecture



The Tea Farm Guest House Enu To Enu

Built by the owner's grandfather

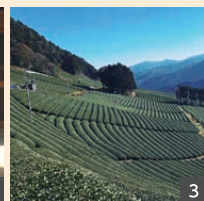
The Kita family have been tea farmers in Wazuka for generations, and this 60-year-old home was built by the owner's grandfather. Food highlights include original dishes such as tempura made with tea leaves. Over 20 varieties of tea grow in the garden. Sign up for tea-picking, tea-field tours, and cooking. When no one is staying, the owner offers tea-based meals to travelers passing through.



1 Tea-based meals.



2 The owners.



3 Wazuka's renowned tea fields.



The family's tea utensils

DATA

30 Sugatani, Naka, Wazuka-cho, Soraku-gun, Kyoto 619-1205

enutoenu@gmail.com IN 16:00 OUT 10:00

Facility Farmhouse B&B · Rent entire place

Rate 1 night, 2 meals: from 15,500 yen.

Access Car: 35 min. from Kizu interchange.
Train: 15 min. by bus from Kamo Sta.

Parking 2 spaces. Shuttle service from Junior High School Bus Stop. Max. 3 persons.

Meals Breakfast and dinner included.

Web <https://enutoenu.studio.site/>



In the room	Wi-Fi	Kitchen	Bath
	Shower	Air-conditioning	TV
	Fridge	Microwave	Washing machine
	Hair dryer		
Other	Hand towel	Bath towel	Toothbrush
	Soap/shower gel	Shampoo/conditioner	Yukata (loungewear)
	Laundry detergent	Cutlery and plates	Seasonings
Payment	Digital (some forms)	Credit card	Cash

A word of welcome

For more information about the facility and Wazuka itself, please scan the codes.

Local support organization: Kyoto Tea Country Agricultural Stay Promotion Council



Wazuka, Kyoto: The Tea Farm Guest House Enu To Enu
#京都 #KYOTO



A Trip Through Kyoto Tea Country:
Wazuka, Part 1

Extra hospitality

Remote work

Relaxing

Lots to do



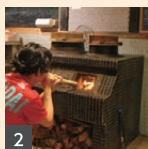
Kyoto

HOLE HOUSE
AZAE

Visitors can experience cooking rice in a kamado, dining by a sunken hearth, bathing in a goemon bath, and harvesting vegetables from the fields from June to October.

How about stocking up on local produce at Woody Keihoku Roadside Station, a nearby supermarket, Tokiwa, a restaurant specializing in Japanese black beef, or "Hatsuhinode", a local sake brewery in Keihoku? The house has 2 bedrooms, a Japanese-style room (12 tatami mats), a living room, and a kitchen with a sunken hearth. Bathrooms and toilets are in a separate building about 5 meters from the kitchen door.

- 1 Grilling and cooking in the sunken hearth.
- 2 Cooking rice in a kamado.
- 3 Relax with your family in the 2 Goemon Baths.



Bed type
Futon on floor/Single bed

Meal request

- ☐ Vegetarian ☐ Vegan
☐ Halal ☐ Gluten-free

No English Menu.

Payment(E-money)

- ☐ Apple ☐ Google
☐ Alipay ☐ WeChat



MAP



Web

DATA

62 Kawanishi, Keihokuazae-cho,
Ukyo-ku, Kyoto City, Kyoto 601-0274

IN 15:00~18:00 OUT 11:00

Facility Rental of a single house

Charge 10,320 yen/person/night with no meal (max. 5 people)

*Negotiable for more than 6 people

Access

Car: 90 minutes from Kyoto Station
Bus: From JR Kyoto Station, get off at
Shuzan bus stop.

(Pick-up service to the bus stop is available)

Parking

Available (3 cars)

Meals

Not provided, self-catering.

Web

<https://www.banja-kyoto.com/>

In the room	Wi-Fi	Kitchen	Bath
	Shower	Air-conditioning	TV
	Fridge	Microwave	Washing machine
Other	Hair dryer		
	Hand towel	Bath towel	Toothbrush
	Soap/shower gel	Shampoo/conditioner	Yukata (loungewear)
Payment	Laundry detergent	Cutlery and plates	Seasonings
	Digital (some forms)	Credit card	Cash

Kyoto



KYOTO KEIHOKU Quad Tour

ATV Ride

Drive a buggy along country roads, led by a tour guide.
No license required. Child-friendly courses available.



MAP



Web

Reservations required (by 2 days before)

10 Katsuyama, Keihokushimoyuge-cho, Ukyo-ku,
Kyoto City, Kyoto 601-0534

Available All year.

Capacity 1 to 5 persons.

Duration From 20 min.

Rate From 2,200 yen each

Access Car: 60 min. from Kyoto Sta.

Bus: 15 min. by Nantan Community Bus from Shuzan Bus Stop.

Web <https://keihoku-quad-tour.kyoto/>

Payment E-money / Credit cards / Cash.



1 Driving through the mountains.



2 A mountaintop swing.



3 You can experience pounding rice cakes using a pestle and mortar and making natto mochi (fermented soybean paste), a local specialty.

Extra hospitality

Remote work

Relaxing

Lots to do



- 1 Owners and guests together.
- 2 Fun for children.
- 3 The local scenery.



Ayabe

Satoyama Guest House Couture

A refurbished traditional home in the mountains. Get involved in preparing meals with local ingredients. In a nearby stream you can look for fish, crabs, and fireflies. Sign up for activities such as pounding mochi, making Japanese paper, and hiking with a guide.



Bed type

Futon on floor/Single bed

Meal request

- ☒ Vegetarian ☒ Vegan
☒ Halal ☒ Gluten-free
[English Menu Available.](#)

Payment(E-money)

- ☐ Apple ☐ Google
☒ Alipay ☐ WeChat



MAP

Web

DATA



16 Shimonodan, Iizumi-cho, Ayabe City, Kyoto 623-1124

Guest rooms are in the main house.

IN 15:00 OUT 10:00

Facility Farmhouse B&B · Guesthouse

Rate 1 night, no meals: from 3,000 yen.

Access

Car: 30 min. from Kyotambawachi interchange.
 Train: 30 min. by car from Ayabe Sta.

Parking

5 spaces. Shuttle service from Omachi Bus Terminal. Max. 3 persons.

Meals

Self-catering

Web

<https://guesthouse-couture.com/en>

	Wi-Fi	Kitchen	Bath
In the room	Shower	Air-conditioning	TV
	Fridge	Microwave	Washing machine
	Hair dryer		
Other	Hand towel	Bath towel	Toothbrush
	Soap/shower gel	Shampoo/conditioner	Yukata (loungewear)
	Laundry detergent	Cutlery and plates	Seasonings
Payment	Digital (some forms)	Credit card	Cash

Extra hospitality

Remote work

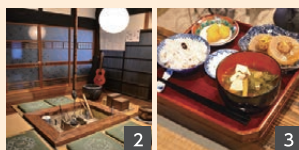
Relaxing

Lots to do

Ayabe

Ichiju Issai no Yado Chabu Dining

English is spoken at this self-sufficient farm. Your hosts prepare rice in a clay pot, grow their own miso, and shop locally. Their philosophy of the good life is "ichiju issai": one soup, one dish.



- 1 Take part in farming experiences.
- 2 The sunken hearth.
- 3 Join the owners in preparing and eating meals.



Bed type

Futon on floor

Meal request

- ☒ Vegetarian ☒ Vegan
☒ Halal ☒ Gluten-free
[English Menu Available](#)

Payment(E-money)

- ☐ Apple ☐ Google
☐ Alipay ☐ WeChat



MAP

Web

DATA



4 Jodoji, Nishizaka-cho, Ayabe City, Kyoto 623-0364

Guest rooms are in the main house.

IN 15:00~18:00 OUT 9:00~10:00

Facility Farmhouse B&B

Rate 1 night, 2 meals: from 22,000 yen.

Access

Car: 15 min. from Ayabe interchange.
 Train: 20 min. by car from Ayabe Sta.

Parking

3 spaces. Shuttle service from Ayabe Sta. or Oe Sta. Max. 3 persons.

Meals

Breakfast and dinner included.

Web

https://chabudining.com/?page_id=1241

	Wi-Fi	Kitchen	Bath
In the room	Shower	Air-conditioning	TV
	Fridge	Microwave	Washing machine
	Hair dryer		
Other	Hand towel	Bath towel	Toothbrush
	Soap/shower gel	Shampoo/conditioner	Yukata (loungewear)
	Laundry detergent	Cutlery and plates	Seasonings
Payment	Digital (some forms)	Credit card	Cash

A word of welcome

In Ayabe, you can experience farm stays or rent out an entire traditional home. Accommodations include Local Life Ichishi, surrounded by trees, and Local Life Wakamatsu Ryokan, a refurbished traditional home in the town center.

Great for families and groups. Please refer to the websites Visit Ayabe and Local Life Ayabe.

Local support association: Ayabe Farm Stay Promotion Council



Visit Ayabe



Local Life Ayabe

Extra hospitality

Remote work

Relaxing

Lots to do



Kameoka

Hanare Ninoumi

This refurbished 100-year-old home in Kameoka includes 3 buildings, plus modern amenities. Meals can be delivered from nearby restaurants if you reserve a week in advance. You can sign up for a guided tour of the historic town of Kameoka.



Bed type

Futon on floor/Single bed

Meal request

- ☐ Vegetarian ☐ Vegan
☐ Halal ☐ Gluten-free

No English Menu.

Payment(E-money)

- ☐ Apple ☐ Google
☐ Alipay ☐ WeChat

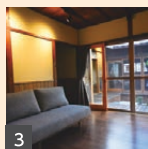


MAP



Web

- 1 The exterior.
- 2 The rooms overlook the beautiful garden.
- 3 Inside the two-story main house.



DATA

15 Nishitsutsu-cho, Kameoka City,
Kyoto 621-0817

IN 15:00~18:00 OUT 10:00

Facility Rent entire place
 1 night, no meals: from 7,700 yen
 per person. Max. 5 persons.
 Prices subject to revision.

Access Car: 5 min. from Kameoka interchange.
 Train: 15 min. on foot from Kameoka Sta.
 Parking 1 space per building. No shuttle service.
 Meals Breakfast and dinner can be reserved (additional fee).
 Meals available in the local area.
 Web <https://www.hanare-ninoumi.jp/home-english>

In the room	Wi-Fi	Kitchen	Bath
	Shower	Air-conditioning	TV
	Fridge	Microwave	Washing machine
Other	Hair dryer		
	Hand towel	Bath towel	Toothbrush
	Soap/shower gel	Shampoo/conditioner	Yukata (loungewear)
Payment	Laundry detergent	Cutlery and plates	Seasonings
	Digital (some forms)	Credit card	Cash

Extra hospitality

Remote work

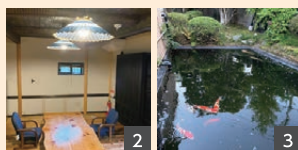
Relaxing

Lots to do

Kameoka

KOIYA

A renovated farmhouse in Kameoka. Generations ago, people bred koi (carp) in the local rivers and waterways. The guesthouse name Koiya reflects that legacy, and koi breeding has been revived in the area. You can rent out the whole building, which includes a former storehouse and annex.



- 1 A rustic setting.
- 2 Plaster walls.
- 3 A koi pond.



Bed type

Futon on floor

Meal request

- ☐ Vegetarian ☐ Vegan
☐ Halal ☐ Gluten-free

No English Menu.

Payment(E-money)

- ☐ Apple ☐ Google
☐ Alipay ☐ WeChat



MAP



Web

DATA



2 Miyanomae, Kitanosho, Chiyokawa-cho,
Kameoka City, Kyoto 621-0046
 Guest rooms are in the annex

IN 15:00 OUT 10:00

Facility Rent entire place
 1 night, no meals: from 6,500 yen
 per person. Max. 6 persons.

Access Car: 1 min. from Chiyokawa interchange.
 Train: Get off at Kitanosho Bus Stop.
 Parking 2 spaces. Shuttle service within Kameoka.
 Meals Breakfast and dinner can be reserved (additional fee).
 Meals available in the local area.
 Web <https://www.harvestjourney.com/spot/222>

In the room	Wi-Fi	Kitchen	Bath
	Shower	Air-conditioning	TV
	Fridge	Microwave	Washing machine
Other	Hair dryer		
	Hand towel	Bath towel	Toothbrush
	Soap/shower gel	Shampoo/conditioner	Yukata (loungewear)
Payment	Laundry detergent	Cutlery and plates	Seasonings
	Digital (some forms)	Credit card	Cash



A word of welcome

Come stay in Kameoka and connect with the locals. You can explore the region's culture and craftsmanship, eat fresh food, and travel through serene valleys. Please visit our website for more information.

Local support association: Harvest Journey Kameoka



Kasagi



Area Introduction

At the southern end of Kyoto Prefecture, near the border with Nara Prefecture, is Kasagi, the second least-populated town in Japan. A local landmark is Kasagidera, a temple at the foot of Mt. Kasagi, which has Japan's largest cliff and rock Buddhist images. Archaeological excavations have unearthed evidence that people have been living here for millennia.

The town's charm changes with the seasons. Several popular tourist and outdoor-activity areas are easily accessible by train, making Kasagi a popular destination for hiking, canoeing, camping, and bouldering. In Kasagi, they say that "the whole town is an outdoor destination."



Kasagidera Temple's massive rocks



Kasagi campground



Natural rock formations along the Kizu River



Canoeing along the Kizu River

The Unsung Heroes of Countryside Stays

Animals play an important role in family life.

When you stay in the Japanese countryside, you may encounter many kinds of animals. Sometimes, animals are integral to local activities or farming. But most often, the animals you meet will be part of the household.

At JUGEMU in Nachikatsuura, you will meet dogs and even donkeys. You can ride the donkeys or walk with them, and their dung plays a key role as compost.

Many places to stay don't typically offer a chance to spend time with animals, and so this can be a memorable aspect of staying in a farmhouse or someone's home. You may also have a chance to see how various creatures contribute to life in the countryside.

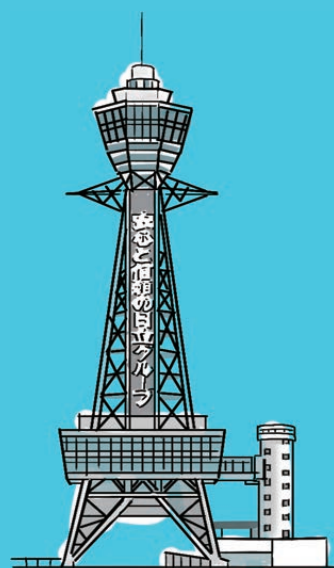


OSAKA

大阪

Unexpected treasures

Many people have a mental image of Osaka as a big, bustling city. But on this trip, you will experience its green appeal in the surrounding countryside, boosted by the hospitality and warm welcome that are key features of the Osaka character.



STAY

Nose

- | | |
|------------------------|------|
| ① Small hotel TONARI | P.22 |
| ② Farm Stay MICHIKUSA | P.22 |
| ③ Natsukashisa no mori | P.23 |

Extra hospitality

Remote work

Relaxing

Lots to do

Sleep in a renovated farmhouse



Nose

Small hotel TONARI

This former farmhouse has been renovated and revitalized, preserving its character while offering modern comfort. It consists of two buildings that are available for private rental. Each building is limited to one group per night, so you can relax in seclusion. Choose between the main two-story house, "Atelier no le," and the smaller house with a loft, "Tonari no Hanare." Unwind on the sofa or around the table, and tune into the natural surroundings.



Bed type
Futon on floor

Meal request

☐ Vegetarian ☐ Vegan
☐ Halal ☐ Gluten-free

English Menu Available.

Payment(E-money)

☐ Apple ☐ Google
☐ Alipay ☐ WeChat



MAP



Web

DATA

841-1 Kuragaki, Nose-cho, Toyono-gun, Osaka 563-0113

IN 16:00 OUT 10:00

Facility Rent entire place • Guesthouse

Rate 1 night, breakfast: from 28,000 yen / house (Max. 2 Persons)
60,000 yen / house (Max. 6 Persons)

Access

Car: 20 min. from Kameoka interchange.
Train: 15 min. by car from Myokenguchi Sta.

Parking

2 spaces. Shuttle service from Myokenguchi Sta. Max. 6 persons.

Meals

Breakfast included. Meals available in the local area.

Web

Instagram ID : atelier_tonari

Relax in peace
and privacy

Extra hospitality

Remote work

Relaxing

Lots to do

Nose

Farm Stay MICHIKUSA

During your stay in this traditional Japanese home, you can look forward to fresh eggs and vegetables that you've harvested yourself, and the stone oven will contribute to a great-tasting meal. A treehouse, campsite, beehives, and craft experiences are among the other highlights. At night, gaze up at a sky full of stars, away from the lights of the city.



Traditional Japanese folk house



Bed type
Futon on floor / Single bed

Meal request

☒ Vegetarian ☒ Vegan
☒ Halal ☒ Gluten-free

No English Menu.

Payment(E-money)

☐ Apple ☐ Google
☐ Alipay ☐ WeChat



MAP



Web

DATA

FARMerSTAY
Homestays

Guest rooms are in the annex.

1086 Jio, Nose-cho, Toyono-gun,
Osaka 563-0121

IN 15:30 OUT 10:00

Facility Farmhouse B&B

Rate 1 night, 2 meals: from 15,000 yen.

Access

Car: 20 min. from Minotodoromi interchange.
Train: 10 min. by car from Myokenguchi Sta.

Parking

30 spaces. Shuttle service from Myokenguchi Sta.

Meals

Breakfast and dinner included.

Web

<https://michikusa-nose.com/>

A sky
full of stars

Extra hospitality

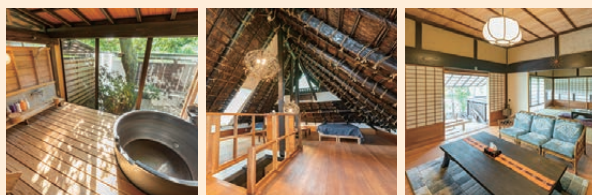
Remote work

Relaxing

Lots to do



Spacious and surrounded by nature



Nose

Natsukashisa no mori

A traditional home set in the shade of an ancient zelkova tree. Rent the entire place as a family, group of friends, or company retreat. You'll be welcomed by the owners. The house has been refurbished as a "Country Home of Learning" that introduces guests to the traditions and features of the countryside, including the 400-year-old building itself and the 1,300-year-old tree.



Bed type
Futon on floor / Triple bed

Meal request

☒ Vegetarian ☐ Vegan
☐ Halal ☐ Gluten-free

No English Menu.

Payment(E-money)

☐ Apple ☐ Google
☐ Alipay ☐ WeChat



MAP



Web

DATA

278 Nomainaji, Nose-cho, Toyono-gun, Osaka 563-0133

info@natsumori.jp

IN 15:00 OUT 11:00

Facility Farmhouse B&B • Rent entire place

Rate 1 night, breakfast: from 55,000 yen for entire house.
Max. 7 persons.

Access

Car: 15 min. from Kawanishi interchange.

Train: 10 min. by car from Myokenguchi Sta.

Parking

20 spaces. No shuttle service.

Meals

Breakfast included. Dinner can be reserved (additional fee).

Meals available in the local area.

Web

<http://natsumori.jp/>

With a majestic
1,300-year-old
tree

A word of welcome

These three inns are to be found at the northern tip of Osaka Prefecture in Nose, which is roughly a one-hour drive from Osaka City. In the summer the temperature is around 5 degrees Celsius cooler than in central Osaka, which is why Nose has been a summer retreat for many years. The Great Zelkova Tree is a designated natural monument. Between April and July, owls called Northern boobooks raise their young in the branches of the tree. Please visit the nearby Zelkova Tree Museum for local crafts.

Local support organization: Nose Natsukashisa promotion council



SHIGA

滋賀

KYOTO

京都

OSAKA

大阪

HYOGO

兵庫

NARA

奈良

WAKAYAMA

和歌山

HYOGO

兵庫

Endless variety

Hyogo has it all: greenery and ocean, cities and rural retreats. The prefecture has a north coast on the Sea of Japan and a south coast on the Seto Inland sea. There's always something new to discover in Hyogo.



STAY

Himeji (Ieshima)

① Ieshima Hare Terrace P.25

Asago

② EN P.26

Tamba-Sasayama

③ NIPPONIA Fukusumi Post Town P.27

④ Auberge mocca P.28



EXPERIENCE

Awaji

① Nature Guide & Retreat P.29

Sumoto

② Meal-making experience at Kamado P.29



Bed type
Futon on floor/Twin/Double

Meal request
☐ Vegetarian ☐ Vegan
☐ Halal ☐ Gluten-free
No English Menu.

Payment(E-money)
☐ Apple ☐ Google
☐ Alipay ☐ WeChat



MAP



Web

Himeji (Ieshima)

Hyogo Prefecture



Ieshima Hare Terrace

An inn on an island

This spacious two-story building has been fully renovated and can accommodate up to 15 people. We offer a variety of experiential programs, such as fishing equipment rental, guided tours of the town to experience the charm of island life, canoeing, and fishing tours by boat. Catering is also available upon advance reservation. Please spend a relaxing time with your family and friends on Ieshima.



The entrance



1



2

- 1 The view from the terrace
- 2 Swaying in a hammock with a view of the harbor town



DATA

522-56, Maura, Ieshimacho, Himeji-city, Hyogo 672-0101

IN 15:00~19:00 **OUT** 10:00

Facility Rent entire place
Rate 1 night, no meals : from 9,000 yen each. Max 15 persons.
Prices vary throughout the year.
Access Train: 30 min. by ferry from Himeji Port,
which can be reached in 30 min. by bus from Himeji Sta.
Parking Not available. No shuttle service.
Meals Meals available in the local area.
Web <http://airbnb.jp/h/ieshima-hareterrace>

In the room	Wi-Fi	Kitchen	Bath
	Shower	Air-conditioning	TV
Other	Fridge	Microwave	Washing machine
	Hair dryer		
	Hand towel	Bath towel	Toothbrush
	Soap/shower gel	Shampoo/conditioner	Yukata (loungewear)
Payment	Laundry detergent	Cutlery and plates	Seasonings
	Digital (some terms)	Credit card	Cash



Bed type
Twin bed

Meal request

- ☒ Vegetarian
 ☒ Vegan
☒ Halal
 ☐ Gluten-free

No English Menu.

Payment(E-money)

- ☐ Apple
 ☐ Google
☐ Alipay
 ☐ WeChat



MAP



Web

Asago

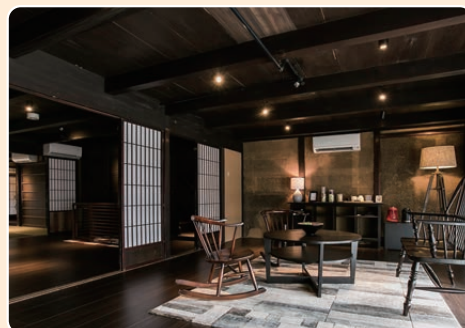
Hyogo Prefecture



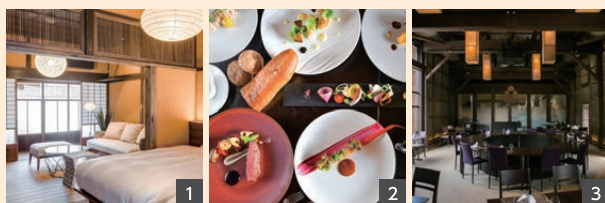
EN

Near the castle in the clouds

At the top of the mountain are castle ruins, and the old walls contribute to an iconic scene: a "castle in the clouds" effect that can be seen on days when the mountaintop rises above banks of morning mist. The hotel's renovated 400-year-old main building is the former Kimura Sake Brewery, and the hotel's five other buildings are all over 100 years old. The restaurant offers French cuisine featuring local ingredients such as Tajima beef.



Bring your pets with you



1 A bedroom in the annex.

2 A meal at the restaurant.

3 The restaurant occupies part of a former sake brewery.

DATA

363 Uemachi-nishigawa, Takeda, Wadayama-cho, Asago City Hyogo 669-5252

IN 15:00~20:00 OUT 12:00

- Facility** Hotel・Rent entire place
Rate 1 night, no meals: from 24,200 yen per person. Max 6 persons.
Access Car: 10 min. from Wadayama interchange.
 Train: 3 min. on foot from Takeda Sta.
Parking Available. No shuttle service.
Meals Breakfast and dinner can be reserved (additional fee).
Web <https://www.takedacastle.jp/en/lp/>

	Wi-Fi	Kitchen	Bath
In the room	Shower	Air-conditioning	TV
	Fridge	Microwave	Washing machine
	Hair dryer		
	Hand towel	Bath towel	Toothbrush
Other	Soap/shower gel	Shampoo/conditioner	Yukata (loungewear)
	Laundry detergent	Cutlery and plates	Seasonings
Payment	Digital (some forms)	Credit card	Cash





Bed type
 Single bed

Meal request
☐ Vegetarian ☐ Vegan
☐ Halal ☐ Gluten-free
No English Menu.

Payment(E-money)
☐ Apple ☐ Google
☐ Alipay ☐ WeChat

MAP
 Web

Tamba-Sasayama
 Hyogo Prefecture

NIPPONIA Fukusumi Post Town

A well-conserved townscape

Fukusumi is a town that retains the vestiges of a post town where people came and went and entertained feudal lords (daimyo) during the Edo period. The 250-year-old historic mansion's approximately 500 tsubo site is available for private and luxurious use. The five bedrooms are independent spaces with individual baths and toilets, making it possible for groups to relax.

Dinner featuring wild boar shabu shabu produced by a 2-star chef, mackerel sushi from a long-established local restaurant, and sweets made by a local pastry chef, as well as organic breakfast from a local natural yeast bakery, are also attractive.



- 1 A room in a renovated mansion.
- 2 Each guest room has a wooden bathtub.
- 3 Breakfast of natural yeast bread and organic salad.



Wild boar shabu shabu, produced by a 2-star chef

DATA

378 Fukusumi, Tamba-Sasayama City, Hyogo 669-2513

IN 15:00~18:00 **OUT** 11 : 00

Facility Hotel
Rate One night stay with no meal 88,000 yen~/house (max. 12 persons)
Access Car: 25 min. from Tannansasayama interchange.
 Train: 30 min. by car or bus from Sasayamaguchi Sta.
Parking 7 spaces.
Meals Breakfast and dinner included. Craft beer bar, lounge.
Web <https://nipponia-fukusumi.jp/>

In the room	Wi-Fi	Kitchen	Bath
	Shower	Air-conditioning	TV
	Fridge	Microwave	Washing machine
	Hair dryer		
Other	Hand towel	Bath towel	Toothbrush
	Soap/shower gel	Shampoo/conditioner	Yukata (loungewear)
	Laundry detergent	Cutlery and plates	Seasonings
	Digital (some forms)	Credit card	Cash
Payment			



Extra hospitality

Remote work

Relaxing

Lots to do



Bed type
Bed(160×195cm)

Meal request

☐ Vegetarian ☐ Vegan
☐ Halal ☐ Gluten-free

No English Menu.

Payment(E-money)

☐ Apple ☐ Google
☐ Alipay ☐ WeChat



MAP



Web

Tamba-Sasayama



Hyogo Prefecture

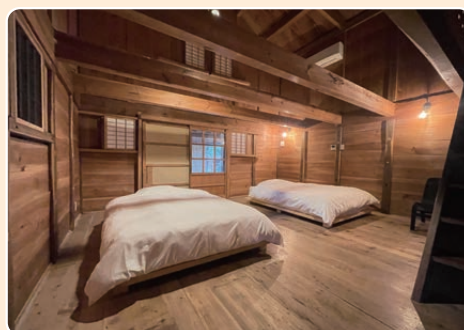
Auberge mocca

Former home of a village headman

This refurbished traditional building was the home of the village headman until the later years of the 19th century.

Facilities include a café, woodworking studio, and co-working space.

A quiet setting amid fields and forested hills.



You can stay in the mansion's former storehouse

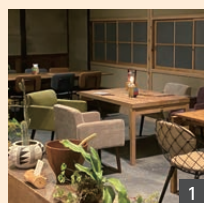
DATA

510 Oyamamiya, Tamba-Sasayama City, Hyogo 669-2802

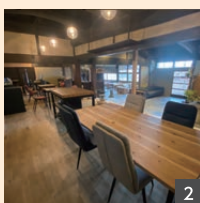
IN 16:00 **OUT** 10:00

Facility Rent entire place
Rate 1 night, no meals: from 66,000 yen. Max. 8 persons.
Access Car: 15 min. from Tannansasayamaguchi interchange.
Train: 15 min. by car from Sasayamaguchi Sta.
Parking 10 spaces. No shuttle service.
Meals Breakfast and dinner can be reserved (additional fee).
Web [https://www.airbnb.jp/rooms/864835029768403955?](https://www.airbnb.jp/rooms/864835029768403955?source_impression_id=p3_1694237303_RbW1gCxpZLu1SLC)
[source_impression_id=p3_1694237303_RbW1gCxpZLu1SLC](https://www.airbnb.jp/rooms/864835029768403955?source_impression_id=p3_1694237303_RbW1gCxpZLu1SLC)

In the room	Wi-Fi Shower Fridge Hair dryer	Kitchen Air-conditioning Microwave	Bath TV Washing machine
Other	Hand towel Soap/shower gel Laundry detergent	Bath towel Shampoo/conditioner Cutlery and plates	Toothbrush Yukata (loungewear) Seasonings
Payment	Digital (some forms)	Credit card	Cash



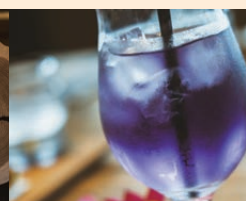
1 The café.



2 The co-working space.



3 Craft experience.





Awaji

Hyogo Field Pavilion Certification Program Smile∞Ribbon

Awaji Island, the island of the myth of the birth of the nation Nature Guide & Retreat ~Gigantic Stone~

In Japan's oldest books, Kojiki and Nihonshoki, it is written that two ancestral deities, Izanagi and Izanami, created the land of Japan from Awaji Island, which is why it is called "the island of the birth of the nation". In this retreat (tour), you will visit Iwakura, a rock formation and megaliths, which are the deities of these two Gods.



- 1 "Amanoiwafune," a sacred place where ancient letters float.
- 2 Diving into the womb and entrance to the birth canal at Izanami Rock
- 3 After experiencing the "Reborn rebirth"
A beautiful world spread out before your eyes



MAP



Web

Reservation required (by 3 days before)

185-15, Murotsu, Awaji City, Hyogo 656-1606

Available	All year (Except July, Aug. and Sept.)
Capacity	1 to 6 persons
Duration	5 hours (10:00-15:00)
Rate	Adult 6,000 yen each *Conditions for participation: Healthy people between junior high school age and 65 years old
Access	Car: 5 min. from Hokudan interchange Bus: 6 min walk from Murotsu bus stop
Web	https://note.com/smileribbon55/n/ncc02a92e16ac

A word of welcome

Surrounded by the sea, Awaji Island has long been known as Miketsukuni, an island rich in natural delicacies. It is close to the Keihanshin area and is approximately one hour by expressway from both Kobe Airport and Shin-Kobe Station. Crossing the Akashi Kaikyo Bridge, visitors can enjoy a resort-like atmosphere.

About the Council Harvest Experience and Lodging

Strawberry picking (Jan. to late May): Awaji Country Garden
Calendula picking (March to early May): Hirota Farm
Blueberry picking (June to early Sept.): Blueberry Hill Awaji
Herb picking and distilling (year-round): Awaji Island Gurumeya

Along with the experience, there are old private houses, cottages, pensions, and rental villas. There are also wineries and accommodations for each type of visitors. Please enjoy Awaji Island not only by experiencing it, but also by staying overnight. (Council website: <https://www.awajishima-farmstay.com/> / Inquiry: 050-3390-0093)



Blueberry Hill Awaji Culinary inn of nostalgia
KAIRI



Sumoto

Awaji369farm

Meal-making experience at Kamado

Naturally grown, pesticide and fertilizer-free traditional vegetables and rare fixed and native vegetables are harvested on the spot. The rice cooked in the kamado and the miso soup are the best I have ever tasted! Miso soup made with harvested vegetables is also excellent! Experience the traditional way of life and warm your body and soul.



- 1 Rice cooked in a kamado is exceptional!
Learn the wisdom and ingenuity of the old ways.
- 2 Cooking freshly picked vegetables.
- 3 Enjoy with your family, friends, and everyone else!



MAP



Web

Reservation required (by 3 days before)

12, Tsushimanzai, Goshiki-cho, Sumoto City,
Hyogo 656-1304

Available	Sundays (All year)
Capacity	2 to 20 persons (consult with us for groups)
Duration	11:00 - 14:30 (3.5 hours)
Rate	Adult 9,600 yen each
Access	Car: 15 min. from Awaji Chuo Smart interchange Bus: 10 min. walk from Goshiki Bus Center
Web	https://www.awaji369.com

A word of welcome

For lodging, there is "Wesness Park Goshiki (0799-33-1600)" located 2 minutes away by car. Please contact them directly to confirm room availability.



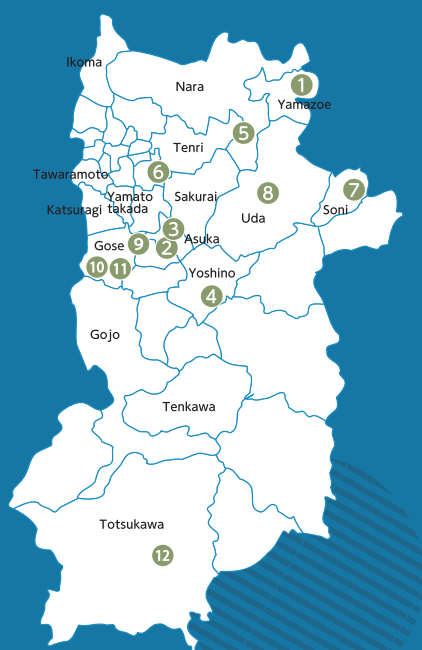
NARA

奈良

The heartland of Japan

It was in Nara that the nation of Japan began to take shape, even before the decades in the 8th century that are now known as the Nara period.

Passing through scenery that in the distant past inspired celebrated verse, you will visit communities and reach destinations that bear traces of Japan's formative identity.



STAY

Yamazoe	
① ume, yamazoe	P.31
Asuka	
② ASUKANO OYADO KITORA	P.32
③ BRANCHERA VILLA ASUKA	P.32
Yoshino	
④ Guest House Kisano Seseragi	P.33
Tenri	
⑤ Yamato kogen Bosco Villa	P.34
Tawaramoto	
⑥ NIPPONIA TAWARAMOTO MARUTO SHOYU	P.35
Soni	
⑦ Soni Kodama Resort TAWA	P.36
Uda	
⑧ Uda Medicinal Bath Inn Yatakiya	P.37
Gose	
⑨ Japanese Old Folk Life Katsuemon	P.38
⑩ Old Folk House Omoya-Morimoto	P.38
⑪ Gose-no-Yado Tayumu	P.39
Totsukawa	
⑫ Oomori no Sato	P.40



Yamazoe

Nara Prefecture



Bed type
Futon on floor/Double bed

Meal request

☒ Vegetarian ☒ Vegan
☐ Halal ☒ Gluten-free
[English Menu Available.](#)

Payment(E-money)

☒ Apple ☐ Google
☐ Alipay ☐ WeChat



MAP



Web

ume, yamazoe

A stress-free mountain retreat

"ume, yamazoe" is the name of this refurbished house in a forest setting on the edge of Yamazoe village. As a booking covers all three rooms, you'll have the whole place to yourself. Great for a family trip or executive retreat. Gaze out over the village rooftops, make friends with the locals, walk through the forest, relax in a wood-fired sauna. What you may find you're not doing is spending hours scrolling through social media. There's no Wi-Fi, and the village doesn't even have one of Japan's celebrated convenience stores. Book your digital detox in Yamazoe now!



A fully refurbished house that dates back over a century

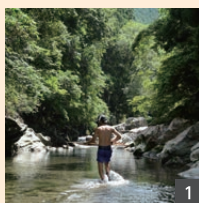
DATA

452 Katahira, Yamazoe-mura, Yamabe-gun, Nara 630-2356

IN 15:00 OUT 11:00

Facility Rent entire place
Rate 1 night, 2 meals, 2 persons: 69,300 yen. Max. 8 persons.
Access Car: 7 min. from Yamazoe interchange.
Train: 17 min. by car from Nabari Sta.
Parking 5 spaces. Shuttle service from Nabari Sta. Max. 4 persons.
Meals Breakfast and dinner included.
Web <https://www.ume-yamazoe.com/>

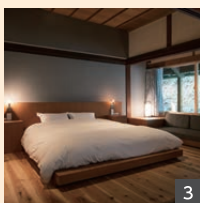
In the room	Wi-Fi	Kitchen	Bath
	Shower	Air-conditioning	TV
	Fridge	Microwave	Washing machine
Other	Hair dryer		
	Hand towel	Bath towel	Toothbrush
	Soap/shower gel	Shampoo/conditioner	Yukata (loungewear)
Payment	Laundry detergent	Cutlery and plates	Seasonings
	Digital (some forms)	Credit card	Cash



1 The river is a highlight at any time of year.



2 Meals feature fresh local ingredients.



3 Big beds and warm wood interiors.

A word of welcome

We believe that a single experience or chance encounter may in retrospect prove to have been a major turning point in life. That's exactly the outcome we're hoping for when you stay at ume, yamazoe. We want this to be a place where you recharge your life, drawing power from Yamazoe's nature. And maybe one day, years in the future, you'll look back nostalgically and recall what happened "that time" you were in the village of Yamazoe.

Extra hospitality

Remote work

Relaxing

Lots to do



- 1 Meals feature homegrown seasonal vegetables.
- 2 Your friendly host prepares ingredients that she herself has grown.
- 3 An open-air bath with a big Shigaraki ceramic bathtub.



Asuka

ASUKANO OYADO KITORA

Before the Nara period was the Asuka period (538-710), when Asuka was the capital. This is the atmospheric setting for "Asuka Lodging Kitora," a refurbished traditional farmhouse dating back well over 150 years.

You'll sleep on futons and dine seated around a table, a relaxing combination.



Bed type

Futon on floor/Single bed

Meal request

- ☒ Vegetarian ☒ Vegan
☐ Halal ☐ Gluten-free
No English Menu.

Payment(E-money)

- ☐ Apple ☐ Google
☐ Alipay ☐ WeChat



MAP

Web

DATA



204 Abeyama, Asuka-mura, Takaichi-gun, Nara 634-0134 Guest rooms are in the main house.

IN 15:00 OUT 11:00

Facility Inn

Rate 1 night, no meals: from 10,000 yen each. Max. 6 persons.

Access

Car: 60 min. from Yamatokoriyama/Hari interchange. Train: 12 min. on foot from Tsubosakayama Sta.

Parking

3 spaces. No shuttle service.

Meals

Breakfast and dinner can be reserved (additional fee).

Web

<https://asuka-kitora.com/>

In the room	Wi-Fi Shower Fridge Hair dryer Hand towel Soap/shower gel Laundry detergent	Kitchen Air-conditioning Microwave Bath towel Shampoo/conditioner Cutlery and plates	Bath TV Washing machine Toothbrush Yukata (loungewear) Seasonings
Other			
Payment	Digital (some forms)	Credit card	Cash

Extra hospitality

Remote work

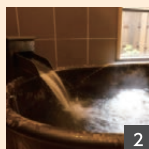
Relaxing

Lots to do

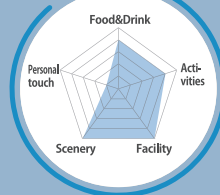
Asuka

BRANCHERA VILLA ASUKA

Officially acknowledged as a cultural property, this expansive home built in 1871 combines a captivating traditional interior with features of a modern hotel. It is conveniently located for exploring historical and cultural sites. See the English website for details.



- 1 Every room has a traditional appeal.
- 2 A large Shigaraki ceramic bathtub.
- 3 Your very own private Japanese garden.



Bed type

Futon on floor/Single bed

Meal request

- ☐ Vegetarian ☐ Vegan
☐ Halal ☐ Gluten-free
No English Menu.

Payment(E-money)

- ☐ Apple ☐ Google
☐ Alipay ☐ WeChat



MAP

Web

DATA

660 Asuka, Asuka-mura, Takaichi-gun, Nara 634-0103

IN 15:00 OUT 11:00

Facility Hotel

Rate 1 night, 2 meals: from 59,700 yen per 2 persons.
 (The rate will vary depending on the number of people.)

Access

Car: 40 min. from Yamatokoriyama interchange. Train: 15 min. by bus from Kashiharajingumae Sta.

Parking

3 spaces. No shuttle service.

Meals

Breakfast and dinner included.

Web

<https://www.haseko-stay.jp/english/>

In the room	Wi-Fi Shower Fridge Hair dryer Hand towel Soap/shower gel Laundry detergent	Kitchen Air-conditioning Microwave Bath towel Shampoo/conditioner Cutlery and plates	Bath TV Washing machine Toothbrush Yukata (loungewear) Seasonings
Other			
Payment	Digital (some forms)	Credit card	Cash

A word of welcome

Our aim is to share the best of Japan's good old days in the warm and welcoming environment of a private home, which is the literal meaning of "minka." Minka Homestay is available in several locations in Nara. Traditional Japanese homes nurture a sense of belonging, which may contribute much to a child's development. We like to believe that a stay in a Minka Homestay will foster healthy personal growth for all.

Local support organization: Asuka Exchange Promotion Association



Bed type
 Futon on floor

Meal request
☐ Vegetarian ☐ Vegan
☐ Halal ☐ Gluten-free
No English Menu.

Payment(E-money)
☐ Apple ☐ Google
☐ Alipay ☐ WeChat

MAP
 Web

Yoshino
Nara Prefecture



Guest House Kisano Seseragi

Self-catering in a former community center

Mt. Yoshino has long been loved for its cherry blossoms. From there, if you walk down a trail named after Japan's famous poetry anthology, Manyoshu, you will eventually find yourself outside Guest House Kisano Seseragi, a converted community center. Situated in a quiet location next to a mountain stream, this facility is a great base for exploring the Nakasho district, with its many historical links. A well-appointed kitchen also features a useful table for catching up on mail or playing games with the family.



Up to 10 guests



- 1 The famed cherry blossoms of Mt. Yoshino.
- 2 Kitchen table.
- 3 The bath.

DATA

152-1 Kisadani, Yoshino-cho, Yoshino-gun, Nara 639-3442

IN 15 : 00 OUT 10 : 00

Facility	Rent entire place
Rate	1 night, no meals, 2 persons: from 10,000 yen. Max. 10 persons.
Access	Car: 50 min. from Hari interchange. Train: Yamatokamichi Sta. then bus to Miyataki Bus Stop.
Parking	20 spaces. No shuttle service.
Meals	No meals or self-catering, but meals are available locally.
Web	http://nakasyouchiku-machizukuri-kyougikai.com/

In the room	Wi-Fi	Kitchen	Bath
	Shower	Air-conditioning	TV
	Fridge	Microwave	Washing machine
	Hair dryer		
Other	Hand towel	Bath towel	Toothbrush
	Soap/shower gel	Shampoo/conditioner	Yukata (bathgown)
	Laundry detergent	Cutlery and plates	Seasonings
Payment	Digital (some forms)	Credit card	Cash

A word of welcome

A community center, "kominkan" in Japanese, serves a key role in local life in Japan. As the local population declined, we decided to seek a new way to keep the building in use, and now you can enjoy staying there! The local area has lots to offer, including a scenic river, historical sites, and a soy sauce brewery that makes use of giant wooden casks. That wood comes from the mountains of Yoshino.

Local support organization: Nakasho Community Committee

 Extra hospitality

 Remote work

 Relaxing

 Lots to do


Bed type
Futon on floor/Twin bed

Meal request

☒ Vegetarian ☐ Vegan
☐ Halal ☐ Gluten-free

No English Menu.

Payment(E-money)

☐ Apple ☐ Google
☐ Alipay ☐ WeChat



MAP



Web

Tenri

Nara Prefecture



Yamato kogen Bosco Villa

A modern facility combining East and West

Bosco Villa is surrounded by nature in the mountains to the east of Nara and Tenri. Here you can enjoy a refreshing reprieve from the heat of summer and dazzling displays of color in the spring and autumn.

Close by are sports and other options for the active visitor. Accommodation choices include cottages and rooms that combine Western and Japanese features. Please refer to the photos on the website.



Seasonal delicacies

DATA

 3918 Hari-cho, Nara 632-0251

IN 15:00 **OUT** 11:00

Facility Ryokan

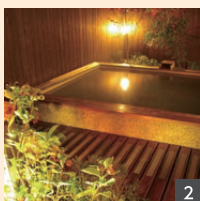
Rate 1 night, 2 meals: from 13,794 yen.

Access Car: 1 min. from Ipponmatsu interchange.
Train: 20 min. by car from Tenri Sta. or Haibara Sta.

Parking 200 spaces. Shuttle service from Tenri Sta. or Haibara Sta. Max. 50 persons.

Meals Breakfast and dinner included.

Web <https://www.boscovilla.jp>



1 One of various room options.

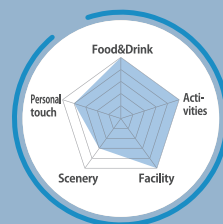
2 Bathe in carbonated water.

3 A local market.

A word of welcome

The area between the mountains to the east of Tenri city is a village forest, which has long maintained its rich ecosystem that is characterized by the highlands. The community in the area has inherited its rural culture, which has been handed down for hundreds of years. The Highland Regional Communication Council was established to pass on the virtues and beauty of the village forest as well as to let the world know about it and experience it. We hope you come and visit the village forest to the east of Tenri city.

Local support organization: Highland Regional Communication Council



Bed type

Twin bed/Double bed

Meal request

☒ Vegetarian ☒ Vegan
☐ Halal ☐ Gluten-free

No English Menu.

Payment(E-money)

☐ Apple ☐ Google
☐ Alipay ☐ WeChat



MAP



Web

Tawaramoto

Nara Prefecture



NIPPONIA TAWARAMOTO MARUTO SHOYU

A stylish former soy sauce brewery

Maruto Shoyu was the name of a soy sauce brewery founded in 1689 that once occupied these premises, and guests to this day can learn how to make soy sauce during their stay. After a storied history including a visit by the Imperial Family, the brewery hit hard times and closed. Now it has been reincarnated as a hotel that retains a sense of the brewery's heyday. You can look forward to beautiful rooms with modern comforts. This is also an excellent base for activities including farm experiences and cycling.



- 1 Vegetables taste even better thanks to special soy sauce.
- 2 The soy sauce experience.
- 3 Harvesting organic vegetables.



Guest rooms showcase the building's former identity

DATA

170 Iyodo, Tawaramoto-cho, Shiki-gun, Nara 636-0243

IN 15:00 OUT 10:00

Facility Ryokan
Rate 1 night, 2 meals: from 36,100 yen per person.
Access Car: 20 min. from Tenrihigashi interchange.
 Train: 10 min. by car from Tawaramoto Sta.
Parking 15 spaces. Shuttle service from Tawaramoto Sta. Max. 9 persons.
Meals Breakfast and dinner included.
Web <https://maruto-shoyu.co.jp/en/>

In the room	Wi-Fi	Kitchen	Bath
	Shower	Air-conditioning	TV
	Fridge	Microwave	Washing machine
Other	Hair dryer		
	Hand towel	Bath towel	Toothbrush
	Soap/shower gel	Shampoo/conditioner	Yukata (loungewear)
Payment	Laundry detergent	Cutlery and plates	Seasonings
	Digital (some forms)	Credit card	Cash

A word of welcome

We invite you to explore the local community via the codes below.


Local support organization: Tawaramoto Kawahigashi District Resource Activation Association




Petit Choko Journey

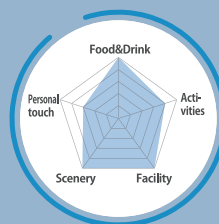


Tawaramoto Town Tourism
Promotion Organization

 Extra hospitality

 Remote work

 Relaxing

 Lots to do


Bed type
Futon on floor/Single bed

Meal request

☒ Vegetarian ☒ Vegan
☒ Halal ☒ Gluten-free
English Menu Available.

Payment(E-money)

☐ Apple ☐ Google
☐ Alipay ☐ WeChat



MAP



Web

Soni

Nara Prefecture



Soni Kodama Resort TAWA

A building as old as modern Japan

While Nara is frequently linked to the early days of the Japanese nation, here you can stay in a fully renovated building that dates from the dawn of modern Japan in 1868.

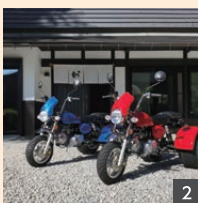
A motor trike is a convenient way to make your way to local sightseeing spots and a hot spring bath. Comfortable beds await at the end of the day.

No more than two guest groups per day. Pets: please check when you book.

You can find more information on the English website.



1 Original Japanese cuisine featuring local ingredients.



2 The motor trikes.



3 Soni Highlands.



Rice cooked the old-fashioned way

DATA

 665 Taroji, Soni-mura, Uda-gun, Nara 633-1202

IN 15:00 OUT 10:00



Guest rooms are in the annex.

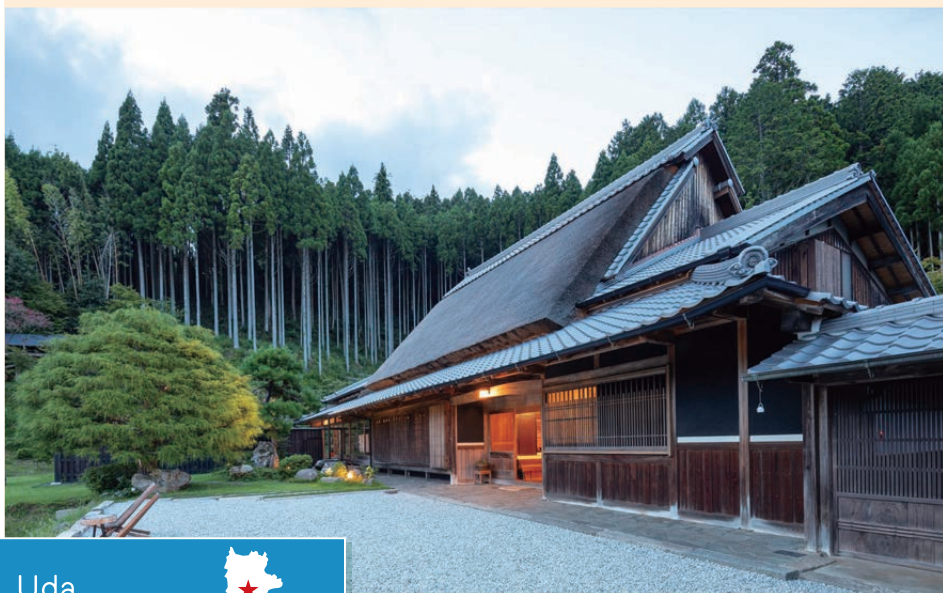
Facility Rent entire place
Rate 1 night, 2 meals: 21,010 yen per person. Max. 8 persons.
Access Car: 40 min. from Hari interchange.
 Train: 40 min. by bus from Nabari Sta.
Parking 10 spaces. Shuttle service on request.
Meals Breakfast and dinner included.
Web <https://soni-kodamaresort.com/information/guidance/english/>

In the room	Wi-Fi	Kitchen	Bath
	Shower	Air-conditioning	TV
	Fridge	Microwave	Washing machine
	Hair dryer		
Other	Hand towel	Bath towel	Toothbrush
	Soap/shower gel	Shampoo/conditioner	Yukata (loungewear)
	Laundry detergent	Cutlery and plates	Seasonings
Payment	Digital (some forms)	Credit card	Cash

A word of welcome

Something we'd like you to notice about staying at Soni Kodama Resort TAWA is the positive value of inconvenience. We believe that tackling minor challenges fosters mindfulness and empathy but see for yourself!

Local support organization: Soni Village Community Exchange Promotion Association



Bed type
Single bed

Meal request

☒ Vegetarian ☒ Vegan
☒ Halal ☐ Gluten-free

No English Menu.

Payment(E-money)

☐ Apple ☒ Google
☒ Alipay ☒ WeChat



MAP



Web

Uda

Nara Prefecture



Uda Medicinal Bath Inn Yatakiya

A soothing stay under a thatched roof

If you're hoping to get away from it all, this refurbished traditional home in a serene green setting makes an excellent choice. Each of the four guest rooms has a different soothing appeal. Many ingredients served in the restaurant's original Italian cuisine come from the hotel's own organic vegetable garden. Stroll around the vicinity, swing around on a rope, find yourself a hammock. Drift off to the sounds of nature. Relax!



Pets are welcome when bookings allow

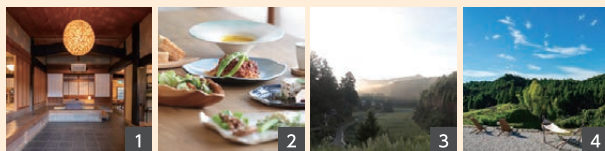
DATA

1835 Haibarayataki, Uda City, Nara 633-0216

IN 15:30 **OUT** 10:00

Facility Hotel
Rate 1 night, 2 meals, 2 persons: from 70,400 yen. Max. 4 persons.
Access Car: 30 min. from Hari interchange.
Train: 10 min. by car from Haibara Sta.
Parking 8 spaces. Shuttle service from Haibara Sta.
Meals Breakfast and dinner included.
Web <https://www.chillinn.com/17f52bd784b123/plan#hotelMenu>

In the room	Wi-Fi	Kitchen	Bath
	Shower	Air-conditioning	TV
	Fridge	Microwave	Washing machine
Other	Hair dryer		
	Hand towel	Bath towel	Toothbrush
	Soap/shower gel	Shampoo/conditioner	Yukata (loungewear)
Payment	Laundry detergent	Cutlery and plates	Seasonings
	Digital (some forms)	Credit card	Cash



- 1 An atmospheric interior.
- 2 Sustenance for mind and body.
- 3 Scene from an early morning walk.
- 4 "Star Hill" to view the night sky surrounded by forests

A word of welcome

Guests at Uda Medicinal Bath Inn Yatakiya are offered an unusual experience: an early morning "Weather Lore Tour" led by a local expert. Many locations in Nara are linked to incidents from long ago. A 15-minute walk through the forest here will take you to the tomb of a general who fought in the 7th-century Jinshin Disturbance.

Local support organization: Uda Folkhouse and Regional Resource Activation Association

Extra hospitality

Remote work

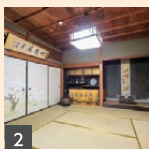
Relaxing

Lots to do



1

- Step into your very own traditional home and garden.
- An interior redolent of early 20th-century Japan.
- The local townscape takes you back 200 years or more.



2



3

Gose

Japanese Old Folk Life Katsueemon

"Kominka" denotes an old folk house, many examples of which you have encountered in the pages of this guide.

Kominka Katsueemon is an especially cozy example, with moss in the garden and food ranging from local delicacies to French cuisine prepared exclusively for you.

Or you may simply prefer to enjoy cooking for yourself in a peaceful old house that dates to 1914.



Bed type

Futon on floor/Single bed

Meal request

- ☒ Vegetarian ☐ Vegan
☒ Halal ☒ Gluten-free
No English Menu.

Payment(E-money)

- ☐ Apple ☐ Google
☐ Alipay ☐ WeChat



MAP

Web

DATA



166 Imazumi, Gose City, Nara 639-2245

Guest rooms are in the annex.

IN 14:00 OUT 10:00

Facility Rent entire place

Rate 1 night no meals: from 12,000 yen each.

Access Car: 10 min. from Goseminami interchange.
 Train: 10 min. on foot from Ichio Sta.
Parking 10 spaces. Shuttle service from Ichio Sta.
 Max. 5 persons.
Meals Breakfast and dinner can be reserved (additional fee).
Web <https://www.kominka-gurashi.com/>

In the room	Wi-Fi Shower Fridge Hair dryer	Kitchen Air-conditioning Microwave	Bath TV Washing machine
Other	Hand towel Soap/shower gel Laundry detergent	Bath towel Shampoo/conditioner Cutlery and plates	Toothbrush Yukata (loungewear) Seasonings
Payment	Digital (some forms)	Credit card	Cash

Extra hospitality

Remote work

Relaxing

Lots to do

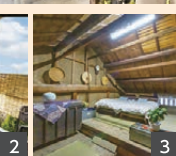
Gose

Old Folk House Omoya-Morimoto

Authentic Japan awaits at Omoya Morimoto, a welcoming countryside home with great views, farm work, home cooking, sauna, piano, and the many other touches that make each farmhouse B&B stay a unique experience. The building itself dates back 120 years and is located near the foot of Mt. Kongo, where deities have been known to alight.



1



- The heartfelt welcome.
- The open-air bath.
- The attic bedroom.



Bed type

Futon on floor

Meal request

- ☒ Vegetarian ☒ Vegan
☒ Halal ☒ Gluten-free
No English Menu.

Payment(E-money)

- ☐ Apple ☐ Google
☐ Alipay ☐ WeChat



MAP

Web

DATA



994 Nishisabi, Gose City, Nara 639-2345

Guest rooms are in the main house.

IN 16:00 OUT 10:00

Facility Farmhouse B&B

Rate 1 night, 2 meals: from 10,000 yen each.
1 night no meals: from 7,000 yen each.

Access Car: 15 min. from Goseminami interchange.
 Train: 15 min. by car from Kintetsu-Gose Sta.
Parking 10 spaces. Shuttle service from Kintetsu-Gose Sta. Max. 4 persons.
Meals Breakfast and dinner included.
Web <https://www.omoya-morimoto.jp/>

In the room	Wi-Fi Shower Fridge Hair dryer	Kitchen Air-conditioning Microwave	Bath TV Washing machine
Other	Hand towel Soap/shower gel Laundry detergent	Bath towel Shampoo/conditioner Cutlery and plates	Toothbrush Yukata (loungewear) Seasonings
Payment	Digital (some forms)	Credit card	Cash

A word of welcome



Even if you don't speak Japanese, we hope you'll get a sense of the fun to be had in the area where the two facilities on this page are located by visiting our website. Our aim is to offer enjoyable farm-related experiences and other countryside activities that make the best possible use of the natural resources around Mt. Kongo and Mt. Yamato Katsuragi.

Local support organization: Eco Resort Gose-kyo

Extra hospitality

Remote work

Relaxing

Lots to do



Gose

Gose-no-Yado Tayumu

Gose no Yado Tayumu has a site area of 30,000 square meters. The main house is surrounded by mountains and is "just a house". The grounds include a thatched gate, a pond, a stream, a well, a mobile kamado, and a field. The house is also detached, and at the tent site in front of the detached house, you can cook rice in the kamado, have meals, barbecue, and Nagashi Somen (noodles) upon request (various types of fees apply). Next door is Senshuku-ji Temple, one of the Kansai Flower Temples, which is celebrating its 1,400th anniversary. Within a 5-10 minute drive, there is "Takamahiko Shrine," which is said to be the place where the gods lived on the stage of the descent of the grandchildren in Japan's oldest book "Kojiki". There is also a trailhead for Mt. Katsuragi on Mt. Kongo, and walks along the Katsuragi Historic Trail are popular. You can enjoy a trip to heal your mind and body while feeling the old history inside and outside the premises.



Bed type
Futon on floor/Single bed

Meal request

☐ Vegetarian ☐ Vegan
☐ Halal ☐ Gluten-free

No English Menu.

Payment(E-money)

☐ Apple ☐ Google
☐ Alipay ☐ WeChat



MAP



Web

- 1 An old private home where you can enjoy all five senses surrounded by rich nature
- 2 Harvesting your own vegetables and making your own rice in a kamado
- 3 Tour nostalgic Japanese original landscapes and shrines



DATA

367 Funaji, Gose, Nara City 639-2268

IN 15:00 **OUT** 10:00

Facility Farmhouse · Rent entire place

Rate 1 night, no meals: 12,000 yen person (Max. 8 persons)

Access

Car: 60 min, from Shin-Osaka Sta.
Train: 10 min, from JR/Kintetsu Gose Sta.
Bus: 10 min, walk from Funaji bus stop for Gojo
(Shuttle service from JR/Kintetsu Gose Sta./Max. 6 persons)

Parking

10 spaces

Meals

Meals available(Additional fee) in the local area (Reservation required)

Web

<https://tayumu-gose.studio.site>

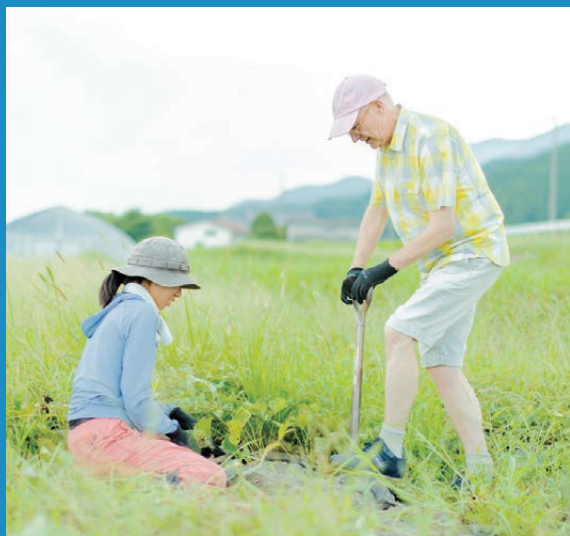
In the room	Wi-Fi	Kitchen	Bath
	Shower	Air-conditioning	TV
	Fridge	Microwave	Washing machine
	Hair dryer		
Other	Hand towel	Bath towel	Toothbrush
	Soap/shower gel	Shampoo/conditioner	Yukata (lingewear)
	Laundry detergent	Cutlery and plates	Seasonings
Payment	Digital (some forms)	Credit card	Cash



A word of welcome

Even if you don't speak Japanese, we hope you'll get a sense of the fun to be had in the area where the two facilities on this page are located by visiting our website. Our aim is to offer enjoyable farm-related experiences and other countryside activities that make the best possible use of the natural resources around Mt. Kongo and Mt. Yamato Katsuragi.

Local support organization: Eco Resort Gose-kyo



Eco Resort
Gose



Extra hospitality



Remote work



Relaxing



Lots to do

SHIGA

滋賀

KYOTO

京都

OSAKA

大阪

HYOGO

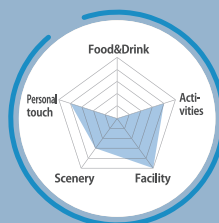
兵庫

NARA

奈良

WAKAYAMA

和歌山

**Bed type**

Futon on floor/Single bed

Meal request

- ☐ Vegetarian ☐ Vegan
☐ Halal ☐ Gluten-free

No English Menu.**Payment(E-money)**

- ☐ Apple ☐ Google
☐ Alipay ☐ WeChat



MAP



Web

Totsukawa

Nara Prefecture



Oomori no Sato

A Totsukawa-style dwelling rethought for the modern world

This sophisticated accommodation, renovated under the guidance of the renowned cultural curator Alex Kerr, is two hours from the nearest built-up area. This, finally, is the real Japan, far off the beaten track.

The local district is known for a summer folk dance that dates back centuries, and an onsen fed by the pure, undiluted water of a hot spring.



Rooms that conjure up a new cultural identity



Wooden surfaces add to cooking pleasure.

DATA

487 Musashi, Totsukawa-mura, Yoshino-gun, Nara 637-1332

IN 15:00~19:00 **OUT** 10:00

Facility Rent entire house・Guesthouse

Rate 1 night, no meals: from 8,000 yen per person. Max. 4 persons.

Access Car: 90 min. from Gojo interchange.
Train: 120 min. by car from Yamato-Yagi Sta.

Parking 2 spaces. No shuttle service.

Meals No meals or self-catering.

Web <http://www.totsukawa-stay.com/>

In the room	Wi-Fi	Kitchen	Bath
	Shower	Air-conditioning	TV
	Fridge	Microwave	Washing machine
	Hair dryer		
Other	Hand towel	Bath towel	Toothbrush
	Soap/shower gel	Shampoo/conditioner	Yukata (loungewear)
	Laundry detergent	Cutlery and plates	Seasonings
Payment	Digital (some forms)	Credit card	Cash

A word of welcome

While you're in Totsukawa, please do try mehari-zushi, a local delicacy, and perhaps harvest some seasonal vegetables for your evening meal. We would be delighted to share information about events and attractions in Totsukawa Village.

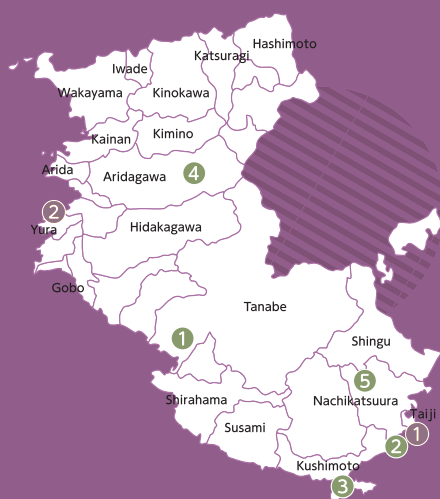
Local support organization: Totsukawa Village Inbound Acceptance Council

WAKAYAMA

和歌山

A destination for the serious traveler

The Kumano Kodo, an ancient pilgrimage route, lies mainly inside Wakayama. It's sometimes described as the origin of Japanese tourism. Today, you can walk the same paths as pilgrims of long ago while experiencing a new form of travel. Wakayama's countryside stays will bring you closer to the nature and lifestyle of each area.



STAY

Tanabe	
① Akizuno Garten	P.42
Taiji	
② HAKUGEI	P.43
Kushimoto	
③ NIPPONIA HOTEL KUSHIMOTO KUMANOKAIDO	P.44
Aridagawa	
④ Kasamatsu-tei	P.46
Nachikatsuura	
⑤ JUGEMU	P.47

EXPERIENCE

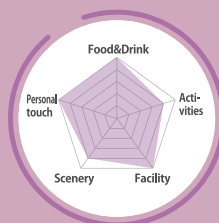
Taiji	
① Taiji Field Kayak	P.43
Yura	
② Shirasaki Cruises	P.45

Extra hospitality

Remote work

Relaxing

Lots to do



Bed type

Futon on floor/Twin bed

Meal request

✓ Vegetarian ✓ Vegan
✓ Halal ✓ Gluten-free

English Menu Available.

Payment(E-money)

☐ Apple ☐ Google
☐ Alipay ☐ WeChat



MAP



Web

Tanabe

Wakayama Prefecture



Akizuno Garten

An atmospheric wooden schoolhouse

The wooden former elementary schoolhouse is the symbol of Akizuno Garten.

There are many activities that showcase the attractiveness of Kamiakizu, Tanabe, Wakayama: A "Sweets Workshop" where you can experience making sweets with local tangerines, and a "Farmer's Restaurant" where cuisine that use local vegetables is served, interactions with local farmers while enjoying activities such as tangerine picking and agricultural experiences, etc. The corridors and classrooms of the former school have been kept just as they were, and they are popular spots for photos.



The former schoolhouse was built in 1953



1 A focus on local produce.

2 Farm experience.

3 Making jam with local fruit.

DATA

4558-8 Kamiakizu, Tanabe-City, Wakayama ZIP:646-0001

IN 15:00 OUT 10:00

Facility Former schoolhouse

Rate 1 night, no meals, 2 persons: from 5,200 yen per person.

Access Car: 10 min. from Nanki-Tanabe interchange.

Train: 15 min. by car from Kii-Tanabe Sta.

Parking 48 spaces. No shuttle service.

Meals Breakfast and dinner can be reserved (additional fee).

Web <https://agarten.jp/garteninfo/eindex.html>

In the room	Wi-Fi	Kitchen	Bath
	Shower	Air-conditioning	TV
	Fridge	Microwave	Washing machine
	Hair dryer		
Other	Hand towel	Bath towel	Toothbrush
	Soap/shower gel	Shampoo/conditioner	Yukata (loungewear)
	Laundry detergent	Cutlery and plates	Seasonings
Payment	Digital (some forms)	Credit card	Cash

A word of welcome



Akizuno Garden is located in Yoshino-Kumano National Park, surrounded by Mt. Ryuzen, Mt. Takao, and Kizetsukyo Gorge with its gigantic stones, where you can enjoy activities such as casual low-mountain hikes. Please visit the Akizuno Garten website for details.

Local support organization: Agricultural Corporation Akizuno Co., Ltd.

Extra hospitality

Remote work

Relaxing

Lots to do



Taiji

HAKUGEI

From your hotel room, you can look out at fishing boats, fishing fires, and the Pacific Ocean. This hotel is in Taiji, at the southern tip of the Kii Peninsula. Fresh seafood dishes are served after you've relaxed in the natural hot springs.



Bed type

Futon on floor/Twin bed

Meal request

☐ Vegetarian ☐ Vegan
☐ Halal ☐ Gluten-free

No English Menu.

Payment(E-money)

☐ Apple ☐ Google
☐ Alipay ☐ WeChat

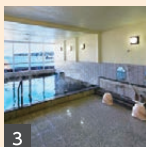
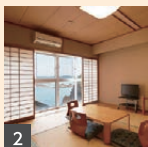


MAP



Web

- 1 Whale meat is served.
- 2 The rooms offer views of the ocean.
- 3 Relax in the large bath.



DATA

2973-4 Taiji, Taiji-cho,
Higashimuro-gun, Wakayama
649-5171

IN 15:00 OUT 10:00

Facility Hotel

Rate 1 night, 2 meals: from 9,900 yen.

Access

Car: 75 min. from Susamiminami interchange.
Train: 10 min. by car from Taiji Sta.

Parking

30 spaces. Shuttle service from
Taiji Sta. Max. 9 persons.

Meals

Breakfast and dinner included.

Web

<http://www.hakugei-taiji.com>

	Wi-Fi	Kitchen	Bath
In the room	Shower	Air-conditioning	TV
	Fridge	Microwave	Washing machine
	Hair dryer		
Other	Hand towel	Bath towel	Toothbrush
	Soap/shower gel	Shampoo/conditioner	Yukata (loungewear)
	Laundry detergent	Cutlery and plates	Seasonings
Payment	Digital (some forms)	Credit card	Cash



Taiji

Taiji Field Kayak

☐ **Kayak** (regular course)

☐ **Stand-Up Paddleboard** (SUP course)

Ride a kayak or paddleboard alongside dolphins and whales that have been released into the bay. An instructor is on hand as you watch the sea creatures. You can also paddle around the dolphin pens. Note: paddleboarding is only available for ages 10 and above.



MAP



Web

Reservations required

685-27 Moriura, Taiji-cho, Higashimuro-gun, Wakayama 649-5172

Available All year.

Capacity Kayak: 2 to 100 persons. Paddleboard: 2 to 15 persons.

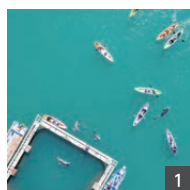
Duration Kayak: 2 hours. Paddleboard: 1 hour.

Rate Adults (kayak): 5,000 yen each. Children (kayak): 3,000 yen each.
Paddleboard: 3,000 yen each.

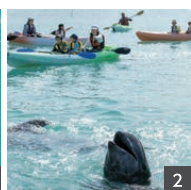
Access Car: 90 min. from Susamiminami/Owasekita interchange.
Train: 2 min. by car from Taiji Sta.

Web <http://www.taijifk.com/>

Payment Cash only.



1



2



3

- 1 Spend two hours exploring the bay on the regular course.
- 2 Say hello to the dolphins in the pens.
- 3 An instructor is always present.



Extra hospitality



Remote work



Relaxing



Lots to do

SHIGA

滋賀

KYOTO

京都

OSAKA

大阪

HYOGO

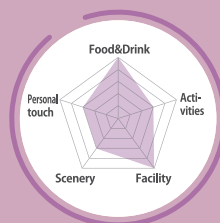
兵庫

NARA

奈良

WAKAYAMA

和歌山

**Bed type**

Futon on floor/Twin/Double bed

Meal request

- ☐ Vegetarian ☐ Vegan
☐ Halal ☐ Gluten-free

[English Menu Available.](#)**Payment(E-money)**

- ☒ Apple ☒ Google
☐ Alipay ☒ WeChat



MAP



Web

Kushimoto

Wakayama Prefecture



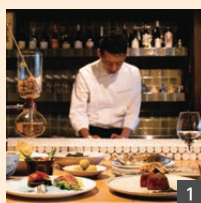
NIPPONIA HOTEL KUSHIMOTO KUMANOKAIDO

A historic building at the southern tip of Honshu

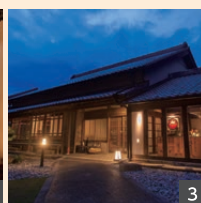
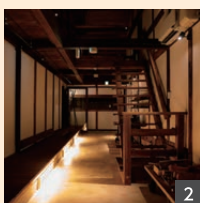
The town of Kushimoto is situated at the southernmost tip of Honshu, the largest of Japan's four main islands. The building in which you stay was constructed in 1874 and is a Registered Tangible Cultural Property. As you can rent the entire place, you can stay with your whole family or a group of friends. The hotel is pet-friendly.



An atmospheric wooden interior



- 1 The Italian restaurant uses local ingredients.
- 2 Lighting enhances the visual appeal.
- 3 Exterior.

**DATA**

🏠 996-1 Kushimoto, Kushimoto-cho, Higashimuro-gun, Wakayama 649-3503

IN 15:00 **OUT** 11:00

Facility Rent entire place

Rate 1 night, no meals: from 32,000 yen for entire house.

Access Car: 30 min. from Susamiminami interchange.

Train: 10 min. on foot from Kushimoto Sta.

Parking 12 spaces. No shuttle service.

Meals Breakfast and dinner can be reserved (additional fee).

Web <https://nipponia-kushimoto.jp>

In the room	Wi-Fi	Kitchen	Bath
	Shower	Air-conditioning	TV
	Fridge	Microwave	Washing machine
	Hair dryer		
Other	Hand towel	Bath towel	Toothbrush
	Soap/shower gel	Shampoo/conditioner	Yukata (loungewear)
	Laundry detergent	Cutlery and plates	Seasonings
Payment	Digital (some forms)	Credit card	Cash

A word of welcome




For inquiries about the various experience menus, please contact the Nanki-Kushimoto Tourist Association at 0735-62-3171.

Yura

Oobiki Fishing Port
Shirasaki Cruises

A cruise along the Shirasaki coast, with its white limestone cliffs. The boats are captained by local fishermen with a detailed knowledge of the area. This enables them to approach the rocks safely to give you a better view.

Reservations required

 Obiki Fishing Port, Yura-cho, Hidaka-gun, Wakayama 649-1123

Available	Year-round.
Capacity	Max. 12 persons per boat. Max. 72 persons on 6 boats.
Duration	30 min. and 60 min. cruises available.
Rate	Refer to the website.
Access	Car: 25min. from both Hirokawa interchange and Kawabe interchange. Train: 10min. by taxi from Kii-Yura Sta.
Web	https://kishunowa.or.jp/cruise/
Payment	Cash only.



MAP



Web

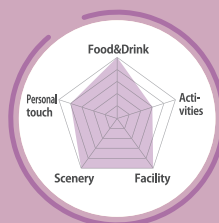
An immersive cruising experience.



A word of welcome



Please refer to the Yura Town Tourism Guide for information about accommodations.



Bed type
Futon on floor

Meal request

- ☒ Vegetarian ☐ Vegan
☐ Halal ☐ Gluten-free

No English Menu.

Payment(E-money)

- ☐ Apple ☐ Google
☐ Alipay ☐ WeChat



MAP



Web

Aridagawa

Wakayama Prefecture



Kasamatsu-tei

A view of terraced rice fields

A traditional house dating back to the Meiji era. Situated at the foot of the mountain that is home to sacred Koyasan, and close to Aragijima with its striking terraced rice fields, designated as an important cultural landscape. You also have access to other buildings on the property including a storehouse.



Meals can be reserved

DATA

144 Shimizu, Aridagawa-cho, Arida-gun, Wakayama 643-0521

IN 15 : 00 **OUT** 11 : 00

Facility Rent entire place

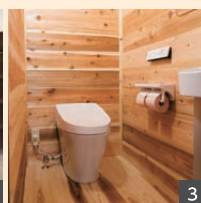
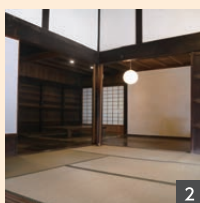
Rate 1 night, no meals: from 36,000 yen for entire house. Max. 8 persons.

Access Car: 40 min. from Arida interchange.
Train: 40 min. by car from Fujinami Sta.

Parking 4 spaces. No shuttle service.

Meals Dinner can be reserved (additional fee).

Web <http://ag-w.org/kasamatsu>



1 The terraced rice fields of Aragijima.

2 Traditional Japanese interior.

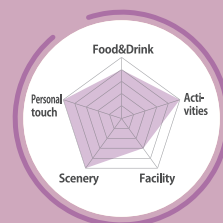
3 A modern shower-toilet.

A word of welcome



Please refer to our website for more photos and information.

Local support organization: Aridagawa Town Green Tourism Promotion Council



Bed type
Futon on floor/Single bed

Meal request

☒ Vegetarian ☒ Vegan
☐ Halal ☐ Gluten-free

No English Menu.

Payment(E-money)

☐ Apple ☐ Google
☐ Alipay ☐ WeChat



MAP



Web

Nachikatsuura
Wakayama Prefecture



JUGEMU

Self-sufficiency and donkeys

Here you can sample a self-sufficient lifestyle. The host family grows organic, pesticide-free vegetables and uses donkey dung for compost. They cut firewood and dry it for two years to heat the bathwater. Visitors take part in farming, heating the bathwater, cooking rice in a traditional oven, and cleaning up after meals.



Highlights include the stone walls

DATA

📍 1246 Ono, Nachikatsuura-cho, Higashimuro-gun, Wakayama 649-5461

IN 14:00 **OUT** 10:00

Facility Farmhouse B&B
Rate 1 night, 2 meals: from 8,000 yen.
Access Car: 90 min. from Susamiminami interchange. Train: 60 min. by bus from Kii-Katsuura Sta.
Parking 3 spaces. No shuttle service.
Meals Breakfast and dinner included.
Web <https://english.irokawamura.com/>



- 1 Look after a donkey.
- 2 Cook the traditional way.
- 3 Split firewood.

In the room	Wi-Fi	Kitchen	Bath
	Shower	Air-conditioning	TV
	Fridge	Microwave	Washing machine
Other	Hair dryer	Bath towel	Toothbrush
	Hand towel	Shampoo/conditioner	Yukata (loungewear)
	Soap/shower gel	Cutlery and plates	Seasonings
Payment	Digital (some forms)	Credit card	Cash



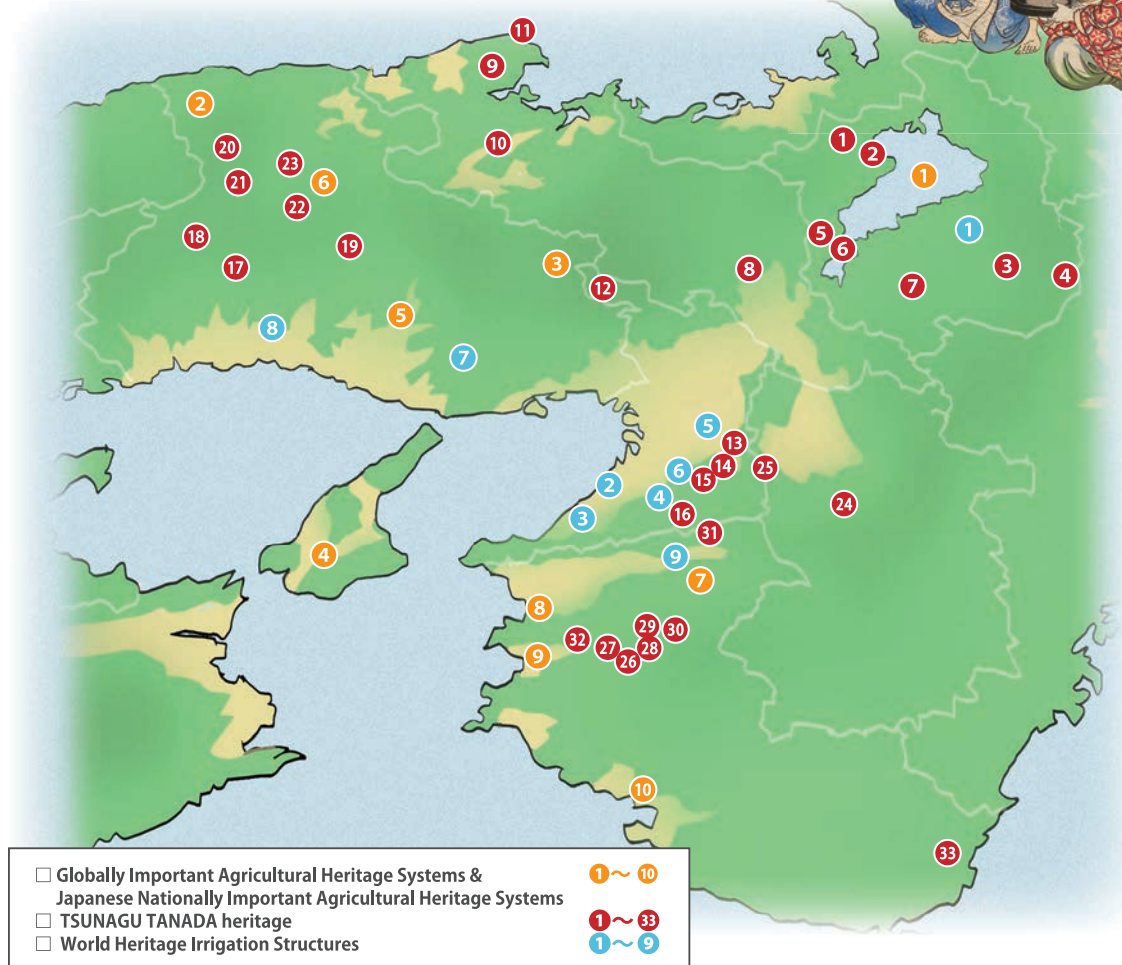
A word of welcome

Here you have access to the clear streams of the Ota River and various local activities ranging from saunas and hiking to picking berries. Accommodation options include homestays, campgrounds, and an ancient inn. Nearby is Nachi Falls, a Whale Museum, and the Katsuura fish market.

Local support organization: The Promotion Council of Agritourism Around Ota River

MAP

There are many wonderful places like this in the countryside. Please try visiting them!



Globally Important Agricultural Heritage Systems & Japanese Nationally Important Agricultural Heritage Systems

Kinki Area List

Globally Important Agricultural Heritage Systems (GIAHS) are outstanding landscapes of aesthetic beauty that combine agricultural biodiversity, resilient ecosystems and a valuable cultural heritage, which FAO designate GIAHS. Located in specific sites around the world, they sustainably provide multiple goods and services, food and livelihood security for millions of small-scale farmers.

Japanese Nationally Important Agricultural Heritage Systems (JNIAHS) are areas or systems in Japan designated by the Minister of Agriculture, Forestry and Fisheries that are important and traditionally engaged in agriculture, forestry or fisheries based on Japanese designation criteria. Japan has traditional agriculture, forestry and fisheries regions that it should take pride in and pass down to future generations. JNIAHS was created in 2016 because some are difficult to evaluate using the designation criteria set by the FAO.

	AREA	SYSTEM	Certification
1	Lake Biwa region in Shiga Pref.	Biwa Lake to Land Integrated System	2018 [JAPAN] 2022 [GLOBAL]
2	Mikata region in Hyogo Pref.	Integrated Farming System for Harmonizing People and Cattle in the Mikata District	2018 [JAPAN] 2023 [GLOBAL]
3	Tamba-Sasayama region in Hyogo Pref.	Tamba-Sasayama Black Soybean Cultivation System for Fine Seeds and Family Farming	2020 [JAPAN]
4	Minami-Awaji region in Hyogo Pref.	Minami-Awaji Rice Paddy, Onion, and Livestock Rotation System	2020 [JAPAN]
5	North Harima and Northern Rokko region in Hyogo Pref.	Production system for Yamada-Nishiki, Hyogo's sake rice	2024 [JAPAN]
6	Asago region in Hyogo Pref.	Resource-recycling agricultural system with Iwatsu leeks =Inheritance of traditional seeds and Satoyama landscape prevention through regional cooperation=	2024 [JAPAN]
7	Koya, Hanazono, and Shimizu regions in Wakayama Pref.	Sustainable Agroforestry System Connecting Mount Koya and Arida River	2020 [JAPAN]
8	Shimotsu region in Wakayama Pref.	Mikan Warehouse System	2018 [JAPAN]
9	Arida region in Wakayama Pref.	Arida Mikan System that Laid the Foundation for Mikan Cultivation	2020 [JAPAN]
10	Minabe-Tanabe region in Wakayama Pref.	Minabe-Tanabe Ume System	2015 [GLOBAL]



TSUNAGU TANADA heritage – passing hometown pride to the future.

Kinki Area List

Terraced rice fields have a long and storied history in Japan. Traditionally they have played a key role in providing food in farming communities where flat land is scarce. By cultivating these beautiful fields, people also pass down customs and techniques.

The government initiated the Tsunagu Tanada Heritage project in 2021 to protect and revitalize terraced rice fields. The program promotes greater understanding and cooperation to support the conservation of these fields.

	AREA	NAME	LOCATION
1	Takashima City, Shiga Pref.	HATA NO TANADA	Hata, Takashima-shi, Shiga Pref.
2	Takashima City, Shiga Pref.	UKAWA NO TANADA	Ukawa, Takashima City, Shiga Pref.
3	Kouka City, Shiga Pref.	IMAGOU TANADA	Imago, Mizuguchi-cho, Koka-shi, Shiga Pref.
4	Kouka City, Shiga Pref.	AKEBIHARA NO TANADA	Yamamehara, Tsuchiyama-cho, Koka-shi, Shiga Pref.
5	Ootsu City, Shiga Pref.	KAMIOOGI TANADA	1, Ohgi, Otsu-shi, Shiga Pref.
6	Ootsu City, Shiga Pref.	OOGI HIRAO NO TANADA	Ohgi-cho, Otsu City, Shiga Pref.
7	Rittou City, Shiga Pref.	HASHIRI TANADA	Arahari, Ritto City, Shiga Pref.
8	Kyoto City, Kyoto Pref.	TOUIN-KOSHIHATA-SHIKIMIGAHARA NO TANADA	Saga Koshibata, Shikimigahara, Ukyo-ku, Kyoto Pref.
9	Miyazu City, Kyoto Pref.	KAMISEYA - MATSUE NO TANADA	Aza-Kamiseya, Matsuo, Miyazu City, Kyoto Pref.
10	Fukuchiyama City, Kyoto Pref.	KEHARA NO TANADA	Kehara, Oe-cho, Fukuchiyama City, Kyoto Pref.
11	Kyotango City, Kyoto Pref.	SODESHI NO TANADA	Sodeshi, Tango Town, Kyotango City, Kyoto Pref.
12	Nose, Osaka Pref.	NAGATANI NO TANADA	Hase, Nose-cho, Toyono-gun, Osaka Pref.
13	Kanan, Osaka Pref.	MOCHIO NO TANADA	361 Mochio, Konan-cho, Minamikawachi-gun, Osaka Pref.
14	Kanan, Osaka Pref.	HIRAISHI NO TANADA	2002 Oaza Hiraishi, Konan-cho, Minamikawauchi-gun, Osaka Pref.
15	Chihayaakasaka, Osaka Pref.	SHIMOAKASAKA NO TANADA	25, Oaza Higashisaka, Chihaya Akasaka-mura, Osaka Pref.
16	Kawachinagano City, Osaka Pref.	SOSHIRO NO TANADA	Shimizu, Kawachinagano City, Osaka Pref.
17	Shisou City, Hyogo Pref.	YAMADA NO TANADA	Higashikawachi Yamada, Ichinomiya-cho, Shiso City, Hyogo Pref.
18	Shisou City, Hyogo Pref.	IIMI NO TANADA	Iimi, Haga-cho, Shiso City, Hyogo Pref.
19	Taka, Hyogo Pref.	ISARIGAMI NO TANADA	Isarigami, Kami-ku, Taka-cho, Taka-gun, Hyogo Pref.
20	Kami, Hyogo Pref.	UEYAMA NO TANADA	Nukida, Ojira-ku, Kami-machi, Mikata-gun, Hyogo Pref.
21	Yabu City, Hyogo Pref.	BEKKUU NO TANADA	Betsumiya, Yabu City, Hyogo Pref.
22	Yabu City, Hyogo Pref.	NOUZA NO TANADA	Noza, Yabu City, Hyogo Pref.
23	Yabu City, Hyogo Pref.	MIYAGAKI NO TANADA	Miyagaki, Oya-cho, Yabu City, Hyogo Pref.
24	Asuka, Nara Pref.	INABUCHI TANADA	Inabuchi, Asuka Village, Takaichi County, Nara Pref.
25	Oshimi - Shinjo, Nara Pref.	KATSURAGIHIKISANROKU NO TANADA	Teraguchi, Fujii, Hiraoka, Yamaguchi, Fufuki, Umemuro, Yamada, Katsuragi, Nara Pref.
26	Aridagawa, Wakayama Pref.	UWAYU - ARAGIJIMA	Shimizu, Aridagawa-cho, Arida-gun, Wakayama Pref.
27	Aridagawa, Wakayama Pref.	NUMA NO TANADA - DANDANBATAKE	Numa, Aridagawa-cho, Arida-gun, Wakayama Pref.
28	Aridagawa, Wakayama Pref.	KUNOHARA NO TANADA	Kunohara, Aridagawa-cho, Arida-gun, Wakayama Pref.
29	Aridagawa, Wakayama Pref.	NUMADANI "TENKU NO TANADA"	Numatani, Aridagawa-cho, Aridagawa-gun, Wakayama Pref.
30	Aridagawa, Wakayama Pref.	SUGINOHARA NO TANADA	Suginohara, Aridagawa-cho, Arida-gun, Wakayama Pref.
31	Hashimoto City, Wakayama Pref.	IMODANI NO TANADA	Hashiramoto, Hashimoto City, Wakayama Pref.
32	Kimino, Wakayama Pref.	NAKATA NO TANADA	Nakada, Kimino-cho, Kaigusa-gun, Wakayama Pref.
33	Nachikatsuura, Wakayama Pref.	IROKAWA NO TANADA	Irokawa, Nachikatsuura-cho, Higashimuro-gun, Wakayama Pref.



World Heritage Irrigation Structures

Kinki Area List

World Heritage Irrigation Structures are historical irrigation structures designated and registered by the International Commission on Irrigation and Drainage (ICID*) to clarify the history and development of irrigation, promote understanding, and contribute to the appropriate preservation of irrigation structures.

*ICID: a non-profit, non-governmental organization concerned with irrigation and drainage with 78 participating countries and regions.

	NAME	LOCATION
1	Tatsugaike Irrigation pumping station	Toyosato-cho, Shiga Pref.
2	Kumedaikie Reservoir	Kishiwada City, Osaka Pref.
3	Yukawa Irrigation Canal	Izumisano City, Osaka Pref.
4	Teragaike Pond and Teragaike Waterway	Kawachinagano City, Osaka Pref.
5	Tsukidome Irrigation Canal	In and around Kashiwara City, Osaka Pref.
6	Sayamaikie Reservoir	Osaka-Sayama City, Osaka Pref.
7	Tanzansosui Irrigation System	In and around Kobe City, Hyogo Pref.
8	Saikojinososui Irrigation System	In and around Saikoji, Hyogo Pref.
9	Odai Irrigation Canal	In and around Hashimoto City, Wakayama Pref.

**We're
on
our way!**



**Off to
Kinki?**

KINKI
COUNTRYSIDE STAY GUIDE BOOK