



The export inspection may be needed depending on the items and destination countries.
Please check the backpage.
Standard procedures of export inspection are below.

Check the phytosanitary requirements of your destination country (contact the Plant Protection Station in advance)

Application for export inspection

Export inspection

(If passed)
Issuance of the Phytosanitary Certificate

Check in for a flight

Customs clearance

Passport control

Boarding

Application Form of Export Inspection for Plant and Plant Products



The service is offered at the airport counters and the Plant Protection Station.

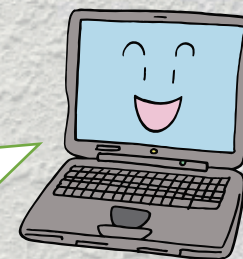


Japanese fruits in season

	JAN	FEB	MAR	APR	MAY	JUN	JUL	AUG	SEP	OCT	NOV	DEC
Satsuma mandarin												
Apple												
Persimmon												
Japanese pear												
Grape												
Peach												
Strawberry												
Melon												

◆ Taking Plant and Plant Products out of Japan ◆
Every country has specific requirements including prohibitions on imports, restrictions, and sterilization treatments for importation of plant and plant products.
For further details, please contact the website below.

Ministry of Agriculture, Forestry and Fisheries of Japan
Plant Protection Station
<http://www.maff.go.jp/pps/>



Contact Us

Yokohama Plant Protection Station

Shin-Chitose Airport Branch Tel. 0123-24-6154
Narita Sub-Station PTB1 Tel. 0476-32-6694
PTB2 & PTB3 ... Tel. 0476-34-2352
Haneda Airport Sub-Station Tel. 03-5757-9790

Nagoya Plant Protection Station

Chubu Airport Sub-Station Tel. 0569-38-8433

Kobe Plant Protection Station

Kansai Airport Sub-Station Tel. 072-455-1936

Moji Plant Protection Station

Fukuoka Airport Branch Tel. 092-477-7575

Naha Plant Protection Station

Naha Airport Branch Tel. 098-857-0054

Please find out more on our website.

Export Quarantine Counter

■ New Chitose Airport
International Passenger Terminal Bldg. 3F
CIQ Exhibition Room

■ Narita Airport
Passenger Terminal 1 (4th Floor)
North Wing
Passenger Terminal 2 (3rd Floor)
North Group Counter No.32

■ Haneda Airport
Passenger Terminal (3rd Floor),
near the Airline Check-in
Counter L

■ Kansai Airport
Passenger Terminal Bld.
(4th Floor North Side), near the North Departures Gate

■ Fukuoka Airport
Passenger Terminal (3rd Floor Southside), near the Airline
Check-in Counter M

英語版



For travellers taking agricultural products out of Japan

Ministry of Agriculture, Forestry and Fisheries of Japan
Plant Protection Station



MAFF



"Oishii" to the world.
Washoku

Japan.
Washoku

What items you can take out of Japan

Current as of August 2016

Importing countries/ regions	Free from export inspection	You can take the items out of Japan if you passed export inspection
Republic of Korea 	Grape, Kiwifruit, Pineapple, Chestnut, Strawberry, Wasabi, Polished rice, Green tea leaf	Yam* (* The items produced in the specific production areas only. Please ask the Plant Protection Station for details.)
Hong Kong  Singapore  United Arab Emirates 	Satsuma mandarin, Apple, Japanese pear, Persimmon, Cherry, Grape, Peach, Kiwifruit, Loquat, Pineapple (only for UAE), Mango, Chestnut, Strawberry, Water melon, Melon, Edamame, Wasabi, Yam, Sweet potato (only for Singapore and UAE) , Polished rice, Green tea leaf	Pineapple (only for Singapore)
Malaysia 	Apple, Japanese pear, Persimmon, Cherry, Grape, Peach, Kiwifruit, Loquat, Pineapple, Mango, Chestnut, Strawberry, Water melon, Melon, Edamame, Wasabi, Yam, Sweet potato, Polished rice, Green tea leaf	
Thailand 		Apple, Japanese pear, Persimmon, Cherry, Grape, Peach, Kiwifruit, Chestnut, Strawberry, Water melon, Melon, Edamame, Wasabi, Yam, Sweet potato, Polished rice, Green tea leaf
Indonesia 		Apple, Japanese pear, Persimmon, Cherry, Grape, Peach, Kiwifruit, Loquat, Pineapple, Mango, Chestnut, Strawberry, Water melon, Melon, Edamame, Wasabi, Yam, Sweet potato, Polished rice, Green tea leaf
European Union 	Grape (excluding Cyprus), Kiwifruit, Loquat, Pineapple, Chestnut, Strawberry, Water melon, Melon, Edamame, Wasabi, Yam, Sweet potato, Polished rice, Green tea leaf	Apple, Japanese pear, Persimmon, Cherry, Peach, Mango
Switzerland 	Grape, Kiwifruit, Loquat, Pineapple, Chestnut, Strawberry, Water melon, Melon, Edamame, Wasabi, Yam, Sweet potato, Polished rice, Green tea leaf	Apple, Japanese pear, Persimmon, Mango
Russian Federation 	Green tea leaf	Satsuma mandarin, Apple, Japanese pear, Persimmon, Cherry, Grape, Peach, Kiwifruit, Loquat, Pineapple, Mango, Chestnut, Strawberry, Water melon, Melon, Edamame, Wasabi, Yam, Sweet potato, Polished rice
United States of America  Australia  New Zealand 	Polished rice, Green tea leaf	
Canada 	Satsuma mandarin, Persimmon, Kiwifruit, Loquat, Pineapple, Mango, Water melon, Melon, Edamame, Wasabi, Sweet potato, Polished rice, Green tea leaf	

The requirements above are generally subject to specific part of each plant for human consumption (e.g. fruit, stem or tuber). Please note that the requirements may be changed without notice and it may be subject to another requirements when these items are carried as cargo or by mail.

The requirements are different depending on the item and destination country. If you have any questions, feel free to ask the Plant Protection Station !

