

February 2023 version

# **Stricter Rules for Phytosanitary Certificate Attachment**

Plant Protection Station

No unauthorized reproduction

# Overview of the Partially Revised Ordinance for Enforcement of Plant Protection Act (Announced in the Official Gazette on August 5, 2020)

## Review of plant species exempted from phytosanitary certificate attachment

### < Overview >

○ Article 6 [Restrictions on Imports] of the Plant Protection Act (Enforced on April 1, 2023) (Provisional Translation)

Imported plants (excluding plants that are not used for cultivation and provided for in Order of the Ministry of Agriculture, Forestry and Fisheries as those for which there is little possibility that quarantine pests are stuck to: hereinafter the same applies in this paragraph and the following paragraph) or designated articles (limited to those specified by Order of the Ministry of Agriculture, Forestry and Fisheries as those for which may not be free from that quarantine pests: hereinafter referred to as "quarantine designated articles" in this chapter) and their containers or packages must not be imported, except for those to which a phytosanitary certificate, or its copy, issued by the governmental organization of the exporting country is attached, which states that it is confirmed or believed that export plant items are free from harmful plants or animals subject to quarantine as a result of the inspection by the relevant organization.

⇒ **If no phytosanitary certificate is attached, the plants or articles shall be disposed or returned.**

○ Before August 4 2020 , nine items, such as dried turmeric and dried almond seeds, were stipulated as plants that **are not necessary** to be accompanied by a phytosanitary certificate in the Article 5-3\* of the Ordinance for Enforcement of the Plant Protection Act (Order no. 73 of the Ministry of Agriculture and Forestry, June 30, 1950).

○ This time, a risk assessment was conducted again based on the latest information and scientific evidence **to review plants that are least liable to be infested with quarantine pests. Based on this, the Ordinance for Enforcement of the Plant Protection Act (Article 5-3\*) was amended.**

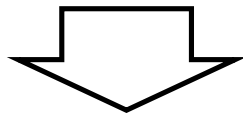
\* (Revised to Article 4 from April 1, 2023)

For plants and plant products, such as grains, that are imported by cargo, a three-year period until August 4, 2023 has been set as the transition period for exporting countries to establish a system for issuing phytosanitary certificates.

# What is “a plant least liable to be infested with quarantine pests?”

## Criteria for ascertaining plants based on risk assessment

- Plants that **have undergone certain processing steps**
- Plants **not assumed to be used on farmland or in the vicinities thereof**
- Plants with **pest detection rates of 1.0% or less** in import inspections for the past 5 years
- Plants **least liable to be contaminated with soil or import-prohibited plants**
- Plants that **are not host plants of the pests** designated in the Annexed Table 1-2, 2 and 2-2 of the Ordinance for Enforcement of the Plant Protection Act



**These items are determined to be least liable to be infested with quarantine pests.**

## In other words.....

- Processed items (dried, compressed, etc.)
- Not for use in cultivation or as fertilizer, animal feeds, or other production materials for agriculture and forestry
- Least liable to be infested with quarantine pests (differences between plant parts, etc.)
- Least liable to be contaminated with soil or import-prohibited plants (excluding plants that are likely to be contaminated)
- No contamination by high-risk quarantine pests

# Article 5-3 of the Ordinance for Enforcement of the Plant Protection Act

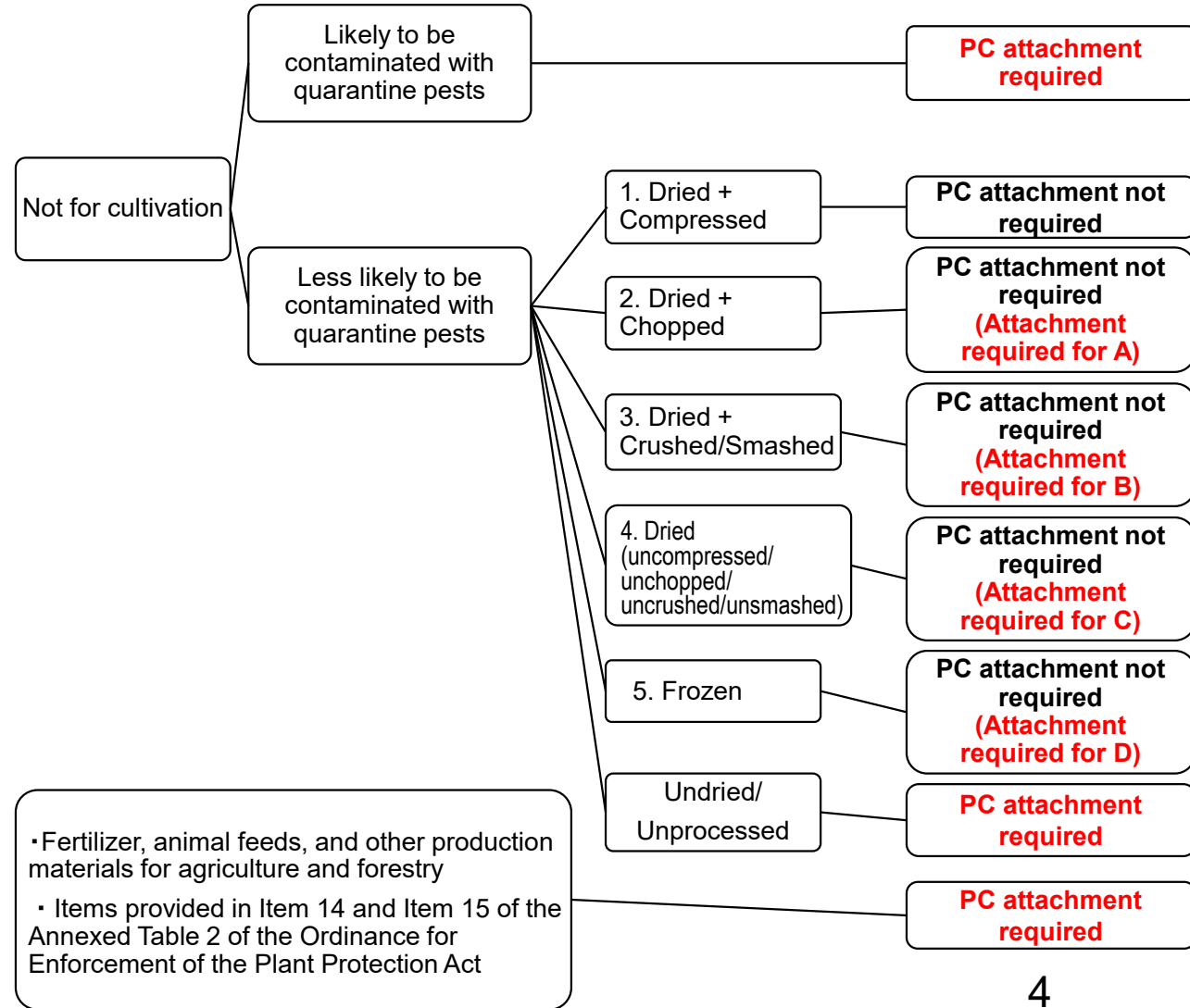
(Revised to Article 4 from April 1, 2023)

Plants not used for cultivation under Article 6, Paragraph 1 of the Plant Protection Act and designated by the Order of the Ministry of Agriculture, Forestry and Fisheries as least liable to be infested with quarantine pests are as follows. However, this shall not apply to plants that are intended for use as fertilizers, animal feeds and other production materials for agriculture and forestry or plants that are provided in Item 14 and Item 15 of the Annexed Table 2 of the Ordinance of the Ministry of Agriculture, Forestry and Fisheries.

- 1 Dried and compressed plants
- 2 Dried and chopped plants (excluding Alexandrian senna stems, common orange fruits and peels and cassava roots) .....A
- 3 Dried and crushed or smashed plants (excluding common oranges, tamarind fruits and cassava roots) .....B
- 4 Dried plants that are not compressed, chopped, crushed or smashed. However, in addition to woods and plant parts designated below for each of the following plants are excluded from the dried plants.....C (see page 7)
- 5 Frozen plants (excluding walnut(nut in shell)) .....D

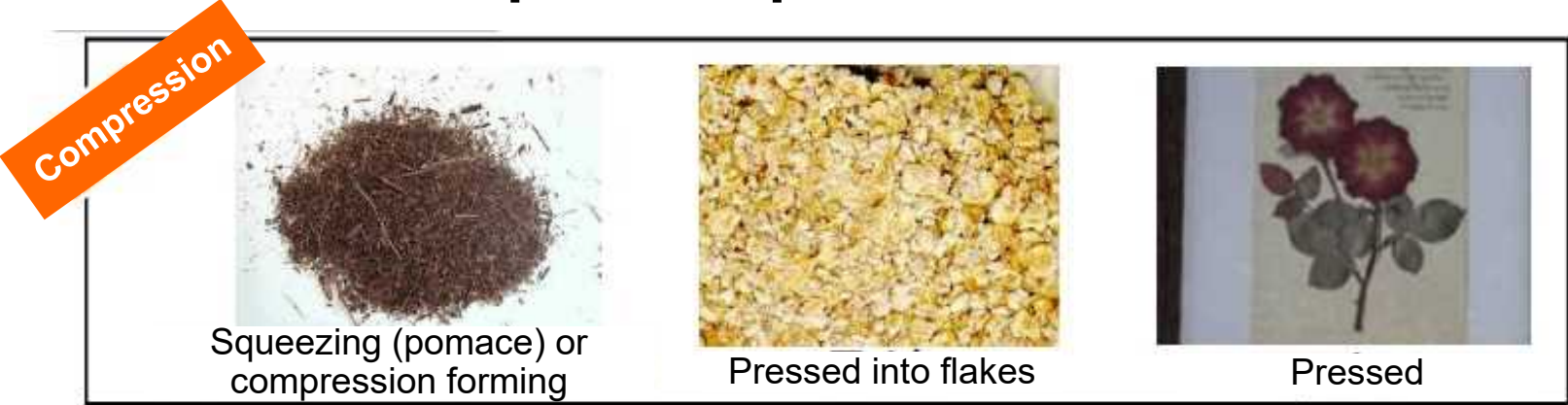
**Image**

※PC : Phytosanitary Certificate



# Article 5-3 of the Ordinance for Enforcement of the Plant Protection Act (Revised to Article 4 from April 1, 2023)

## 1 Dried and compressed plants



## 2 Dried and chopped plants (excluding Alexandrian senna stems, common orange fruits and peels and cassava roots)



**3 Dried and crushed or smashed plants (excluding common orange and tamarind fruits and cassava roots)**



**4 Dried plants that are not compressed, chopped, crushed or smashed. However, in addition to woods, plant parts of the described below are excluded from the dried plants**



(Next page)

**5 Frozen plants (excluding walnut(nut in shell))**

## Article 5-3, Item 4 of the Ordinance for Enforcement of the Plant Protection Act (Revised to Article 4 from April 1, 2023)

In addition to **woods**, plant parts of the described below are excluded from the dried plants.

- (1) Stone pine (*Pinus pinea*): **Leaf, branch and bark**
- (2) Apple box (*Eucalyptus stuartiana*): **Leaf, branch, flower and fruit**
- (3) Manna gum (*Eucalyptus viminalis*): **Leaf, branch, flower and fruit**
- (4) Korean Perilla (*Perilla ocimoides*): **Seed**
- (5) Cacao (*Theobroma cacao*): **Seed**
- (6) Japanese chestnut (*Castanea crenata*): **Chestnut (excluding peeled chestnut)**
- (7) Bubinga (*Guibourtia pellegriniana*): **Bark**
- (8) Walnut (*Juglans*): **Walnut (nut in shell)**
- (9) Coriander (*Coriandrum sativum*): **Leaf and seed**
- (10) Peruvian pepper (*Schinus molle*): **Leaf, branch, flower and fruit**
- (11) Sesame (*Sesamum indicum*): **Seed**
- (12) Pomegranate (*Punica granatum*): **Fruit**
- (13) Sugar pine (*Pinus lambertiana*): **Leaf, branch and bark**
- (14) Japanese cedar (*Cryptomeria japonica*): **Fruit**
- (15) Rape (*Brassica napus* ssp. *Oleifera*): **Seed**
- (16) Alexandrian senna (*Cassia acutifolia*): **Leaf**
- (17) Tamarind (*Tamarindus indica*): **Fruit**
- (18) Chinese chestnut (*Castanea mollissima*): **Chestnut (excluding peeled chestnut)**
- (19) Barbados nut (*Jatropha curcas*): **Seed**
- (20) Black cumin (*Nigella sativa*): **Seed**
- (21) Coco grass (*Cyperus rotundus*): **Leaf and stem**
- (22) Maritime pine (*Pinus maritima*): **Leaf, branch and bark**
- (23) Caraway (*Carum carvi*): **Seed**
- (24) Brazil nut tree (*Bertholletia excelsa*): **Nut (excluding peeled nut)**
- (25) Safflower (*Carthamus tinctorius*): **Flower and seed**
- (26) Basil (*Ocimum basilicum*): **Leaf and seed**
- (27) Singapore almond (*Terminalia catappa*): **Leaf, branch and flower**
- (28) Common juniper (*Juniperus communis*): **Fruit**
- (29) Common beech (*Fagus sylvatica*): **Leaf, branch and flower**
- (30) Horse radish tree (*Moringa oleifera*): **Leaf and fruit**
- (31) Chenopodiaceae : **Seed**
- (32) Gramineae : **Seed** (excluding malt)
- (33) Polygonaceae : **Seed**
- (34) Amaranthaceae : **Seed**
- (35) Leguminosae : **Seed**

**PC attachment  
required**

Requirements for accompanying a phytosanitary certificate depend on the plant parts.

## Requests for August 5, 2023

- From August 5, 2023, we will strictly require accompanying phytosanitary certificates when the plants to be required them are imported by cargo.
- Please confirm whether it is necessary to be accompanied by a phytosanitary certificate for plants you plan to import by cargo. (Please feel free to contact the nearest Plant Protection Station if you have any questions.)
- If you import a plant requiring accompanying a phytosanitary certificate by cargo, please proceed necessary procedures promptly, such as confirming with related authorities of the exporting country through the exporter what procedures are required to obtain a phytosanitary certificate.
- If, as a result of the confirmation with the exporting country, it is found that the country does not issue a phytosanitary certificate for some plants, please provide that information to the Plant Protection Station and continue to request the authorities of the exporting country to issue a phytosanitary certificate through the exporter.



## **A Request from the Plant Protection Stations**

If you have any questions, please contact the appropriate Plant Protection Station below.

### **< Contact information for Plant Protection Stations >**

- **Yokohama Plant Protection Station 045-211-7152**
- **Nagoya Plant Protection Station 052-651-0112**
- **Kobe Plant Protection Station 078-331-2386**
- **Moji Plant Protection Station 093-321-2601**
- **Naha Plant Protection Office 098-868-2850**

## A Request from the Plant Protection Stations

If you have any questions, please contact the appropriate Plant Protection Station below. You can view relevant information from the following URL.

### < Contact information for Plant Protection Stations >

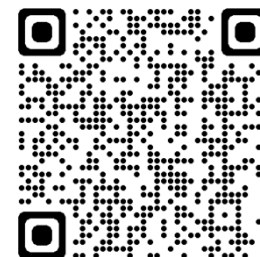
- Yokohama Plant Protection Station 045-211-7152
- Nagoya Plant Protection Station 052-651-0112
- Kobe Plant Protection Station 078-331-2386
- Moji Plant Protection Station 093-321-2601
- Naha Plant Protection Office 098-868-2850

### < Sources of related information >

#### About the review of plants exempted from the attachment of a phytosanitary certificate

<https://www.maff.go.jp/pps/j/introduction/import/ipcfuyou/index.html>

- Plants exempted from the attachment of a phytosanitary certificate
- Plants requiring the attachment of a phytosanitary certificate
- Revision of ministerial orders, etc. (including WTO/SPS notifications)



### ○ Plant Protection Station website (opinions/questions)

[https://www.contactus.maff.go.jp/j/pps/form/qa\\_e.html](https://www.contactus.maff.go.jp/j/pps/form/qa_e.html)